

COMPANY

Colette Lumiere

Notes on Baroque Living: Colette and Her Living Environment, 1972 - 1988

Curated by Kenta Murakami

November 20, 2021 - January 22, 2022



Colette Lumiere
Beautiful Dreamer Uniform (Experiment in Walking Architecture), 1980 - 1982
Ruched and treated fabric
80h x 22w x 25d in
203.20h x 55.88w x 63.50d cm
CL059



Colette Lumiere
Early Lightbox, 1972
Fabric, paint on canvas and light
19.25h x 14.25w x 9.75d in
48.90h x 36.20w x 24.77d cm
CL069



Colette Lumiere
Wall Fragment from the Living Environment, 1980
Fabric, photograph, light, and mixed media on wood
98h x 49w x 3.50d in
248.92h x 124.46w x 8.89d cm
CL050



Colette Lumiere
Wall Fragment from the Living Environment, 1980
Fabric, photograph, light, and mixed media on wood
97h x 49w x 3.50d in
246.38h x 124.46w x 8.89d cm
CL051

COMPANY



Colette Lumiere
Headless Woman, 1982
Mixed media
88h x 28w x 26d in
223.52h x 71.12w x 66.04d cm
CL110



Colette Lumiere
Colette In Her Living Environment, 1979
Filmed by Richard Polidori, color, and sound
TRT: 6 minutes, 14 seconds
CL144



Colette Lumiere
Beautiful Dreamer Uniform, 1980 - 1982
Ruched and treated fabric
63h x 55w x 17d in
160.02h x 139.70w x 43.18d cm
CL115



Colette Lumiere
Beautiful Dreamer Uniform Series II, 1980 - 1984
Mixed media on linen
58.50h x 39w in
148.59h x 99.06w cm
Framed: 62h x 43w x 2.25d in
157.48h x 109.22w x 5.72d cm
CL043



Colette Lumiere
Off the Wall (Fragment from the Living Environment), 1972 -1983
Fabric, light, and mixed media on wood
27.25h x 28w x 8.50d in
69.22h x 71.12w x 21.59d cm
CL046

COMPANY



Colette Lumiere
Off the Wall (Homage a Paul Delvaux), 1974
Fabric, photograph, light, and mixed media on wood
44h x 24w x 7d in
111.76h x 60.96w x 17.78d cm
CL045



Colette Lumiere
Off the Wall (The Last Stitch / Whitney Museum), 1978
Fabric, photograph, light, and mixed media on wood
70h x 19w x 7.50d in
177.80h x 48.26w x 19.05d cm
CL048



Colette Lumiere
Off the Wall (In Memory of Ophelia and All Those Who Died of Love and Madness / Akademie der Künste), 1976
Fabric, photograph, light, and mixed media on wood
26h x 26w x 8.50d in
66.04h x 66.04w x 21.59d cm
CL047



Colette Lumiere
Off the Wall (My Hat), 1978
Fabric, photograph, light, and mixed media on wood
30h x 22w x 3d in
76.20h x 55.88w x 7.62d cm
CL044



Colette Lumiere
Off the Wall (As Marat in David's Wraith / PS1 Contemporary Art Center), 1976
Fabric, photograph, light, and mixed media on wood
45.25h x 17.25w x 8d in
114.94h x 43.82w x 20.32d cm
CL049

COMPANY



Colette Lumiere

Notes on Baroque Living (Installation), 1978 - 1983, Reconstruction 2021

Reconstruction of Living Environment with original wall fragments, lamp, and perfume box; carpet, mirrors, shelves; Video by Anton Perich "Tearing Down My Living Environment" with Steve Reichard, 1976, 7:59 minutes, displayed on Colettesized CRT monitor; Selections from "Records from the Story of My Life", 1978; New "Living Colette sculpture" in collaboration with Cajsja von Zeipel, 2021, Mixed media

Installation

102h x 140w x 133d in

259.08h x 355.60w x 337.82d cm

Colette sculpture

70h x 48w x 39d in

177.80h x 121.92w x 99.06d cm

CL001



Colette Lumiere

Camille II / Museum of Modern Art (Postcards of The Story of My Life), 1976

Original photograph and ink on paper

10h x 7w in

25.40h x 17.78w cm

Framed: 14.75h x 11.75w x 1.25d in

37.47h x 29.85w x 3.18d cm

CL037



Colette Lumiere

Sleeping in Booth of Banco Gallery (Postcards of The Story of My Life), 1977

Original photograph and ink on paper

10h x 7w in

25.40h x 17.78w cm

Framed: 14.75h x 11.75w x 1.25d in

37.47h x 29.85w x 3.18d cm

CL035



Colette Lumiere

Ancorra tu, Cologne Art Fair (Postcards of the Story of My Life), 1977

Original photograph and ink on paper

7h x 10w in

17.78h x 25.40w cm

Framed: 11.75h x 14.75w x 1.25d in

29.85h x 37.47w x 3.18d cm

CL108

COMPANY



Colette Lumiere
Performance for Lecture / Institute of Architecture, New York (Postcards of The Story of My Life), 1977
Original photograph and ink on paper
10h x 7w in
25.40h x 17.78w cm
Framed: 14.75h x 11.75w x 1.25d in
37.47h x 29.85w x 3.18d cm
CL036



Colette Lumiere
Model for Sakowitz Window Display, 1979
Fabric, photographs, light, mirrors, and mixed media on wood
25h x 48.50w x 26.75d in
63.50h x 123.19w x 67.95d cm
CL004



Colette Lumiere
Off the Wall / French Consulate, New York (Postcards of The Story of My Life), 1975 - 1977
Original photograph and ink on paper
10h x 7w in
25.40h x 17.78w cm
Framed: 14.75h x 11.75w x 1.25d in
37.47h x 29.85w x 3.18d cm
CL033



Colette Lumiere
Real Dream / Clocktower Gallery (Postcards of The Story of My Life), 1975 - 1976
Original photograph and ink on paper
10h x 7w in
25.40h x 17.78w cm
Framed: 14.75h x 11.74w x 1.25d in
37.47h x 29.82w x 3.18d cm
CL038



Colette Lumiere
If It Takes Forever I will Wait for You / Idea Warehouse, New York (Postcards of the Story of My Life), 1974
Original photograph and ink on paper
10h x 7w in
25.40h x 17.78w cm
Framed: 14.75h x 11.75w x 1.25d in
37.47h x 29.85w x 3.18d cm
CL032

COMPANY



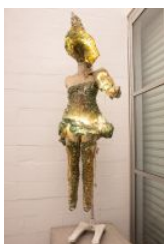
Colette Lumiere
There is No Place Like Home, For Art Tape / Florence, Italy (Postcards of the Story of My Life), 1974
Original photograph and ink on paper
10h x 7w in
25.40h x 17.78w cm
Framed: 14.75h x 11.75w x 1.25d in
37.47h x 29.85w x 3.18d cm
CL040



Colette Lumiere
Living Environment (Postcards of The Story of My Life), 1973 - 1977
Original photograph and ink on paper
10h x 7w in
25.40h x 17.78w cm
Framed: 14.75h x 11.75w x 1.25d in
37.47h x 29.85w x 3.18d cm
CL034



Colette Lumiere
Homage to Delacroix (Postcards of the Story of My Life), 1972 -1977
Original photograph and ink on paper
7h x 10w in
17.78h x 25.40w cm
Framed: 11.75h x 14.75w x 1.25d in
29.85h x 37.47w x 3.18d cm
CL109



Colette Lumiere
Winged Victory, 1992
Mixed media
85.75h x 24w x 21d in
217.81h x 60.96w x 53.34d cm
CL064

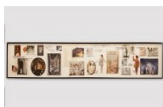


Colette Lumiere
'I'm a Work of Art' T-shirt Dress (Ripping Myself Off), 1978 -1979
Fabric and photograph on board
42h x 32w in
106.68h x 81.28w x 1.27d cm
Framed: 46h x 36w x 2d in
116.84h x 91.44w x 5.08d cm
CL062

COMPANY



Colette Lumiere
'I'm a Work of Art' T-shirt Dress (Ripping Myself Off), 1978 - 1979
Fabric and photograph on board
42h x 32w in
106.68h x 81.28w x 1.27d cm
Framed: 46h x 36w x 2d in
116.84h x 91.44w x 5.08d cm
CL063



Colette Lumiere
Activities and Products / Justine of the Colette is Dead Co.
Archival material
23h x 124w x 1.50d in
58.42h x 314.96w x 3.81d cm
CL100



Colette Lumiere
Justine and the Victorian Punks (Records of the Story of My Life), 1978
Mixed media on LP cover
12.50h x 12.50w in
31.75h x 31.75w cm
Framed: 15.75h x 16w x 1.50d in
40.01h x 40.64w x 3.81d cm
CL022



Colette Lumiere
Justine and the Victorian Punks (Records of the Story of My Life), 1978
Mixed media on LP cover
12.50h x 12.50w in
31.75h x 31.75w cm
Framed: 15.75h x 16w x 1.50d in
40.01h x 40.64w x 3.81d cm
CL024

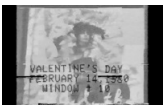


Colette Lumiere
Justine and the Victorian Punks (Records of the Story of My Life), 1978
Mixed media on LP cover
12.50h x 12.50w in
31.75h x 31.75w cm
Framed: 15.75h x 16w x 1.50d in
40.01h x 40.64w x 3.81d cm
CL023

COMPANY



Colette Lumiere
Justine and the Victorian Punks (Records of the Story of My Life), 1978
Mixed media on LP cover
12.50h x 12.50w in
31.75h x 31.75w cm
Framed: 15.75h x 16w x 1.50d in
40.01h x 40.64w x 3.81d cm
CL021



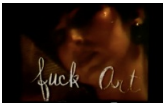
Colette Lumiere
Valentine's Day, 1980
Filmed by Michel Auder, black and white, and sound
TRT: 13 minutes, 8 seconds
CL146



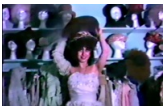
Colette Lumiere
I'orreille, 1973
Filmed by Arnold Newman and featuring an interview by Al Hansen, black and white, and sound
TRT: 9 minutes, 01 seconds
CL147



Colette Lumiere
Justine and the Boys, 1979
Filmed by Robert Polidori, color, sound
TRT: 50 minutes, 11 seconds
CL148

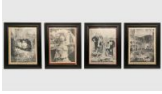


Colette Lumiere
Fuck Art Lets Dance, 1980
Filmed by Elizabeth Cannon with Rudolf at Danceteria, color and sound
TRT: 5 minutes, 46 seconds
CL145



Colette Lumiere
Justine's Home Slides at the Colette is Dead Co., 1979
Filmed by Michel Auder, color and sound
TRT: 60 minutes, 4 seconds
CL060

COMPANY



Colette Lumiere
Let them eat cake; Ragdoll; Justine & the Victorian Punks; Clearance Sale, 1975 - 1978
Vintage photographs
Four parts total
12h x 9w in
30.48h x 22.86w cm each
Framed: Four parts total
15.75h x 12.75w x 0.50d in
40.01h x 32.38w x 1.27d cm each
CL149



Colette Lumiere
Bed Series II, 1975 - 1976
Fabric, photograph, light, and mixed media on wood
32.50h x 19w x 8.50d in
82.55h x 48.26w x 21.59d cm
CL054



Colette Lumiere
Bed Series II, 1975 - 1976
Fabric, photograph, light, and mixed media on wood
32.50h x 19w x 8.50d in
82.55h x 48.26w x 21.59d cm
CL055



Colette Lumiere
Bed Series II, 1975 - 1976
Fabric, photograph, light, and mixed media on wood
32.50h x 19w x 8.50d in
82.55h x 48.26w x 21.59d cm
CL056



Colette Lumiere
Colettesized Lamp (Living Environment Fragment, 1972-83, destroyed by Hurricane Sandy, 2012), 1972-2012
Fabric, photograph, and mixed media on lamp
27h x 14w x 14d in
68.58h x 35.56w x 35.56d cm
CL095

COMPANY



Colette Lumiere
The Messenger, 1978, Reconstruction 2021
Reconstruction of early lightbox, fabric, photograph, lights, plexiglass, and mixed media
84h x 50w x 14d in
213.36h x 127w x 35.56d cm
CL128



Colette Lumiere
Wall Fragments from 'Tomb' installation / PS1 Contemporary Art Center, 1978
Fabric and mixed media on wood
Three parts total
95h x 49w x 3.50d in
241.30h x 124.46w x 8.89d cm each
CL058



Colette Lumiere
Untitled
Fabric, photograph, light, and mixed media in plexiglass box
13h x 11.25w x 7d in
33.02h x 28.58w x 17.78d cm
CL130



Colette Lumiere
Untitled
Fabric, photograph, light, and mixed media in plexiglass box
13h x 11.25w x 7d in
33.02h x 28.58w x 17.78d cm
CL131



Colette Lumiere
Triptych, 1978 - 1980
Fabric, photograph, lights, and mixed media
40h x 19w x 13d in
101.60h x 48.26w x 33.02d cm
CL071

COMPANY



Colette Lumiere
Vintage Slides, 1970s - 1980s
Installation
Dimensions variable
CL150



Colette Lumiere
Les Actions de Justine / Bonco Gallery, Italy (Records of the Story of My Life), 1978
Mixed media on board
12.25h x 12.25w in
31.12h x 31.12w cm
Framed: 16h x 16w x 1.25d in
40.64h x 40.64w x 3.18d cm
CL025



Colette Lumiere
In Memory of Ophelia and All Those Who Died of Love and Madness / Akademie der Künste (Records of the Story of My Life), 1976
Mixed media on board
12.25h x 12.25w in
31.12h x 31.12w cm
Framed: 16h x 16w x 1.25d in
40.64h x 40.64w x 3.18d cm
CL030



Colette Lumiere
Earth Angel (Records of the Story of My Life), 1978
Mixed media on board
12.25h x 12.25w in
31.12h x 31.12w cm
Framed: 16h x 16w x 1.25d in
40.64h x 40.64w x 3.18d cm
CL029



Colette Lumiere
The Modern Bride / Studio 54, New York (Records of the Story of My Life), 1982
Mixed media on board
12.25h x 12.25w in
31.12h x 31.12w cm
Framed: 16h x 16w x 1.25d in
40.64h x 40.64w x 3.18d cm
CL027

COMPANY



Colette Lumiere

Les Actions de Justine / Banco Gallery, Italy (Records of the Story of My Life), 1981

Mixed media on board

12.25h x 12.25w in

31.12h x 31.12w cm

Framed: 16h x 16w x 1.25d in

40.64h x 40.64w x 3.18d cm

CL028



Colette Lumiere

Justine, Deep in the Heart of Texas / Museum of Contemporary Art, Houston, Texas (Records of the Story of My Life), 1981

Mixed media on board

12.25h x 12.25w in

31.12h x 31.12w cm

Framed: 16h x 16w x 1.25d in

40.64h x 40.64w x 3.18d cm

CL026