

# GALERIAPLAN B

Potsdamer Strasse 77-87  
10785 Berlin, Germany  
T. +49.30.39805236  
[contact@plan-b.ro](mailto:contact@plan-b.ro)  
[www.plan-b.ro](http://www.plan-b.ro)

## Becky Beasley Exhibition Checklist

- 
1. **Becky Beasley**  
*The person who disappeared into a building (No. 1)*  
2021  
Archival digital print on Hahnemühle Fine Art Photo Rag  
88 x 66 cm



BB/PH 21

- 
2. **Becky Beasley**  
*BACK! (Ilford Ceramic)*  
2021  
Archival digital print on Hahnemühle Fine Art Photo Rag  
42 x 33 cm



BB/PH 30

- 
3. **Becky Beasley**  
*Me as Andy (1996)*  
2021  
Archival digital print on Hahnemühle Fine Art Photo Rag  
52 x 36.5 cm



BB/PH 32

- 
4. **Becky Beasley**  
*(DUSK II)*  
2021  
Gelatin silverprint, Oak frame  
31 x 38.5 cm



BB/PH 34

- 
5. **Becky Beasley**  
*BACK! (DUSK I)*  
2021  
Gelatin silverprint, Oak frame  
38 x 31.5 cm



BB/PH 33

- 
6. **Becky Beasley**  
*The Bedstead (1939) by Eric Ravilious*  
2021  
Archival digital print on Hahnemühle Fine  
Art Photo Rag  
Towner Art Gallery Collection archive  
documentation  
49 x 675 cm



BB/PH 31

- 
7. **Becky Beasley**  
*Me & You 1975-2021*  
2021  
Rosewood, green acrylic glass, black  
marker pencil, poster version by  
Christopher Williams, Linhof 13x18 DPa.  
APa.Doppelkassette Double Plate and  
Cutfilm older Châssis Double Chasis  
Double-YZDD-Manufactured by Linhof,  
Nikolaus Karpf K.G., Präzisions-Kamera-  
Werke, München 25, West-Germany  
Studio Rhein Verlag, Düsseldorf January  
15, 2016  
79 x 57 cm



BB/PH 35

- 
8. **Becky Beasley**  
*BACK! (B/W)*  
2021  
Archival digital print on Hahnemühle Fine  
Art Photo Rag  
66 x 56 cm



BB/PH 29

- 
9. **Becky Beasley**  
*BACK! (V)*  
2021  
Archival digital print on Hahnemühle Fine  
Art Photo Rag  
66 x 56 cm



BB/PH 28

- 
10. **Becky Beasley**  
*BACK! (I)*  
2021  
Archival digital print on Hahnemühle Fine  
Art Photo Rag  
66 x 56 cm



BB/PH 27

- 
11. **Becky Beasley**  
*BACK! (B)*  
2021  
Archival digital print on Hahnemühle Fine  
Art Photo Rag  
66 x 56 cm



BB/PH 26

- 
12. **Becky Beasley**  
*BACK! (G)*  
2021  
Archival digital print on Hahnemühle Fine  
Art Photo Rag  
66 x 56 cm



BB/PH 25

- 
13. **Becky Beasley**  
*BACK! (Y)*  
2021  
Archival digital print on Hahnemühle Fine  
Art Photo Rag  
66 x 56 cm



BB/PH 24

- 
14. **Becky Beasley**  
*BACK! (O)*  
2021  
Archival digital print on Hahnemühle Fine  
Art Photo Rag  
66 x 56 cm



BB/PH 23

- 
15. **Becky Beasley**  
*BACK! (R)*  
2021  
Archival digital print on Hahnemühle Fine  
Art Photo Rag  
66 x 56 cm



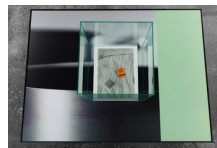
BB/PH 22

- 
16. **Becky Beasley**  
*H. S. P. (or Promising Mid-career Woman)*  
2021  
Linoleum Pink Granite and Petrol  
1m diameter text circle, room dimensions variable



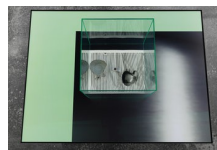
BB/I 1

- 
17. **Becky Beasley**  
*Me & You 1975-2021 (President Hotel Cairo)*  
2021  
Vintage glass, shells, vintage match-book, gelatin silverprint, iron, one quarter cut section of Buchhandlung Walther König's 2018 offset-print edition by Christopher Williams, Töpfe (Pots), original dimensions 195 x 145 cm  
79 x 97.5 x 73 cm



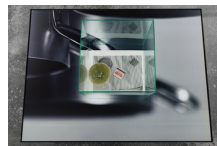
BB/I 2

- 
18. **Becky Beasley**  
*Me & You 1975-2021 (Top of Toronto)*  
2021  
Vintage glass, shells, vintage match-book, gelatin silverprint, iron, one quarter cut section of Buchhandlung Walther König's 2018 offset-print edition by Christopher Williams, Töpfe (Pots), original dimensions 195 x 145 cm  
79 x 97.5 x 73 cm



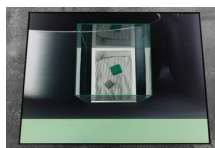
BB/I 3

- 
19. **Becky Beasley**  
*Me & You 1975-2021 (New Lee Ho Fook Chinese Restaurant)*  
2021  
Vintage glass, shells, vintage match-book, gelatin silverprint, iron, one quarter cut section of Buchhandlung Walther König's 2018 offset-print edition by Christopher Williams, Töpfe (Pots), original dimensions 195 x 145 cm  
79 x 97.5 x 73 cm



BB/I 4

- 
20. **Becky Beasley**  
*Me & You 1975-2021 (The Primrose, Bishopsgate)*  
2021  
Vintage glass, shells, vintage match-book, gelatin silverprint, iron, one quarter cut section of Buchhandlung Walther König's 2018 offset-print edition by Christopher Williams, Töpfe (Pots), original dimensions 195 x 145 cm  
79 x 97.5 x 73 cm



BB/I 5

- 
21. **Becky Beasley**  
*H.S.P.*  
2021  
powder-coated steel tubes, steel wires, brass artist-designed picture hangers, linen  
dimensions variable



BB/I 13

- 
22. **Becky Beasley**  
*Je dors, je travaille (Autant au vent/ Gone with the wind)*  
2021  
Ceramic, book, glass effect acrylic glass box, vintage stool  
80.5 x 45 x 43.5 cm



BB/I 6

- 
23. **Becky Beasley**  
*Je dors, je travaille (Food I)*  
2021  
Ceramic, book, glass effect acrylic glass box, vintage stool  
81.5 x 43.5 x 43.5 cm



BB/I 7

- 
24. **Becky Beasley**  
*Je dors, je travaille (Food II)*  
2021  
Ceramic, book, glass effect acrylic glass  
box, vintage stool  
80 x 40 x 39.5 cm



BB/I 8

- 
25. **Becky Beasley**  
*Je dors, je travaille (Lucie Rie)*  
2021  
Ceramic, book, glass effect acrylic glass  
box, vintage stool  
81 x 42 x 43.5 cm



BB/I 9

- 
26. **Becky Beasley**  
*Je dors, je travaille (Food III)*  
2021  
Ceramic, book, glass effect acrylic glass  
box, vintage stool  
78.5 x 40 x 39 cm



BB/I 10

- 
27. **Becky Beasley**  
*Je dors, je travaille (Fictional Characters)*  
2021  
Ceramic, book, glass effect acrylic glass  
box, vintage stool  
78 x 39 x 39.5 cm



BB/I 11

---

28. **Becky Beasley**

*Je dors, je travaille (Encyclopedia of Photography)*

2021

Ceramic, book, glass effect acrylic glass box, vintage stool

79 x 40 x 39.5 cm



BB/I 12