

SOMEDAY

Entrainment

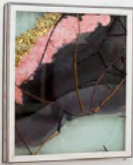
December 10, 2021 - January 29, 2022

Opening Reception: December 9, 6-8PM

Cameron Clayborn, Rachelle Dang, Joel Dean, Tishan Hsu, Tatsuo Ikeda, Carly Mandel, Justin Sterling, Sergio Suárez, Yi To, David Wojnarowicz

Someday is happy to announce "Entrainment" opening Thursday December 9 from 6-8PM. Entrainment is defined as a temporal synching process in which one system's motion or signal frequency adjusts to that of an interfacing system, until they are balanced. Common examples include the self-harmonization of pendulum clocks and the flight patterns of sparrows - phenomena that illustrate a universal pursuit of homeostasis and the unseen forces that influence physical and biological systems. Certain social behaviors can also be understood through this process. Neural activity responds in complex ways to rhythmic stimulus, causing relaxation or distress - group meditators more easily reach delta brainwave states than those in isolation; weepy plane passengers become entangled, contaminated by one another's emotive frequencies.

The artists in the exhibition speak to the concept of entrainment both literally and metaphorically. Tishan Hsu's sculptural paintings allude to the fusing of technology and the human body as two interfacing systems that seek to integrate. Cameron Clayborn's hermetic figures appear to seal themselves off from external stimuli, functioning instead as "avatars" less vulnerable to the violence of embodied experience. Tatsuo Ikeda illustrates the perverse implications of warfare and the growing anthropic dissonance between naturally interdependent elements - animal, vegetable and mineral. Rachelle Dang considers the environmental ramifications of colonialism and the mass-disruption of natural ecosystems that struggle to restore balance to this day. Through disparate means, the artists trace the invisible, energetic filaments that connect all living and nonliving matter and the equally elusive "flows of empathy" that allow us to intuit these non-discrete elements.









Tatsuo Ikeda
Toy World, 1967
Ink on paper
16.25 x 12.25" (41.3 x 32.4cm)



David Wojnarowicz
Money Bee II, 1990
Color photograph
9.25 x 14" (23.5 x 35.56cm)





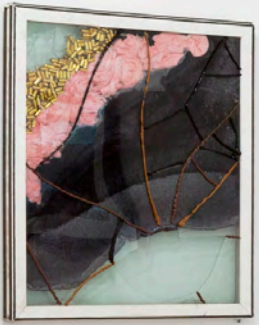
Carly Mandel
Mall Pretzel, 2021
Bronze, aluminum
25 x 18 5"

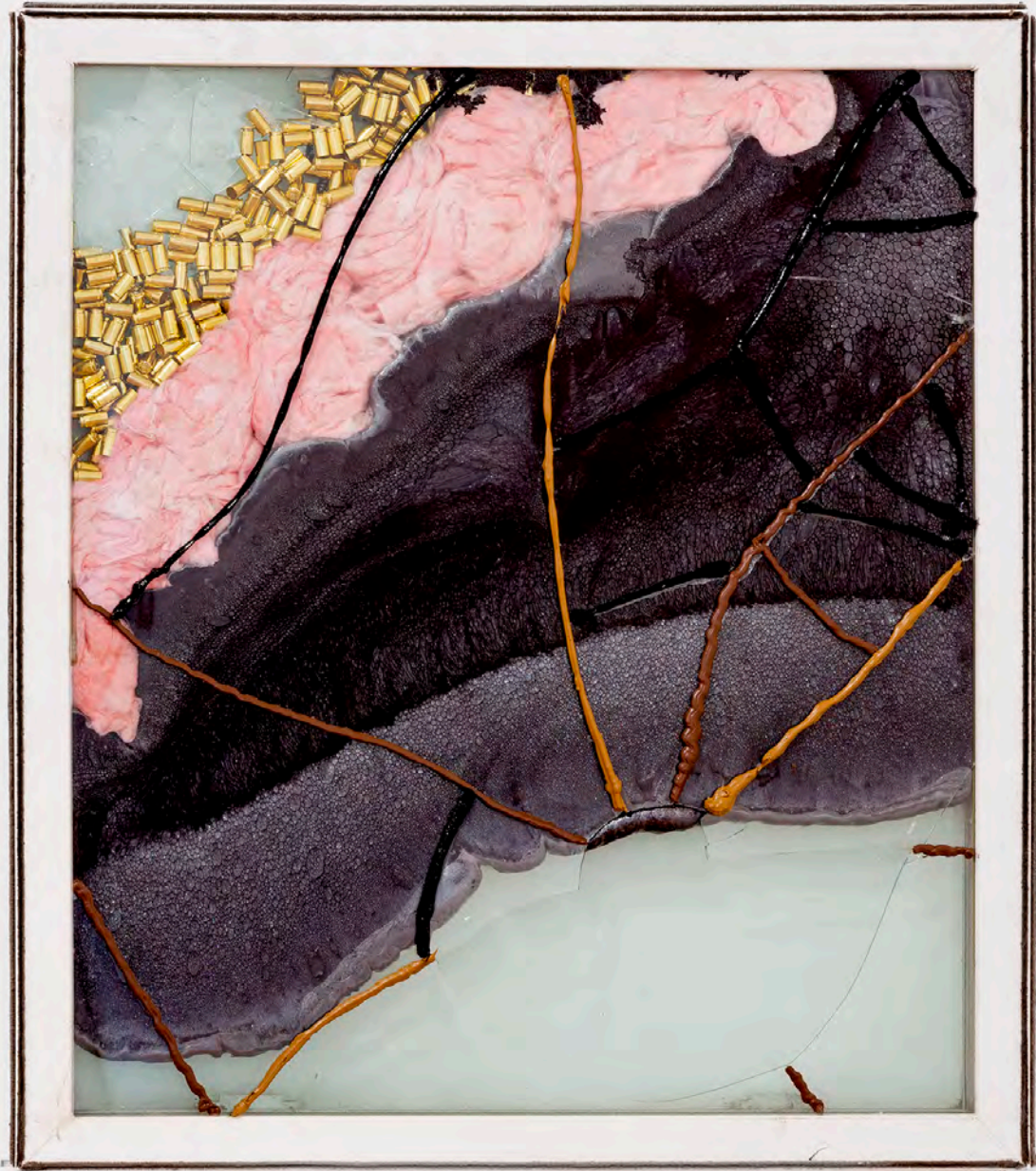




Joel Dean
Small World Express: Engine #1, 2021
Oil on canvas
51.5 x 81"







Justin Sterling
Renegade (after Mark Gonzalez), 2021
Found window, fiberglass, bullet casings,
insulation foam, caulking
31 x 28 x 2"





What is this little guy's job in the world. If this little guy dies does the world know? Does the world feel this? Does something get displaced? If this little guy dies does the world get a little lighter? Does the planet rotate a little faster? If this little guy dies, without his body to shift the currents of air, does the air flow perceptibly faster? What shifts if this little guy dies? Do people speak language a little bit differently? If this little guy dies does some little kid somewhere wake up with a bad dream? Does an almost imperceptible link in the chain snap? Will civilization stumble?

David Wojnarowicz
What is this little guy's job in the world, 1990
B&W photograph (2 APs)
13.75 x 18.8" (34.9 x 47.3cm)





Carly Mandel
Glass Handbag +Lozenges, 2021
26 x 16.5 x 13"





Yi To
Bootstrap Paradox, 2021
Oil on canvas
59 x 51.2" (150 x 130cm)





Justin Sterling
Cycles (after Tori Verber Salazar), 2021
Found window, organic matter, soil, gravel,
caulking
37 x 31 x 2"









Rachele Dang
Lodestar, 2021
Salvaged aluminum, wire mesh, air dried
clay, epoxy, resin, paint
46 x 72 x 36"



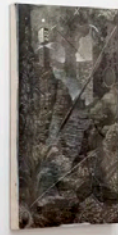
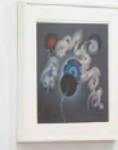








Tatsuo Ikeda
A Heavy Balancing Toy, 1967
Mixed media
15.5 x 12.25" (39.3 x 31cm)





Cameron Clayborn
Cushioncontainercapsule, 2021
Demin, fiber fill, sand, vinyl, velcro, zipper
41 x 20 x 9.5" (104.14 x 50.8 x 24.13cm)







Tatsuo Ikeda
Untitled, 1979
Acrylic on paper
15.5 x 15.5" (39.5 x 39.5cm)



Sergio Suárez
Cave, 2021
40 x 30"
Woodcut print, caulk pastel,
charcoal and wax pencil on muslin

