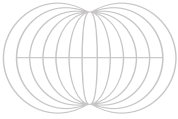


EXHIBITIONS

JILL MULLEADY

BLOOD FOG

F I T Z P A T R I C K



CONSORTIUM MUSEUM, DIJON
JULY 07, 2021 - JANUARY 09, 2022

Blood Fog, Jill Mulleady's exhibition at the Consortium Museum, does not deprive to make use of any subterfuge, any camouflage as it charts its singular course. Scene after scene, room after room, paintings and objects carefully selected by the artist reveal the ruins of a civilization already consumed—an imaginary world blown to pieces.

The story is already in motion as a pair of painted eyes – an artifact from a looted Egyptian sarcophagus, replicated by the artist – fixes you with the otherness of a (fe)male gaze... and the remoteness of an immemorial but now lost Antiquity.

Alongside this gaze, the painting of a cobra hypnotizes the spectator with an irresolvable ambiguity: the threat of fatal intoxication or a promise of protection. We have no choice.

In the corridor, like an antechamber, a Baccarat lamp snatched either from a brothel or a comfortable bourgeois interior (is there any difference?), illuminates a new series of paintings. Its red glow is reflected in the painted mirror placed at the end of the room, inviting viewers to double themselves too – as if in a story by Pierre Klossowski – and to mingle with sinuous, painted bodies.

[Hamlet, John Gielgud, Emma Bovary, Claude Chabrol, Isabelle Huppert,...]

Life in the garrison towns of the East, life in the trading towns of the Southwest, life in the port towns of the English Channel, life in new white and blue seaside towns, life for the benefit of an always deferred hope, burning life that smolders in silvery taffetas, life sitting on comfortably soft upholstery... All these lives are also my own as a spectator today.

[Intoxication, Crime, Aspiration, Landscape, Downfall, Transcendence, Coup de Foudre, Courbet and Flaubert, Rimbaud and Artaud...]

The paintings show languid bodies in domestic or outdoor settings. Liquid, transparent color is applied on raw linen canvas – the medium of the Moderns. Tilted faces lean on long and idle hands, à la Cocteau—he who kept his jacket sleeves unbuttoned on purpose.

Echoing the paintings, constellations of found and made objects.

Here, as if pulled from one of the canvases, placed at an angle, the iron frame of a vaguely Napoleon III-style bed has been sprinkled with coarse grey salt... to neutralize the spells that fellow vampires of Mulleady's generation would not have failed to cast. A dueling pistol has been forgotten on the edge of the bed frame. How many lead bullets has it shot through the skin of unlucky losers?

There, two rough cement planters have been sown with growing mustard seeds which will bloom with yellow flowers during the course of the exhibition.

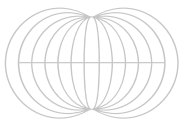
Jill Mulleady has taken up residence at the Consortium Museum. Here she weaves a dreamlike, familiar "domestic life" filled with signs and their shifting layers of meanings—wether through their provenance, their relationship to historical context, or their currency as universal icons.

An imaginary interior for the already dead heroine of a novel combines the garret and the living-room, a corner sink and a devoured by moths, hand woven wool blue Chinese rug on the floor. These objects serve as clues, weaving the intermittent narrative from the paintings.

[Orpheus & Eurydice, Giotto and Egyptian Tombs...]

A 14th century Veronica made of stone with faint traces of polychrome paint, borrowed from the rooms of the Dijon Museum of Fine Arts, lifts the veil in a stifling jungle atmosphere conducive to slithering cobras.

JILL MULLEADY *BLOOD FOG*



CONSORTIUM MUSEUM, DIJON
JULY 07, 2021 - JANUARY 09, 2022

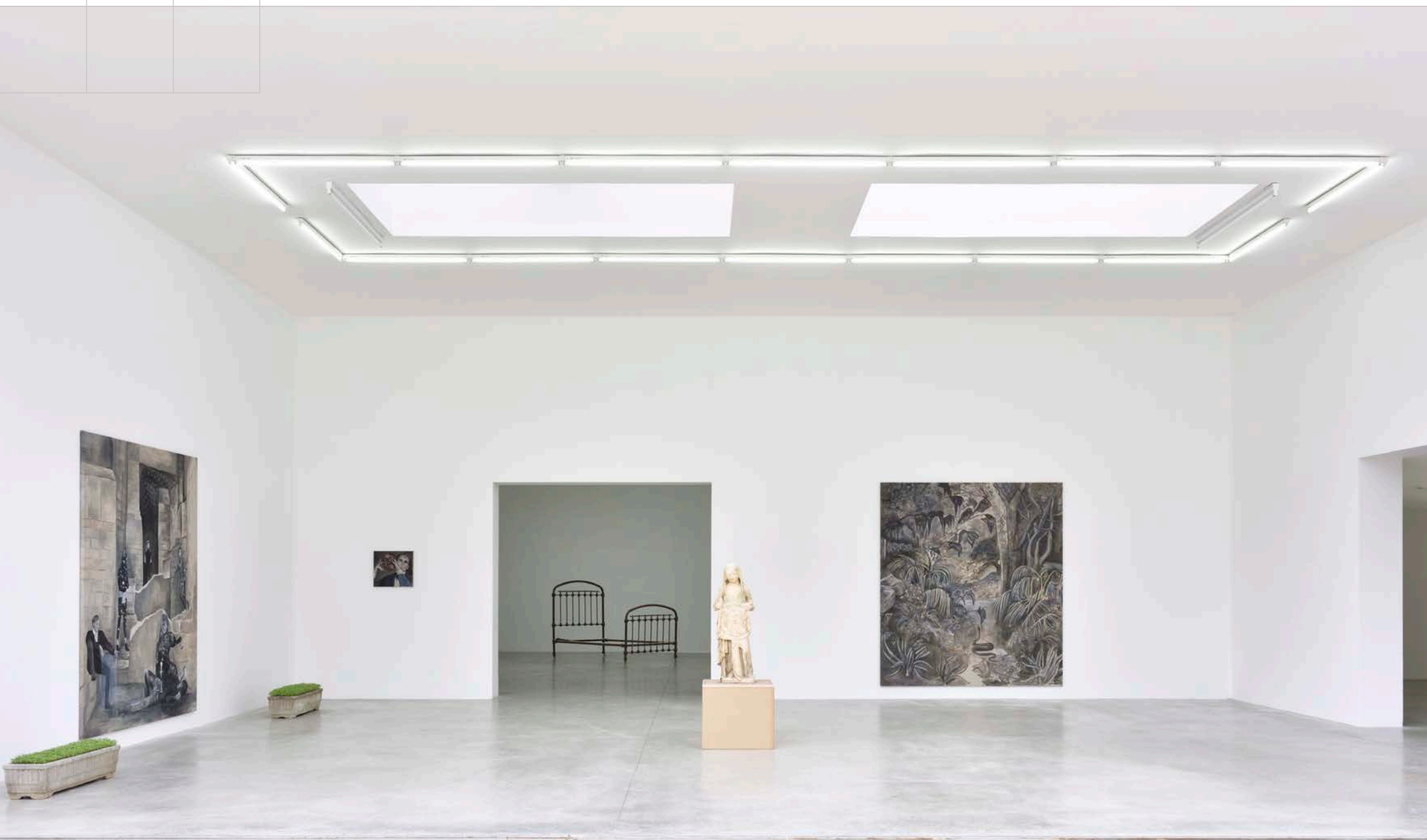
This new world has been built on secret strategies and Baudelairian correspondences—according to the poet, only artists are able to decipher the meaning of those allegories that can take us from the world of perceptions to the world of ideas, from the sensitive to the tangible, and from emotions to knowledge.

The figures, things and characters that populate this exhibition compose an immersive landscape, an imaginary world that Mulleady navigates with ease and grace.

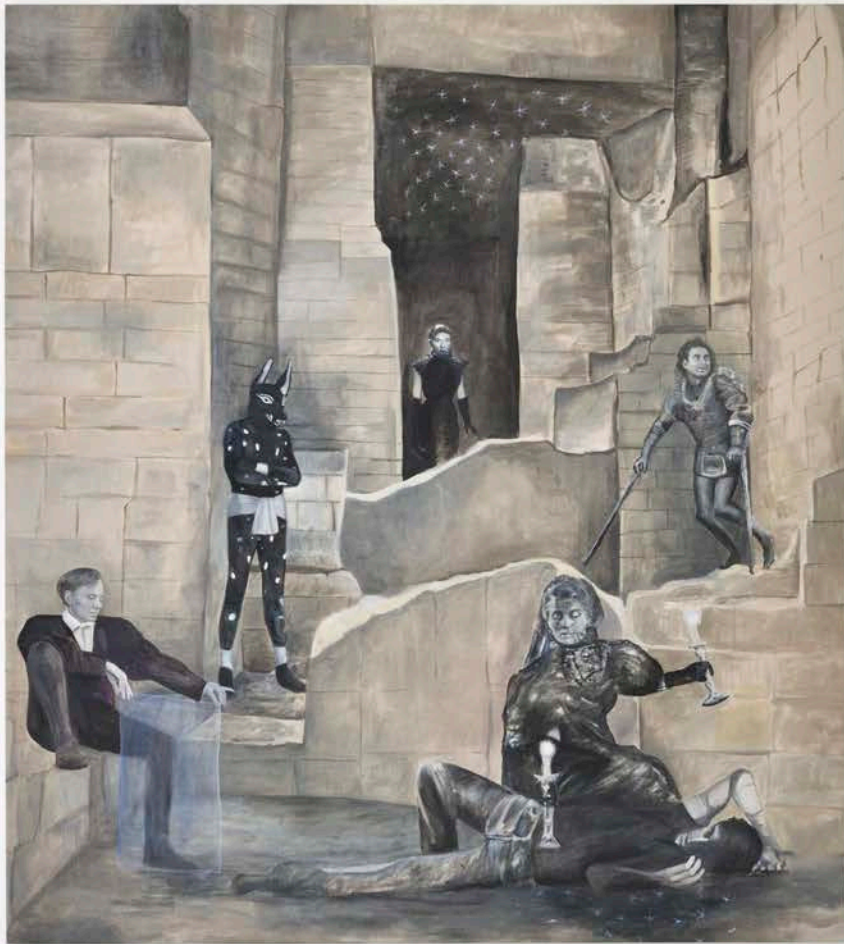
— Franck Gautherot & Seungduk Kim

F I T Z P A T R I C K

JILL MULLEADY *BLOOD FOG*



Jill Mulleady
Installation View
Blood Fog
Consortium Museum
July 7, 2021 - Jan 9, 2022



Jill Mulleady
Installation View
Blood Fog
Consortium Museum
July 7, 2021 - Jan 9, 2022

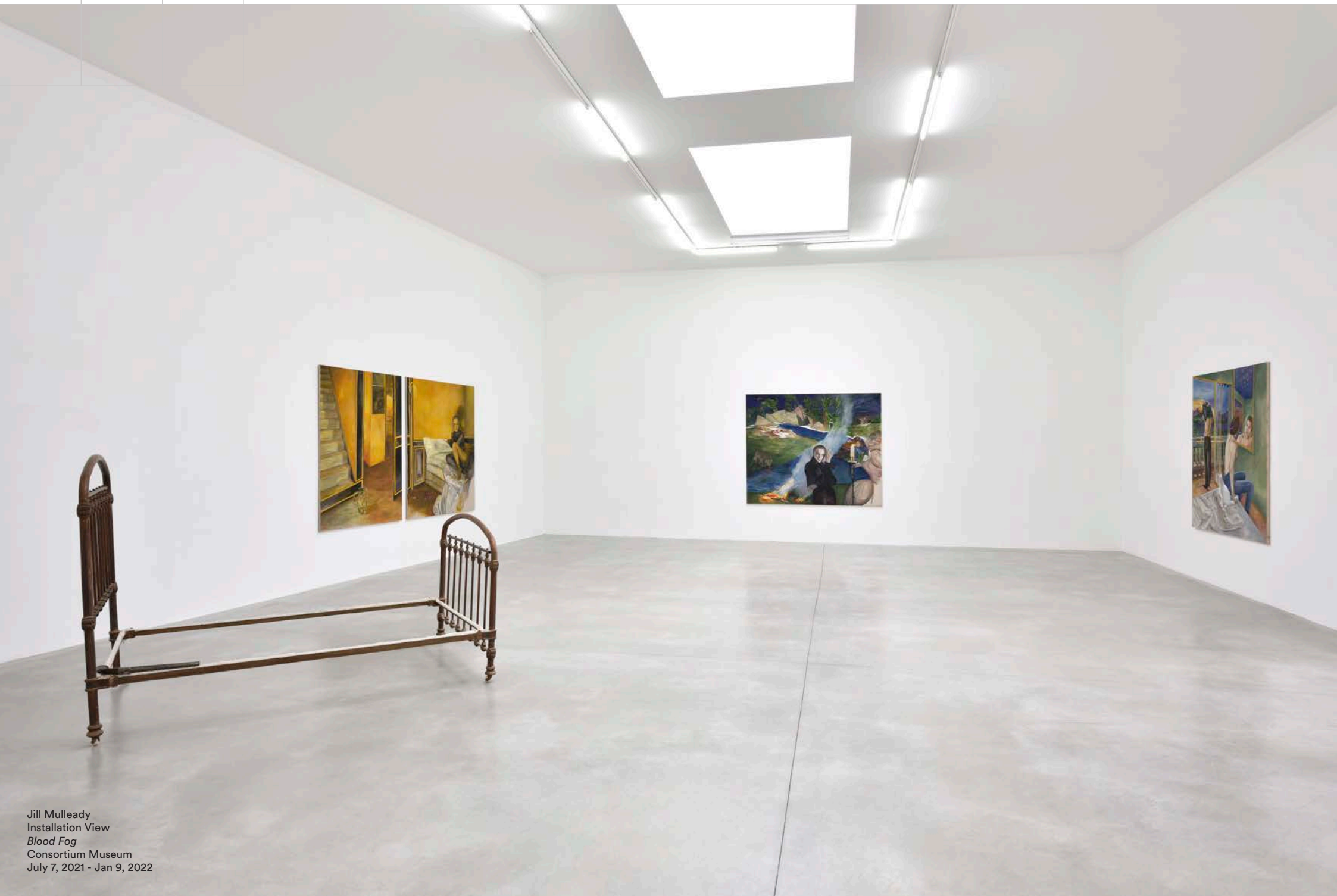


JILL MULLEADY *BLOOD FOG*



Jill Mulleady
Installation View
Blood Fog
Consortium Museum
July 7, 2021 - Jan 9, 2022

JILL MULLEADY *BLOOD FOG*



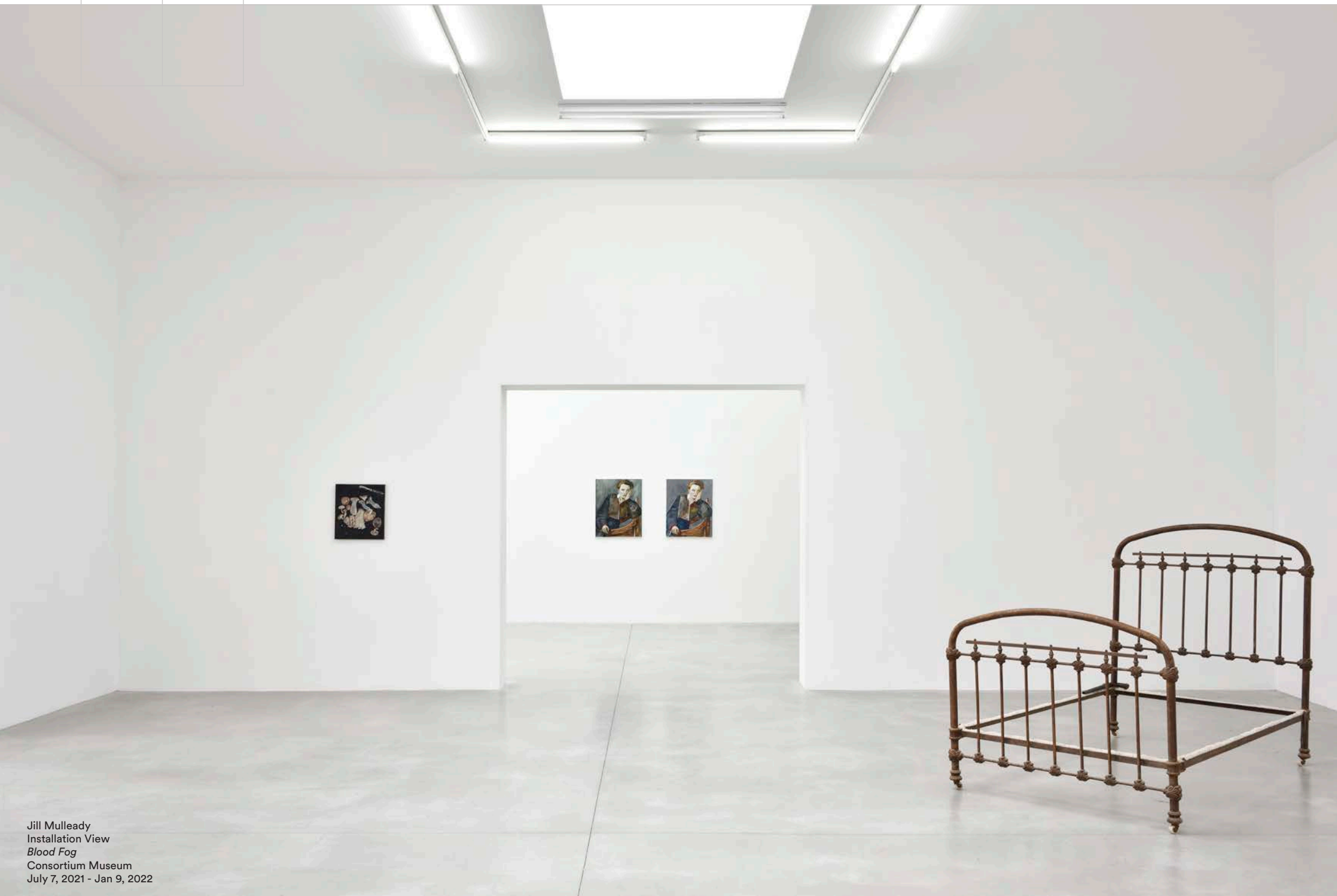
Jill Mulleady
Installation View
Blood Fog
Consortium Museum
July 7, 2021 - Jan 9, 2022

JILL MULLEADY *BLOOD FOG*



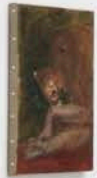
Jill Mulleady
Installation View
Blood Fog
Consortium Museum
July 7, 2021 - Jan 9, 2022

JILL MULLEADY *BLOOD FOG*



Jill Mulleady
Installation View
Blood Fog
Consortium Museum
July 7, 2021 - Jan 9, 2022

JILL MULLEADY *BLOOD FOG*



Jill Mulleady
Installation View
Blood Fog
Consortium Museum
July 7, 2021 - Jan 9, 2022



Jill Mulleady
Installation View
Blood Fog
Consortium Museum
July 7, 2021 - Jan 9, 2022

JILL MULLEADY *BLOOD FOG*



JILL MULLEADY *BLOOD FOG*

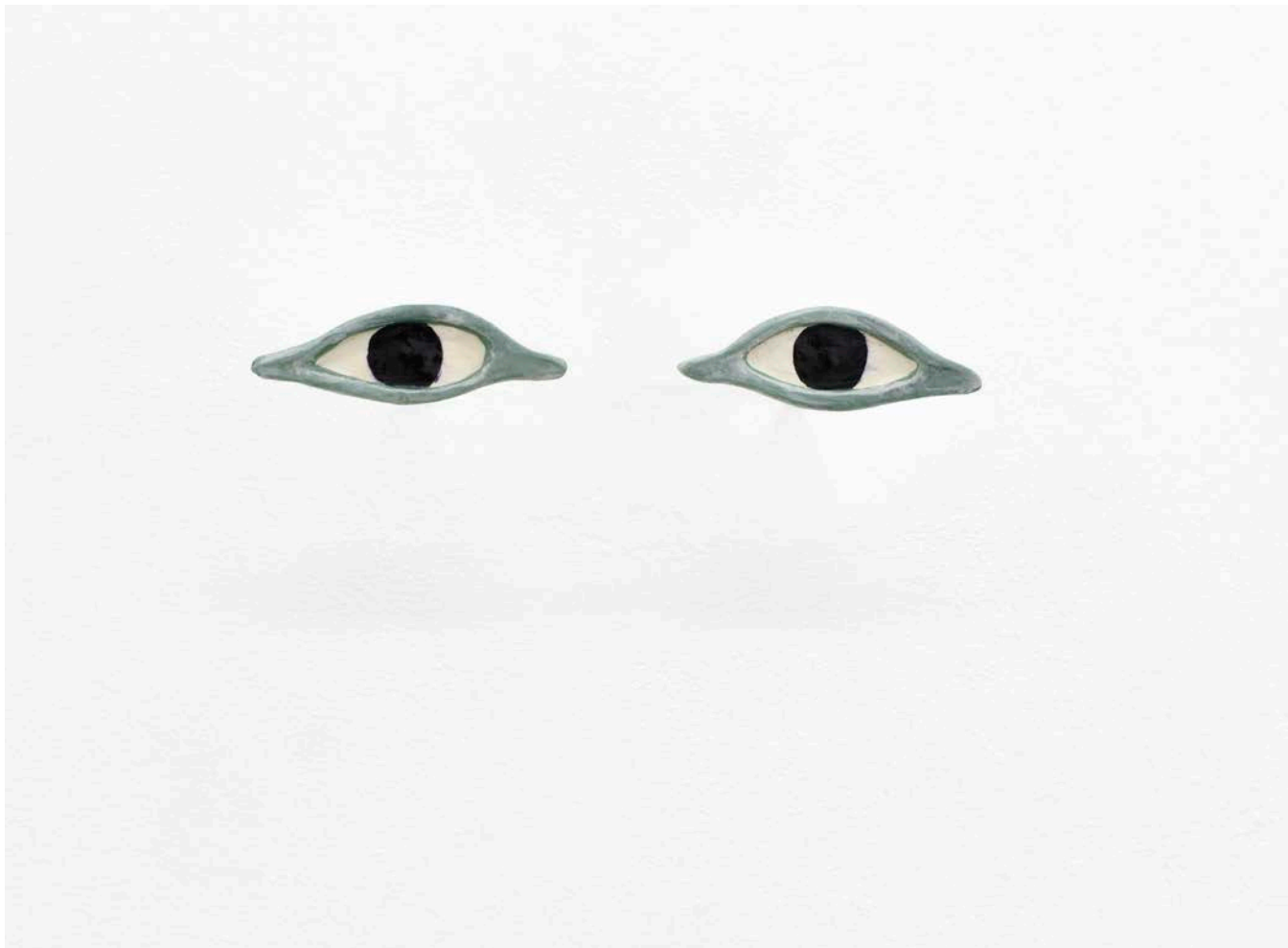


Jill Mulleady
Installation View
Blood Fog
Consortium Museum
July 7, 2021 - Jan 9, 2022

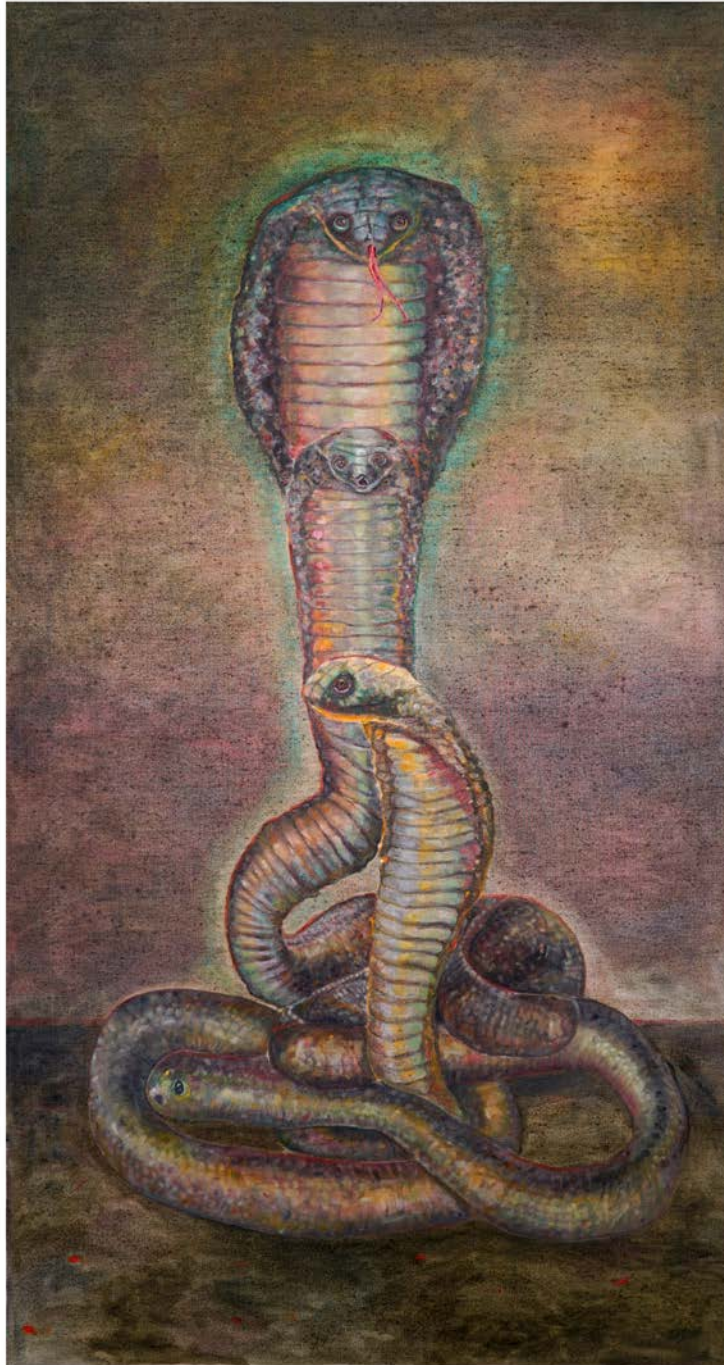
JILL MULLEADY *BLOOD FOG*



Jill Mulleady
Installation View
Blood Fog
Consortium Museum
July 7, 2021 - Jan 9, 2022



Jill Mulleady
*Egyptian Eyes from Sar-
cophage*, 2021
Artist-made porcelain replica
Dimensions variable



Jill Mulleady
Cobra, 2021
Oil on linen
168 x 90 cm
66 1/8 x 35 3/8 in



Jill Mulleady
Madame Bovary, 2021
Oil on linen
41 x 46 cm
16 1/8 x 18 1/8 in



Jill Mulleady
Untitled, 2020
Oil on linen
40 x 33 cm
15 3/4 x 13 in



Jill Mulleady
Hamlet I, 2021
Oil on Linen
76 x 61 cm
29 7/8 x 24 1/8 in



Jill Mulleady
Shadowplay, 2020
Oil on tin-mercury mirror
87 x 46 inches
221 x 117 cm



Jill Mulleady
Untitled, 2021
Napoleon III style wrought
iron bed, 19th century dueling
pistol, sea salt
90 x 180 x 120 cm
35 3/8 x 70 7/8 x 47 1/4 in



Jill Mulleady
18 Rue Souveraine, 1050, 2020
Oil on linen
168 x 276.9 cm
66 1/8 x 109 1/8 in



Jill Mulleady
Gardens of the Blind, 2020
Oil on linen
66.14h x 78.74w in
168h x 200w cm



Jill Mulleady
White Pussy, 2021
Oil on linen
168 x 152 cm
66 1/8 x 59 7/8 in



Jill Mulleady
Madame Bovary, 2021
Oil on linen
41 x 46 cm
16 1/8 x 18 1/8 in



Jill Mulleady
Orpheus, 2021
Oil on linen
235 x 208 cm
92 1/2 x 81 7/8 in



Jill Mulleady
Drama, 2021
Oil on Linen
41 x 45 cm
16 1/8 x 17 3/4 in



Jill Mulleady
Untitled, 2021
Oil on linen
235 x 208 cm
92 1/2 x 81 7/8 in



Jill Mulleady
Strawberries, 2020
Oil on linen
40 x 33 cm
15 3/4 x 13 in



Jill Mulleady
Blood Fog, 2021
Oil on linen
90 x 43 cm
35 3/8 x 16 7/8 in



Jill Mulleady
Psychic Landscape, 2019
Oil on canvas
35.43h x 35.43w in
90h x 90w cm



Jill Mulleady
Untitled, 2021
Corner sink, crystal bottle and
blackcurrant liquor.
30 x 49.5 x 49.5 cm
11 3/4 x 19 1/2 x 19 1/2 in



Jill Mulleady
Feral, 2021
Oil on linen
50 x 65 cm
19 3/4 x 25 5/8 in



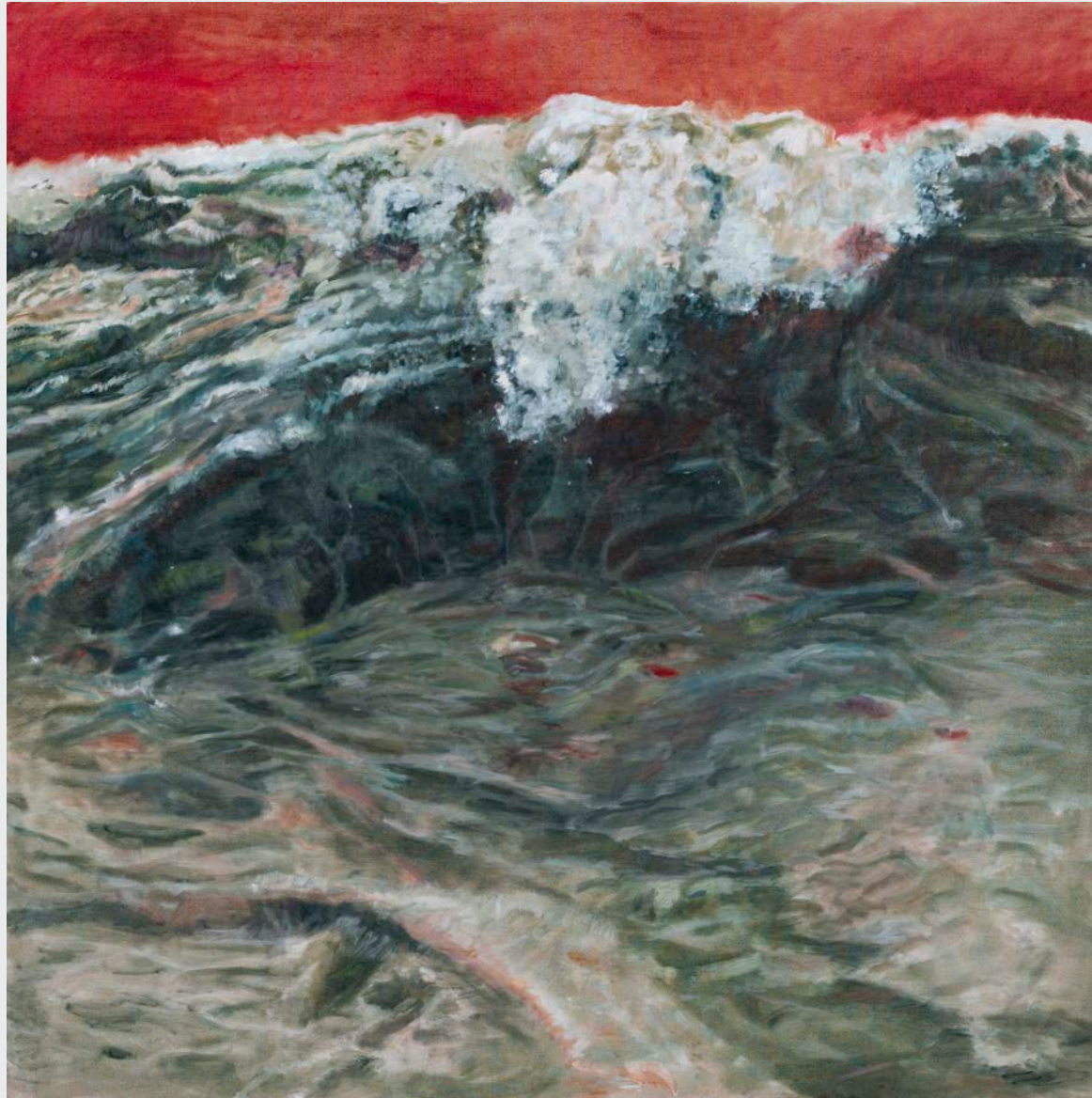
Jill Mulleady
*A thought that never changes
remains a stupid lie*, 2020
Oil on linen
35.43h x 35.43w in
90h x 90w cm



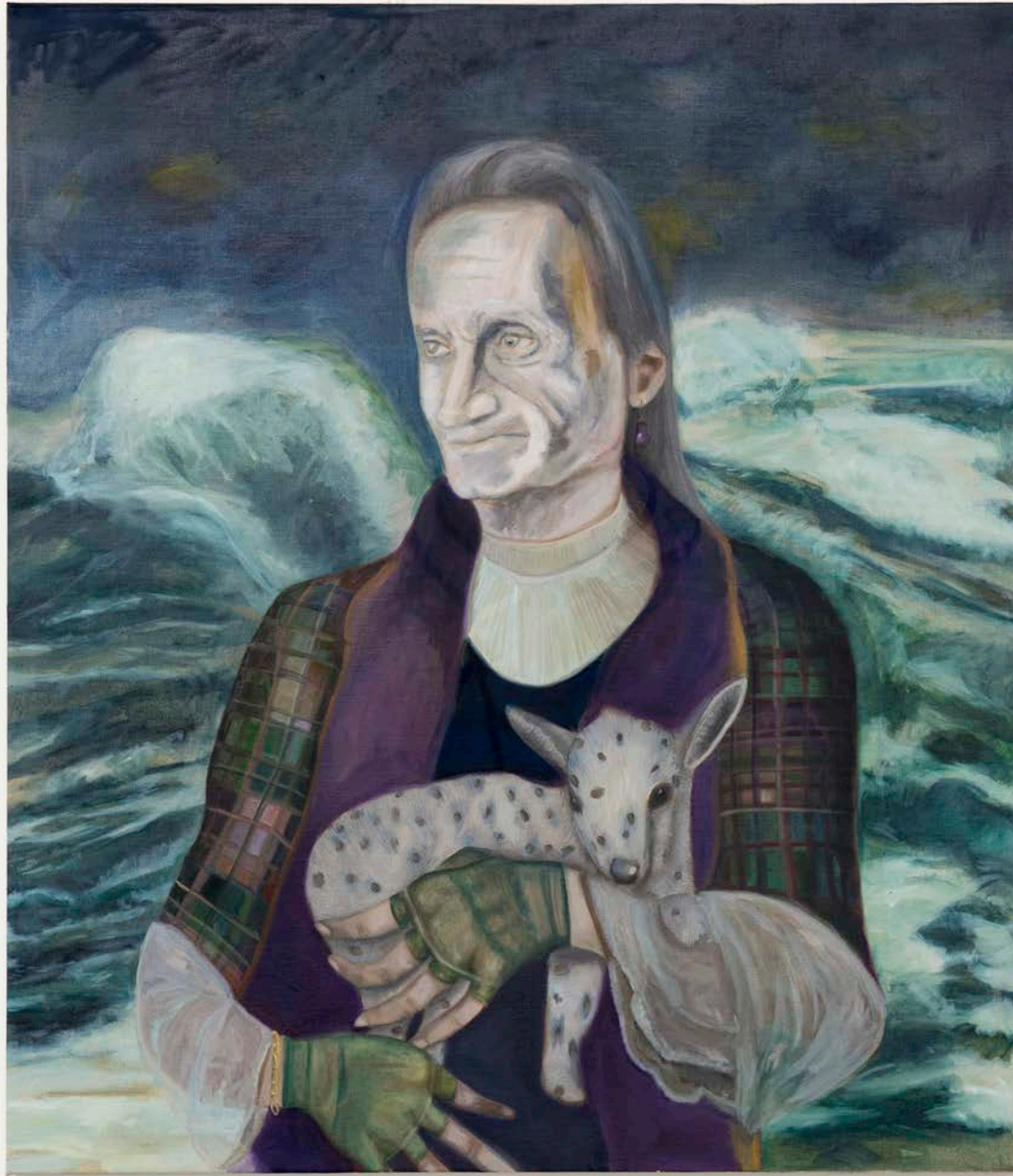
Jill Mulleady
Ashes, 2021
Oil on linen
168 x 200 cm
66 1/8 x 78 3/4 in



Jill Mulleady
Snow Blood, 2021
Oil on linen
140 x 180 cm
55 1/8 x 70 7/8 in



Jill Mulleady
Fighting the Devils Futility,
2020
Oil on Linen
168 x 168 cm
66 1/8 x 66 1/8 in



Jill Mulleady
Dementia, 2018
Oil on linen
48.03h x 41.73w in
122h x 106w cm



Jill Mulleady
The Green Wave, 2018
Oil on linen
48.03h x 67.72w in
122h x 172w cm