

Inhabitants

16. October – 13. November 2021

Opening: 15. October, 7–10 pm

Hadassah Emmerich

Hanna Stiegeler

Inhabitants of a reflection.
Inhabitants of a look.
Inhabitants of deception.
Inhabitants taking a walk.

Inhabitants as decoration.
Inhabitants of clothes.
Inhabitants of declarations.
Inhabitants in oaths.

Inhabitants switching positions
Inhabitants changing sides.
Inhabitants of a submission.
Inhabitants of a bribe.

Inhabitants of an unspoken rule.
Inhabitants behind a wall.
Inhabitants of what should be true.
Inhabitants making a call.

Inhabitants of whispers
Inhabitants drawing lines.
Inhabitants becoming sisters.
Inhabitants becoming a shrine.

Inhabitants as my chin on your chest.
Inhabitants taking a rest.

Hanna Stiegeler (b.1985, Konstanz) completed her Meisterstudium at HGB Leipzig and also studied at UdK Berlin and Art Academy Warsaw. Her works have most recently been on view at Gems, NYC, Sweetwater, Berlin, Galerie Eigen+Art in Leipzig and in the Collection of State Saxony. Stiegeler lives and works in Berlin

Hadassah Emmerich (b. 1974, Heerlen) studied at the Academy of Fine Arts in Maastricht, HISK Flanders and Goldsmiths College, London. Recent exhibitions include: Trailblazers, 150 years Royal Award for Painting, Royal Palace, Amsterdam 2021; BXL Universel II: multipli.city, CENTRALE for contemporary art, Brussels, 2021; Hallelujah God is a Woman, Valerius Gallery, Luxemburg, 2021; Buah Tangan, ISA Art Gallery, Jakarta, 2020; The Great Ephemeral Skin, De Garage, Mechelen (B), 2019; The HISK Connection, KANAL Brussels, 2019. Her work is represented in the collections of a.o.: Museum Voorlinden, Wassenaar; Federal Government, Brussels; Rijksmuseum Amsterdam; Bonnefantenmuseum Maastricht; Flemish Parlement, Brussels; Gemeentemuseum Den Haag; Museum voor Moderne Kunst Arnhem; Ministry of Foreign Affairs, The Hague. Emmerich lives and works in Brussels.



The Tail

Avenue Jacques Sermon 83, 1090 Bruxelles

thetail.be

List of works, clock'wise from the entrance left:

Hanna Stiegeler
la plaie et le couteau
robes, jabot (screenprint on textile), coat rack
183 x 45 x 45 cm
2021



Hadassah Emmerich
Cold Fusion (CTrou)
oil on paper
35 x 26,5 cm
2021



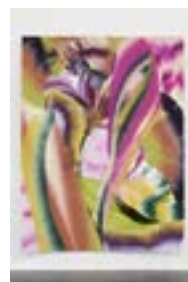
Hadassah Emmerich
Cold Fusion (Poppy)
oil on paper
35 x 26,5 cm
2021



Hadassah Emmerich
Cold Fusion (Red Fields)
oil on paper
35 x 26,5 cm
2021



Hadassah Emmerich
Cold Fusion (Marble Wind)
oil on paper
35 x 26,5 cm
2021



Hadassah Emmerich
Cold Fusion (Cosmic)
oil on paper
35 x 26,5 cm
2021



Hadassah Emmerich
Cold Fusion (Calla)
oil on paper
35 x 26,5 cm
2021



Hadassah Emmerich
Naked Tulips
Oil on linen
145 x 105 cm
2019



Hanna Stiegeler
Das unausgesprochene Gegenüber
polystyrol, screenprint, stainless steel
198 x 50 x 40 cm
2021

