

dépendance

4 rue du marché aux porcs  
1000 brussels  
t +32 2 217 74 00  
www. dependance.be  
info@dependance.be

**L' ÉVIDENCE ÉTERNELLE**  
15 January - 26 February, 2022

HANS BREDER  
LILI DUJOURIE  
MARLEY FREEMAN  
LINDER  
MEG LIPKE

Curated by Louis-Philippe Van Eeckhoutte

# dépendance

4 rue du marché aux porcs  
1000 brussels  
t +32 2 217 74 00  
www. dependance.be  
info@dependance.be

## L'ÉVIDENCE ÉTERNELLE

15 January - 26 February, 2022

HANS BREDER  
LILI DUJOURIE  
MARLEY FREEMAN  
LINDER  
MEG LIPKE

Curated by Louis-Philippe Van Eeckhoutte

### Press Release

At the beginning of 1930, when René Magritte was experimenting with the physical conventions of painting itself, he created *L'Évidence éternelle*, a standing nude of his model and wife, Georgette which is divided into five separate framed sections. *L'Évidence éternelle* is one of Magritte's *toiles découpées* or cut-up canvases. It exists between painting and sculpture, and Magritte referred to these works as objects, not paintings. With the *toiles découpées*, Magritte forced the viewer to complete the image in his mind.

In 1948, Magritte completed another version of the work in which the model is portrayed in a frontal view. He attempted a third version in 1954. The completion of this last version remained uncertain since, until recently, only three canvases have been traced: the face, the breast, and the knees. Magritte offered the canvas of the breast and the one of the knees to Suzi Gablik, an American author who lived with the Magittes for eight months in 1960. Gablik kept the knees and sold the breasts to Robert Rauschenberg.

*L'Évidence éternelle* brings together five artists who deal with the delineations of space and perception and of abstraction and figuration. They break up, layer, stitch and fracture images and by doing so reflect the limits of human perception, showing that the reality we perceive is fragmented. Aware of the tension between composition and fragmentation, their work asks the viewer to mentally reconstruct a whole from separate parts.

Hans Breder uses a mirrored surface to create a connection between space, body, and the fragmentation of form in his *Body/Sculpture* series from 1969-73. The mirrors not only dissolve the boundaries of space but disorient the observer's view of the nude models, which include artist Ana Mendieta lying on the sand. Like the works of Linder — in which she conceals images of ballerinas with splashes of enamel paint — they incorporate classical sculpture and dance as well as body art and performance.

Meg Lipke bridges diverse textile traditions and modes of painterly abstraction in her practice. Her vibrantly colored works are cut and sewn out of canvas and tightly stuffed with polyester fill. She sees these surreal wall-mounted soft objects as paintings. Their sculptural presence suggests empty picture frames or the interior of the body. The canvas is used as a skin and painted and stained in pastel and iridescent colors with folkloric and psychedelic patterning. The image-making of Marley Freeman also relates to textiles and their varying levels of transparency. In her paintings, she weaves together patches of color. She builds layer on layer with opaque and transparent brushstrokes, blurring the previous gestures to fragment the moment of their action. In her minimalistic collages from the seventies, Lili Dujourie uses pieces of colored paper that overlap each other. The emptiness around the textural composition of torn edges, creases, and tears is as decisive as the fragments. In between presence and absence, these still lifes do not depict anything other than their own forms.



dépendance

4 rue du marché aux porcs  
1000 brussels  
t +32 2 217 74 00  
[www.dependance.be](http://www.dependance.be)  
[info@dependance.be](mailto:info@dependance.be)

**L'ÉVIDENCE ÉTERNELLE**  
2022

Installation view  
dépendance, Brussels



dépendance

4 rue du marché aux porcs  
1000 brussels  
t +32 2 217 74 00  
[www.dependance.be](http://www.dependance.be)  
[info@dependance.be](mailto:info@dependance.be)

**L'ÉVIDENCE ÉTERNELLE**  
2022

Installation view  
dépendance, Brussels





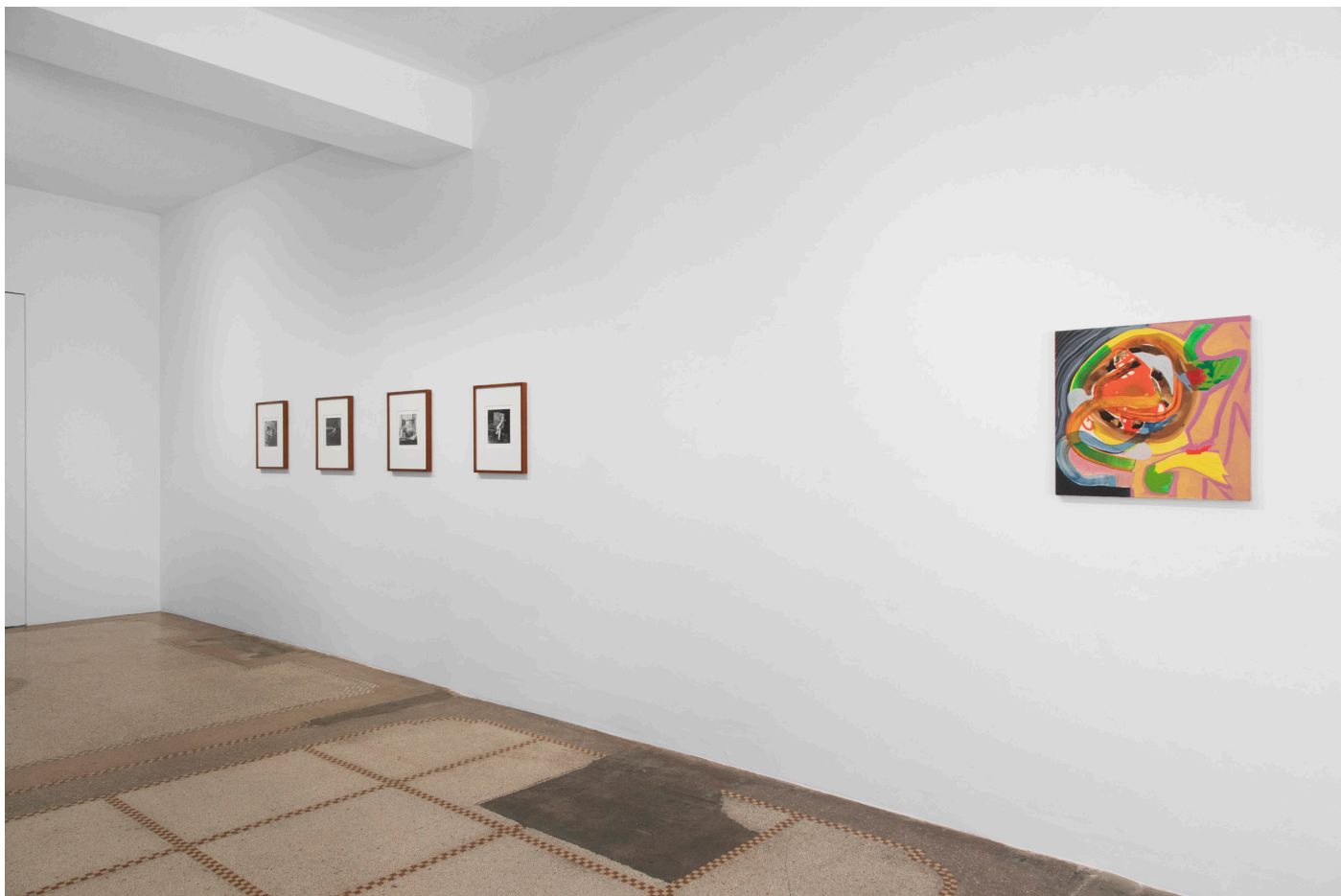
dépendance

4 rue du marché aux porcs  
1000 brussels  
t +32 2 217 74 00  
[www.dependance.be](http://www.dependance.be)  
[info@dependance.be](mailto:info@dependance.be)

**L'ÉVIDENCE ÉTERNELLE**

2022

Installation view  
dépendance, Brussels

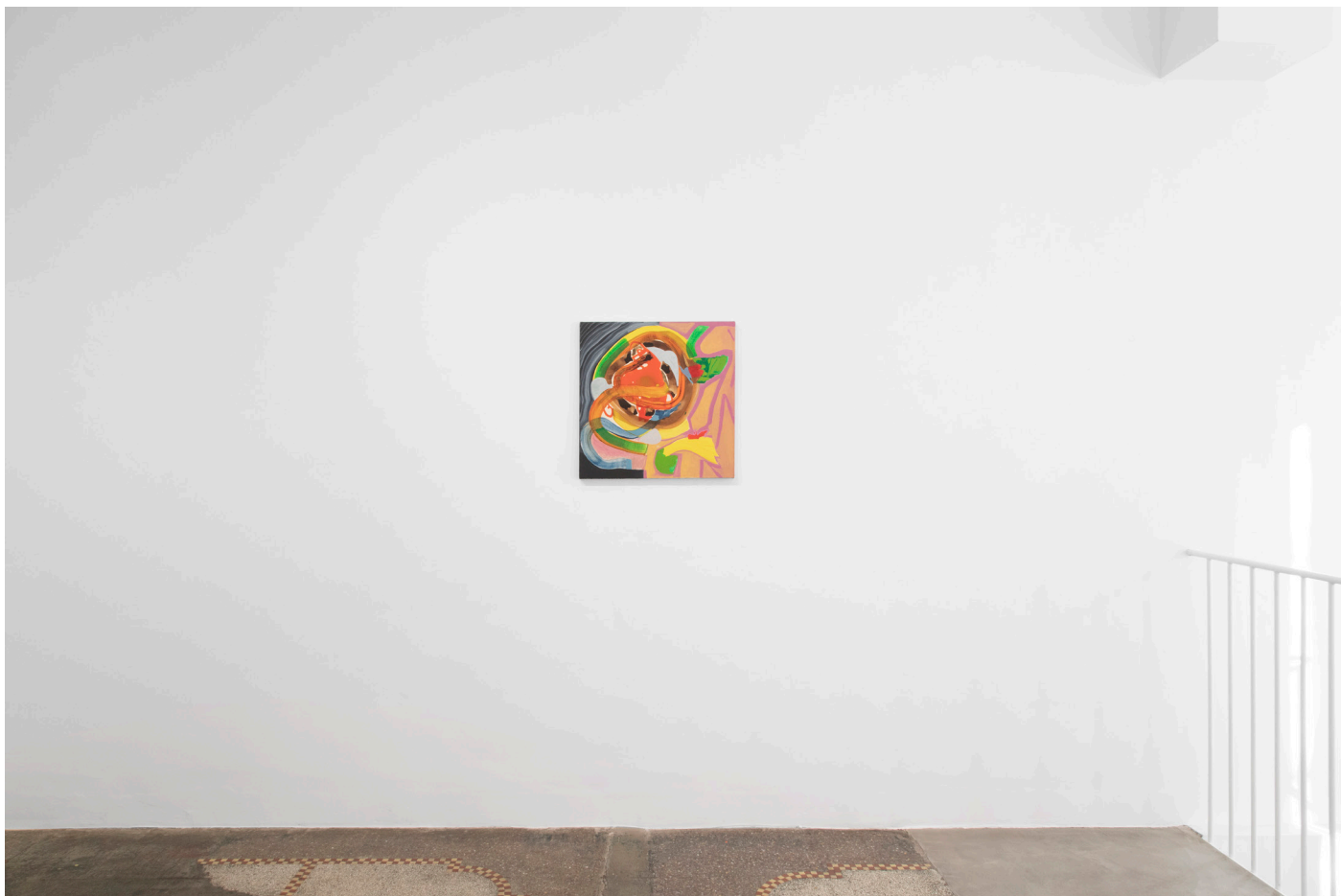


dépendance

4 rue du marché aux porcs  
1000 brussels  
t +32 2 217 74 00  
[www.dependance.be](http://www.dependance.be)  
[info@dependance.be](mailto:info@dependance.be)

**L'ÉVIDENCE ÉTERNELLE**

2022  
Installation view  
dépendance, Brussels



dépendance

4 rue du marché aux porcs  
1000 brussels  
t +32 2 217 74 00  
[www.dependance.be](http://www.dependance.be)  
[info@dependance.be](mailto:info@dependance.be)

**L'ÉVIDENCE ÉTERNELLE**

2022

Installation view  
dépendance, Brussels



dépendance

4 rue du marché aux porcs  
1000 brussels  
t +32 2 217 74 00  
[www.dependance.be](http://www.dependance.be)  
[info@dependance.be](mailto:info@dependance.be)

**L'ÉVIDENCE ÉTERNELLE**  
2022

Installation view  
dépendance, Brussels



dépendance

4 rue du marché aux porcs  
1000 brussels  
t +32 2 217 74 00  
[www.dependance.be](http://www.dependance.be)  
[info@dependance.be](mailto:info@dependance.be)

**L'ÉVIDENCE ÉTERNELLE**

2022  
Installation view  
dépendance, Brussels



dépendance

4 rue du marché aux porcs  
1000 brussels  
t +32 2 217 74 00  
[www.dependance.be](http://www.dependance.be)  
[info@dependance.be](mailto:info@dependance.be)

**L'ÉVIDENCE ÉTERNELLE**

2022  
Installation view  
dépendance, Brussels





dépendance

4 rue du marché aux porcs  
1000 brussels  
t +32 2 217 74 00  
[www.dependance.be](http://www.dependance.be)  
[info@dependance.be](mailto:info@dependance.be)

**L'ÉVIDENCE ÉTERNELLE**  
2022

Installation view  
dépendance, Brussels



dépendance

4 rue du marché aux porcs  
1000 brussels  
t +32 2 217 74 00  
[www.dépendance.be](http://www.dépendance.be)  
[info@dépendance.be](mailto:info@dépendance.be)

**L'ÉVIDENCE ÉTERNELLE**

2022

Installation view  
dépendance, Brussels





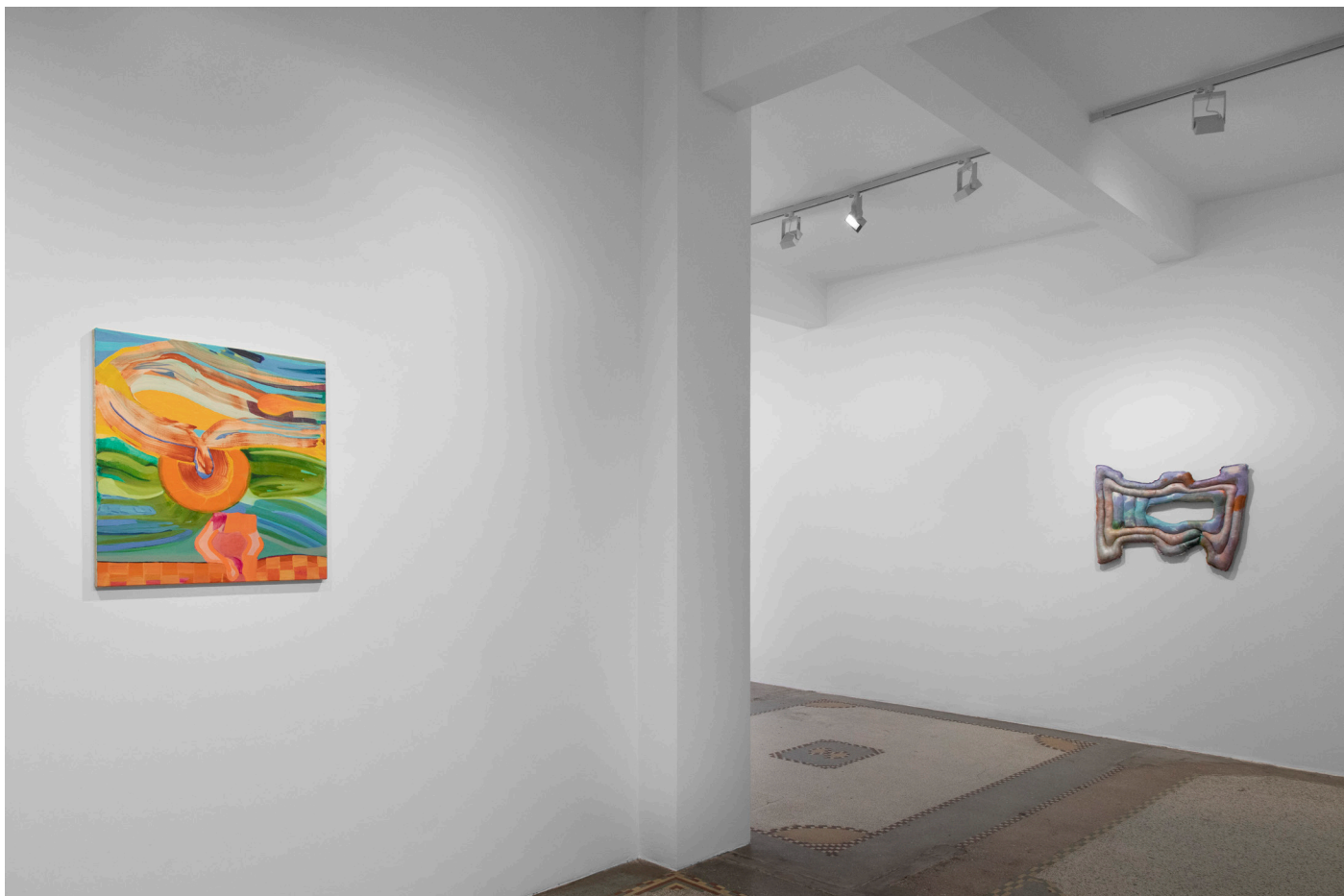
dépendance

4 rue du marché aux porcs  
1000 brussels  
t +32 2 217 74 00  
[www.dependance.be](http://www.dependance.be)  
[info@dependance.be](mailto:info@dependance.be)

**L' ÉVIDENCE ÉTERNELLE**

2022

Installation view  
dépendance, Brussels

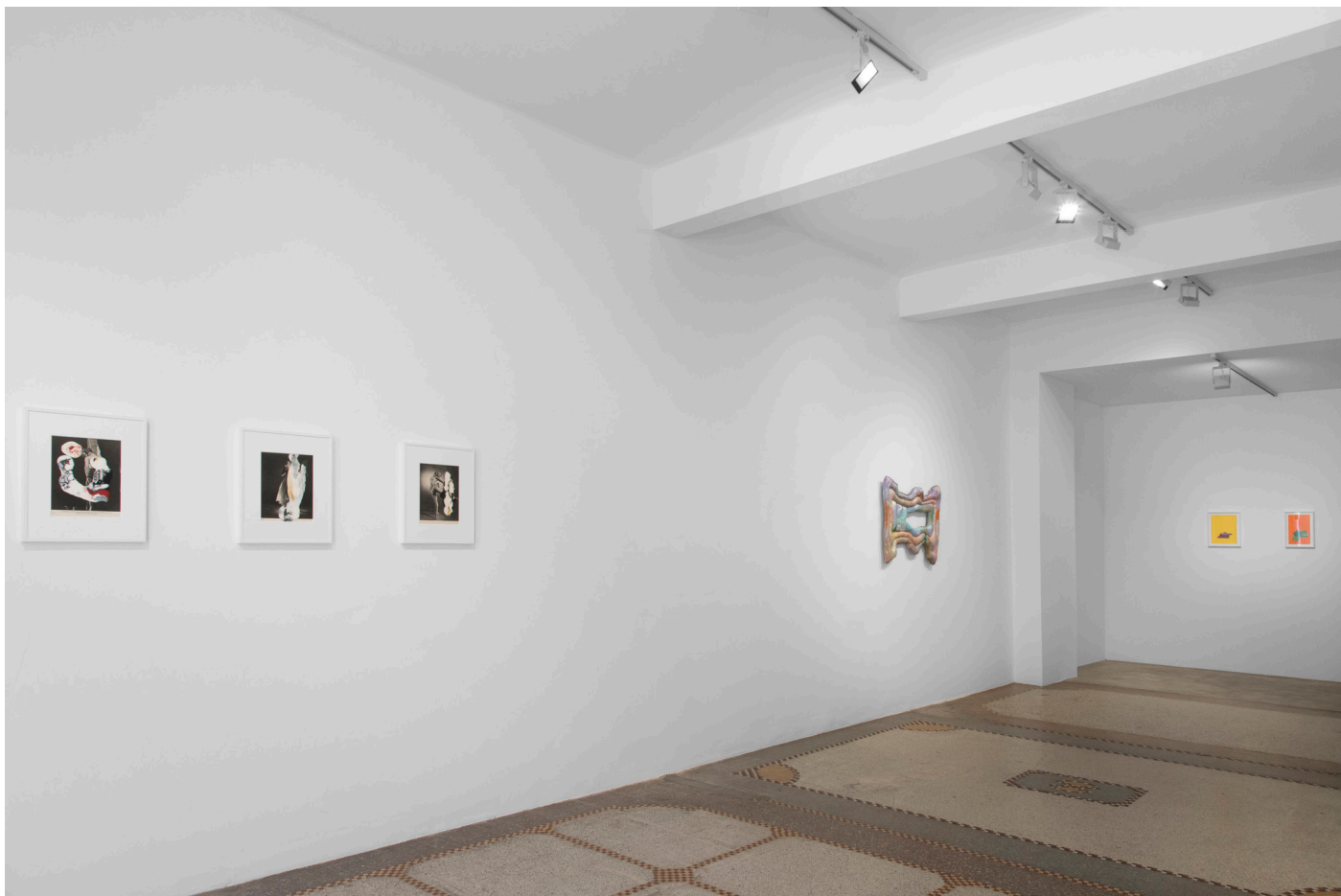


dépendance

4 rue du marché aux porcs  
1000 brussels  
t +32 2 217 74 00  
[www.dependance.be](http://www.dependance.be)  
[info@dependance.be](mailto:info@dependance.be)

**L'ÉVIDENCE ÉTERNELLE**  
2022

Installation view  
dépendance, Brussels



dépendance

4 rue du marché aux porcs  
1000 brussels  
t +32 2 217 74 00  
[www.dependance.be](http://www.dependance.be)  
[info@dependance.be](mailto:info@dependance.be)

**L'ÉVIDENCE ÉTERNELLE**  
2022

Installation view  
dépendance, Brussels



dépendance

4 rue du marché aux porcs  
1000 brussels  
t +32 2 217 74 00  
[www.dependance.be](http://www.dependance.be)  
[info@dependance.be](mailto:info@dependance.be)

**L'ÉVIDENCE ÉTERNELLE**

2022  
Installation view  
dépendance, Brussels



dépendance

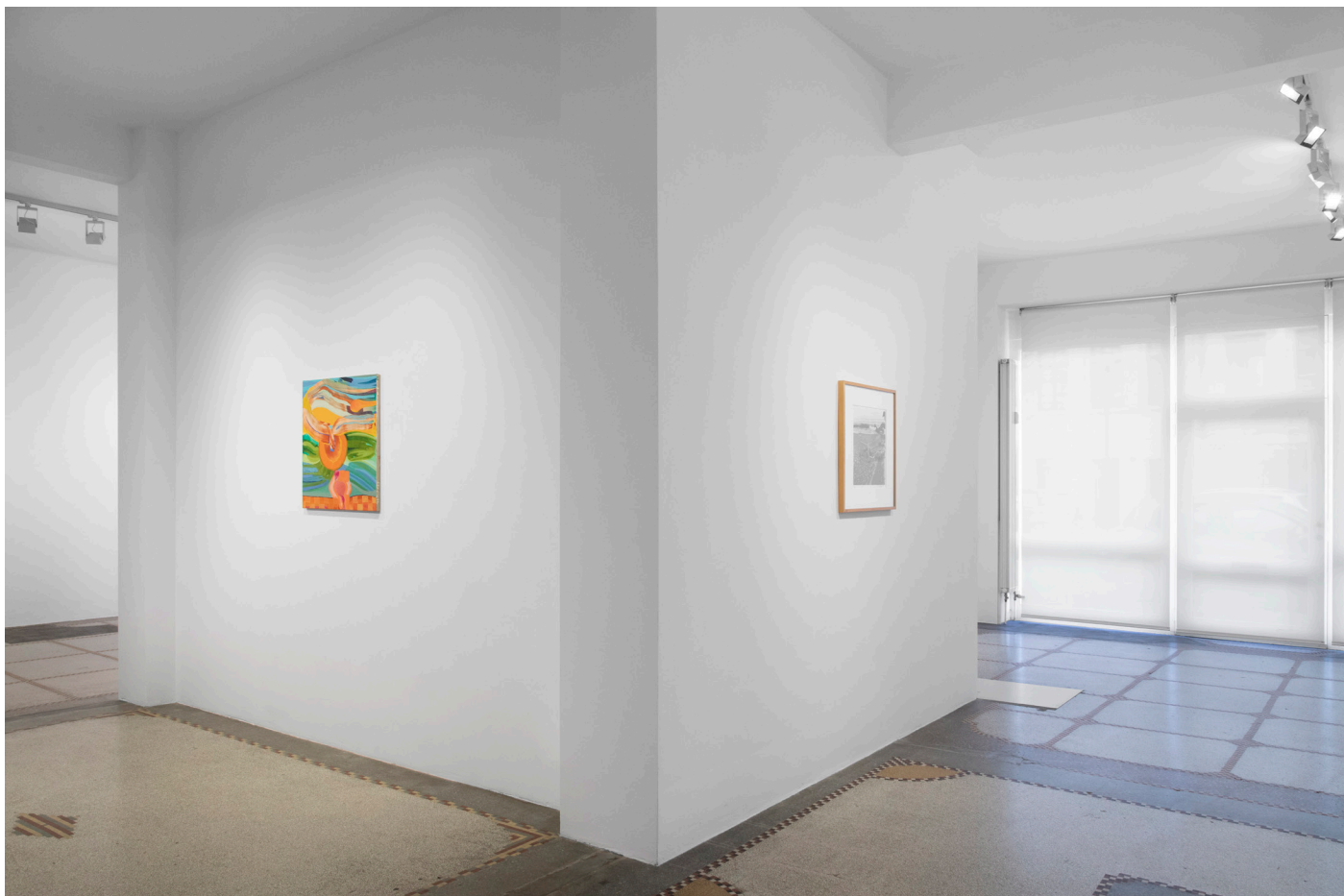
4 rue du marché aux porcs  
1000 brussels  
t +32 2 217 74 00  
[www.dependance.be](http://www.dependance.be)  
[info@dependance.be](mailto:info@dependance.be)

**L'ÉVIDENCE ÉTERNELLE**

2022

Installation view  
dépendance, Brussels





dépendance

4 rue du marché aux porcs  
1000 brussels  
t +32 2 217 74 00  
[www.dependance.be](http://www.dependance.be)  
[info@dependance.be](mailto:info@dependance.be)

**L' ÉVIDENCE ÉTERNELLE**  
2022

Installation view  
dépendance, Brussels



dépendance

4 rue du marché aux porcs  
1000 brussels  
t +32 2 217 74 00  
[www.dependance.be](http://www.dependance.be)  
[info@dependance.be](mailto:info@dependance.be)

**L'ÉVIDENCE ÉTERNELLE**  
2022

Installation view  
dépendance, Brussels



dépendance

4 rue du marché aux porcs  
1000 brussels  
t +32 2 217 74 00  
[www.dependance.be](http://www.dependance.be)  
[info@dependance.be](mailto:info@dependance.be)

**L'ÉVIDENCE ÉTERNELLE**

2022

Installation view  
dépendance, Brussels





dépendance

4 rue du marché aux porcs  
1000 brussels  
t +32 2 217 74 00  
www. dependance.be  
info@dependance.be

**Marley Freeman**  
**Fifth season**  
2021  
oil and acrylic on linen  
55.9 x 55.9 x 2.5 cm  
22 x 22 x 1 in  
DEP-MF-0001

HR Image:  
<https://www.dropbox.com/s/qk1in7kvsbpxrfz/DEP-MF-0001.tif?dl=0>





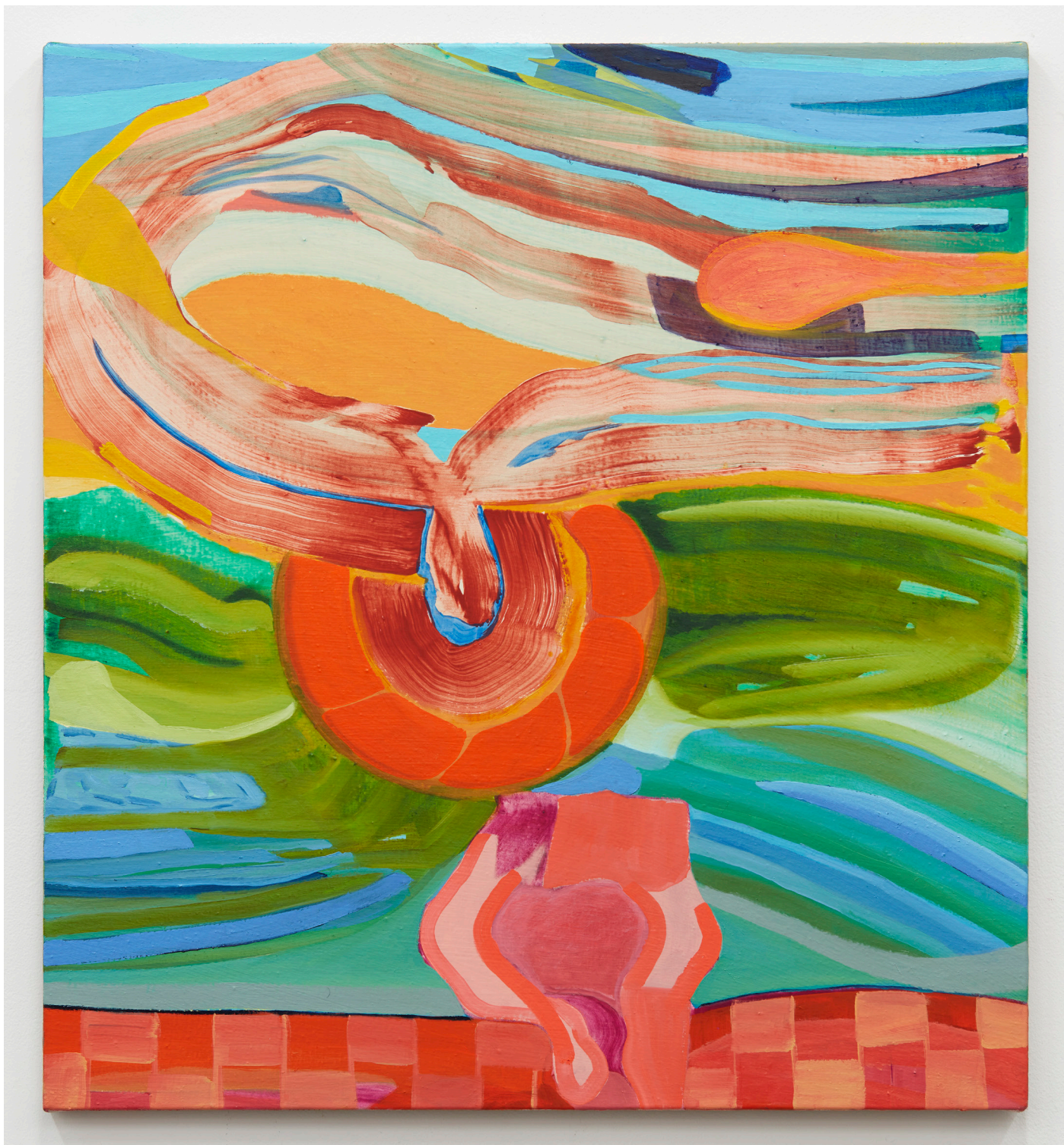
dépendance

4 rue du marché aux porcs  
1000 brussels  
t +32 2 217 74 00  
www. dependance.be  
info@dependance.be

**Marley Freeman**  
**Fifth season**  
2021  
oil and acrylic on linen  
55.9 x 55.9 x 2.5 cm  
22 x 22 x 1 in  
DEP-MF-0001

HR Image:  
<https://www.dropbox.com/s/qk1in7kvsbpxrfz/DEP-MF-0001.tif?dl=0>





dépendance

4 rue du marché aux porcs  
1000 brussels  
t +32 2 217 74 00  
www. dependance.be  
info@dependance.be

**Marley Freeman**  
**I'd love to have an Elephant in my garden**  
2021  
oil and acrylic on linen  
66 x 61 x 2.5 cm  
26 x 24 x 1 in  
DEP-MF-0002

HR Image:  
<https://www.dropbox.com/s/b05astu8yyp65dc/DEP-MF-0002.tif?dl=0>





dépendance

4 rue du marché aux porcs  
1000 brussels  
t +32 2 217 74 00  
www.dependance.be  
info@dependance.be

**Marley Freeman**  
**I'd love to have an Elephant in my garden**  
2021  
oil and acrylic on linen  
66 x 61 x 2.5 cm  
26 x 24 x 1 in  
DEP-MF-0002

HR Image:  
<https://www.dropbox.com/s/b05astu8yyp65dc/DEP-MF-0002.tif?dl=0>



dépendance

4 rue du marché aux porcs  
1000 brussels  
t +32 2 217 74 00  
www. dependance.be  
info@dependance.be

**Hans Breder**  
**Body sculpture (Iowa City, unknown hall)**  
1970  
vintage gelatine silver print  
19 x 19 cm  
7,48 x 7,48 in  
1 of 2 artist proofs, monogrammed, dated  
DEP-HB-0001

HR Image:

<https://www.dropbox.com/s/qk3la5o2ru3m2se/DEP-HB-0001.tif?dl=0>



dépendance

4 rue du marché aux porcs  
1000 brussels  
t +32 2 217 74 00  
www. dependance.be  
info@dependance.be

**Hans Breder**  
**Body sculpture (Iowa, Old man's creek)**  
1972  
vintage gelatine silver print  
19 x 19 cm  
7,48 x 7,48 in  
1 of 2 artist proofs, monogrammed, dated  
DEP-HB-0002

HR Image:

<https://www.dropbox.com/s/kcaiqfzblagknuy/DEP-HB-0002.tif?dl=0>





dépendance

4 rue du marché aux porcs  
1000 brussels  
t +32 2 217 74 00  
www. dependance.be  
info@dependance.be

**Hans Breder**  
**Body sculpture (Iowa City, atelier Breder)**  
1972  
vintage gelatine silver print  
19 x 19 cm  
7,48 x 7,48 in  
1 of 2 artist proofs, monogrammed, dated  
DEP-HB-0003

HR Image:

<https://www.dropbox.com/s/04us46cv71km17n/DEP-HB-0003.tif?dl=0>



dépendance

4 rue du marché aux porcs  
1000 brussels  
t +32 2 217 74 00  
www. dependance.be  
info@dependance.be

**Hans Breder**  
**Body sculpture (Cuilapan, Mexico)**  
1973  
vintage gelatine silver print  
19 x 19 cm  
7,48 x 7,48 in  
1 of 2 artist proofs, monogrammed, dated  
DEP-HB-0004

HR Image:

<https://www.dropbox.com/s/hvqke9sewapq411/DEP-HB-0004.tif?dl=0>





## dépendance

4 rue du marché aux porcs  
1000 brussels  
t +32 2 217 74 00  
www.dependance.be  
info@dependance.be

**Hans Breder**  
**La Ventosa, Ana Mendieta**  
1973  
vintage gelatine silver print  
35,6 x 35,6 cm  
14,02 x 14,02 in  
Ed. 2/8, monogrammed, dated on recto  
DEP-HB-0005

HR Image:

<https://www.dropbox.com/s/6kg0xxaioriwzlv/DEP-HB-0005.tif?dl=0>



dépendance

4 rue du marché aux porcs  
1000 brussels  
t +32 2 217 74 00  
www. dependance.be  
info@dependance.be

**Meg Lipke**  
**Body and Dream**

2021  
acrylic on muslin, silk and canvas with polyester fill  
154.94 x 53.34 x 10.16 cm  
61 x 21 x 4 in  
DEP-ML-0001

HR Image:

<https://www.dropbox.com/s/apwyyir4i9nbtnc/DEP-ML-0001.tif?dl=0>



dépendance

4 rue du marché aux porcs  
1000 brussels  
t +32 2 217 74 00  
www. dependance.be  
info@dependance.be

**Meg Lipke**  
**Body and Dream**

2021  
acrylic on muslin, silk and canvas with polyester fill  
154.94 x 53.34 x 10.16 cm  
61 x 21 x 4 in  
DEP-ML-0001

HR Image:

<https://www.dropbox.com/s/apwyyir4i9nbtnc/DEP-ML-0001.tif?dl=0>





dépendance

4 rue du marché aux porcs  
1000 brussels  
t +32 2 217 74 00  
www. dependance.be  
info@dependance.be

**Meg Lipke**  
**Pink Figure Frame**

2021  
acrylic on canvas with polyester fill  
81.28 x 68.58 x 7.62 cm  
32 x 27 x 3 in  
DEP-ML-0004

HR Image:

<https://www.dropbox.com/s/uxjnu67mfxi08mm/DEP-ML-0004.tif?dl=0>



dépendance

4 rue du marché aux porcs  
1000 brussels  
t +32 2 217 74 00  
www. dependance.be  
info@dependance.be

**Meg Lipke**  
**Pink Figure Frame**

2021  
acrylic on canvas with polyester fill  
81.28 x 68.58 x 7.62 cm  
32 x 27 x 3 in  
DEP-ML-0004

HR Image:

<https://www.dropbox.com/s/uxjnu67mfxi08mm/DEP-ML-0004.tif?dl=0>





dépendance

4 rue du marché aux porcs  
1000 brussels  
t +32 2 217 74 00  
www. dependance.be  
info@dependance.be

**Meg Lipke**  
**Dancing Inner Thing**

2020  
acrylic on canvas with polyester fill  
66 x 40,6 x 7,6 cm  
26 x 17 x 3 in  
DEP-ML-0003

HR Image:

<https://www.dropbox.com/s/oq1c34iz3v595gt/DEP-ML-0003.tif?dl=0>



dépendance

4 rue du marché aux porcs  
1000 brussels  
t +32 2 217 74 00  
www. dependance.be  
info@dependance.be

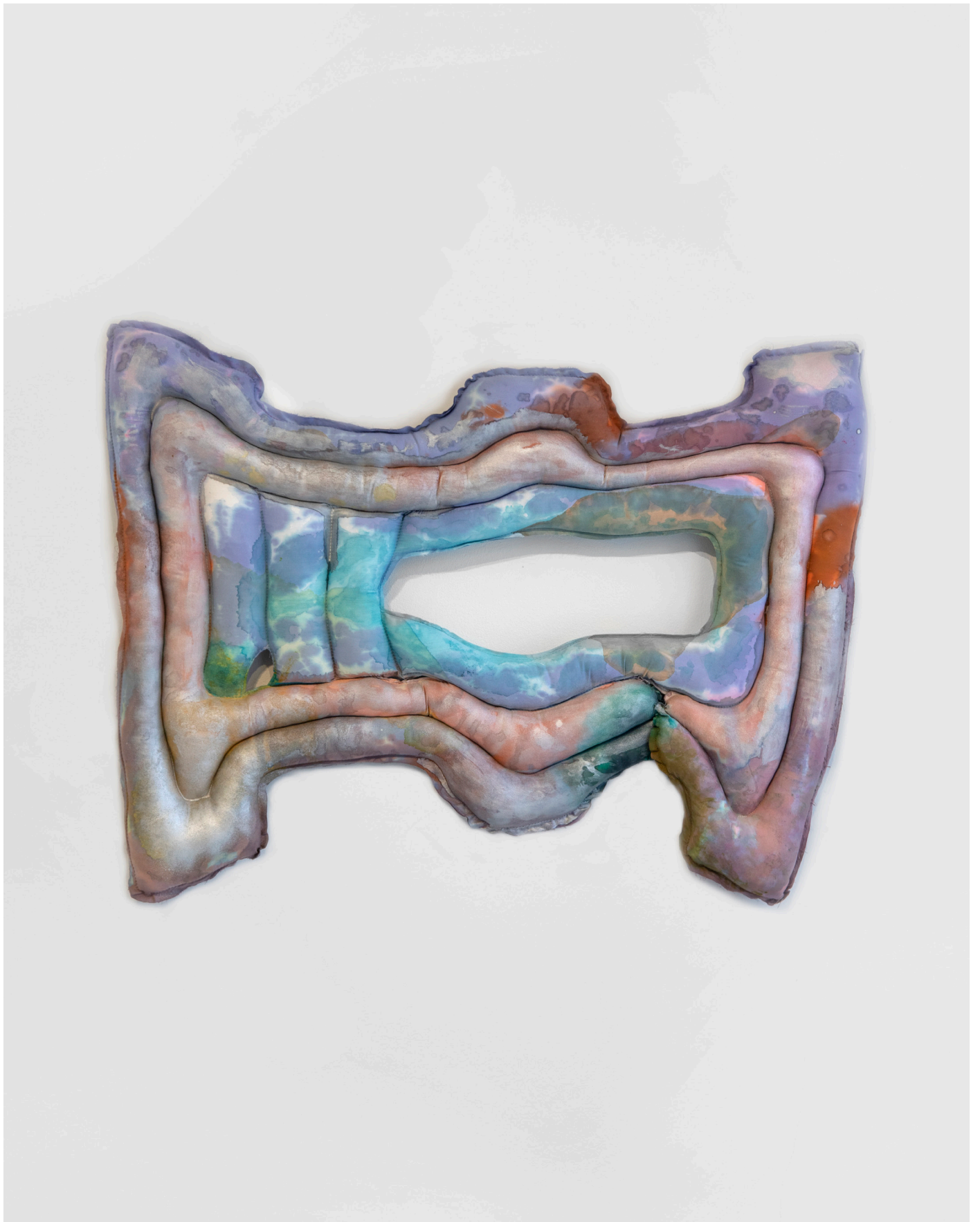
**Meg Lipke**  
**Dancing Inner Thing**

2020  
acrylic on canvas with polyester fill  
66 x 40,6 x 7,6 cm  
26 x 17 x 3 in  
DEP-ML-0003

HR Image:

<https://www.dropbox.com/s/oq1c34iz3v595gt/DEP-ML-0003.tif?dl=0>





dépendance

4 rue du marché aux porcs  
1000 brussels  
t +32 2 217 74 00  
www. dependance.be  
info@dependance.be

**Meg Lipke**  
**Blue Figure Frame**

2021  
acrylic on canvas with polyester fill  
68.58 x 86.36 x 7.62 cm  
27 x 34 x 3 in  
DEP-ML-0002

HR Image:

<https://www.dropbox.com/s/kwmwwb26cq7zy9n/DEP-ML-0002.tif?dl=0>





dépendance

4 rue du marché aux porcs  
1000 brussels  
t +32 2 217 74 00  
www. dependance.be  
info@dependance.be

**Meg Lipke**  
**Blue Figure Frame**

2021  
acrylic on canvas with polyester fill  
68.58 x 86.36 x 7.62 cm  
27 x 34 x 3 in  
DEP-ML-0002

HR Image:

<https://www.dropbox.com/s/kwmwwb26cq7zy9n/DEP-ML-0002.tif?dl=0>



dépendance

4 rue du marché aux porcs  
1000 brussels  
t +32 2 217 74 00  
www. dependance.be  
info@dependance.be

**Lili Dujourie  
Stilleven**

1976  
collage on paper, framed  
30.3 x 24 cm  
12 x 9.45 in  
unique  
DEP-LD-0001

HR Image:

<https://www.dropbox.com/s/zfo736zxuisuque/DEP-LD-0001.tif?dl=0>



dépendance

4 rue du marché aux porcs  
1000 brussels  
t +32 2 217 74 00  
www. dependance.be  
info@dependance.be

**Lili Dujourie  
Stilleven**

1976  
collage on paper, framed  
30.3 x 24 cm  
12 x 9.45 in  
unique  
DEP-LD-0002

HR Image:

<https://www.dropbox.com/s/lkieouze4azb8az/DEP-LD-0002.tif?dl=0>





## dépendance

4 rue du marché aux porcs  
1000 brussels  
t +32 2 217 74 00  
www. dependance.be  
info@dependance.be

### **Lili Dujourie** **Stilleven**

1976  
collage on paper, framed  
30.3 x 24 cm  
12 x 9.45 in  
unique  
DEP-LD-0003

HR Image:

<https://www.dropbox.com/s/ox06mcjuhp3uvtn/DEP-LD-0003.tif?dl=0>





dépendance

4 rue du marché aux porcs  
1000 brussels  
t +32 2 217 74 00  
www. dependance.be  
info@dependance.be

**Linder**  
**Superautomatism Grand Jeté IV**  
2015  
enamel on book page, framed  
45 x 37 cm (framed)  
17.7 x 14.56 in (framed)  
unique  
DEP-LS-0062

HR Image:

<https://www.dropbox.com/s/nkfugpt1uoftuow/DEP-LS-0062.tif?dl=0>



dépendance

4 rue du marché aux porcs  
1000 brussels  
t +32 2 217 74 00  
www. dependance.be  
info@dependance.be

**Linder**  
**Superautomatism Grand Jeté XI**  
2015  
enamel on book page, framed  
45 x 37 cm (framed)  
17.7 x 14.56 in (framed)  
unique  
DEP-LS-0069

HR Image:

<https://www.dropbox.com/s/orjckild6fvgoh0/DEP-LS-0069.tif?dl=0>



dépendance

4 rue du marché aux porcs  
1000 brussels  
t +32 2 217 74 00  
www. dependance.be  
info@dependance.be

**Linder**  
**Superautomatism Grand Jeté VI**  
2015  
enamel on book page, framed  
45 x 37 cm (framed)  
17.7 x 14.56 in (framed)  
unique  
DEP-LS-0072

HR Image:  
<https://www.dropbox.com/s/dpt6b5xltat4tllld/DEP-LS-0072.tif?dl=0>