

Kentaro Kawabata

Nonaka-Hill is pleased to present 凸凹 **Bumpy**, our second solo exhibition of Japanese porcelain artist Kentaro Kawabata.

Working in porcelain sculpture, Kentaro Kawabata creates forms ranging from grand scale to diminutive, sometimes graceful and exquisite, other times earthy and clumpy. He shows a side of porcelain that we rarely see, the rips, the tears and the cracks while at the same time, he gives what we might be looking for in this medium, details fine and delicate, attenuated curlicues and the tiniest little beads at placed at regular intervals; evidence of extreme artistic focus. On many works, the soft porcelain is crimped between thumb and forefinger, resulting in crenelated details while other details are achieved with the thumbs and forefingers of both hands working the porcelain in simultaneous, symmetrical motions. The artist achieves much of his color using pulverized or chipped stained glass which melts in the heat of the kiln and cascades in washes of brilliant color over the white porcelain. In *Soos* works, Kawabata accumulates discarded chunks of porcelain which, after the kiln, are coated with silver and dipped in the hot sulphurated waters of an onsen bath. The resulting matte iridescent finish is rich in color and fascinating in its alchemy. In many works, Kawabata paints his porcelain with silver which oxidizes over time to a browned color, resembling dry animal or human bones. The artist studs some works with metal slag which appear like peppercorns, gilds some details in platinum and hides delights in every crevice. His skill and his whimsy culminate in abstract sculptural works which are distinctly anthropomorphic of flora or fauna. The exhibition is on view through January 29, 2022.

KENTARO KAWABATA: Born 1976 in Saitama, Japan Lives and works in Gifu, Japan After graduating from the Tajimi City Pottery Design and Technical Center in 2000, Kawabata began winning awards for his work, including the Kamoda Shoji Award at the Mashiko Pottery Exhibition (2004) and the Paramita Museum Ceramic Award (2007). His work has been the subject of numerous solo and group exhibitions at highly-reputed ceramic institutions, including the National Museum of Modern Art's Crafts Gallery ("The Power of Decoration: A Viewpoint on Contemporary Kôgei (Studio Crafts)", 2009), the Ibaraki Ceramic Art Museum ("Phenomenon of Contemporary Ceramic", 2014), and the Museum of Modern Ceramic Art, Gifu (2004, 2010). 1998 Diploma, Tokyo Designer Institute, Ceramic Department, Tokyo 2000 B.F.A., Tajimi city Pottery Design and Technical Center Gifu, Japan



Kentaro Kawabata

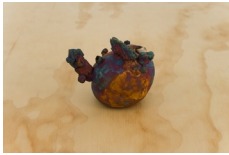
soos, 2021

Porcelain, sulfurized silver

4 1/2 x 20 x 6 in

11.4 x 50.8 x 15.2 cm

(KENKAW_2021_NHG2-23)



Kentaro Kawabata

soos, 2021

Porcelain, sulfurized silver

3 1/8 x 4 x 3 1/8 in

8 x 10.2 x 8 cm

(KENKAW_2021_NHG2-24)



Kentaro Kawabata

soos, 2021

Porcelain, sulfurized silver

9 3/4 x 7 1/8 x 4 3/4 in

24.8 x 18 x 12 cm

(KENKAW_2021_NHG2-25)



Kentaro Kawabata

mabataki, 2018

Porcelain

2 3/4 x 3 1/2 x 3 1/2 in

7 x 8.9 x 8.9 cm

(KENKAW_2021_NHG2-26)



Kentaro Kawabata

mabataki, 2018

Porcelain

2 3/4 x 4 x 4 in

7 x 10.2 x 10.2 cm

(KENKAW_2021_NHG2-27)



Kentaro Kawabata

spoon, 2021

Porcelain, glass, slag, platinum, silver.

17 1/4 x 6 x 5 1/4 in

43.8 x 15.2 x 13.5 cm

(KENKAW_2021_NHG2-25a)



Kentaro Kawabata

abandonment, 2021

Porcelain, glass, slag, platinum, silver.

7 5/8 x 11 1/8 x 7 1/2 in

19.5 x 28 x 19.1 cm

(KENKAW_2021_NHG2_28)



Kentaro Kawabata

Spoon, 2003

Porcelain, silver, slag

15 1/8 x 2 1/8 x 2 3/8 in

38.5 x 5.5 x 6 cm

(KENKAW_2003_NHG-01)



Kentaro Kawabata

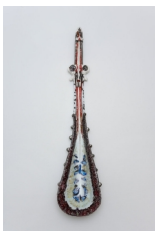
soos, 2021

Porcelain, sulfurized silver

15 1/2 x 5 7/8 x 5 7/8 in

39.5 x 15 x 15 cm

(KENKAW_2021_NHG2-22a)



Kentaro Kawabata

spoon, 2021

Porcelain, glass, slag, platinum, silver.

39 x 9 x 7 in

99.1 x 22.9 x 17.8 cm

(KENKAW_2021_NHG2-22)



Kentaro Kawabata

kaka, 2021

Porcelain

6 x 4 7/8 x 4 3/4 in

15.2 x 12.4 x 12 cm

(KENKAW_2021_NHG2-20)



Kentaro Kawabata

db, 2021

Porcelain

3 3/4 x 2 3/4 x 2 1/4 in

9.5 x 7 x 5.7 cm

(KENKAW_2021_NHG2-18)



Kentaro Kawabata

vukovich, 2015

Porcelain

6 1/4 x 9 1/8 x 1 3/4 in

15.9 x 23 x 4.5 cm

(KENKAW_2021_NHG2-19)



Kentaro Kawabata

soos, 2021

Porcelain, sulfurized silver

12 3/4 x 5 7/8 x 7 1/2 in

32.4 x 14.9 x 19 cm

(KENKAW_2021_NHG2-21)



Kentaro Kawabata

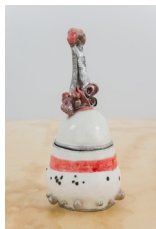
db, 2013

Porcelain

3 1/8 x 2 3/4 x 2 3/8 in

7.9 x 7 x 6 cm

(KENKAW_2021_NHG2-16)



Kentaro Kawabata

seed, 2021

Porcelain

7 1/4 x 3 3/8 x 3 1/2 in

18.5 x 8.5 x 8.9 cm

(KENKAW_2021_NHG2-13)



Kentaro Kawabata

loose, 2021

Porcelain

6 1/2 x 3 3/4 x 3 3/4 in

16.5 x 9.5 x 9.5 cm

(KENKAW_2021_NHG2-14)



Kentaro Kawabata

db, 2013

Porcelain

4 1/8 x 2 3/8 x 2 3/8 in

10.5 x 6 x 6 cm

(KENKAW_2021_NHG2-17)



Kentaro Kawabata

seed, 2020

Porcelain

6 3/4 x 3 1/2 x 3 in

17.1 x 8.9 x 7.5 cm

(KENKAW_2021_NHG2-15)



Kentaro Kawabata

kaka, 2012

Porcelain

16 1/2 x 3 3/8 x 3 1/2 in

42 x 8.5 x 9 cm

(KENKAW_2021_NHG2-11)



Kentaro Kawabata

spoon, 2021

Porcelain, glass, slag, platinum, silver.

18 5/8 x 5 5/8 x 5 1/2 in

47.3 x 14.2 x 14 cm

(KENKAW_2021_NHG2-10)



Kentaro Kawabata

calyx, 2021

Porcelain

24 x 15 x 10 1/2 in

61 x 38.1 x 26.7 cm

(KENKAW_2021_NHG2-08)



Kentaro Kawabata

soos, 2015

Porcelain, glass, sulfurized silver, platinum

16 3/4 x 5 1/2 x 5 1/2 in

42.5 x 14 x 14 cm

(KENKAW_2021_NHG2-12)



Kentaro Kawabata

soos, 2015

Porcelain, glass, sulfurized silver, platinum

16 3/8 x 12 x 6 1/2 in

41.6 x 30.5 x 16.5 cm

(KENKAW_2021_NHG2-09)



Kentaro Kawabata

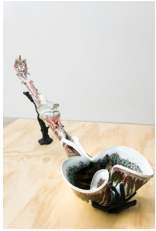
calyx, 2021

Porcelain

23 3/8 x 12 1/2 x 6 1/2 in

59.4 x 31.8 x 16.5 cm

(KENKAW_2021_NHG2-07)



Kentaro Kawabata

spoon, 2021

Porcelain, glass, slag, platinum, silver.

65 x 16 1/4 x 8 in

165.1 x 41.3 x 20.3 cm

(KENKAW_2021_NHG2-06)



Kentaro Kawabata

batista, 2021

Porcelain, glass, slag, feldspar.

14 3/4 x 26 x 14 1/2 in

37.5 x 66 x 36.8 cm

(KENKAW_2021_NHG2-03)



Kentaro Kawabata

spoon, 2021

Porcelain, glass, slag, platinum, silver.

61 x 20 x 13 in

154.9 x 50.8 x 33 cm

(KENKAW_2021_NHG2-05)



Kentaro Kawabata

batista, 2021

Porcelain, glass, slag, feldspar.

14 1/4 x 29 x 12 1/2 in

36.2 x 73.7 x 31.8 cm

(KENKAW_2021_NHG2-04)



Kentaro Kawabata

batista, 2021

Porcelain, glass, slag, feldspar.

17 1/8 x 29 1/2 x 17 1/2 in

43.5 x 74.9 x 44.5 cm

(KENKAW_2021_NHG2-01)



Kentaro Kawabata

batista, 2021

Porcelain, glass, slag, feldspar.

14 x 28 5/8 x 15 1/2 in

35.6 x 72.7 x 39.4 cm

(KENKAW_2021_NHG2-02)



Kentaro Kawabata

Seed, 2021

Glazed porcelain

5 3/4 x 4 x 2 3/8 in

14.5 x 10 x 5.9 cm

(KENKAW_2021_BA-06)



Kentaro Kawabata

budding tea bowl, 2016

Glazed porcelain, glass

3 3/8 x 5 3/4 x 5 1/2 in

8.5 x 14.5 x 14 cm

(KENKAW_2016_03)



Kentaro Kawabata

soos, 2015

Glazed porcelain, glass, platinum

5 1/4 x 9 1/2 x 9 7/8 in

13.5 x 24 x 25.1 cm

(KENKAW_2015_01)



Kentaro Kawabata

Soos Ne, 2015

Porcelain, sulfurized silver, platinum

11 3/8 x 7 1/8 x 6 5/8 in

28.9 x 18.2 x 16.8 cm

(KENKAW_2015_03)



Kentaro Kawabata

Seed, 2011

Glazed porcelain

4 3/4 x 4 7/8 x 4 1/8 in

12 x 12.5 x 10.5 cm

(KENKAW_2011_KK-C-11-04)



Kentaro Kawabata

Tower B, 2015

Glazed porcelain, glass, platinum

24 1/4 x 8 1/4 x 5 7/8 in

61.5 x 21 x 15 cm

(KENKAW_2015_04)



Kentaro Kawabata

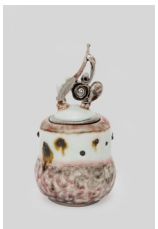
seed, 2021

Porcelain, glass, silver, platinum, slag

7 x 3 3/8 x 3 1/4 in

17.8 x 8.5 x 8.2 cm

(KENKAW_2021_NHG1-06)



Kentaro Kawabata

seed, 2021

Porcelain, silver, platinum, slag

5 1/8 x 2 3/4 x 2 3/4 in

13 x 7 x 7 cm

(KENKAW_2021_NHG1-07)



Kentaro Kawabata

kaka, 2012

Porcelain, glass, silver, platinum, slag

7 1/2 x 4 3/4 x 4 3/4 in

19 x 12 x 12 cm

(KENKAW_2021_NHG1-01)



Kentaro Kawabata

seed, 2021

Porcelain, silver, platinum, slag

4 3/8 x 4 1/8 x 4 1/8 in
11.2 x 10.5 x 10.5 cm
(KENKAW_2021_NHG1-02)



Kentaro Kawabata
seed, 2021
Porcelain, silver, platinum, slag
6 x 3 3/4 x 3 3/8 in
15.2 x 9.5 x 8.5 cm
(KENKAW_2021_NHG1-05)



Kentaro Kawabata
seed, 2021
Porcelain, glass, silver, platinum, slag
7 1/4 x 2 1/2 x 2 1/2 in
18.4 x 6.3 x 6.3 cm
(KENKAW_2021_NHG1-04)



Kentaro Kawabata
Abandonment, 2020
Porcelain, platinum, silver.
Paulownia wood "tomobako" box signed in ink, cotton, paper, cord.
7 1/2 x 8 1/4 x 6 1/4 in
19 x 21 x 16 cm
(KENKAW_2020_16)



Kentaro Kawabata
Knot Face 07, 2020
Porcelain, glass, slag, platinum, silver.
4 3/4 x 22 1/8 x 22 1/8 in
12 x 56 x 56 cm
(KENKAW_2020_14)



Kentaro Kawabata
Woman (Spoon), 2020
Porcelain, glass, slag, platinum, silver.
Paulownia wood "tomobako" box signed in ink, cotton, paper, cord.
16 1/8 x 9 1/2 x 5 1/8 in

41 x 24 x 13 cm

(KENKAW_2020_11)



Kentaro Kawabata

Abandonment, 2020

Porcelain, glass, slag, platinum, silver.

Paulownia wood "tomobako" box signed in ink, cotton, paper, cord.

5 7/8 x 9 1/2 x 7 1/8 in

15 x 24 x 18 cm

(KENKAW_2020_09)



Kentaro Kawabata

Undulating, 2020

Porcelain, glass, slag, platinum, silver.

Paulownia wood "tomobako" box signed in ink, cotton, paper, cord.

4 3/4 x 9 1/2 x 6 3/4 in

12 x 24 x 17 cm

(KENKAW_2020_06)



Kentaro Kawabata

Batista 1, 2020

Porcelain, glass, slag, feldspar.

13 x 29 7/8 x 15 3/4 in

33 x 76 x 40 cm

(KENKAW_2020_01)



Kentaro Kawabata

Bowl 3, 2018

Porcelain, glass, platinum

4 1/8 x 5 1/8 x 4 7/8 in

10.2 x 13 x 12.4 cm

Unique.

(KENKAW_2018_14)