

A DETACHED HAND | JUNE 28 – JULY 26, 2019

**Penny Slinger***The Safe Period*, 1969/2014

C-print from original collage

16h x 10.63w in

Framed: 22.50h x 17w x 1.50d in

Edition 1/3 + 2AP

**Elaine Cameron-Weir**

zone in which the shell material was essentially solid and an axial zone in which cup-shaped cavities remain in the camerae; with growth, the axial zone widens adorally at the expense of the peripheral zone, 2019

Stainless steel, aluminum, pewter, parachute silk, parachute harness clips and ripcord hardware, laboratory clamps, orthopedic jaw fixation hardware, leather, shells
79.50h x 24w x 8d in

**Bruce Nauman***Soft Ground Etching – Coral*, 2007

2-color etching

29.75h x 34w in

Framed: 33.50h x 36.50w x 1.50d in

Edition #9/50

**Bruce Nauman***Soft Ground Etching – Green*, 2007

2-color etching

29.75h x 34w in

Framed: 31.50h x 36.75w x 1.50d in

Edition #8/50



Bruce Nauman

Soft Ground Etching – Yellow, 2007

2-color etching

29.75h x 34w in

Framed: 32.50h x 36.75w x 1.50d in

Edition #8/50



Bruce Nauman

Soft Ground Etching – Rose, 2007

2-color etching

29.75h x 34w in

Framed: 32.50h x 36.75w x 1.50d in

Edition #8/50



Ebecho Muslimova

Fatebe Bottom First, 2019

Sumi ink and watercolor on paper

9h x 12w in

Framed: 15.75h x 12.75w x 1.50d in



Ebecho Muslimova

Fatebe Poop Act, 2019

Sumi ink on paper

9h x 12w in

Framed: 12.75h x 15.75w x 1.50d in



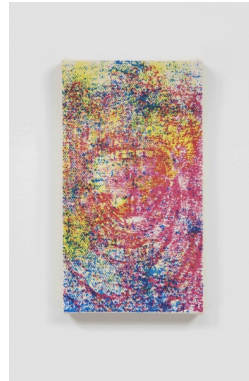
Ebecho Muslimova
Fatebe Untitled, 2019
 Sumi ink on paper
 9h x 12w in
 Framed: 15.75h x 12.75w x 1.50d in



Ebecho Muslimova
Fatebe Ball Toss, 2019
 Sumi ink on paper
 9h x 12w in
 Framed: 12.75h x 15.75w x 1.50d in



Nicolás Guagnini
The Bewitched Man, 2016
 Vitrified glazed ceramic, book (I, Goya, Dagmar Feghelm, Prestel [2004], ISBN: 3-7913-3071-3)
 17.01h x 13.50w x 9.76d in
 Plinth: 44h x 23.63w x 11.75d



Israel Lund
Untitled (Severed Information), 2018
 Acrylic on raw canvas
 10.75h x 6.13w in



Caitlin Keogh

Study for Hands (After Dante Gabriel Rossetti),
2019

Graphite and colored pencil on paper

16.54h x 11.81w in

Framed: 24.38h x 19.25w x 1.50d in



Hans Bellmer

Untitled, 1946

Graphite and white gouache on paper

5.50h x 3.63w in

Framed: 14h x 12.50w x 1.25d in



Cameron Clayborn

toolholder, 2017

Glitter, vinyl, steel

37.50h x 31w x 11d in



Christina Ramberg

Untitled, 1981

Graphite on paper

11h x 8.50w in

Framed: 15.75h x 12.75w x 1.50d in



Christina Ramberg

Untitled, 1983

Ink, graphite, and colored pencil on paper

11h x 8.50w in

Framed: 15.75h x 12.75w x 1.50d in



Narcissister

Mask Art Series (Profile with red braids and bows), 2015

Digital print

24h x 18w in

Framed: 24h x 18w in
1/4



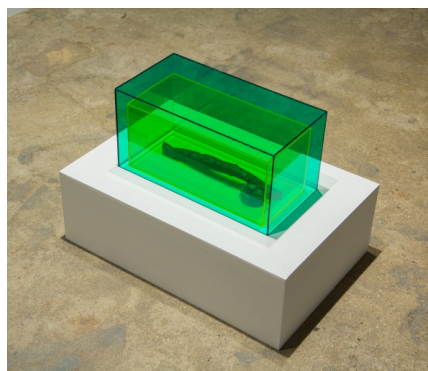
Hans Bellmer

Untitled, 1946

Vintage silver gelatin print

3.13h x 2.38w in

Framed: 14.13h x 11.63w in



Brook Hsu

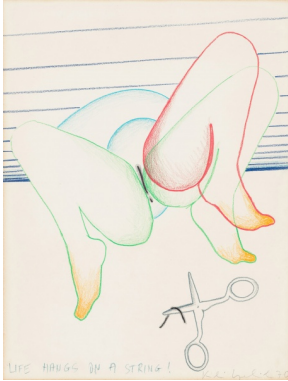
ear stick, 2014-2019

Bronze, urine, acrylic plexiglass

6h x 12w x 6d in

Plinth: 6h x 18w x 12d in

Edition 2 of 6



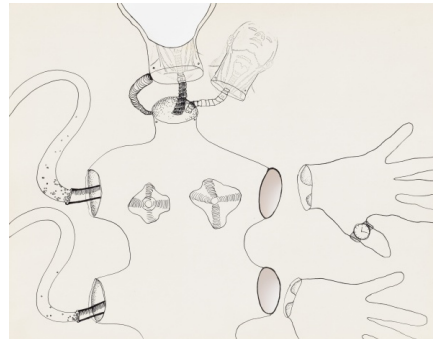
Kiki Kogelnik
Life Hangs on a String!, 1970
 Color pencil on paper
 14h x 10.63w in
 Framed: 16.69h x 13.66w x 1.50d in



Dan Herschlein
The Long Dumb Voice, 2017
 Wood, pigmented joint compound, paint, wax,
 graphite, grass, soil
 42h x 17w x 4d in



Kiki Kogelnik
Untitled (Robot), c. 1967
 Enamel and ink on paper
 25.75h x 19.75w in
 Framed: 30.25h x 24.25w x 1.50d in



Kiki Kogelnik
Untitled (Figure), c. 1965
 India ink and ink on paper
 16.50h x 20.94w in
 Framed: 21h x 25.50w x 1.50d in