

Works available by Alex Clarke  
3 March 2022



**Alex Clarke**

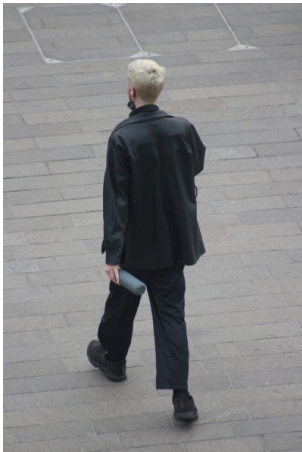
*Cruel Intentions, 2022*

Reverse glass painting, gesso and  
enamel on tempered glass

80 x 35.6 cm

31 1/2 x 14 in

(SDAC75)



**Alex Clarke**

*January 2022, 2022*

C-type print

45 x 30 cm

17 1/2 x 12 in

3 + 1AP

(SDAC85)



Alex Clarke

*January 2022, 2022*

C-type print

45 x 30 cm

17 1/2 x 12 in

3 + 1 AP

(SDAC86)



Alex Clarke

*January 2022, 2022*

C-type print

45 x 30 cm

17 1/2 x 12 in

3 + 1 AP

(SDAC87)



Alex Clarke

*January 2022, 2022*

C-type print

45 x 30 cm

17 1/2 x 12 in

3 + 1AP

(SDAC89)



Alex Clarke

*January 2022, 2022*

C-type print

45 x 30 cm

17 1/2 x 12 in

3 + 1AP

(SDAC90)



**Alex Clarke**

*Kissing Bench* (2017), 2022

(Floor)

Pine, gesso, clothing, vinyl, gouache,  
Bowls - plaster of Paris, ink and  
gouache.

83 x 82 x 41 cm

32 1/2 x 32 1/2 x 16 1/2 in

(SDAC83)



**Alex Clarke**

*Kissing Bench* (2017), 2022

(Wall)

Pine, gesso, clothing, "January  
2022", c-type print,  
Bowls - plaster of Paris, ink and  
gouache.

82.5 x 82.5 x 41.9 cm

32 1/2 x 32 1/2 x 16 1/2 in

(SDAC84)



**Alex Clarke**  
*Kissing Bench (Black)*, 2022  
 Pine, beech, ink and wax  
 85 x 51 x 100 cm  
 33 1/2 x 20 x 39 1/2 in  
 (SDAC73)



**Alex Clarke**  
*Kissing Bench (Pine)*, 2021  
 Pine, beech, mushroom, clothing,  
 "Kissing Bench Model", douglas fir,  
 beech  
 85 x 100 x 51 cm  
 33 1/2 x 39 1/2 x 20 in  
 (SDAC74)



**Alex Clarke**  
*Legibility*, 2022  
 Reverse glass painting, gouache and  
 enamel on tempered glass  
 80 x 35 cm  
 31 1/2 x 14 in  
 (SDAC76)



**Alex Clarke**

*March 2020, 2022*

C-type print

45 x 30 cm

17 1/2 x 12 in

3 + 1 AP

(SDAC88)



**Alex Clarke**

*Rain, 2022*

Reverse glass painting, enamel on  
tempered glass

60 x 40 cm

23 1/2 x 16 in

(SDAC77)



**Alex Clarke**

*Resting Boy, Andy Warhol, 1955-57 I,  
2022*

Reverse glass painting, gouache,  
mirror solution and enamel on glass

59.7 x 40.6 cm

23 1/2 x 16 in

(SDAC78)



**Alex Clarke**

*Resting Boy, Andy Warhol, 1955-57 II,*  
2022

Reverse glass painting, gouache,  
mirror solution and enamel on glass  
23 1/2 x 16 in  
60 x 40 cm  
(SDAC82)



**Alex Clarke**

*Snowballing (Excerpt),* 2022

Vinyl  
Variable dimensions  
(SDAC91)



**Alex Clarke**

*Window,* 2021

Watercolour and gesso on canvas  
61 x 41 cm  
24 1/2 x 16 1/2 in  
(SDAC81)

**super  
dakota**