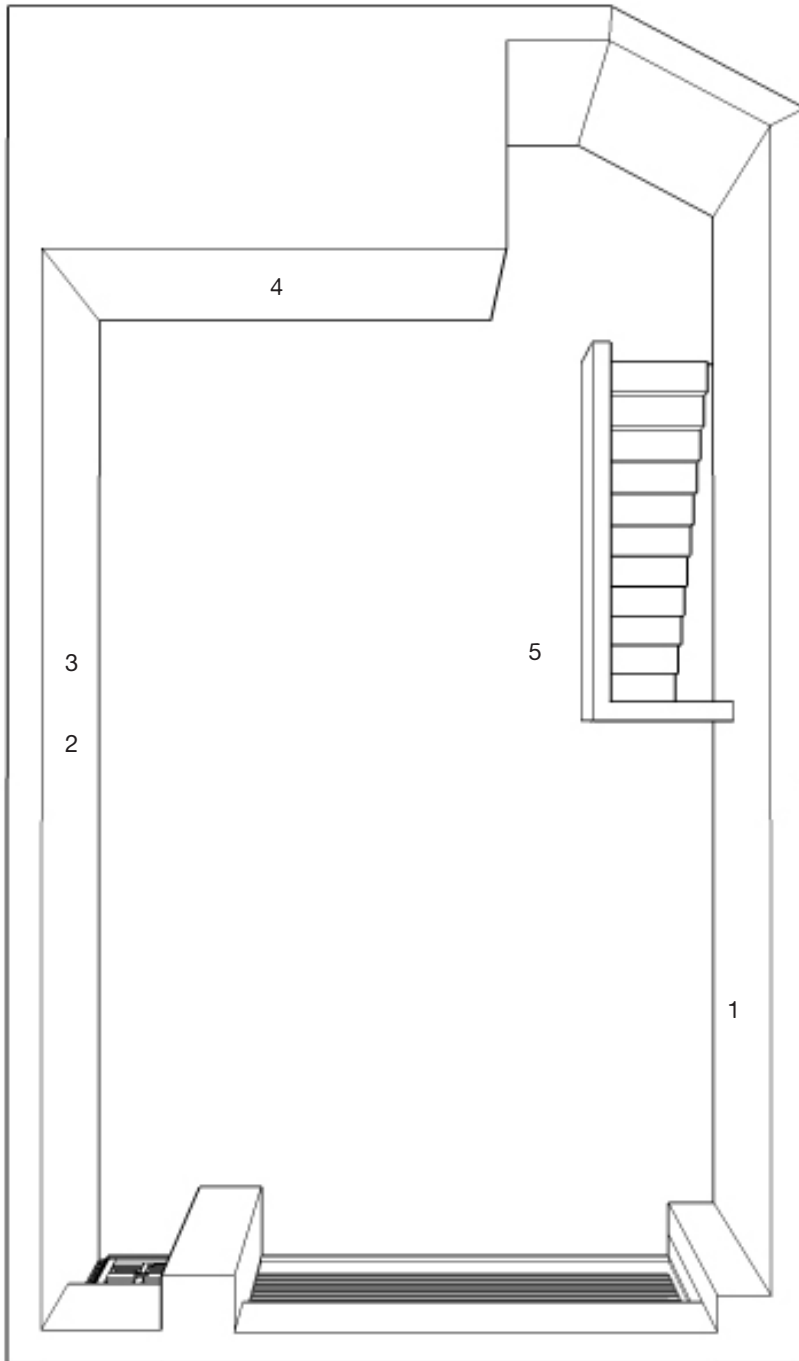


UNION PACIFIC
17 Goulston Street
London E1 7TP (UK)
+44 (0) **207 247 61 61**

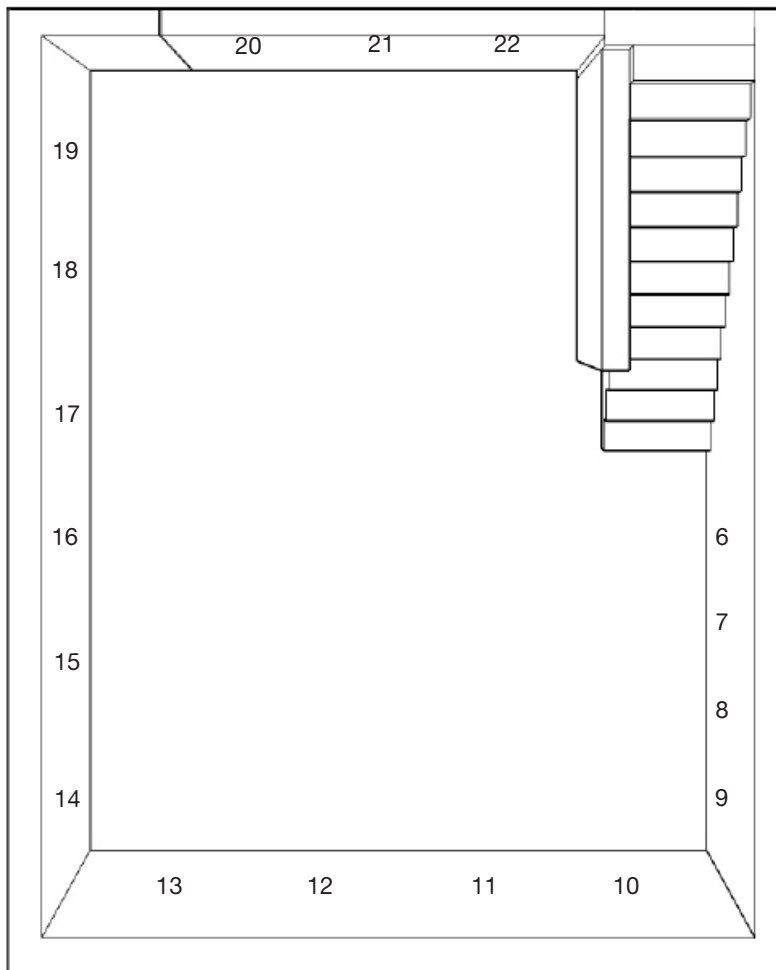
Gentle Stranger
18 February – 19 March, 2022

Martin Soto Climent



- 1 Story tale, 2020-22
Graphite and Acrylic transferred on linen mounted on masonite panel, framed with walnut wood
124 x 101 x 6cm
- 2 Night mirror - glossy night 1, 2021
Burnished charcoal and graphite on canvas
Mounted on plywood panel
40 x 25 x 6cm
- 3 Night mirror - glossy night 2, 2021
Burnished charcoal and graphite on canvas
Mounted on plywood panel
40 x 25 x 6cm
- 4 Tales from the heart, 2020-22
Graphite and Acrylic transferred on cotton canvas mounted on masonite panel, framed with walnut wood
124 x 117 x 6cm
- 5 Bureau (Note: Please wear gloves when handling the drawings)

Martin Soto Climent (b. 1977 in Mexico City, Mexico). Recent exhibitions include: The Phantom's Shadow, Karma International, Zurich, Phantograms, Michael Benevento, Los Angeles, Amatl, Andréhn-Schiptjenko, Paris, Gossip, Andréhn-Schiptjenko, Stockholm, The Skin of the Apple, Karma International, Zurich, In the Shadow of an Invisible Thread, Hessel Museum of Art, Annandale-on-Hudson, New York, Under the Immortal Skin, Galleria T293, Rome, Temazcal, Michael Benevento, Los Angeles, Retrospectiva, Lulu, Mexico City, Frenetic Gossamer, Palais de Tokyo, Paris.



17 Arriba o Abajo, 2021

Ink and color marker on paper

23 x 17cm / 9" x 6" 3/4

Book: Tratado de Astronomia Nautica p.p. 223

18 308 (Lips inside the kiss), 2014

Ink and color pencil on paper

32.8 x 22.4cm / 12" 15/16 x 8" 13/16

Book: Libro Contable p.p. 308

19 I tributi per i servizi del mercato, 2015 book used from 2013-21, Ink on paper

29.7 x 20.8cm / 1' 1/4" x 8" 3/16

Book: Lezioni Sulla Ispezione Sanitaria Industria e Commercio dei Prodotti della Pesca p.p. 95

20 La aliada, 2021

Ink, color pencil and color marker on paper

23 x 17cm / 9" x 6" 3/4

Book: Tratado de Astronomia Nautica p.p. 67

21 La ascension recta del Sol, la Luna o Planetas, 2021

Ink, color pencil and color marker on paper

23 x 17cm / 9" x 6" 3/4

Book: Tratado de Astronomia Nautica p.p. 123

22 L'Artisan independant, 2016-17

Ink and color pencil on paper

22.5 x 14cm / 5" 1/2 x 8" 7/8

Book: Théorie du Salarie et du Travail Salarie p.p. 30

6 L'Homarus vulgaris, 2020 book used from 2013-21, Ink and color pencil on paper
29.7 x 20.8cm / 1' 1/4" x 8" 3/16
Book: Lezioni Sulla Ispezione Sanitaria Industria e Commercio dei Prodotti della Pesca
p.p. 65

7 DEPRESION RESPIRATORIA, 2013-14
Ink on paper

23 x 16.5cm / 9" x 6" 1/2

Book: Anestesia Practica Moderna p.p. 180

8 SHOCK Y COLAPSO, 2013-14

Ink and color pencil on paper

23 x 16.5cm / 9" x 6" 1/2

Book: Anestesia Practica Moderna p.p. 182

9 Oloturie, 2019 book used from 2013-21

Ink and color pencil on paper

29.7 x 20.8cm / 1' 1/4" x 8" 3/16

Book: Lezioni Sulla Ispezione Sanitaria Industria e Commercio dei Prodotti della Pesca
p.p. 68

10 Ese disparo que o quién?, 2013

Ink, color pencil and watercolor on paper

19 x 12.5cm / 7" 7/8 x 4" 7/8

Book: La Penultima Verdasd
p.p. 151

11 Este es el contenido de la política de población, 2019-20

Ink, color pencil and color marker on paper

21 x 13.8cm / 8" 1/4 x 5" 1/2

Book: La Teoría Marxista Leninista de la Población p.p. 15

12 Moliere - l'homme, 2016

Ink on paper

19.6 x 12.5cm / 7" 11/16 x 4" 5/16

Book: Les Femmes Savantes p.p. 12

13 64 (Bubble lip), 2014

Ink and color pencil on paper

32.8 x 22.4cm / 12" 15/16 x 8" 13/16

Book: Libro Contable p.p. 64

14 pechosa de los mas terribles crímenes,

2018-19, Ink and color pencil on paper

18 x 11cm / 7" 1/6 x 4" 5/16

Book: La Piedra Lunar
p.p. 73

15 Los países en desarrollo confrontan grandes dificultades económicas, 2019-2020

Ink, color pencil and color marker on paper

21 x 13.8cm / 8" 1/4 x 5" 1/2

Book: La Teoría Marxista Leninista de la Población p.p. 7

16 Une marchandise dans le sens moderne,

2016-17, Ink and color pencil on paper

22.5 x 14cm / 5" 1/2 x 8" 7/8

Book: Théorie du Salarie et du Travail Salarie
p.p. 34