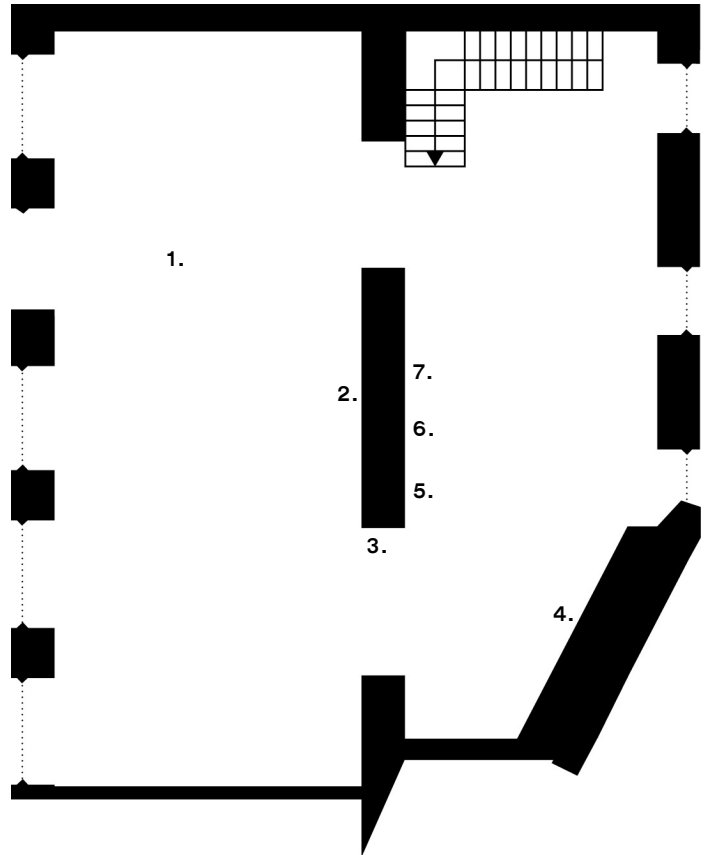


SOPHIE TAPPEINER

RINDON
JOHNSON AND
JORDAN
LOEPPKY-
KOLESNIK

Open the Gates!
Span the Mouth!

FLOOR PLAN



1. Rindon Johnson and Jordan Loeppky-Kolesnik
Vienna City Wall, 2022
Mosaic, marble, granite, grout
dimensions variable
(15,8 m x 1,21 m x 6 cm)

2. Jordan Loeppky-Kolesnik
Lock, 2022
Single channel 4k video,
colour 0'33" loop
Edition of 3 + 1 AP

3. Jordan Loeppky-Kolesnik
Reverse Arch & Amphora,
2022
Architectural modification,
drywall, wood
dimensions variable
(241 x 254 x 76 cm)

4. Rindon Johnson
*Mountain Whale (Not even the
birds are happy to see me)
Harbor, I'm round, I'm round
in one piece, doing a bottom, I
don't know if it hurt, the white
of an engine, a wall of rushing
water, your ankles on my*

*cheek bones, cake in the day,
and then at the half moon,
moby doll*, 2022
Leather, bleach, vinyl paint,
crayon, nails
122 x 226 cm

5. Jordan Loeppky-Kolesnik
Torch with Cold Blue Flame 1,
2022
Glass, modified hardware
76.2 x 33 x 3.8 cm

6. Jordan Loeppky-Kolesnik
Torch with Cold Blue Flame 2,
2022
Glass, modified hardware
76 x 15 x 4 cm

7. Jordan Loeppky-Kolesnik
Torch with Cold Blue Flame 3,
2022
Glass, modified hardware
66 x 40.6 x 3.8 cm

DOWNSTAIRS

8. Rindon Johnson
*I found a really nice place to
sit but you weren't there*, 2022
Ceramic and glaze
14 x 6.2 x 7 cm

9. Rindon Johnson
*At night expect a slight
chance of rain and snow with
temps in the same range*, 2022
Ceramic and glaze
10.5 x 6 x 15 cm

10. Rindon Johnson
*Immature and Impolite (put
your muscle behind it)*, 2022
Ceramic and glaze
12 x 5.5 x 13.5 cm

11. Rindon Johnson
*Salamanders, in compassion,
run at a far more measured
pace*, 2022
Ceramic and glaze
14.5 x 5 x 10.5 cm