

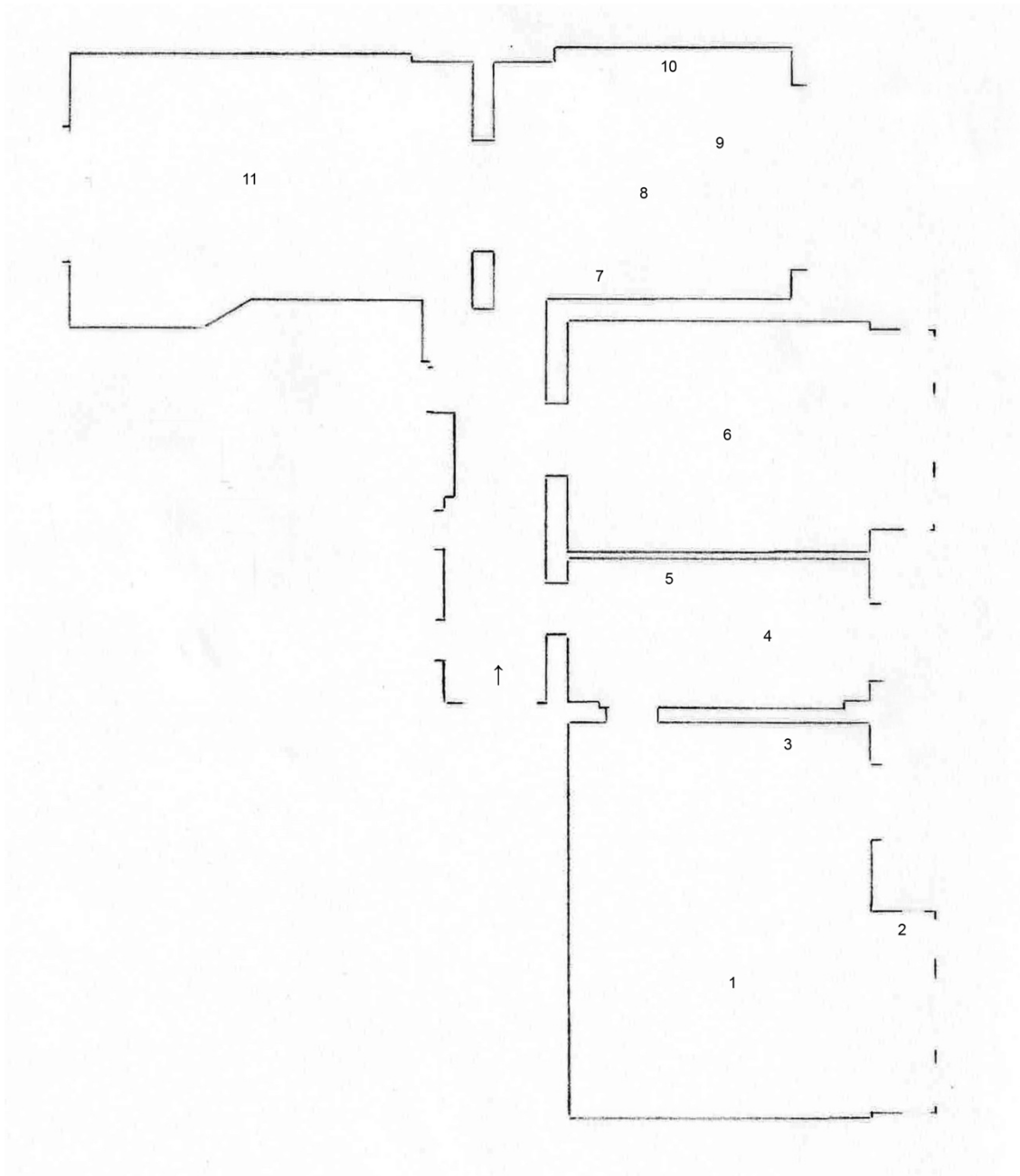
RL16

Sunah Choi

Studiolo

March 3 – May 1, 2022

Second Floor



Works details see reverse side!

RL16

1. *Studiolo I*, 2022

Paper, steel, painted glass, fruits, painted wood
Dimensions variable

2. *Rosa L.*, 2022

Painted glass
163 x 27 x 0,6 cm

3. *Vitres IV*, 2021

Painted glass, black-and-white photograms on paper
100 x 70 cm

4. *Tapeten Teppich (Grundriss-Collage)*, 2022

Laserjet print on DIN A4 paper, cyanotype on paper, glue
Dimensions variable

5. *Papiergitterjacke*, 2021/2022

Laserjet print on DIN A4 paper, cyanotype on paper, glue
Approx. 75 x 120 x 30 cm each

6. *Das Kabinett*, 2022

Steel, paper, wood, painted glass, spotlights
Dimensions variable

7. *Vitres III*, 2021

Painted glass, black-and-white photograms on paper
100 x 70 cm

8. *Behälter II*, 2022

Steel
40 x 40 x 190 cm

9. *Behälter I*, 2022

Steel
56 x 56 x 108 cm

10. *Fotogramme*, 2017–2018

From the series *Munjado*
Black-and-white photogram on baryt paper
18 x 24 cm each

11. *Studiolo II*, 2022

Paper, steel, painted glass, painted wood, cast, porcelain, diverse objects
Dimensions variable