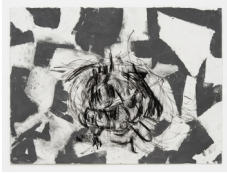


The approach



Pam Evelyn b. 1996
Buried, 2021
Charcoal and graphite on BFK Rives 280gsm paper
56 x 76 cm
22 1/16 x 29 29/32 in.
(AP-EVELP-00021)



Pam Evelyn b. 1996
Inverted Skyline, 2021
Charcoal and graphite on BFK Rives 280gsm paper
56 x 76 cm
22 1/16 x 29 29/32 in.
(AP-EVELP-00022)



Pam Evelyn b. 1996
City on paper, 2021
Charcoal and graphite on BFK Rives 280gsm paper
56 x 76 cm
22 1/16 x 29 29/32 in.
(AP-EVELP-00023)



Pam Evelyn
Addict, 2021
Ink and Gouache on Paper
84 x 60 cm
33 1/16 x 23 5/8 in.
(AP-EVELP-00043)



Pam Evelyn
Addiction, 2021
Ink and Gouache on Paper
84 x 60 cm
33 1/16 x 23 5/8 in.
(AP-EVELP-00044)



Pam Evelyn
Absence, 2021
Ink and Gouache on Paper
84 x 60 cm
33 1/16 x 23 5/8 in.
(AP-EVELP-00046)



Pam Evelyn
Tongue, 2021
Ink and Gouache on Paper
84 x 60 cm
33 1/16 x 23 5/8 in.
(AP-EVELP-00048)

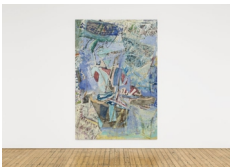
The approach



Pam Evelyn
Felt Behaved, 2021
Ink and Gouache on Paper
84 x 60 cm
33 1/16 x 23 5/8 in.
(AP-EVELP-00049)



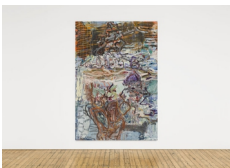
Pam Evelyn
Built on clay, 2022
Oil on linen
Diptych
Overall dimensions: 250 x 400cm / 98 7/16 x 157 1/2 in.
Each panel: 250 x 200 cm / 98 7/16 x 78 3/4 in.
(AP-EVELP-00057)



Pam Evelyn
Routine escape, 2022
Oil on linen
300 x 200 cm
118 1/8 x 78 3/4 in.
(AP-EVELP-00058)



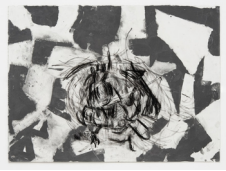
Pam Evelyn
Promised Land, 2022
Oil on linen
Triptych
Overall dimensions:
320 x 390cm / 126 x 153 9/16 in.
Left panel: 320 x 100 cm / 126 x 39 3/8 in.
Right panels (each): 160 x 290 cm / 63 x 114 3/16 in.
(AP-EVELP-00059)



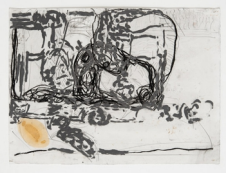
Pam Evelyn b. 1996
Sweet Smelling Smoke, 2022
Oil on linen
300 x 200 cm
118 1/8 x 78 3/4 in.
(AP-EVELP-00061)

Courtesy the artist and The Approach, London. Photographed by Michael Brzezinski.

The approach



Pam Evelyn b. 1996
Buried, 2021
Charcoal and graphite on BFK Rives 280gsm paper
56 x 76 cm
22 1/16 x 29 29/32 in.
(AP-EVELP-00021)



Pam Evelyn b. 1996
Inverted Skyline, 2021
Charcoal and graphite on BFK Rives 280gsm paper
56 x 76 cm
22 1/16 x 29 29/32 in.
(AP-EVELP-00022)



Pam Evelyn b. 1996
City on paper, 2021
Charcoal and graphite on BFK Rives 280gsm paper
56 x 76 cm
22 1/16 x 29 29/32 in.
(AP-EVELP-00023)



Pam Evelyn
Addict, 2021
Ink and Gouache on Paper
84 x 60 cm
33 1/16 x 23 5/8 in.
(AP-EVELP-00043)



Pam Evelyn
Addiction, 2021
Ink and Gouache on Paper
84 x 60 cm
33 1/16 x 23 5/8 in.
(AP-EVELP-00044)



Pam Evelyn
Absence, 2021
Ink and Gouache on Paper
84 x 60 cm
33 1/16 x 23 5/8 in.
(AP-EVELP-00046)



Pam Evelyn
Tongue, 2021
Ink and Gouache on Paper
84 x 60 cm
33 1/16 x 23 5/8 in.
(AP-EVELP-00048)

The approach



Pam Evelyn
Felt Behaved, 2021
Ink and Gouache on Paper
84 x 60 cm
33 1/16 x 23 5/8 in.
(AP-EVELP-00049)



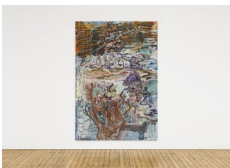
Pam Evelyn
Built on clay, 2022
Oil on linen
Diptych
Overall dimensions: 250 x 400cm / 98 7/16 x 157 1/2 in.
Each panel: 250 x 200 cm / 98 7/16 x 78 3/4 in.
(AP-EVELP-00057)



Pam Evelyn
Routine escape, 2022
Oil on linen
300 x 200 cm
118 1/8 x 78 3/4 in.
(AP-EVELP-00058)



Pam Evelyn
Promised Land, 2022
Oil on linen
Triptych
Overall dimensions:
320 x 390cm / 126 x 153 9/16 in.
Left panel: 320 x 100 cm / 126 x 39 3/8 in.
Right panels (each): 160 x 290 cm / 63 x 114 3/16 in.
(AP-EVELP-00059)



Pam Evelyn b. 1996
Sweet Smelling Smoke, 2022
Oil on linen
300 x 200 cm
118 1/8 x 78 3/4 in.
(AP-EVELP-00061)

Courtesy the artist and The Approach, London. Photographed by Michael Brzezinski.