

CLOSER

James Benning, Alejandro Cesarco, Steffani Jemison, Park McArthur &
Constantina Zavitsanos, Josiane M.H. Pozi, Tiffany Sia
February 12 to April 24, 2022



James Benning, *PLACE* (2020), installation view *CLOSER*, Kunstverein für die Rheinlande und Westfalen, Düsseldorf, 2022, photo: Cedric Mussano. [An installation view of a color film projection with three paintings on the wall to the right and a wooden table and chair on the opposite side.]



James Benning, *PLACE* (2020), installation view *CLOSER*, Kunstverein für die Rheinlande und Westfalen, Düsseldorf, 2022, photo: Cedric Mussano. [An installation view of a wooden table and chair facing a modular wall. The edge of a color film projection is visible on the right side.]



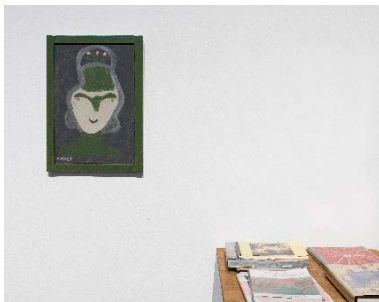
CLOSER, Kunstverein für die Rheinlande und Westfalen, Düsseldorf, 2022, installation view, photo: Cedric Mussano. [An installation view of a wooden table and chair facing a modular wall in the center. The edge of a color film projection is visible to their right. A second color film projection on another modular wall is visible in the background. In white text over blackish background the film still reads "SCORE FOR CONSENSUAL HEALING".]



James Benning, *PLACE* (2020), installation view *CLOSER*, Kunstverein für die Rheinlande und Westfalen, Düsseldorf, 2022, photo: Cedric Mussano. [An installation view of a wooden table and chair facing a wall in the background with seven paintings in a row. The edge of a color film projection and another wooden table and chair are visible on the left side.]



James Benning, *PLACE* (2020), installation view *CLOSER*, Kunstverein für die Rheinlande und Westfalen, Düsseldorf, 2022, photo: Cedric Mussano. [An installation view of a wooden table and chair facing a wall with seven paintings in a row.]



James Benning, *PLACE* (2020), installation view *CLOSER*, Kunstverein für die Rheinlande und Westfalen, Düsseldorf, 2022, photo: Cedric Mussano. [An installation view of a framed painting on a wall showing a portrait. The edge of a table with books is visible on the right.]



James Benning, *PLACE* (2020), installation view *CLOSER*, Kunstverein für die Rheinlande und Westfalen, Düsseldorf, 2022, photo: Cedric Mussano. [Image of a wooden chair and table with some books.]



James Benning, *PLACE* (2020), installation view *CLOSER*, Kunstverein für die Rheinlande und Westfalen, Düsseldorf, 2022, photo: Cedric Mussano. [An installation view of two framed paintings on a wall.]



James Benning, *PLACE* (2020), installation view *CLOSER*, Kunstverein für die Rheinlande und Westfalen, Düsseldorf, 2022, photo: Cedric Mussano. [An image of a framed painting showing two persons facing each other.]



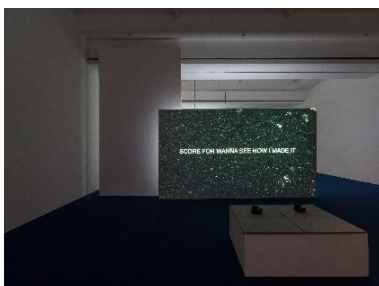
James Benning, *PLACE* (2020), installation view *CLOSER*, Kunstverein für die Rheinlande und Westfalen, Düsseldorf, 2022, photo: Cedric Mussano. [An image of a wooden chair and table with an open book.]



James Benning, *PLACE* (2020), installation view *CLOSER*, Kunstverein für die Rheinlande und Westfalen, Düsseldorf, 2022, photo: Cedric Mussano. [An installation view of a b/w US map installed on a modular wall. A wooden table and chair and seven paintings are visible in the background.]



James Benning, *PLACE* (2020), installation view *CLOSER*, Kunstverein für die Rheinlande und Westfalen, Düsseldorf, 2022, photo: Cedric Mussano. [An installation view of a b/w US map on slightly wrinkled paper. A painting is visible in the background.]

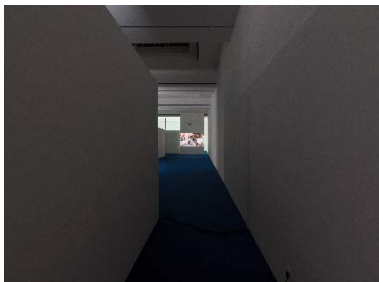


Park McArthur & Constantina Zavitsanos, *Scores for Carolyn* (2019), installation view *CLOSER*, Kunstverein für die Rheinlande und Westfalen, Düsseldorf, 2022, photo: Cedric Mussano. [An installation view of a color film projection on a modular wall is visible in the center. In white text over blackish

background the film still reads "SCORE FOR WANNA SEE HOW I MADE IT".
A seating with two headphones is visible in the foreground.]



CLOSER, Kunstverein für die Rheinlande und Westfalen, Düsseldorf, 2022, installation view, photo: Cedric Mussano. [An installation view of a color film projection on a modular wall is visible in the foreground. In white text over blackish-green background the film still reads "SORRY CANCER FOOLS." Another color film projection can be seen in the background.]



Alejandro Cesarco, *Mirrored Portrait* (2015), installation view *CLOSER*, Kunstverein für die Rheinlande und Westfalen, Düsseldorf, 2022, photo: Cedric Mussano. [An installation view of a film projection visible at the end of a narrow corridor built by a modular and a non-modular wall.]



CLOSER, Kunstverein für die Rheinlande und Westfalen, Düsseldorf, 2022, installation view, photo: Cedric Mussano. [An installation view with three color film projections on modular walls. In white text over blackish background the film still in the foreground reads "SCORE FROM THE MIDDLE."]



CLOSER, Kunstverein für die Rheinlande und Westfalen, Düsseldorf, 2022, installation view, photo: Cedric Mussano. [An installation view with two color film projections on modular walls. The one in the foreground shows a person performing a figure-of-eight-movement looking directly at the camera.]



Steffani Jemison, *Figure 8* (2021), installation view *CLOSER*, Kunstverein für die Rheinlande und Westfalen, Düsseldorf, 2022, photo: Cedric Mussano. [An installation view of a color film projection on a modular wall with two

speakers at the floor and a seating option in front. The film still shows a person performing a figure-of-eight-movement.]



Steffani Jemison, *Figure 8* (2021), installation view *CLOSER*, Kunstverein für die Rheinlande und Westfalen, Düsseldorf, 2022, photo: Cedric Mussano. [An installation view of the exhibition space with a color film projection on a modular wall with a seating option in front. The film still shows a person performing a figure-of-eight-movement.]



Josiane M.H. Pozi, *1* (2021), installation view *CLOSER*, Kunstverein für die Rheinlande und Westfalen, Düsseldorf, 2022, photo: Cedric Mussano. [An installation view with a color film projection on a modular wall with a seating option in front. The film still shows a person's head lying on a pillow.]



Josiane M.H. Pozi, *1* (2021), installation view *CLOSER*, Kunstverein für die Rheinlande und Westfalen, Düsseldorf, 2022, photo: Cedric Mussano. [An installation view of the exhibition space with a color film projection showing a person's head lying on a pillow. Two seating options are visible in the foreground.]



Josiane M.H. Pozi, *1* (2021), installation view *CLOSER*, Kunstverein für die Rheinlande und Westfalen, Düsseldorf, 2022, photo: Cedric Mussano. [An installation view of a color film projection on a modular wall showing a person's face from below. A seating option with two headphones is positioned in front of the projection.]



Josiane M.H. Pozi, *1* (2021), installation view *CLOSER*, Kunstverein für die Rheinlande und Westfalen, Düsseldorf, 2022, photo: Cedric Mussano. [An installation view of the exhibition space showing two modular white walls positioned at right angles to another. A color film projection is visible in the background.]



Alejandro Cesarco, *Mirrored Portrait* (2015), installation view *CLOSER*, Kunstverein für die Rheinlande und Westfalen, Düsseldorf, 2022, photo: Cedric Mussano. [An installation view of a color projection on a modular wall showing a person with a photo camera. The edge of another white modular wall is visible on the right.]



Alejandro Cesarco, *Mirrored Portrait* (2015), installation view *CLOSER*, Kunstverein für die Rheinlande und Westfalen, Düsseldorf, 2022, photo: Cedric Mussano. [An installation view of a color projection on a modular wall showing a person holding a photo camera in front of one eye, pointed directly forward. The edge of another white modular wall is visible on the right.]



CLOSER, Kunstverein für die Rheinlande und Westfalen, Düsseldorf, 2022, installation view, photo: Cedric Mussano. [An installation view of the exhibition space with two modular walls of which one functions as a projection screen. Two projectors are visible on the left side, one hanging from the ceiling, the other one is positioned on the floor.]



Tiffany Sia, *A Road Movie is Impossible in Hong Kong* (2021), installation view *CLOSER*, Kunstverein für die Rheinlande und Westfalen, Düsseldorf, 2022,

photo: Cedric Mussano. [An installation view of a seven-channel color video installation on a modular wall. Each video shows a different landscape. Seven projectors are installed in front of the wall, of which four are hanging from the ceiling and three are positioned on the floor.]



Tiffany Sia, *A Road Movie is Impossible in Hong Kong* (2021), installation view *CLOSER*, Kunstverein für die Rheinlande und Westfalen, Düsseldorf, 2022, photo: Cedric Mussano. [An installation view of a seven-channel color video installation on a modular wall. Each video shows a different landscape. Six projectors are visible in the foreground, of which four are hanging from the ceiling and two are positioned on the floor.]



Tiffany Sia, *A Road Movie is Impossible in Hong Kong* (2021), installation view *CLOSER*, Kunstverein für die Rheinlande und Westfalen, Düsseldorf, 2022, photo: Cedric Mussano. [An installation view of a seven-channel color video installation on a modular wall shot from the side view. Each video shows a different landscape. There are seven projectors facing the wall of which four are hanging from the ceiling and three are positioned on the floor.]



CLOSER, Kunstverein für die Rheinlande und Westfalen, Düsseldorf, 2022, installation view, photo: Cedric Mussano. [An installation view showing a shelf with various books mounted on a wall. Two cubes function as seating possibilities.]



CLOSER, Kunstverein für die Rheinlande und Westfalen, Düsseldorf, 2022, installation view, photo: Cedric Mussano. [An image showing a part of a shelf with three books.]



CLOSER, Kunstverein für die Rheinlande und Westfalen, Düsseldorf, 2022, installation view, photo: Cedric Mussano. [An image showing a part of a shelf with three books.]