

# **Leonor Antunes** **discrepancies** **28.04-03.07.22**

## **PRESS RELEASE**

### **Opening**

Wednesday, April 27  
16:00-20:00

### **Regular opening hours**

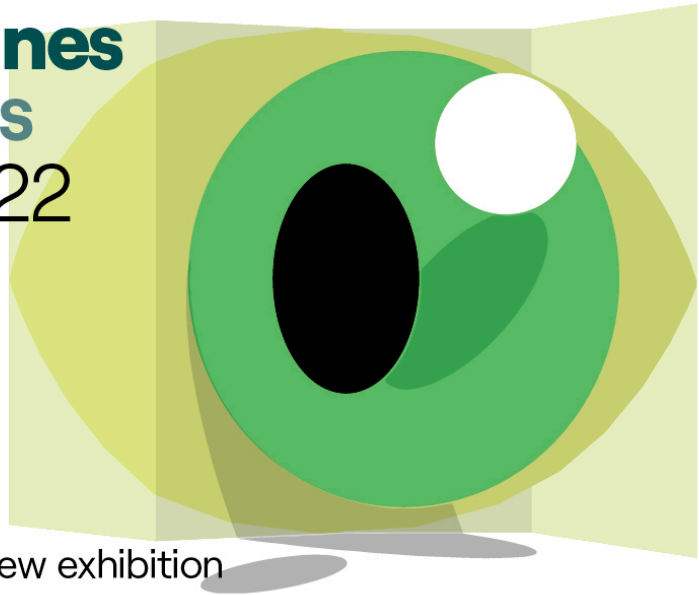
Thursday-Sunday  
13:00-18:00

### **Free entrance**

### **La Loge**

Kluisstraat 86 - rue de l'Ermitage  
B-1050 Brussels  
+32 (0)2 6444248  
[www.la-loge.be](http://www.la-loge.be)  
[info@la-loge.be](mailto:info@la-loge.be)

# Leonor Antunes discrepancies 28.04-03.07.22



la loge invites you to its new exhibition

The sculptural and spatial creations of Portuguese artist Leonor Antunes are the result of a subtle exchange between the context in which they are exhibited, a local know-how, and an embodied encounter with the works. Imbued with the legacy of modernist women architects and designers, her work also relates to the vernacular and resists the extreme rationalisation of creative processes. For her exhibition at La Loge, Antunes presents a new installation of light fixtures, questioning the objects' fragility as well as their functionality. The exhibition also acts as a starting point for Antunes' in-depth research project on Simone Guillissen-Hoa, one of Belgium's first female architects.

## About the artist

**Leonor Antunes** was born in 1972 in Lisbon. She lives and works currently in Berlin. Recent solo exhibitions have been shown at Villa André Bloc, Meudon (2021); Chapelle des Beaux-Arts de Paris (2021); THE BOX, Plymouth, United Kingdom (2020); MUDAM Luxemburg (2020); MASP, São Paulo Museum of Art, Brazil (2019); Museo Tamayo, Mexico City, Mexico (2018); Hangar Bicocca, Milan, Italy (2018); Whitechapel Gallery, London (2017); San Francisco Museum of Modern Art, California (2016); CAPC Bordeaux, France (2015); New Museum, New York (2015); Kunsthalle Basel, Switzerland (2013); and the Museo Reina Sofia, Madrid, Spain, (2011). Selected recent group shows include *Witch Hunt, Hammer Museum, Los Angeles* (2021); *Interiorities, Haus der Kunst, Munich* (2020); *And Berlin Will Always Need You. Art, Craft and Concept Made in Berlin. Gropius Bau, Berlin* (2019); *Resonating Spaces, Fondation Beyeler, Switzerland* (2019); *Civilized Caves, Ladera Oeste, Guadalajara, Mexico* (2017); *Condemned to be Modern, Los Angeles Municipal Art Gallery (LAMAG)* (2017). Antunes represented the Portuguese Pavilion at the Venice Biennale, Italy in 2019 and has participated in the 57th Venice Biennale (2017); the 12th Sharjah Biennial, UAE (2015); and the 8th Berlin Biennale (2014).

## **Public Programme**

### **Concert**

Sunday, June 12.  
14 :00

Music by Eliane Radigue  
Performed by Carol Robinson & Julia Eckhardt  
Duration: 90mn

### **Through the eyes**

Guided tour in the exhibition with a special guest  
Dates to be confirmed

Upon reservation via our website

## **Lab Loge**

### **Kids Programme**

An activity kit for children aged 6 to 12 will be available at the entrance of the exhibition. Complete the activities while you're at La Loge.

Free kit, in dutch, english and french

### **Summer workshop**

Details to be announced

## **Images and additional material**

[Download here](#)

For further information about the exhibition and programme, please contact  
[antoINETTE@la-loge.be](mailto:antoINETTE@la-loge.be)  
+32 (0)2 644 42 48

Visit [our website](#) for more details about our programme and events.

## Selected images



1. Jean-Pierre Hoa and Simone Guillissen-Hoa  
Lenzerheide (Switzerland)  
January 1957, Black and white image  
Courtesy and copyright Fonds Simone Guillissen-Hoa / Archives J.P. Hoa



2. Leonor Antunes, The BOX, Plymouth, March 20–August 29, 2020.  
Photo Nick Ash.  
Courtesy the artist and Air de Paris.



3. Leonor Antunes, A seam, a surface, a hing or a knot. Portugese Pavilion 2019 Venice Biennale, May 11 - November 2019.

Photo : Nick Ash.

Courtesy the artist and Air de Paris.



4. Leonor Antunes, *Egle #2*, 2019,  
Murano glass, brass, electric wire, bulb  
Dimensions variable  
128 x 17 1/2 x 4 1/8 in. (325 x 44.5 x 10.5 cm)  
Photo: Nick Ash  
Courtesy the artist and Marian Goodman Gallery

## About La Loge

La Loge is a Brussels-based space dedicated to contemporary art, architecture and theory that began its activities in 2012. Its aim is to develop a critical program that emerges from the connection to the reality it is embedded in. By inviting multivocal, heterogeneous perspectives, La Loge aims to gain a more nuanced understanding of cultural and societal issues. Architects, artists and cultural agents are invited to develop propositions in which they seek out the characteristic and the peculiar within their practices.

La Loge is a space where ideas, discussion and presentation coexist. La Loge's identity stems from the architectural gem that houses it, as well as from the commitment and concerns of its founders.

La Loge values engagement of thought and feels particularly interested in exploring questions of space, habitat and use. The intimate sphere of La Loge contributes to a context where conversations with its audience and the diversity of protagonists it invites can be initiated and sustained.

La Loge is a privately initiated non-profit association founded by architect Philippe Rotthier. La Loge is supported by Philippe Rotthier Foundation, the Flemish Government, the Flemish Community Commission (Vlaamse Gemeenschapscommissie - VGC) and First Sight, La Loge's community of engaged individuals and organizations. La Loge receives additional support from the Commune d'Ixelles and the French Community (FWB).

La Loge is a member of 50° nord Réseau transfrontalier d'art contemporain.



FONDATION PHILIPPE ROTTHIER  
POUR L'ARCHITECTURE



Flanders  
State of the Art



Ixelles  
Elsene



FÉDÉRATION  
WALLONIE-BRUXELLES

# la loge

