

CORVI-MORA 1A KEMPSFORD ROAD LONDON SE11 4NU
TELEPHONE 020 78409111 FACSIMILE 0207840 9112

Jennifer Packer

Treading Water



CORVI-MORA 1A KEMPSFORD ROAD LONDON SE11 4NU
TELEPHONE 020 78409111 FACSIMILE 0207840 9112



TWENTY2 LIMITED TRADING AS CORVI-MORA IS A LIMITED COMPANY INCORPORATED IN THE UNITED KINGDOM.
COMPANY REGISTRATION N°387 0439, VAT REGISTRATION N°744 29 38 15
REGISTERED OFFICE: 1A KEMPSFORD ROAD LONDON SE11 4NU UNITED KINGDOM

CORVI-MORA 1A KEMPSFORD ROAD LONDON SE11 4NU
TELEPHONE 020 78409111 FACSIMILE 0207840 9112



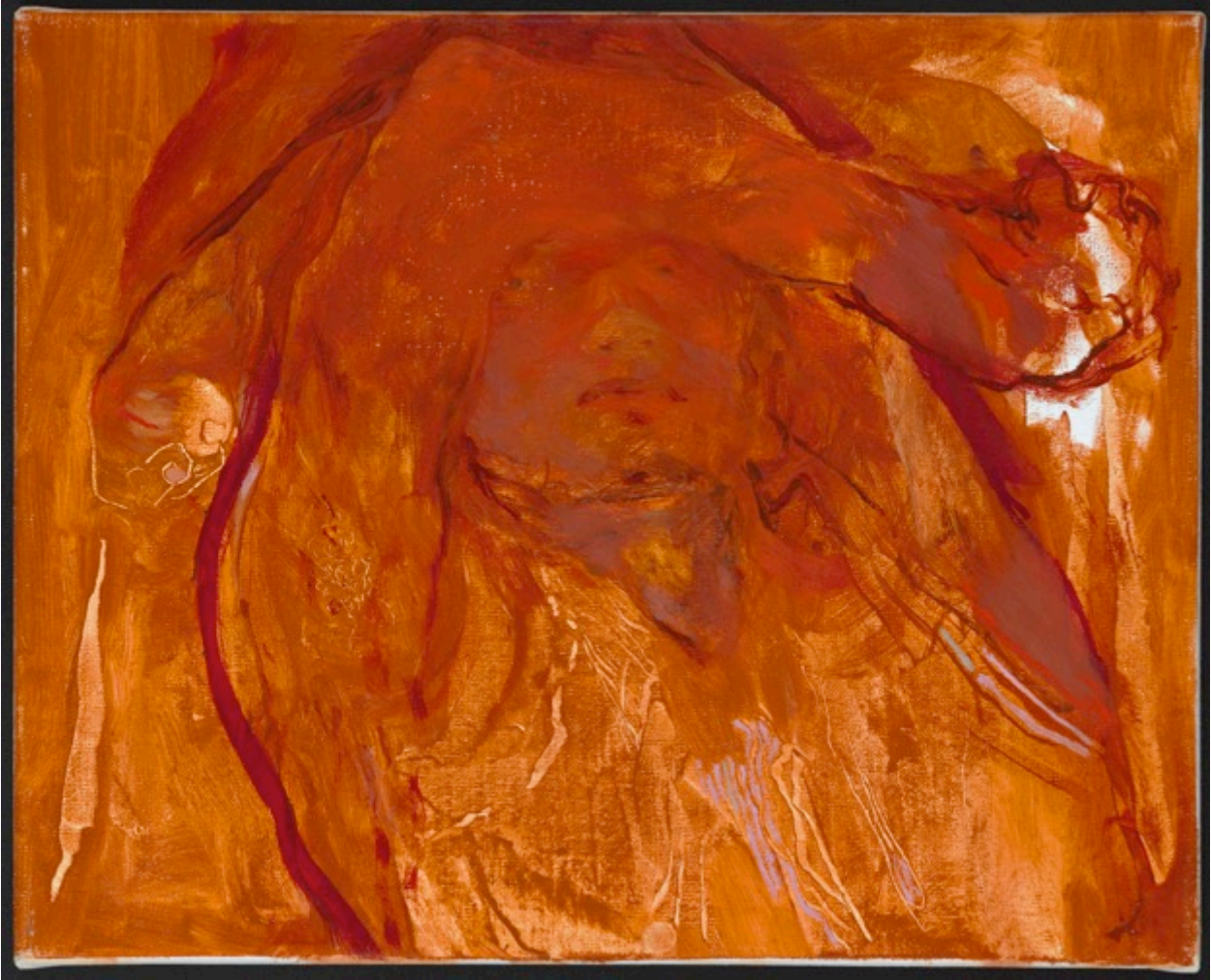
No Mind For Yearning, 2015
Oil on canvas
164.5 x 114.5 cm, 64.8 x 45.1 inches, JP15-9

CORVI-MORA 1A KEMPSFORD ROAD LONDON SE11 4NU
TELEPHONE 020 78409111 FACSIMILE 0207840 9112



Nonplussed, 2015
Oil on canvas
101.5 x 91.5 cm, 40 x 36 inches, JP15-8

CORVI-MORA 1A KEMPSFORD ROAD LONDON SE11 4NU
TELEPHONE 020 78409111 FACSIMILE 0207840 9112



Inclined Autonomy, 2015
Oil on linen
24 x 30 cm, 9.4 x 11.8 inches, JP15-6

CORVI-MORA 1A KEMPSFORD ROAD LONDON SE11 4NU
TELEPHONE 020 78409111 FACSIMILE 0207840 9112



Lime Roses, 2015
Oil on canvas on board
50.5 x 50 cm, 19.9 x 19.7 inches, JP15-5

CORVI-MORA 1A KEMPSFORD ROAD LONDON SE11 4NU
TELEPHONE 020 78409111 FACSIMILE 0207840 9112



Vision Impaired, 2015
Oil on canvas
107.5 x 137 cm, 42.3 x 53.9 inches, JP15-4

CORVI-MORA 1A KEMPSFORD ROAD LONDON SE11 4NU
TELEPHONE 020 78409111 FACSIMILE 0207840 9112



Untitled, 2015
Oil on canvas on board
51 x 53.5 cm, 20.1 x 21.1 inches, JP15-3

CORVI-MORA 1A KEMPSFORD ROAD LONDON SE11 4NU
TELEPHONE 020 78409111 FACSIMILE 0207840 9112



Alexandria, 2015
Oil on canvas
154.5 x 92 cm, 60.8 x 36.2 inches, JP15-1

CORVI-MORA 1A KEMPSFORD ROAD LONDON SE11 4NU
TELEPHONE 020 78409111 FACSIMILE 0207840 9112



Jordan, 2014
Oil on canvas
98 x 121.5 cm, 38.6 x 47.8 inches, JP14-3

CORVI-MORA 1A KEMPSFORD ROAD LONDON SE11 4NU
TELEPHONE 020 78409111 FACSIMILE 0207840 9112



Untitled, 2014
Oil on canvas on board
91 x 61 cm, 35.8 x 24 inches, JP14-1