

Soft Opening,

Captions and Courtesies
Rhea Dillon



Rhea Dillon

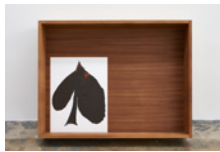
you rest on the lips of the, 2022

Sapele mahogany, oil stick and paper

95.2 × 125 × 23 cm (37 1/2 × 49 1/4 × 9 1/4 in)

Courtesy the artist and Soft Opening, London

Photography Theo Christelis



Rhea Dillon

you rest on the lips of the, 2022

Sapele mahogany, oil stick and paper

95.2 × 125 × 23 cm (37 1/2 × 49 1/4 × 9 1/4 in)

Courtesy the artist and Soft Opening, London

Photography Theo Christelis



Rhea Dillon

you rest on the lips of the (detail), 2022

Sapele mahogany, oil stick and paper

95.2 × 125 × 23 cm (37 1/2 × 49 1/4 × 9 1/4 in)

Courtesy the artist and Soft Opening, London

Photography Theo Christelis



Rhea Dillon

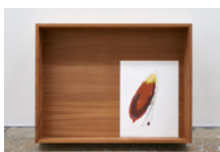
or, on being the pronounced dead., 2022

Sapele mahogany, oil stick and paper

95.2 × 125 × 23 cm (37 1/2 × 49 1/4 × 9 1/4 in)

Courtesy the artist and Soft Opening, London

Photography Theo Christelis



Rhea Dillon

or, on being the pronounced dead., 2022

Sapele mahogany, oil stick and paper

95.2 × 125 × 23 cm (37 1/2 × 49 1/4 × 9 1/4 in)

Courtesy the artist and Soft Opening, London

Photography Theo Christelis

Soft Opening,



Rhea Dillon

or, on being the pronounced dead., 2022

Sapele mahogany, oil stick and paper

95.2 × 125 × 23 cm (37 1/2 × 49 1/4 × 9 1/4 in)

Courtesy the artist and Soft Opening, London

Photography Theo Christelis



Rhea Dillon

Rimmed with saints who expire at the touch of the living's,
2022

Sapele mahogany, oil stick and paper

95.2 × 125 × 23 cm (37 1/2 × 49 1/4 × 9 1/4 in)

Courtesy the artist and Soft Opening, London

Photography Theo Christelis



Rhea Dillon

Rimmed with saints who expire at the touch of the living's,
2022

Sapele mahogany, oil stick and paper

95.2 × 125 × 23 cm (37 1/2 × 49 1/4 × 9 1/4 in)

Courtesy the artist and Soft Opening, London

Photography Theo Christelis



Rhea Dillon

Rimmed with saints who expire at the touch of the living's
(detail), 2022

Sapele mahogany, oil stick and paper

95.2 × 125 × 23 cm (37 1/2 × 49 1/4 × 9 1/4 in)

Courtesy the artist and Soft Opening, London

Photography Theo Christelis



Rhea Dillon

New Wor(l)d., 2022

Sapele mahogany, oil stick and paper

95.2 × 125 × 23 cm (37 1/2 × 49 1/4 × 9 1/4 in)

Courtesy the artist and Soft Opening, London

Photography Theo Christelis

Soft Opening,



Rhea Dillon

New Wor(l)d. (detail), 2022

Sapele mahogany, oil stick and paper

95.2 × 125 × 23 cm (37 1/2 × 49 1/4 × 9 1/4 in)

Courtesy the artist and Soft Opening, London

Photography Theo Christelis



Rhea Dillon

Heart Rock, Basket Case, 2022

Cut crystal, rock and wood

15.5 × 15.5 × 31 cm (6 1/4 × 6 1/4 × 12 1/4 in)

Courtesy the artist and Soft Opening, London

Photography Theo Christelis



Rhea Dillon

Heart Rock, Basket Case, 2022

Cut crystal, rock and wood

15.5 × 15.5 × 31 cm (6 1/4 × 6 1/4 × 12 1/4 in)

Courtesy the artist and Soft Opening, London

Photography Theo Christelis



Rhea Dillon

Heart Rock, Basket Case (detail), 2022

Cut crystal, rock and wood

15.5 × 15.5 × 31 cm (6 1/4 × 6 1/4 × 12 1/4 in)

Courtesy the artist and Soft Opening, London

Photography Theo Christelis



Rhea Dillon

A Caribbean Ossuary, 2022

Wooden cabinet and cut-crystal

42 × 208 × 161.5 cm (16 1/2 × 82 × 63 1/2 in)

Courtesy the artist and Soft Opening, London

Photography Theo Christelis

Soft Opening,



Rhea Dillon

A Caribbean Ossuary, 2022

Wooden cabinet and cut-crystal

42 x 208 x 161.5 cm (16 1/2 x 82 x 63 1/2 in)

Courtesy the artist and Soft Opening, London

Photography Theo Christelis



Rhea Dillon

A Caribbean Ossuary (detail), 2022

Wooden cabinet and cut-crystal

42 x 208 x 161.5 cm (16 1/2 x 82 x 63 1/2 in)

Courtesy the artist and Soft Opening, London

Photography Theo Christelis



Rhea Dillon

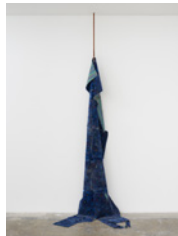
A Caribbean Ossuary (detail), 2022

Wooden cabinet and cut-crystal

42 x 208 x 161.5 cm (16 1/2 x 82 x 63 1/2 in)

Courtesy the artist and Soft Opening, London

Photography Theo Christelis



Rhea Dillon

Both Low Hanging Fruit And The Scavenged High Rise – Either Way: Suspension. So, Slackening The Hold Here I Ask Through The Poethics Of Suspense, 'How Can You Rest When Still Strung Up?', 2022

Sapele mahogany crosier, bus seat moquettes and thread

311 x 110 x 93 cm (122 1/2 x 43 1/4 x 36 1/2 in)

Courtesy the artist and Soft Opening, London

Photography Theo Christelis



Rhea Dillon

Both Low Hanging Fruit And The Scavenged High Rise – Either Way: Suspension. So, Slackening The Hold Here I Ask Through The Poethics Of Suspense, 'How Can You Rest When Still Strung Up?', 2022

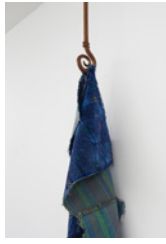
Sapele mahogany crosier, bus seat moquettes and thread

311 x 110 x 93 cm (122 1/2 x 43 1/4 x 36 1/2 in)

Courtesy the artist and Soft Opening, London

Photography Theo Christelis

Soft Opening,



Rhea Dillon

Both Low Hanging Fruit And The Scavenged High Rise – Either Way: Suspension. So, Slackening The Hold Here I Ask Through The Poethics Of Suspense, 'How Can You Rest When Still Strung Up?', 2022

Sapele mahogany crozier, bus seat moquettes and thread

311 x 110 x 93 cm (122 1/2 x 43 1/4 x 36 1/2 in)

Courtesy the artist and Soft Opening, London

Photography Theo Christelis



Rhea Dillon

Every Ginnal Is A Star, 2022

Plastic

193 x 193 x 10 cm (76 x 76 x 4 in)

Courtesy the artist and Soft Opening, London

Photography Theo Christelis



Rhea Dillon

Every Ginnal Is A Star (detail), 2022

Plastic

193 x 193 x 10 cm (76 x 76 x 4 in)

Courtesy the artist and Soft Opening, London

Photography Theo Christelis



Rhea Dillon

NEGR-OID, 2020 - 2022

Scent, metal and glass

31 x 15.5 x 15.5 cm (12 1/4 x 6 1/4 x 6 1/4 in)

Courtesy the artist and Soft Opening, London

Photography Theo Christelis