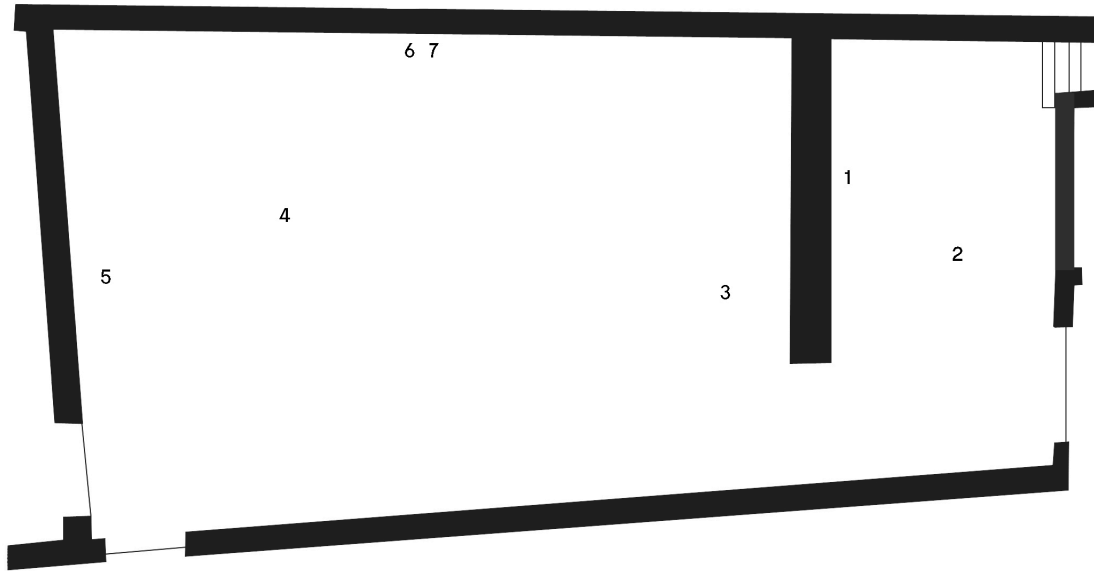


CORVI-MORA

Imran Qureshi

Tomoaki Suzuki

30.03.19 - 18.05.19



- 1. Tomoaki Suzuki**
Kerrin, 2018
Lime wood, acrylic paint, silver, perspex
25 x 25 x 4.4 cm, 9.8 x 9.8 x 1.7 inches
TS18-2
- 2. Tomoaki Suzuki**
Biole, 2019
Lime wood, acrylic paint, silver, glass, hard stone, swarovski glass, gold leaf
58 x 16 x 11.5 cm, 22.8 x 6.2 x 4.5 inches
TS19-1
- 3. Tomoaki Suzuki**
Kadeem and Kyrone, 2014
Lime wood, acrylic paint
55 x 11.5 x 14.5 cm and 55.6 x 10.5 x 17 cm
TS14-1
- 4. Imran Qureshi**
Midnight Garden, 2016
Acrylic on canvas
364.5 x 197.5 x 3.5 cm, 143.3 x 77.7 x 1.3 inches
IQ16-22
- 5. Imran Qureshi**
Red Soul, 2019
Gouache and gold leaf on Wasli paper
35.5 x 26.6 cm, 14 x 10.5 inches
IQ19-1
- 6. Imran Qureshi**
Red Soul, 2019
Gouache and gold leaf on Wasli paper
35.5 x 26.6 cm, 14 x 10.5 inches
IQ19-2
- 7. Imran Qureshi**
Red Soul, 2019
Gouache and gold leaf on Wasli paper
35.5 x 26.6 cm, 14 x 10.5 inches
IQ19-2

CORVI-MORA

4. **Tomoaki Suzuki**

Lucy, 2018

Lime wood, acrylic paint, pencil, silver

53.5 x 24 x 8.5 cm, 21 x 9.4 x 3.3

inches

TS18-1