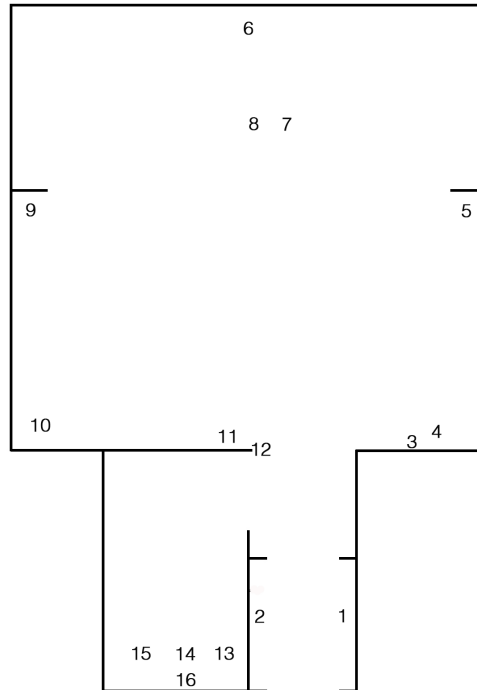




**Sabrina Röthlisberger Belkacem**  
**Poupée de sang**

May 19 - June 22, 2022



1 & 2

**Accrocher à mes la(r)mes de sang (petite)**, 2022  
ceramic, 20 x 30 cm

3 & 16

**Accrocher à mes la(r)mes de sang (petite)**, 2022  
ceramic, silver plated brass chain, 25 x 30 cm

4

**We're living a good life - Don't you fell?**, 2020  
oil on canvas, painted wood frame, 45 x 35 cm

5 & 9

**Accrocher à mes la(r)mes de sang (grande)**, 2022  
ceramic, silver plated brass chain, 55 x 16 cm

6

**Ces longues nuits où, j'enfile mes la(r)mes de sang à la toile accrochées** (tripych), 2022  
oil on canvas, silver, ceramic, silver plated brass chain, painted wood frame, 165 x 105 cm

7

**Clotho la menteuse**, 2020  
fabric, mixed media, 210 cm

10

**Lachésis la tricheuse**, 2020  
fabric, mixed media, 210 cm

11

**Accrocher à mes la(r)mes de sang (grande)**, 2022  
ceramic, silver plated brass chain, 75 x 10 cm

12

**Accrocher à mes la(r)mes de sang (grande)**, 2022  
ceramic, 55 x 16 cm

13 & 15

**L'ordre sacré (series of 13 ceramics)**, 2021  
ceramic, dimensions variable

14

**Santa Sangre**, 2021  
HD film, 35:00 min, colour/sound, edition of 3 + 2 A.P

8

**Atropos la voleuse**, 2020  
mixed media, fabric, 210 cm

**Sabrina Röthlisberger Belkacem** (b.1988) lives and works in Geneva.

Recent solo exhibitions include : *Sabbatum fever*, Kunsthalle Osnabrück (D); *I am Santa Sangre*, Wynx Club, Zurich; *Regarder sans être vu*, Urgent Paradise, Lausanne; *LE SANG*, Centre d'Art Contemporain, Geneva; *Once upon a time: a flat of one's own*, Alienze, Lausanne; *L'heure sacrée*, 186f Kepler, curated by Jeanne Graff, NY.

Recent group exhibitions include : *BIM'21, Biennale de l'Image en Mouvement*, Centre d'Art Contemporain de Genève, Geneva; *The many faces of god-ess*, Maison Populaire, Montreuil; *Teach yourself to fly*, Live in your Head, Head, Geneva; *En douce*, Gaudel de Stampa, Paris; Swiss Art Award, The Kiefer Hablitzel, Basel; *Exode*, The Oran Biennale, MAMO (DZ).