

MAMOTH

---

# Randy Wray

## *Particulars*

JUNE 8-JULY 23, 2022



---

3 Endsleigh Street, London, WC1H 0DS  
[www.mamoth.co.uk](http://www.mamoth.co.uk) | [contact@mamothcontemporary.com](mailto:contact@mamothcontemporary.com)



MAMOTH

---

# Randy Wray

## *Particulars*

JUNE 8-JULY 23, 2022

MAMOTH is thrilled to present *Particulars*, American artist Randy Wray's inaugural solo show at the gallery and his first in the UK to date.

Randy Wray's paintings resist any circumscribing definitions. While they reveal an attraction to natural forms, and wander through an expanse of gesture that charts its path through biological, ecological, and archaeological memories, they always step back from the edge of interpretation; delaying our ability to understand them right as they get to the border. At times they appear like glowing fossils, unfamiliar but tinged with gothic undertones, and echo something plangent; particularly when Wray seems to be citing radiographical shapes and MRI scans. But importantly, the shapes he creates have a slow rhythm, a speed encoded in the brushwork, that makes them undulate and pulsate with life. Each shape keeps its boundary, its membrane, while keeping the spaces in between them active with the possibility of transmission. It is Wray's series of about-turns, his decision-making process of not-this, that creates blooms of energy from their enchanting none-of-the-above.

While forming delays in graspable meaning, they also form connections to Wols and early tachisme, while extending into graphic color through their seductive facture and

# MAMOTH

---

memory-like surfaces. Flickers of the dense surfaces of Odilon Redon or Albert Pinkham Ryder find themselves tethered to the formal and psychic explorations of Graham Sutherland. It is Wray's shadows that do the heavy lifting, the shapes that feel like they've never known light, that allow for the vibrant charges of Cadmium Orange or Bismuth Yellow to glow and burn like sulphur in ways that haunt us. They sear their way into our mind's eye to store themselves in the same places that we keep sunsets, flashes of intense color and light, and awe.



# MAMOTH

---

*Vasque, 2022*

132 x 96.5cm (52 x 38in)  
oil on linen



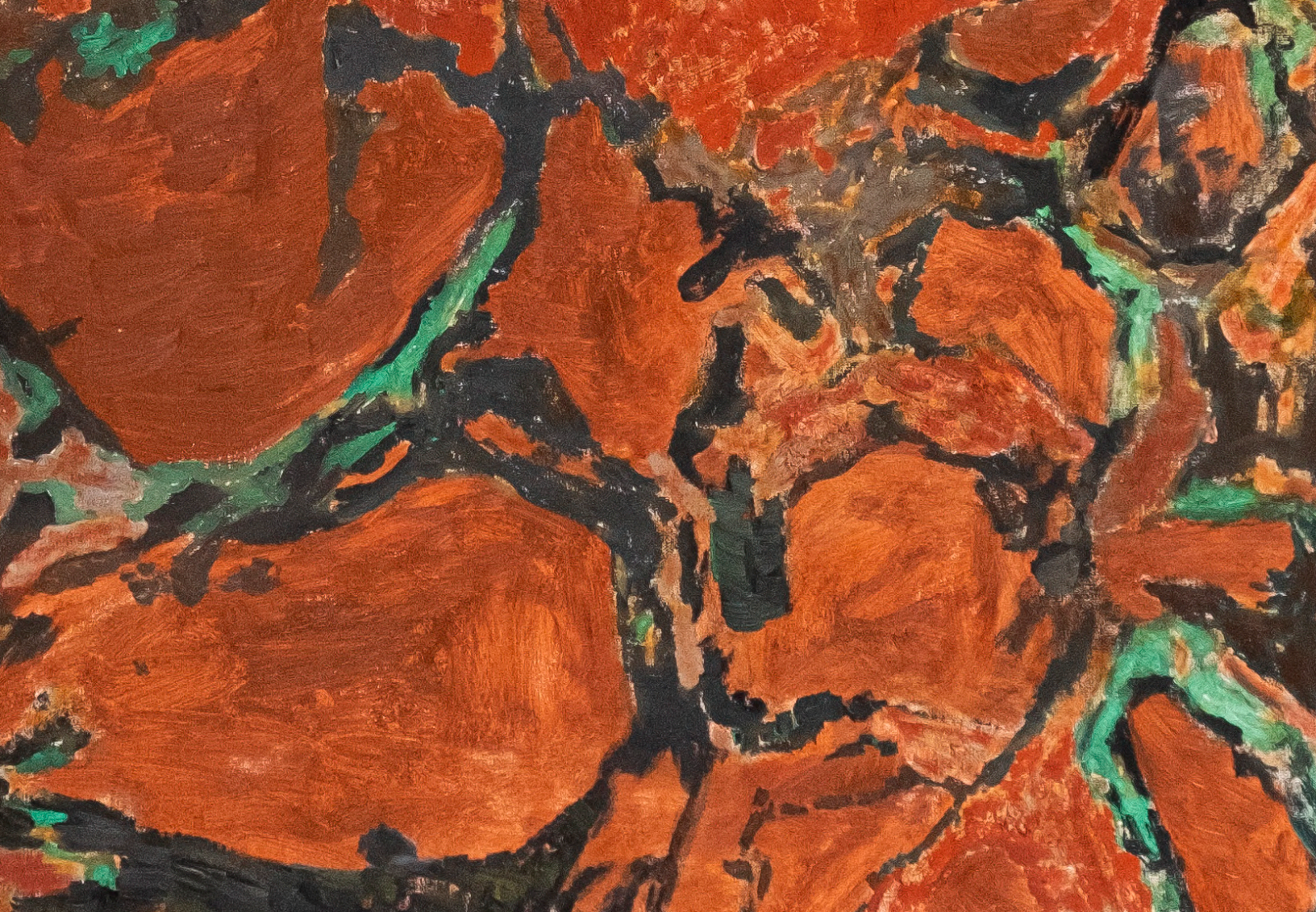
---

Randy Wray









# MAMOTH

---

## *Peacock, 2021*

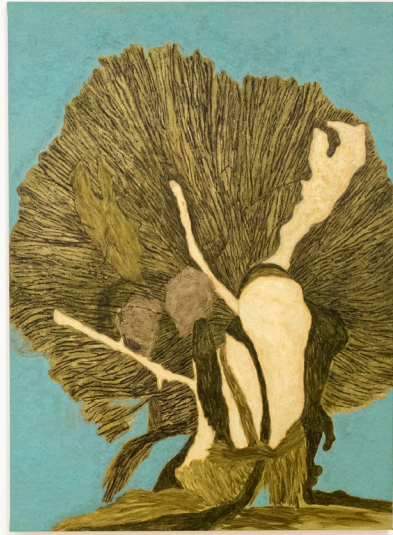
132 x 96.5cm (52 x 38in)  
oil on linen



---

Randy Wray







# MAMOTH

---

*Oric*, 2021

102 x 76cm (40 x 30in)  
oil on linen



---

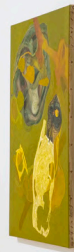
Randy Wray











# MAMOTH

---

*Host, 2021*

102 x 76cm (40 x 30in)  
oil on linen



---

Randy Wray







# MAMOTH

---

*Pletha*, 2021

102 x 76cm (40 x 30in)  
oil on linen

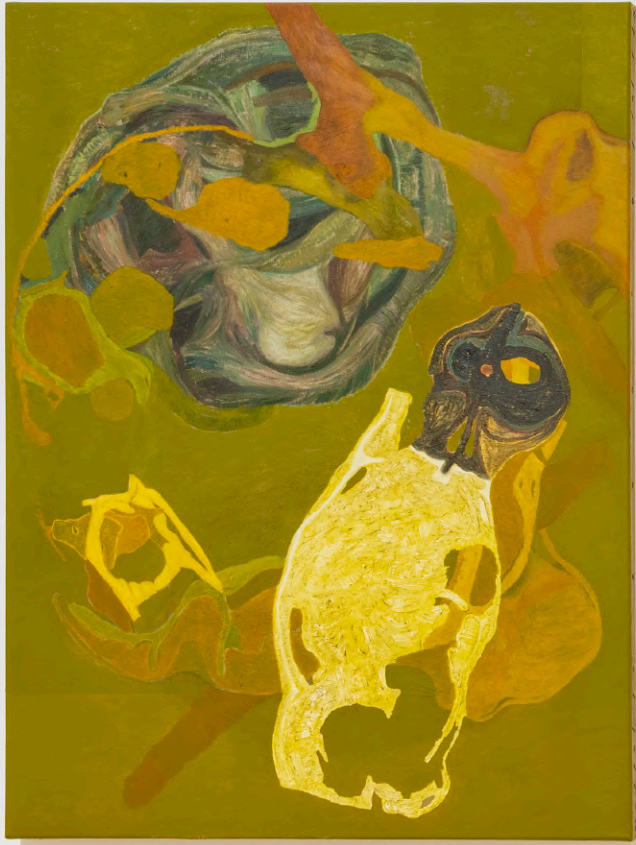


---

Randy Wray









# MAMOTH

---

## *Shade, 2021*

102 x 76cm (40 x 30in)  
oil on linen



---

Randy Wray







# MAMOTH

---

*Tether*, 2021

102 x 76cm (40 x 30in)  
oil on linen



---

Randy Wray











## Randy Wray

Painter and sculptor Randy Wray lives and works in Brooklyn, NY. He graduated from the University of North Carolina School of the Arts and received his B.F.A. from the Maryland Institute College of Art. His residencies include the Skowhegan School of Painting and Sculpture and the Marie Walsh Sharpe Space Program.

Wray's work has been the subject of numerous solo exhibitions including at the Weatherspoon Art Museum, Greensboro, North Carolina; Camargo Vilaça, São Paulo; White Columns, New York; and Greenville County Art Museum, South Carolina. Group exhibitions include MoMA PS1, New York; Cranbrook Art Museum, Bloomfield Hills, Michigan; Socrates Sculpture Park, New York; Kohler Arts Center, Sheboygan, Wisconsin; and Matthew Brown, Los Angeles. He is the recipient of awards including a Guggenheim Fellowship, a Gottlieb Grant, a NYFA Painting Fellowship, a Lillian Orlowsky and William Freed Grant and the Inaugural Irving Sandler Prize.

The artist's works are represented in museum collections including the Art Institute of Chicago, Illinois; Columbus Museum of Art, Ohio; Greenville County Art Museum, South Carolina; Museum of Modern Art, Rio de Janeiro; Rubin Museum of Art, New York; and the Weatherspoon Art Museum, Greensboro, North Carolina. Corporate collections include Goldman Sachs, JP Morgan Chase Bank, Neuberger Berman and Progressive.

# MAMOTH