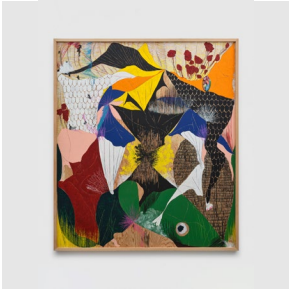


BORTOLAMI

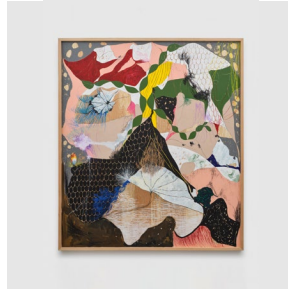
Naotaka Hiro

Sand-man

24 June – 26 August, 2022



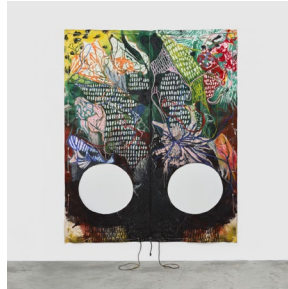
Naotaka Hiro
Untitled (Ripe), 2022
Acrylic, graphite, grease
pencil, and crayon on wood
96 x 84 1/8 x 2 1/4 in
(243.8 x 213.7 x 5.7 cm)
(NH0012)



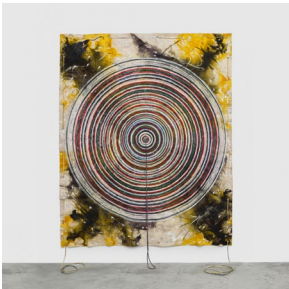
Naotaka Hiro
Untitled (Edifice), 2022
Acrylic, graphite, grease
pencil, and crayon on wood
96 x 84 1/8 x 2 1/4 in
(243.8 x 213.7 x 5.7 cm)
(NH0013)



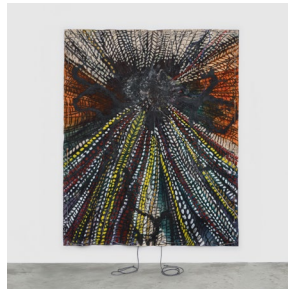
Naotaka Hiro
Untitled (Cherry), 2022
Oil Pastel, fabric
dye on canvas
102 x 83 1/2 in
(259.1 x 212.1 cm)
(NH0014)



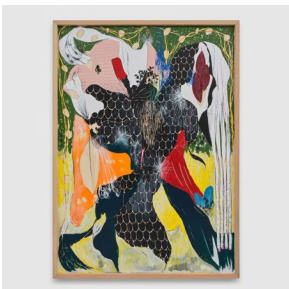
Naotaka Hiro
Untitled (Green Mansion), 2022
Oil Pastel, fabric
dye on canvas
102 x 83 1/2 in
(259.1 x 212.1 cm)
(NH0015)



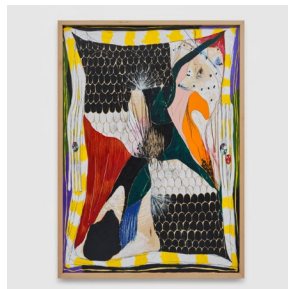
Naotaka Hiro
Untitled (Crawl #8), 2022
Oil Pastel, fabric
dye on canvas
102 x 83 1/2 in
(259.1 x 212.1 cm)
(NH0016)



Naotaka Hiro
Untitled (Radiance), 2022
Oil Pastel, fabric
dye on canvas
102 x 83 1/2 in
(259.1 x 212.1 cm)
(NH0017)

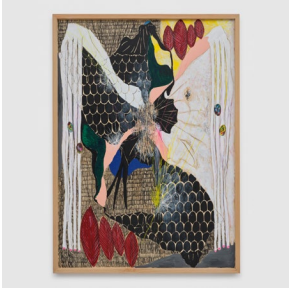


Naotaka Hiro
Untitled (May), 2022
Acrylic, graphite, grease
pencil, and crayon on wood
58 1/8 x 42 x 2 in
(147.6 x 106.7 x 5.1 cm)
(NH0008)



Naotaka Hiro
Untitled (3 Rings), 2022
Acrylic, graphite, grease
pencil, and crayon on wood
58 1/8 x 42 x 2 in
(147.6 x 106.7 x 5.1 cm)
(NH0009)

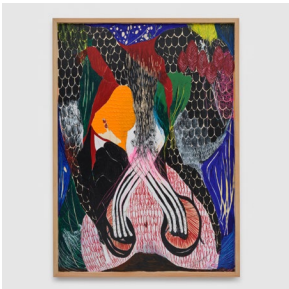
BORTOLAMI



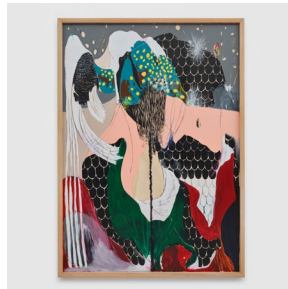
Naotaka Hiro
Untitled (Bashful), 2022
Acrylic, graphite, grease
pencil, and crayon on wood
58 1/8 x 42 x 2 in
(147.6 x 106.7 x 5.1 cm)
(NH0005)



Naotaka Hiro
Untitled (Interior), 2022
Acrylic, graphite, grease
pencil, and crayon on wood
58 1/8 x 42 x 2 in
(147.6 x 106.7 x 5.1 cm)
(NH0007)



Naotaka Hiro
Untitled (Boar), 2022
Acrylic, graphite, grease
pencil, and crayon on wood
58 1/8 x 42 x 2 in
(147.6 x 106.7 x 5.1 cm)
(NH0011)



Naotaka Hiro
Untitled (Cosmos), 2022
Acrylic, graphite, grease
pencil, and crayon on wood
58 1/8 x 42 x 2 in
(147.6 x 106.7 x 5.1 cm)
(NH0006)



Naotaka Hiro
Untitled (Stem), 2022
Acrylic, graphite, grease
pencil, and crayon on wood
58 1/8 x 42 x 2 in
(147.6 x 106.7 x 5.1 cm)
(NH0004)



Naotaka Hiro
Sandman, 2022
Bronze, stainless steel
rod, steel, black patina
roughly 72 x 32 x 17 in
(182.9 x 81.3 x 43.2 cm)
(NH0019)



Naotaka Hiro
Subterranean - Session 2, 2022
Video
9:50 minutes
Edition 1 of 6 + 2AP
(NH0018)