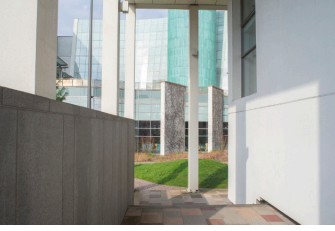


Towards Gallery



Simon Shim–Sutcliffe

Impression of sites unseen 1. (Library of Glasgow Caledonian University), , 2022

Photograph printed on Canson Infinity Platine fibre rag paper, mounted to white rag board
Print: 8 x 12 in. (20 x 30 cm.) Frame: 12 x 15.75 in. (30 x 40 cm.)

Edition of 3 + AP



Simon Shim–Sutcliffe

Impression of sites unseen 2. (Structure on Calle Bustamante in Valparaíso), 2021

Photograph printed on Canson Infinity Platine fibre rag paper, mounted to white rag board
Print: 8 x 12 in. (20 x 30 cm.) Frame: 12 x 15.75 in. (30 x 40 cm.)

Edition of 3 + AP



Simon Shim–Sutcliffe

Impression of sites unseen 3. (Lobby of Vienna postal savings bank), 2022

Photograph printed on Canson Infinity Platine fibre rag paper, mounted to white rag board
Print: 8 x 12 in. (20 x 30 cm.) Frame: 12 x 15.75 in. (30 x 40 cm.)

Edition of 3 + AP



Simon Shim–Sutcliffe

Impression of sites unseen 4. (Rooftop of Museum für Moderne Kunst Frankfurt), 2020

Photograph printed on Canson Infinity Platine fibre rag paper, mounted to white rag board
Print: 8 x 12 in. (20 x 30 cm.) Frame: 12 x 15.75 in. (30 x 40 cm.)

Edition of 3 + AP



Rosario Aninat

Moon, 2022

Forged stainless steel

35 x 19.5 in. (90 x 50 cm.)

Towards Gallery



Maria Trabulo

Collecting Dust (Improvement of the deposit area for the sculpture collection (Ground Floor) - National Museum of Ancient Art Lisbon © Mário Novaes 1972), 2021

Work: 17.75 x 23.75 in. (60 x 45 cm.) Frame: 28 x 34 in. (71 x 86 cm.)

Inkjet print on Museum Natural Smooth 310g/m² paper, Dust and sediments of tempera, paint, wood, stone, and clay



Maria Trabulo

Collecting Dust (Fig. 3 - Album de Phototypias - National Museum of Ancient Art Lisbon, 1882), 2022

Dust and sediments of tempera, paint, wood, stone, and clay on plexiglass

20.5 x 12.5 x 0.5 in. (52.5 x 31.5 x 1 cm.)



Maria Trabulo

Collecting Dust (Collection of Frames - National Museum of Ancient Art Lisbon © Abreu Nunes 1956), 2021

Work: 23.75 x 23.75 in. (60 x 60 cm.) Frame: 33 x 34 in. (84 x 84 cm.)

Inkjet print on Museum Natural Smooth 310g/m² paper, Dust and sediments of tempera, paint, wood, stone, and clay



Dylan Macaulay

For and After Rose, 2021

Wood, glass, lacquer, exterior acrylic paint and hardware

65.5 x 30 x 9.75 in. (165 x 76 x 25cm)

Towards Gallery

Additional Works



Simon Shim–Sutcliffe

Impression of sites unseen 5. (Vitrine in Frankfurt Zoo), 2022

Photograph printed on Canson Infinity Platine fibre rag paper, mounted to white rag board

Print: 8 x 12 in. (20 x 30 cm.) Frame: 12 x 15.75 in. (30 x 40 cm.)

Edition of 3 + AP



Maria Trabulo

Collecting Dust (Furniture Deposit - National Museum of Ancient Art Lisbon © Mário Novaes 1971), 2021

34.5 x 28.5 in. (86 x 71 cm.)

Inkjet print on Museum Natural Smooth 310g/m2 paper, Dust and sediments of tempera, paint, wood, stone, and clay

Unique print