

NICELLE BEAUCHENE GALLERY

JIM LEE AND THE CREAM TONES

FEBRUARY 13—MARCH 15, 2015

Exhibition Checklist (clockwise from office):



Untitled (Cream Tone #2), 2015
Oil, graphite and staples on linen over wood
69 x 48 inches



Untitled (Cream Tone #4), 2015
Oil and acrylic on linen
69 x 48 inches



Untitled (Cream Tone #3), 2015
Oil on linen with canvas
69 x 48 inches



Untitled (Cream Tone #6), 2015
Flashe paint on linen over wood
69 x 48 x 8 inches



Untitled (Cream Tone #8), 2015
Oil, spray enamel, collage and staples on linen
69 x 48 inches

NICELLE BEAUCHENE GALLERY



Untitled (Cream Tone #10), 2015
Oil and spray enamel on linen with staples
69 x 48 inches



Untitled (Cream Tone #9), 2015
Acrylic, chalk, graphite and collage on linen
69 x 48 inches



Untitled (Cream Tone #12), 2015
Flashe paint on linen
69 x 48 inches



Untitled (Cream Tone #11), 2015
Flashe paint on linen over wood
69 x 48 x 8 inches



Untitled (Cream Tone #7), 2015
Oil, fabric and spray enamel on linen with staples
69 x 48 inches



Untitled (Cream Tone #5), 2015
Oil, rubber and enamel on linen and canvas with staples
85 x 54 inches

NICELLE BEAUCHENE GALLERY



Untitled (Cream Tone #13), 2015
Flashe paint on canvas with staples and canvas scraps
74 x 48 x 5 inches



Untitled, 2015
Mixed media
20 ½ x 14 ½ inches



Untitled Composition (Cream Top, Double Stripe),
2014
Oil on paper
20 ½ x 14 ½ inches



Untitled (Bottom Border Insert), 2014
Oil and ink on paper with collage
20 ½ x 14 ½ inches



Untitled (Cream Tone #1), 2015
Oil, graphite and staples on linen over wood
69 x 48 x 9 inches

NICELLE BEAUCHENE GALLERY



Untitled (Cream Side Right), 2015
Oil and collage on paper
18 x 12 inches



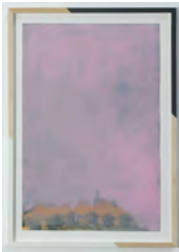
Untitled (Hanley/Pink/Cream), 2014
Oil on digital print poster
20 ½ x 14 ½ inches



Untitled (Gorilla Blue Void), 2014
Watercolor on paper with glue
21 ½ x 12 inches



Untitled (Ruby Repose), 2014
Oil, spray glitter and staples on paper
14 ½ x 20 ½ inches



Untitled (Soft/Mute), 2014
Oil on paper
20 ½ x 14 ½ inches



Untitled (Cream/Orange/Kern), 2014
Oil and collage on card stock
13 ½ x 11 inches

NICELLE BEAUCHENE GALLERY



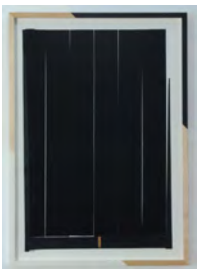
Untitled (of Track and Field), 2014
Oil and graphite on paper
19 ½ x 16 ½ inches



Untitled (Chrome/Cream Relief), 2014
Oil, enamel and staples on wood and Masonite
14 ¼ x 9 ¼ inches



Untitled (Olive Over), 2015
Oil on paper
18 x 12 inches



Untitled (Cream Gap and Black), 2014
Tape and wood on paper
20 ½ x 14 ½ inches



Untitled (Two Creams V Black), 2015
Oil and linen on paper
18 x 12 inches



Untitled (Formal Issues), 2014
Oil, graphite and collage on paper
18 ½ x 14 ½ inches

NICELLE BEAUCHENE GALLERY



Untitled (Easy, Unrestrained), 2015
Oil and enamel on linen and poly sheeting
23 x 17 ½ inches



Untitled (Natural Selection), 2014
Oil and graphite on paper
21 ¾ x 16 inches



Untitled, 2014
Oil on paper
18 ¼ x 14 ¼ inches



Untitled (Pink, Cream, Peel, Down), 2014
Oil and collage on card stock
20 ½ x 14 ½ inches



Untitled, 2014
Mixed media
20 ½ x 14 ½ inches



Untitled (Cream Tone Construction), 2014
Rubber, steel, with Bungee cords and wire
9 x 16 ½ x 12 inches

NICELLE BEAUCHENE GALLERY



Untitled (PINKUS), 2014
Oil on paper
20 ½ x 14 ½ inches



Untitled (Block and Step), 2015
Oil on corrugated cardboard with wood and wire
5 x 12 x 2 ½ inches



Untitled (Drawings for Four Vertical Graves),
2014
Oil on paper
20 ½ x 14 ½ inches



Untitled (Cream Tone #14), 2015
Oil, acrylic, and flashe paint on linen with staples
69 x 48 inches