

NICELLE BEAUCHENE GALLERY

Andrea Joyce Heimer

Fountainhead

February 8 – March 11, 2017

Front room, clockwise from entrance:



Because we didn't imprint a thing called genetic sexual attraction can occur. What if we want to sleep together? I feel like a lunatic with this worry., 2018

Acrylic and pencil on panel
24 x 30 inches



Maybe you will explain to me about my birthday, maybe other children were born that day and animals too. Sometimes I dream about the other children. In the dreams we are trying to help each other., 2018

Acrylic and pencil on panel
40 x 30 inches



I get so angry that I ruin everything, I can vomit into violence, I can separate things., 2017

Acrylic and pencil on panel
18 x 24 inches



Maybe I'd just get rid of my clothes and leave it alone., 2017

Acrylic and pencil on panel
36 x 48 inches



Maybe everything will be fine, and we'll have a group. Perhaps everything is good, we have a party., 2018

Acrylic and pencil on panel
24 x 30 inches

NICELLE BEAUCHENE GALLERY



What if I was welcomed in this house and made a part of the work? I would not deny it, but what if I cannot adapt or get in. Then I stand, thick and lost, a little white statuette in a crowded room., 2017
Acrylic and pencil on panel
30 x 40 inches



What if you can't be kept., 2017
Acrylic and pencil on panel
24 x 36 inches

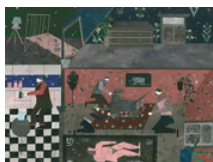


I do not know what these people are. You may be haughty, or God-fearing, or the future, or will become a thief. The different routes are strange and I am scared., 2017
Acrylic and pencil on panel
40 x 30 inches

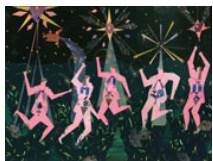
Back room, clockwise from entrance:



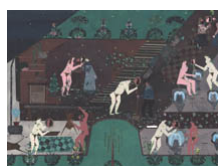
I am too tired to pull this way. What if one step is too far in the opposite direction, between the two places, and in which direction?, 2017
Acrylic and pencil on panel
24 x 36 inches



Perhaps I forgot I had to leave, deep under the floor., 2017
Acrylic and pencil on panel
18 x 24 inches



My brothers and sisters and I will have the same framework if I can find them., 2017
Acrylic and pencil on panel
18 x 24 inches



If I did not find you will I always live in a world of ghosts?, 2018
Acrylic and pencil on panel
30 x 40 inches