

Sarah Pucci and Dorothy Iannone
Organized by Scott Portnoy
September 10 - October 15, 2022
2504 W 7th St., Suite C, Los Angeles, CA 90057



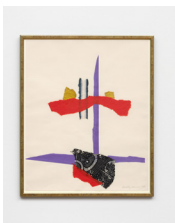
Dorothy Iannone
Steadfast, 1962
Framed collage, handmade Japanese paper and gold leaf on paper
Framed dimensions: 18 7/8 x 15 3/4 inches (48 x 40 cm)
(Inv# DIA0003)



Dorothy Iannone
Hidden Assets, 1962
Framed collage, handmade Japanese paper and gold leaf on paper
Framed dimensions: 18 7/8 x 15 3/4 inches (48 x 40 cm)
(Inv# DIA0001)



Dorothy Iannone
Undulations, 1962
Framed collage, handmade Japanese paper and gold leaf on paper
Framed dimensions: 18 7/8 x 15 3/4 inches (48 x 40 cm)
(Inv# DIA0002)



Dorothy Iannone
Still afloat, 1962
Framed collage, handmade Japanese paper and gold leaf on paper
Framed dimensions: 18 7/8 x 15 3/4 inches (48 x 40 cm)
(Inv# DIA0004)



Sarah Pucci
Coming, c. 1970
Beads, sequins, pins, foam
5 7/8 x 13 3/8 inches (15 x 34 cm)
(Inv# SPU0014)



Sarah Pucci
Untitled, c. 1970
Beads, sequins, pins, foam, metal cup
8 5/8 x 5 1/2 inches (22 x 14 cm)
(Inv# SPU0001)



Sarah Pucci
A Cheerful Heart, c. 1980
Beads, sequins, pins, foam
3 1/2 x 12 5/8 x 12 5/8 inches (9 x 32 x 32 cm)
(Inv# SPU0006)



Sarah Pucci
Cool Goblet, c. 1970
Beads, sequins, pins, foam, metal bowl
7 1/8 x 9 1/8 inches (18 x 23 cm)
(Inv# SPU0011)



Sarah Pucci
Music, c. 1980
Pearls, sequins, pins, foam, metal
2 3/8 x 8 5/8 inches (6 x 22 cm)
(Inv# SPU0015)



Sarah Pucci
Twilight, c. 1970
Beads, sequins, pins, foam
9 7/8 x 11 3/4 x 5 7/8 inches (25 x 30 x 15 cm)
(Inv# SPU0002)



Sarah Pucci
The Heart of the Peacock, c. 1990
Beads, sequins, pins, foam
4 x 7 1/8 x 8 1/4 inches (10 x 18 x 21 cm)
(Inv# SPU0010)



Sarah Pucci
Christmas Joy, c. 1980
Beads, sequins, pins, foam
5 1/8 x 12 5/8 x 3 1/8 inches (13 x 32 x 8 cm)
(Inv# SPU0003)



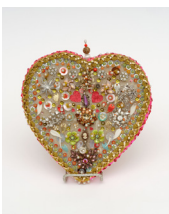
Sarah Pucci
From the series : Christmas Wreath, c. 1970
Beads, sequins, pins, foam
2 3/4 x 12 1/4 inches (7 x 31 cm)
(Inv# SPU0008)



Sarah Pucci
Saint Holding Infant Jesus, c. 1980
Beads, sequins, pins, foam, plastic statuette
5 7/8 x 5 7/8 inches (15 x 15 cm)
(Inv# SPU0005)



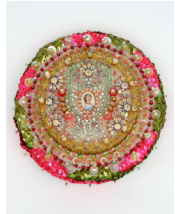
Sarah Pucci
From the series : Ornaments, c. 1980
Beads, sequins, pins, foam
7 1/2 x 5 1/8 inches (19 x 13 cm)
(Inv# SPU0004)



Sarah Pucci
A Heart That Sees You, c. 1990
Beads, sequins, pins, foam, locket, stand
2 3/4 x 13 x 11 3/4 inches (7 x 33 x 30 cm)
(Inv# SPU0009)



Sarah Pucci
Shadow Box, c. 1970
Beads, sequins, pins, foam, plastic, mirror
8 1/4 x 8 5/8 inches (21 x 22 cm)
(Inv# SPU0013)



Sarah Pucci
Beautiful Memories, c. 1970
Beads, sequins, pins, foam, medaillon
4 3/4 x 11 3/4 inches (12 x 30 cm)
(Inv# SPU0012)



Sarah Pucci
Beauty Crown, c. 1970
Beads, sequins, pins, foam
4 x 10 5/8 inches (10 x 27 cm)
(Inv# SPU0007)



Dorothy Iannone
Sarah Pucci: A Piece About My Mother and Her Work, 1980
Single-channel video
TRT 27:29
(DIA0005)