



**Virgil Abloh**

*Air Rubber Dunk Off-White UNC*  
(SDVA01)



**!MEDIENGRUPPE BITNIK**

*Flagged for Explicit Image, 2021*

Made to order, unique, custom bomber jacket printed with results of personal social media assessment, Material: Fabric 100% Polyester, Lining: 97% Polyester, 3% Spandex, Rib: 45% Cotton, 45% Acrylic, 10% Polyester

Made in UK.

Size (S - XL)

(SDMGB10)



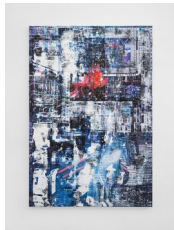
**!MEDIENGRUPPE BITNIK**

*Flagged for Explicit Image (Wallpaper), 2021*

Unique custom wallpaper, printed with custom-assessed social media data, adapted site specifically and to size of the wall

Dimension variable

(SDMGB11)



**Chris Dorland**

*Untitled (identity stack), 2022*

Acrylic polymer, pigment, gesso, UV coating with aluminum stretcher bars on linen

68 x 46 in

172.7 x 116.8 cm

(SDDC046)



**Sin Wai Kin**

*Today's Top Stories & Island Universe, 2020*

Single-channel HD video, colour, sound (6 minutes 30 seconds)

& Makeup on facial wipe

13 1/2 x 12 1/2 x 3 in

34.5 x 31.5 x 7 cm

(SDSWK01)



**Kin-Ting Li**

*Deadpan, 2021*

Oil on canvas

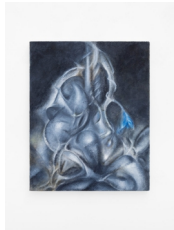
9 1/2 x 11 3/4 in

24 x 30 cm

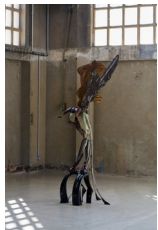
(SDKTL03)



**Kin-Ting Li**  
*Nuance*, 2021  
Oil on canvas  
9 1/2 x 11 3/4 in  
24 x 30 cm  
(SDKTL01)



**Kin-Ting Li**  
*Overtake*, 2021  
Oil on canvas  
20 x 16 in  
51 x 40 cm  
(SDKTL02)



**Isaac Lythgoe**  
*Why can't we remember the future?*, 2022  
Plywood, carbon fibre, cow stomach leather, Pla, epoxy, epoxy clay, fillers, automotive paint, acrylic paint, lacquer, stainless steel, oiled walnut, hardware  
82 1/2 x 27 1/2 x 31 1/2 in  
210 x 70 x 80 cm  
(SDIL30)



**Metahaven**  
*Qualia & Grandmother*, 2022  
Tapestry, wool and lurex  
96 1/2 x 59 in  
245 x 150 cm  
Edition of 3  
(SDM01)



**David Rappeneau**  
*Untitled*, 2019  
Colored pencil, ballpoint pen, pencil, charcoal pencil, paint marker on paper  
12 x 8 1/2 in  
30 x 21 cm  
(SDDR01)



**David Rappeneau**

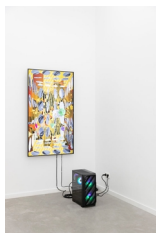
*Untitled, 2019*

Colored pencil, ballpoint pen, pencil, charcoal pencil, paint marker on paper

11 1/2 x 8 1/2 in

29.5 x 21 cm

(SDDR02)



**Tabor Robak**

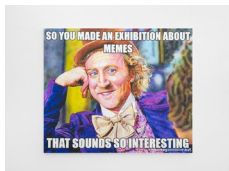
*TabCorp, 2022*

4K Live Simulation, Original Software, 65" TV, Intel Core i3-12100F 3.3 GHz Quad-Core Processor, Vetroo V5 52 CFM CPU Cooler, Gigabyte B660M DS3H DDR4 Micro ATX LGA1700 Motherboard, Silicon Power GAMING 16 GB (2 x 8 GB) DDR4-3200 CL16 Memory, PNY CS900 120 GB 2.5" Solid State Drive, MSI GeForce RTX 3060 Ti LHR 8 GB VENTUS 2X OCV1 Video Card, Corsair SPEC-04 ATX Mid Tower Case, EVGA SuperNOVA GA 650 W 80+ Gold Certified Fully Modular ATX Power Supply, Microsoft Windows 10 Home OEM 64-bit, Cooler Master MasterFan MF Halo 47.2 CFM 120 mm Fans 3-Pack

Variable

3 + 2 AP

(SDTR01)



**Christine Wang**

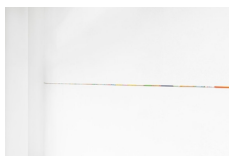
*Sarcastic Willy Wonka, 2020*

Acrylic on canvas

60 x 72 in

152.4 x 182.9 cm

(SDCW01)



**Yue Yuan**

*Horizon Extensible, 2022*

Installation in situ, envelope 14.5x22.5cm x 45

Variable

(SDYY01)

Virgil Abloh  
*Air Rubber Dunk Off-White UNC*



(SDVA01)

**!MEDIENGRUPPE BITNIK**  
*Flagged for Explicit Image, 2021*



Made to order, unique, custom bomber jacket printed with results of personal social media assessment, Material: Fabric 100% Polyester, Lining: 97% Polyester, 3% Spandex, Rib: 45% Cotton, 45% Acrylic, 10% Polyester  
Made in UK.  
Size (S - XL)  
(SDMGB10)

**Description**

Cleaning: 30C fine wash / dry cleaning / do not tumble dry.

## !MEDIENGRUPPE BITNIK *Flagged for Explicit Image (Wallpaper), 2021*



Unique custom wallpaper, printed with custom-assessed social media data, adapted site specifically and to size of the wall  
Dimension variable  
(SDMGB11)

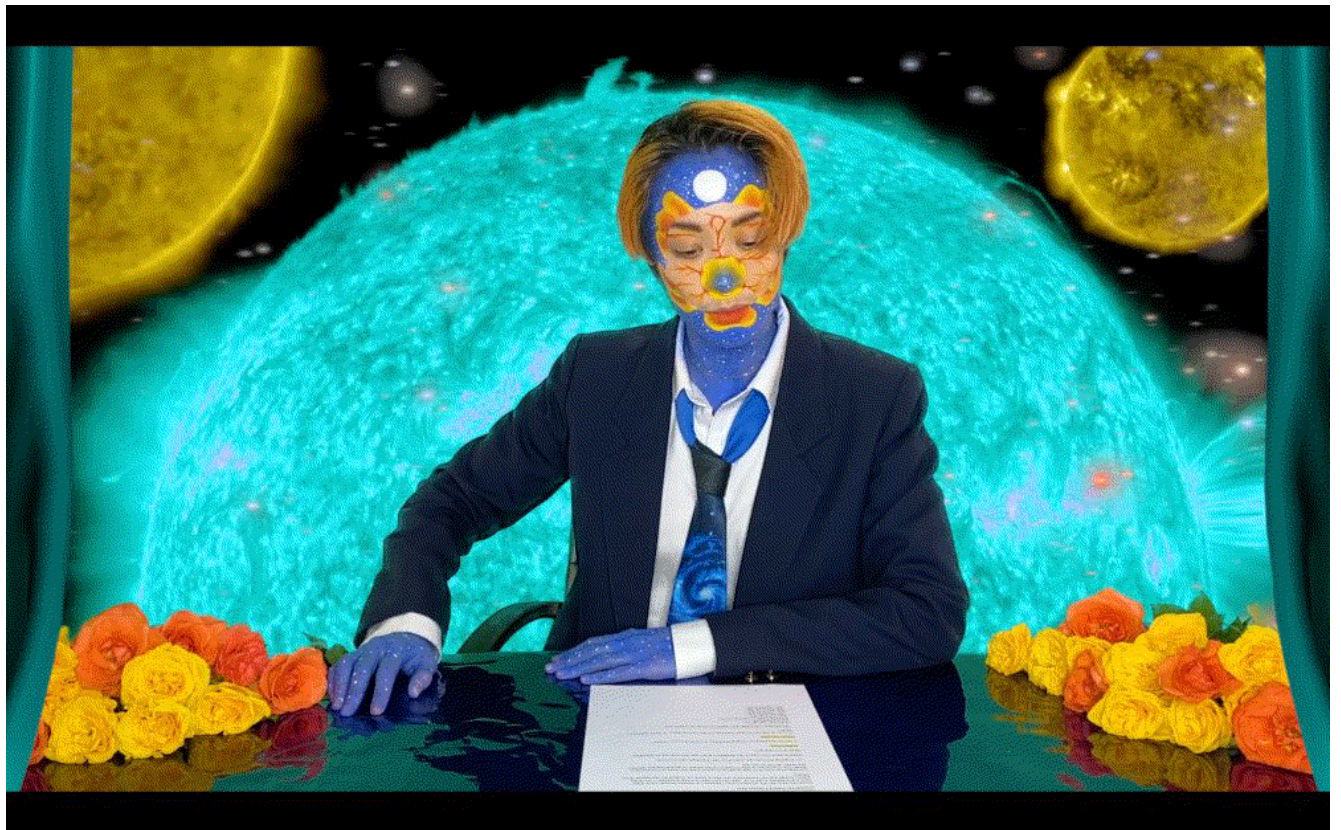
Chris Dorland  
*Untitled (identity stack)*, 2022



Acrylic polymer, pigment, gesso, UV coating with aluminum stretcher bars on linen  
68 x 46 in  
172.7 x 116.8 cm  
(SDDC046)

Sin Wai Kin

*Today's Top Stories & Island Universe, 2020*



Single-channel HD video, colour, sound (6 minutes 30 seconds)

& Makeup on facial wipe

13 1/2 x 12 1/2 x 3 in

34.5 x 31.5 x 7 cm

(SDSWK01)



Kin-Ting Li  
*Deadpan*, 2021



Oil on canvas  
9 1/2 x 11 3/4 in  
24 x 30 cm  
(SDKTL03)

Kin-Ting Li  
*Nuance*, 2021



Oil on canvas  
9 1/2 x 11 3/4 in  
24 x 30 cm  
(SDKTL01)

Kin-Ting Li  
*Overtake*, 2021



Oil on canvas  
20 x 16 in  
51 x 40 cm  
(SDKTL02)

Isaac Lythgoe

*Why can't we remember the future?*, 2022



Plywood, carbon fibre, cow stomach leather, Pla, epoxy, epoxy clay, fillers, automotive paint, acrylic paint, lacquer, stainless steel, oiled walnut, hardware  
82 1/2 x 27 1/2 x 31 1/2 in  
210 x 70 x 80 cm  
(SDIL30)

Metahaven  
*Qualia & Grandmother, 2022*



Tapestry, wool and lurex  
96 1/2 x 59 in  
245 x 150 cm  
Edition of 3  
(SDM01)

David Rappeneau  
*Untitled*, 2019



Colored pencil, ballpoint pen, pencil, charcoal pencil, paint marker on paper  
12 x 8 1/2 in  
30 x 21 cm  
(SDDR01)

David Rappeneau  
*Untitled*, 2019



Colored pencil, ballpoint pen, pencil, charcoal pencil, paint marker on paper  
11 1/2 x 8 1/2 in  
29.5 x 21 cm  
(SDDR02)

Tabor Robak  
*TabCorp, 2022*



4K Live Simulation, Original Software, 65" TV, Intel Core i3-12100F 3.3 GHz Quad-Core Processor, Vetroo V5 52 CFM CPU Cooler, Gigabyte B660M DS3H DDR4 Micro ATX LGA1700 Motherboard, Silicon Power GAMING 16 GB (2 x 8 GB) DDR4-3200 CL16 Memory, PNY CS900 120 GB 2.5" Solid State Drive, MSI GeForce RTX 3060 Ti LHR 8 GB VENTUS 2X OCV1 Video Card, Corsair SPEC-04 ATX Mid Tower Case, EVGA SuperNOVA GA 650 W 80+ Gold Certified Fully Modular ATX Power Supply, Microsoft Windows 10 Home OEM 64-bit, Cooler Master MasterFan MF Halo 47.2 CFM 120 mm Fans 3-Pack

Variable  
3 + 2 AP  
(SDTR01)



## **Description**

TabCorp is a realtime "generative painting" and in it there are many scenes of "work life" in a broad sense, which when taken as a whole suggests a "kindergarten to corporate misery pipeline." The imagery all bleeds together using some unique special effects Tabor developed over the years. There are also objects that bounce around in a physics simulation like, credit cards, bullet casings, and RPG dice, that leave painterly streaks on the background

Christine Wang  
*Sarcastic Willy Wonka, 2020*



Acrylic on canvas  
60 x 72 in  
152.4 x 182.9 cm  
(SDCW01)

Yue Yuan  
*Horizon Extensible*, 2022



Installation in situ, envelope 14.5x22.5cm x 45  
Variable  
(SDYY01)

**Description**

I mail the packages consumed every day to the gallery and invite the gallery to use them to change the colour of this line. I attempt to depict a variable landscape in space.