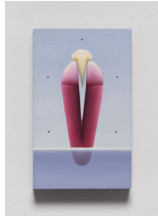


## Derosia

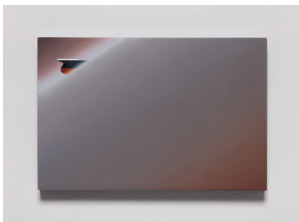
### Main Gallery:



Alexandra Noel  
*Playing Music for a Seafood Tower Returning to Sea, 2022*  
Oil and enamel on panel  
5 x 7 x .75 in (12.7 x 17.8 x 1.9 cm)  
AN321



Alexandra Noel  
*Titanic Radish with Butter, 2022*  
Oil and enamel on panel  
4.5 x 2.75 x .75 in (11.4 x 7 x 1.9 cm)  
AN324



Alexandra Noel  
*A Titanic Tilt, 2022*  
Oil and enamel on panel  
6 x 9 x .75 in (15.2 x 22.9 x 1.9 cm)  
AN302



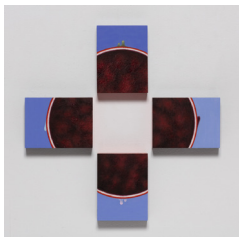
Alexandra Noel  
*Sublime (Up or Down), 2022*  
Oil and enamel on panel  
6 x 7 x .75 in (15.2 x 17.8 x 1.9 cm)  
AN312



Alexandra Noel  
*Happy Chickens, 2022*  
Oil and enamel on panel  
4 x 4.5 x .75 in (10.2 x 11.4 x 1.9 cm)  
AN320

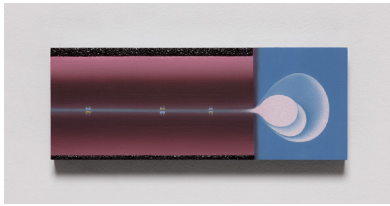


Alexandra Noel  
*Breast Milk Tilt, 2022*  
Oil and enamel on panel  
6 x 5 x .75 in (15.2 x 12.7 x 1.9 cm)  
AN322

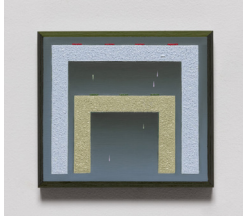


Alexandra Noel  
*Counterclockwise, Blood Orange, 2022*  
Oil and enamel on panel  
11.5 x 11.5 x .75 in (29.2 x 29.2 x 1.9 cm)  
Comprising four panels each measuring 3 x 4 x .75 in (7.6 x 10.2 x 1.9 cm)  
AN319

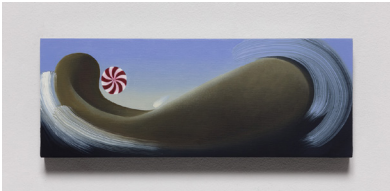
## Derosia



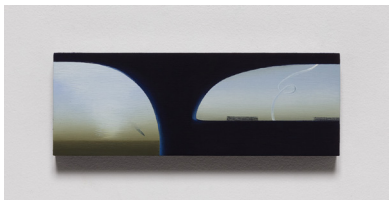
Alexandra Noel  
*Triple Bubble*, 2022  
Oil and enamel on panel  
3 x 8 x .75 in (7.6 x 20.3 x 1.9 cm)  
AN305



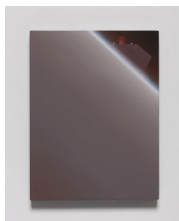
Alexandra Noel  
*Nesting Table (You Started It)*, 2022  
Oil and enamel on panel  
4 x 4.5 x .75 in (10.2 x 11.4 x 1.9 cm)  
AN308



Alexandra Noel  
*On a globe that belongs to whales*, 2022  
Oil and enamel on panel  
3 x 8 x .75 in (7.6 x 20.3 x 1.9 cm)  
AN311



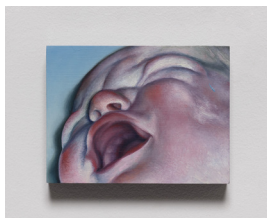
Alexandra Noel  
*Tornado in the Round I*, 2022  
Oil and enamel on panel  
2.5 x 7 x .75 in (6.4 x 17.8 x 1.9 cm)  
AN329



Alexandra Noel  
*Cocked Costa*, 2022  
Oil and enamel on panel  
8.5 x 6.5 x .75 in (21.6 x 16.5 x 1.9 cm)  
AN303

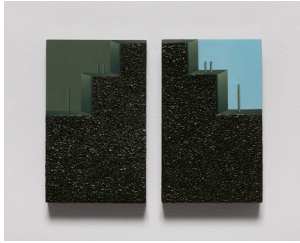


Alexandra Noel  
*Stuck in the gum you stuck under the table*, 2022  
Oil and enamel on panel  
4.5 x 2.75 x .75 in (11.4 x 7 x 1.9 cm)  
AN313

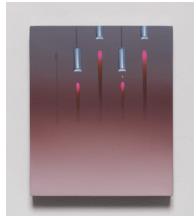


Alexandra Noel  
*The Color of Fluid III*, 2022  
Oil and enamel on panel  
3 x 4 x .75 in (7.6 x 10.2 x 1.9 cm)  
AN307

## Derosia



Alexandra Noel  
*32 to 33, 2022*  
Oil and enamel on panels  
4.5 x 6 x .75 in (11.4 x 15.2 x 1.9 cm)  
Comprising two panels each measuring 4.5 x 2.75 x .75 in (11.4 x 7 x 1.9 cm)  
AN323



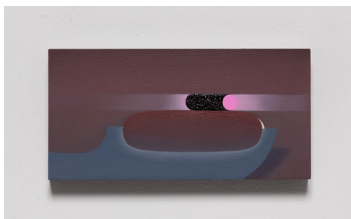
Alexandra Noel  
*Milk and Moon, 2022*  
Oil and enamel on panel  
6 x 5 x .75 in (15.2 x 12.7 x 1.9 cm)  
AN306



Alexandra Noel  
*Wind Over Wheat, 2022*  
Oil and enamel on panel  
4.5 x 4 x .75 in (11.4 x 10.2 x 1.9 cm)  
AN336



Alexandra Noel  
*Still Waiting for More Land, 2022*  
Oil and enamel on panel  
6 x 7 x .75 in (15.2 x 17.8 x 1.9 cm)  
AN304



Alexandra Noel  
*Knife Beam, 2022*  
Oil and enamel on panel  
3.5 x 7 x .75 in (8.9 x 17.8 x 1.9 cm)  
AN309



Alexandra Noel  
*The Web, 2022*  
Oil and enamel on panel, wood base  
3 x 3 x 2.25 in (7.6 x 7.6 x 5.7 cm)  
AN316



Alexandra Noel  
*Gum under Desk, Desk in the Grass (Upside Down), 2022*  
Oil and enamel on panel, chewed Bazooka gum, gold  
3 x 3 x 2 in (7.6 x 7.6 x 5.1 cm)  
AN317

## Derosia

### Back Gallery:



Alexandra Noel  
*Dock*, 2021  
Digital video  
1:33 minute loop  
Edition 1 of 2, 1 AP  
AN335

### Front Office:



Alexandra Noel  
*Eight For*, 2022  
Oil and enamel on panel  
6.5 x 8.5 x .75 in (16.5 x 21.6 x 1.9 cm)  
AN310



Alexandra Noel  
*Church Steeple Ice Cream Cone (Neapolitan)*, 2022  
Oil and enamel on wood, metal hook  
5.5 x 1 x 1 in (14 x 2.5 x 2.5 cm)  
AN314



Alexandra Noel  
*Cloud (Marseilles, France)*, 2019  
Archival pigment print in polished aluminum frame  
11.75 x 18 in (29.8 x 45.7 cm)  
12.5 x 18.5 x 1 in (31.8 x 47 x 2.5 cm) Framed  
Edition 1 of 2, 1 AP  
AN331



Alexandra Noel  
*Cutting More Pieces*, 2022  
Oil and enamel on panel  
3 x 4 x .75 in (7.6 x 10.2 x 1.9 cm)  
AN315