

Stephen Polatch  
*Swan-Road*



**Margot  
Samel**

## Stephen Polatch *Swan-Road*

Margot Samel is pleased to announce Stephen Polatch's first US solo exhibition, *Swan-Road*. The title of the exhibition draws from the Old English word *swan-rad*, a kenning for the word "sea," that is at the same time poetic and literal. Polatch dissolves the complex hierarchy of natural, architectural, and human orders, set within the urban milieu of Glasgow in his new works. His diminutive egg-tempera paintings operate on contrasting registers. He mixes his pigments together on the surface of the canvas to yield tender depictions of the micro and mundane, yet often the harmony of his compositions is unsettled by disorienting vantage points and surreal twists. Polatch's works combine a wide range of historical references: from the lyricism and symbolic imagery of medieval illuminated manuscripts, the brilliant lighting of Les Nabis, to the repetitive mechanics of Futurism—within the interconnected systems of Polatch's compositions is the promise, the rushing fluidity, of discovering the new in the familiar.

Stephen Polatch (b. 1990, London, UK) lives and works in Glasgow, UK. Polatch received his BFA from at The Ruskin School of Art, Oxford, UK in 2013, and went on to study at the Royal Drawing School in London. Recent exhibitions include: *To be a giant and keep quiet about it*, Margot Samel, New York, US (2022); *Clyde*, Soft Opening, London, UK (2022); *Prestwick II*, New Glasgow Society East, Glasgow, UK (2022); *Peepers*, K Halstead, London, UK (2021); *A Many Voiced Argument with Life*, Glasgow International/Market Gallery, Glasgow, UK (2021); *Prestwick*, New Glasgow Society East, Glasgow, UK (2021); *The Amber Room II*, Amber Room, London, UK (2020); *Eigenheim*, Soft Opening, London, UK (2020); *Graven Images*, New Glasgow Society, Glasgow, UK (2019); *Drawings of Iasi*, Iasi, RO (2019); *Bilder*, New Glasgow Society, Glasgow, UK (2018), and *Unswep House*, Unit 42, Glasgow, UK (2017). Upcoming group exhibitions include: *To be a giant and keep quiet about it*, Yee Society, Hong Kong; *Visceral*, Althuis Hofland, Amsterdam, NL.

Margot Samel  
295 Church St  
New York, NY 10013

+1 212 597-2747  
info@margotsamel.com

margotsamel.com

# Margot Samel



Stephen Polatch  
*Milk Bath with Bottles*, 2022  
Egg tempera on gesso board  
7 7/8 x 12 1/4 in | 20 x 31 cm

# Margot Samel



Stephen Polatch

*RIP DoE*, 2022

Egg tempera on gesso board

16 1/8 x 11 3/4 in | 41 x 30 cm

# Margot Samel



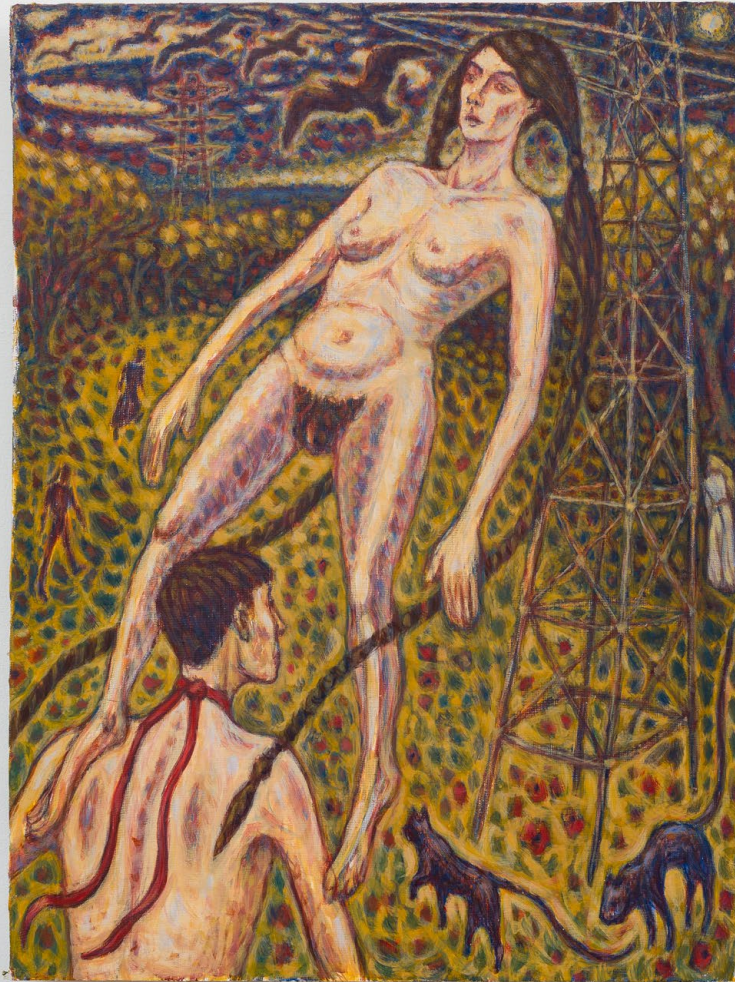
Stephen Polatch  
*West Princes Street, 2022*  
Egg tempera on gesso board  
17 3/8 x 24 in | 44 x 61 cm

# Margot Samel



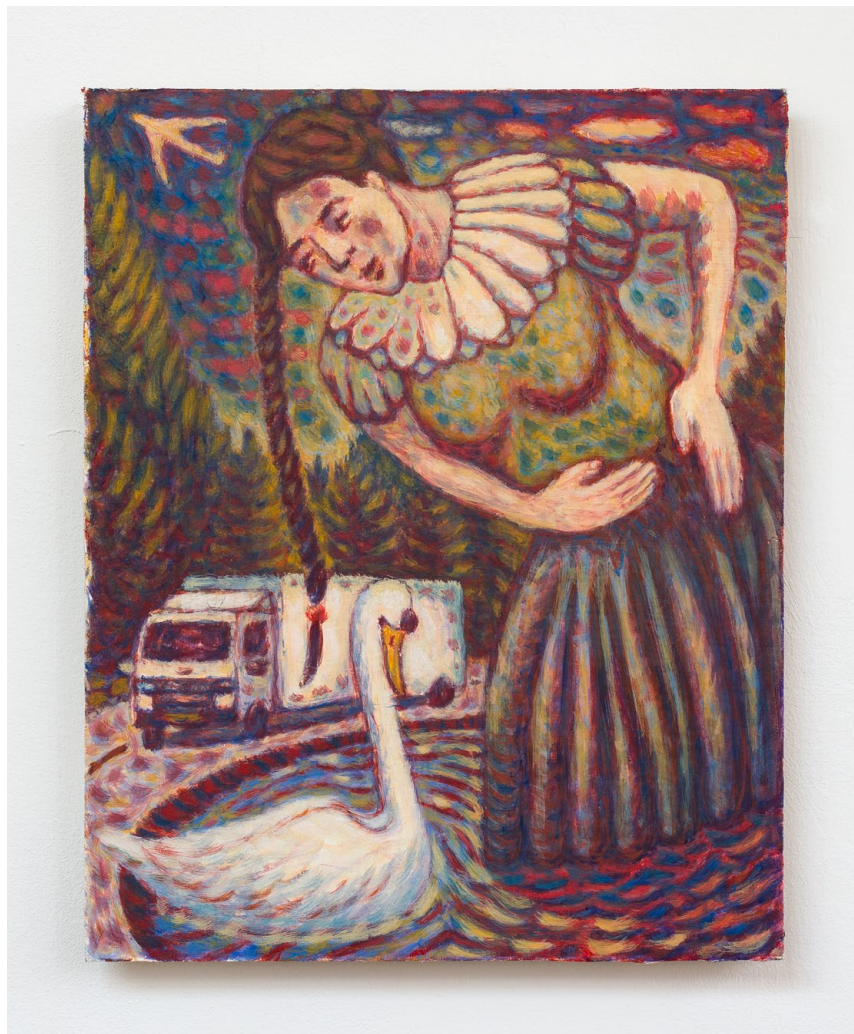
Stephen Polatch  
*HNY*, 2022  
Egg tempera on gesso board  
8 1/4 x 11 3/4 in | 21 x 30 cm

# Margot Samel



Stephen Polatch  
*Milngavie*, 2022  
Egg tempera on gesso board  
16 7/8 x 12 5/8 in | 43 x 32 cm

# Margot Samel



Stephen Polatch  
*Euro Truck*, 2022  
Egg tempera on gesso board  
10 5/8 x 8 5/8 in | 27 x 22 cm



# Margot Samel



Stephen Polatch  
*Red Clyde*, 2022  
Egg tempera on gesso board  
18 1/8 x 24 in | 46 x 61 cm

# Margot Samel



Stephen Polatch  
*Figures with Owl*, 2022  
Egg tempera on gesso board  
16 1/2 x 12 5/8 in | 42 x 32 cm

# Margot Samel



Stephen Polatch  
*Concorde*, 2022  
Egg tempera on gesso board  
11 3/4 x 15 3/8 in | 30 x 39 cm

# Margot Samel



Stephen Polatch  
*Chrysalid*, 2022  
Egg tempera on gesso board  
11 3/4 x 8 1/8 in | 30 x 20.5 cm