

Lone Wolf will be Wong's most ambitious work to date, creating an immersive environment that embodies and disrupts the architecture, equipment and ethos of exercise and wellness centres, adopting tropes drawn from the fitness, 'cult', 'CrossFit' and online spiritual leaders. The work also features 3D rendered elements made by artist and frequent collaborator Brië Trenchery. Through an ambivalent approach, which creates space for both cynicism and hope, *Lone Wolf* uniquely examines the conflicting dualities of contemporary spirituality.

Highlighting the absurdity of our increasingly commodified bids for happier realities and more peaceful minds, these two artists simultaneously touch on the deep human desire to sense personal significance and belonging within the bigger picture.

Commissioned by Cement Fondu, Sydney-based Min Wong presents a major new installation, *Lone Wolf*, 2022, which explores contemporary metaphysical narratives, esoteric practices, ritual and the relationship of spiritual guru and seeker. Wong's work is informed by her personal search for meaning through spirituality and fitness practices, and reflects diverse influences and lived experiences including Evangelistic Christianity in childhood and her Chinese father's ritualistic practices as a Taoist.

New York based artist Shana Moulton uses video, sculptural installation and performance to evoke a sometimes claustrophobic domestic world inhabited by her alter ego Cynthia, who suffers from hypochondria and agoraphobia. Through Cynthia's interactions with new age paraphernalia and animated encounters within her home and natural surroundings, Moulton paints a picture of a woman both trapped and comforted by the walls of domesticity; confined by phobias and anxieties yet freed through escapes from reality.

Feeling evermore poignant following the lockdowns of COVID-19, the artists present installations that channel common anxieties and desires relating to longing and belonging. In their works, familiar yet surreal scenarios are characterised by the objects and activities of everyday life, and reflect a shared drive to personal improvement that is deeply embedded in the day-to-day and normalised in conceptions of self. Relatable, humorous and profound, their works embrace a mundane desire for a better life that plays out in quests for meaning and validation.

Soul Seeker: Shana Moulton X Min Wong, an exhibition that explores the relationship between consumerism, self-care and the search for spirituality.

SOUL SEEKER: SHANA MOULTON X MIN WONG

SOUL SEEKER:
SHANA MOULTON X MIN WONG
13 AUGUST – 2 OCTOBER

PROJECT SPACE

SECOND GUEST WELLNESS
MONICA RANI RUDHAR, KIT BYLETT & RACHEL LEVINE
13 AUGUST – 4 SEPTEMBER

EMBODY
SIMONE DARCY
8 SEPTEMBER – 2 OCTOBER

ART STORE TAKEOVER

WITCH SHOP
KATY B PLUMMER
13 AUGUST – 2 OCTOBER

Featuring works by Katy B Plummer, Szymon Dorabalski, Zane Edwards, Sarah Jessica Carpark, Min Wong and more.

Contemporary Art's breakup with religion and hookup with capitalism has given it some anxious complexes about money and purity. *WITCH SHOP* is a magical gesture aimed at exorcising Art's weird money hangups from my practice, and offering other more sustainable models of making and distributing work. The objects in *WITCH SHOP* are small accessible pieces that operate as artworks, functional objects and witchy tools.

During *Soul Seeker: Shana Moulton X Min Wong*, our Art Store features a take over by Katy B Plummer.

WITCH SHOP
KATY B PLUMMER
13 AUGUST – 2 OCTOBER

ART STORE

Simone Darcy illuminates the Project Space with *Embody*, an installation of photographic portraits exploring the construction of self. Created using cameraless techniques within the darkroom, Darcy's imagery features glowing forms floating in darkness. Here, the female body is seen as both a vehicle of experience, and rendered beyond classification.

EMBODY
SIMONE DARCY
8 SEPTEMBER – 2 OCTOBER

Be welled into a new existence.

Second Guest Wellness is a wellness destination. Hold out your hand and let us present you with a touch from the past. In health, and in hope, we offer counter-alternative remedies informed by our practitioners' Chinese, Iraqi-Jewish, and Indian-Romanian roots. Our service is known to gently caress your ailments, awaken your sense of self, and align you with your inner garnish.

SECOND GUEST WELLNESS
MONICA RANI RUDHAR, KIT BYLETT & RACHEL LEVINE
13 AUGUST – 4 SEPTEMBER

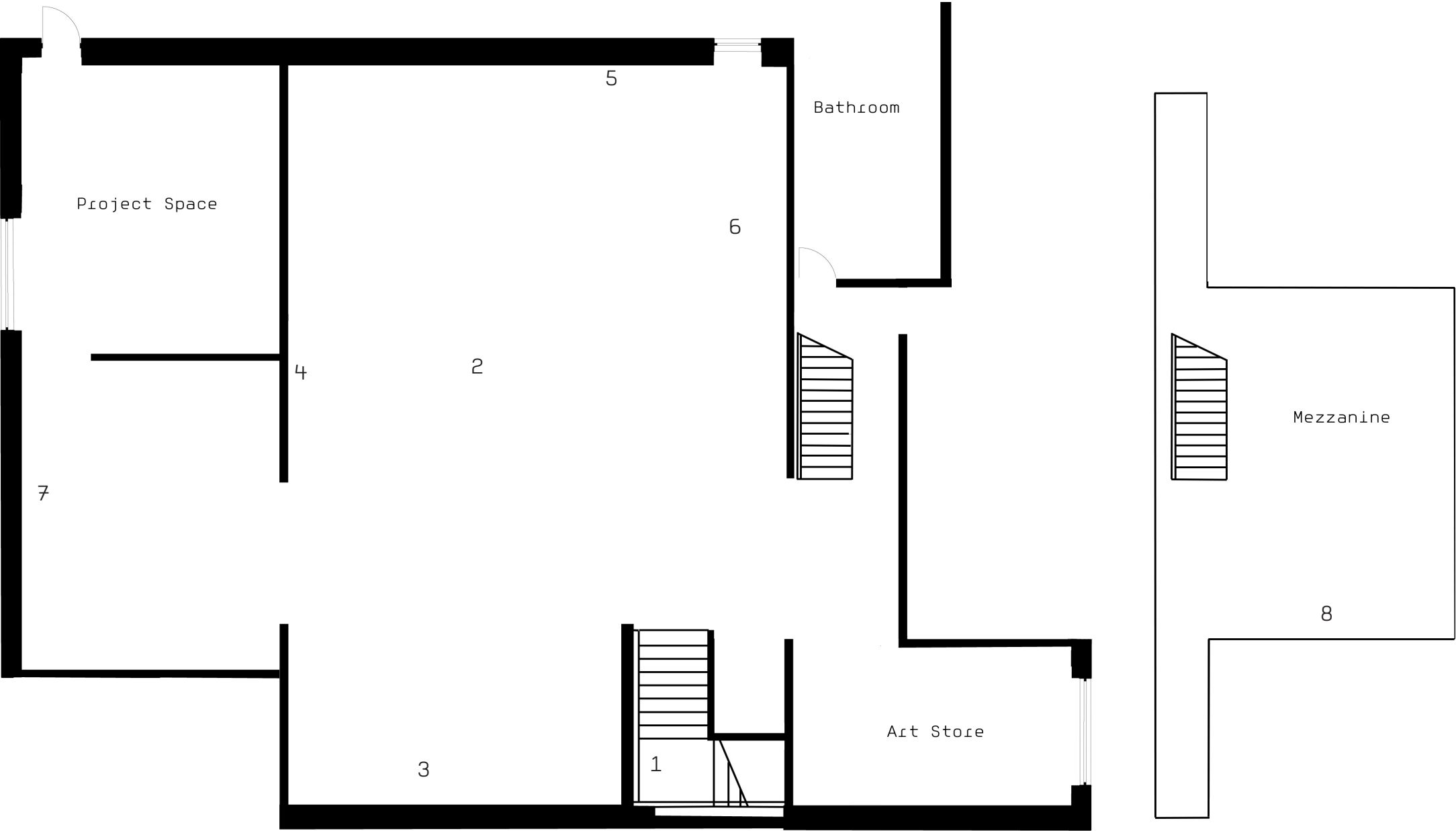
PROJECT SPACE

WE CARE WHAT YOU THINK!

COMPLETE OUR SURVEY

BE IN THE DRAW TO WIN 1 OF 5
\$200 ART STORE VOUCHERS





PUBLIC PROGRAMS

MAIN GALLERY

- 1. **MIN WONG & BRIE TRENERRY** *Away Team*, 2022
hologram.
Commissioned by Cement Fondu
- 2. **MIN WONG** *"Look in the mirror, THAT is the only competition*, 2022
steel, brass, paint, plants, ceramic, wire, crystals, books, rubber matting, ropes, leather, denim
Commissioned by Cement Fondu
- 3. **SHANA MOULTON** *Personal Steam Interface*, 2019
Single Channel video installation
- 4. **MIN WONG** *Bounce, bounce, bounce like you're on a motorcycle ride*, 2018
digital print on mirror stainless steel
- 5. **MIN WONG** *Miss Boobs*, 2022
neon, transformer
Commissioned by Cement Fondu
- 6. **MIN WONG** *Twin Flane*, 2022
tiles, Peace lily, plastic pot, grout
Commissioned by Cement Fondu
- 7. **SHANA MOULTON** *Inversion Therapy*, 2019
Single Channel video installation.

MEZZANINE

- 8. **SHANA MOULTON** *Whispering Pines*, 2018
Single Channel video.

Shana Moulton is represented by Galerie Gregor Staiger.
Min Wong is represented by Hugo Michell Gallery.
Brie Trenerry is represented by MARS Gallery, Melbourne.

Thank you to Brie Trenerry, Oliver Fity, Margo Hill-Smith, Jennifer Van Ratingen, Melissa Ford, Damien Piovesana, Leon Rutkowski Josephine Skinner, Anna May Kirk, Jackie De Lacy, Noah Bennett, Dennis Golding, Julien Bowman, Luke O'Donnell, James Lesjak-Atton, Mac Mansfield, Lewis Mosley, Kieran Boland, Karen Ann Donnachie, Christina Yang 3D Artist, Yang Hu 3D Artist.

Atmospherics | Alexandra Spence + Elia Bosshard
Sonic performance
Saturday 20 August, 6-8pm
RSVP required



KUDOS Takeover + First Thursdays Gallery Night
Thursday 1 September, 5-7pm

Digital Artist Talk | Shana Moulton & Min Wong
Released Friday 2 September

Second Guest Wellness | Project Space Activations
Saturday 3 September, 11am-4pm
RSVP required



Simone Darcy Project Space Launch | Flower Boy Live Performance
Saturday 10 September 3-5pm

Art Store Takeover | Katy B Plummer Witch Shop Activations
Saturday 1 October, all day

These projects are supported by the NSW Government through Create NSW.



CEMENT FONDU

02 9331 7775
HELLO@CEMENTFONDU.ORG
CEMENTFONDU.ORG
36 GOSBELL STREET
PADDINGTON NSW 2021