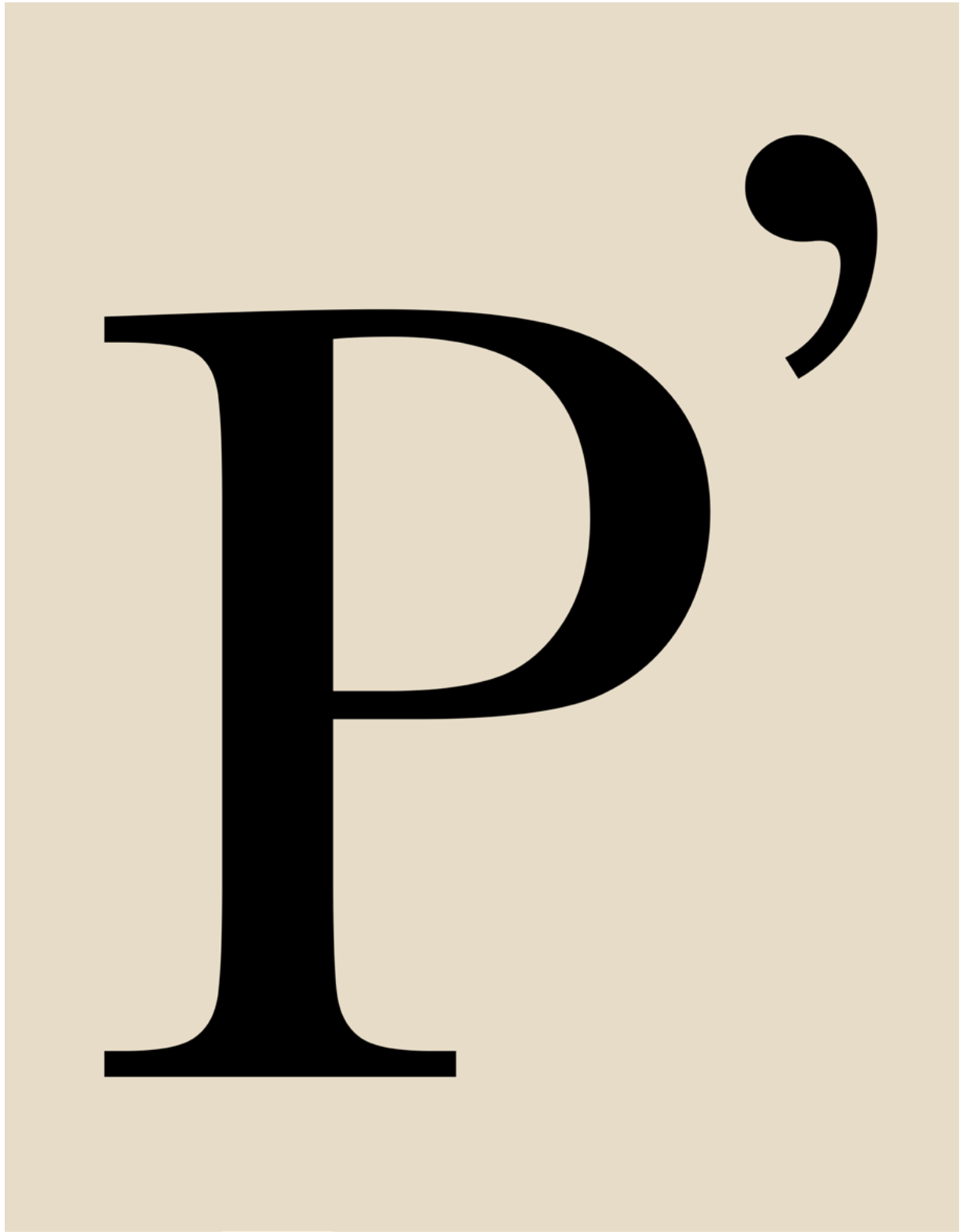


SIMIAN



P' for Perspective, Aug 27 – Oct 9, 2022

Inge Lehmann, Paul Pfeiffer, Tora Schultz, Sonja Ferlov Mancoba, Bradley Kronz,
Aia Sofia Coverley Turan, Kasper Hesselbjerg, Lea Porsager, Jens Axel Beck, Ester Fleckner,
Mads Westrup, Jens Hüls Funder, Bonnie Camplin, Dagmar Moldovanu, Amelie von Wulffen,
Michael E. Smith, Poul Gernes

The title “P’ for Perspective” is inspired by the Danish seismologist and geophysicist Inge Lehmann (1888-1993). Lehmann was unique; a passionate scientist whose work and private life merged into a singular and dedicated vision, focused on the reading and understanding of the forces of the inner Earth. Lehmann had a particular talent for examining seismographic registrations of earthquakes and movements from within the planet. Her readings were based as much on idiosyncratic intuition and personal interpretation, as they were on rational and categorical analyses. A different type of imagination was needed to challenge the status quo, and dream up a new understanding of the world.

into the planet, and by stretching our imagination and our technology into the cosmos. As we traverse the globe and its elements, we bind our individual bodies to its physical dimensions across widely dispersed coordinates and increments of time, while a globalised network can seem to exponentially bring us closer to a common unified mind and core.

In 1936 Lehmann published her seminal paper, simply titled “P”. The paper contained recordings of distant earthquakes with certain types of seismic waves, that travel through Earth and its core, so-called P-waves. Her readings showed anomalous characteristics in these, meaning that the waves reflected on a different and denser material structure than the liquid centre presumed to be the core of the planet. This eventually led to the groundbreaking discovery that Earth has a solid core inside a molten outer core. Essential knowledge that is now integrated in every calculation and model of our planet.

P’ for Perspective looks at shifting scientific viewpoints and new cultural attitudes in our contemporary time. A volatile era characterised by a massive and constant flow of information and knowledge sharing. In a cyclical manner, the exhibition considers how such input is initially generated, mediated, and absorbed, and how it might end up being reexamined and used anew. Through crisis and triumph, the mundane, the enlightened and the cosmic, artworks function as containers that capture and materialise the energy of a certain period or a mere fleeting moment in that time. They signify the presence of a conscious observation.

The exhibition portrays life in motion, as images, objects and time-lapses; by means of incorporating both microscopic and macroscopic and internal and external optics, by reaching into ourselves and

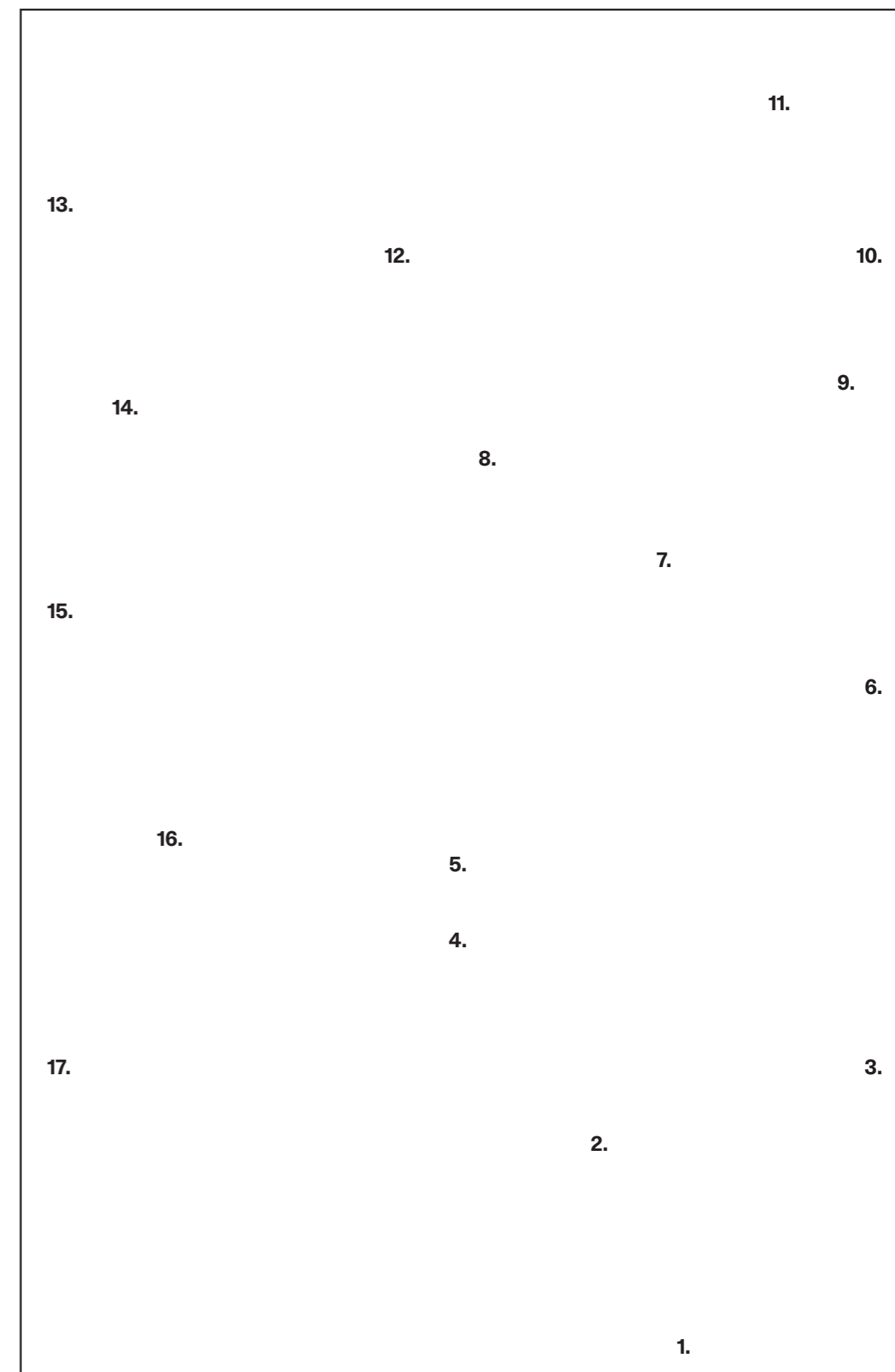


1. **Bonnie Camplin, *Spirseq Drawings*, 2018**
Felttip, pencil, pen on paper
2. ***Untitled*, 1926**
Vertical seismograph component
3. **Amelie von Wulffen, *I Am a Global Citizen and a Bonvivant*, 2017**
Oil on canvas
4. **Mads Westrup, *Skyer*, 2020**
Oil on paper
5. **Lea Porsager, *erogenous zOnes (generator. Organizer. destrOyer) XXIII*, 2022**
Sliced wind turbine blade
6. **Jens Hüls Funder, *School Ship*, 2021**
Shelving system, model ship, LEGO, dust
7. **Bradley Kronz, *Untitled (Camera)*, 2019**
Upside down Polaroid, camera, wood, tripod
8. **Aia Sofia Coverly Turan, *Manti*, 2020**
Bronze
9. **Jens Axel Beck, *Tools*, 2013**
Carved wooden broom and shovel
10. **Paul Pfeiffer, *Pier and Ocean*, 2004**
Digital video, 11.00 min.
11. **Poul Gernes, *Uden titel (Sten med bemalet rille) / Untitled (rock with painted cut groove)*, 1979**
Cut rock, enamel
12. **Dagmar Moldovanu, *Field Study (I)*, 2021**
Branded carpet

Field Study (IV), 2021
Branded carpet

Brainchild, 2021
Toy tank, raspberry pi, camera, 3d prints, various components

Prime Time, 2021
Real-time transmission from *Brainchild*
Raspberry pi, monitor
13. **Ester Fleckner, *Jeg navigerer i kollisioner (I navigate in collisions), nr. 12*, 2015**
Woodcut on paper
14. **Kasper Hesselbjerg, *Wavy Fries (Single)*, 2020**
CNC routed ash wood, steel
15. **Tora Schultz, *Divide-and-Conquer*, 2021**
Bent birch table with linoleum insert, designed by Magnus Olesen, produced at Botium
16. **Sonja Ferlov Mancoba, *Squelette de l'esprit (Structure of the Spirit)*, 1984**
Bronze, edition 3 of 6
17. **Michael E. Smith, *Untitled*, 2017**
Digital video, 04.33 min.



Simian is supported by:

By & Havn
New Carlsberg Foundation
The Obel Family Foundation
Danish Arts Foundation
Realdania Underværker
15. Juni Foundation
Aage og Johanne Louis-Hansen Foundation
City of Copenhagen
Sportgoods Foundation
Lizzi og Mogens Staal Foundation
Drost Foundation
Augustinus Foundation
A.P. Møller Foundation
Amager Vest Lokal Udval
Ørestad City Grundejerforening
Nørrebro Bryghus

Works courtesy of:

Galerie Barbara Weiss
C.C.C. Gallery
Carlier I Gebauer
Galerie Lars Friedrich
KOW
Avlskarl Gallery
Ebensperger
Christian Vind
Galleri Nils Stærk
The artists

Thank you:

Trine Dahl-Jensen, GEUS
Christian Vind
Nikolaj Stobbe
Kevin Malcolm

**Simian, Kay Fiskers Plads 17
2300 Copenhagen
Denmark (DK)**

**Opening hours during exhibitions:
Friday, Saturday, Sunday 12-17
or by appointment**