

PRUNELLA CLOUGH

*Machines for Seeing*

September 24 – November 19, 2022

Château Shatto is delighted to present *Machines for Seeing*, an exhibition of works by the late British artist Prunella Clough. The exhibition will open on Saturday, September 24 and will remain on view through November 19.

Prunella Clough (b. 1919 – d. 1999) is one of the most eminent painters to emerge from the United Kingdom in the second half of the 20th century. Across six decades, Clough advanced a constellation of quietly rigorous compositions which both inhabited and unwound the genre of observational painting. Frequently borrowing objects and articles from her immediate urbanscape, Clough maintained a treatment of the world which extracted semiotic, representational latency through whispering and punctilious abstraction.

Across this vast oeuvre, Clough foregrounded a preparatory and expository practice, often utilizing notational documents to capture and distill materials encountered in the world. These discursive units were later embedded and frayed within Clough's ocular fields, identifiable articles in turn suspended within distinctly non-referential visual material. This pictorial sleight-of-hand, and oscillatory motion between rhetorical and nonlexical, manifested within her work through the form of immense stylistic agility.

*Machines for Seeing* presents nine works by Clough, with a focus towards paintings produced in the final decades of her life. Each of these representations linger above a physical realm, suggestive of industry yet untethered to signification or depictive use value. In maintaining this analogous proximity to articles derived from the world, Clough's paintings become technological vessels unto themselves, "machines for seeing" as her peer Patrick Heron once suggested of the work. Through this consummation of semantics and playful, pictorial conjecture, Clough's paintings become irradiated with perceptual thoroughfare – in her suggestive compositions, one is directed to and held firm within the ineffable, phenomenological experiences of cognition and sensual machination alike.

Prunella Clough (b. 1919, London, United Kingdom; d. 1999, London, United Kingdom) studied at Chelsea School of Art, London. In 2007, Clough was the subject of a major retrospective at Tate Britain, London. Additional significant survey exhibitions include Kettle's Yard, Cambridge (1999); Camden Art Centre, London (1996); National Gallery of Modern Art, Edinburgh and Serpentine Gallery, London (1976); Graves

# CHATEAUSHATTO

London (1996); National Gallery of Modern Art, Edinburgh and Serpentine Gallery, London (1976); Graves Art Gallery, Sheffield (1972) and Whitechapel Gallery, London (1960).

Clough's work has been exhibited at museums and art centers internationally, including the Barbican Centre, London; Institute of Contemporary Art, London; Museum of Modern Art, New York; Nottingham Contemporary, Nottingham; Carnegie International, Carnegie Museum of Art, Pittsburgh, and São Paulo Biennale, Museo de Arte Moderna, São Paulo, among others.

Select public collections include: Arts Council of Great Britain; Art Gallery of Greater Victoria, Victoria, British Columbia; Art Gallery of New South Wales, Sydney; Cambridge Arts Trust; Graphische Sammlung, Albertina; The Irish Museum of Modern Art, Dublin; Museum of Modern Art, New York; Scottish National Gallery of Art, Edinburgh; Tate, London; The British Museum, London; Toledo Art Museum, Toledo; and Victoria & Albert Museum, London.

“Machines for Seeing”

PRUNELLA CLOUGH

Château Shatto

September 24 – November 19, 2022



PRUNELLA CLOUGH

*Trellis*

Oil on canvas

16.8 x 16.8 in / 43 x 43 cm.



PRUNELLA CLOUGH

*Broken Vane*, 1994

Oil on canvas

43.8 x 39.75 in / 111.5 x x 101 cm.



PRUNELLA CLOUGH

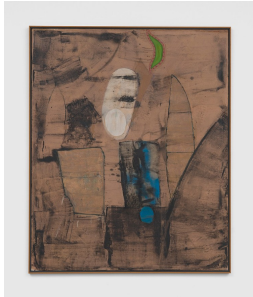
*Fancy Goods Two*, 1992

Oil on canvas

32 x 38 in / 81 x 96.5 cm.



PRUNELLA CLOUGH  
*Chinese Chequers*, 1989  
Oil on canvas  
39.75 x 50 in / 101 x 127 cm.



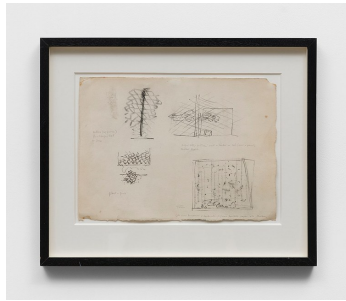
PRUNELLA CLOUGH  
*Forest Floor*, 1988  
Oil on canvas  
55.8 x 46 in / 142 x 117 cm



PRUNELLA CLOUGH  
*Untitled 2*, 1967  
Oil on canvas  
43.8 x 40.2 in / 111.5 x 102 cm.



PRUNELLA CLOUGH  
*Grid*, 1973  
Oil on canvas  
19 x 25.5 in / 48.5 x 65 cm.



PRUNELLA CLOUGH  
*Four Studies for Mesh Painting*, c. 1964  
Soft pencil on paper  
11 3/8 x 15 3/8 in / 29 x 40 cm



PRUNELLA CLOUGH  
*Six Studies for a Painting*, c. 1964  
Pencil, charcoal, oil pastel, staples and wash on paper  
9.8 x 16.8 in / 25.2 x 43 cm