



# Ding Shilun

Paradiso

GALERIE MARIA BERNHEIM



*Folktales have a strong didactic meaning and the stories I describe are often just an atmosphere, sometimes a reflection on the ridicule of contemporary situations.*

*Ding Shilun*

Galerie Maria Bernheim is pleased to announce the first solo show of Guangzhou-born, London-based artist Ding Shilun. Opening on September 9th, the show is entitled Paradiso.

Ding Shilun harnesses his heritage, current events and a global history of art to create large and detailed pictorial works depicting the absurdity in society and daily life. His unique concurrence of the mythological, the historical and the ordinary allow the visualized invention of an imaginary world with a representation of himself within our seemingly homogeneous society. In doing so he reflects on our contemporary moment where traditional values fight a progressive spirit, with both impacting our view of reference in equal measure. His work is rooted in pictorial references such as Gustav Klimt or Kai Althoff intertwined with interpretations of Chinese literature whilst creating an entire new set of contemporary mythologies. The nostalgia felt in Shilun's intricate works is not only related to an imaginary world, where figures and stories become one, but also in a longing for a world beyond ours. In this tour de force, Shilun presents canvases on a scale unparalleled, where he

succeeds in creating a truly unique narrative. Making use of his incredible technical abilities, he is able to channel influences such as Zhang Daqian's ethereal landscapes or harness playful elements from traditional Chinese painters such as Qi Baishi whilst creating an inimitable visual imagery. The multifarious textures superimposed with light brushworks force the viewer into a contemplative state whilst every painting seems to tend to the sublime.

Ding was born in 1998 in Guangzhou, China and is currently working between London and his hometown.

He recently graduated from the Royal College of Art, London, UK, and studied at the Slade School of Fine Art in London, UK, and at the Guangzhou Academy of Fine Arts, China.

For further information please contact:

+41 79 700 799 28 / [info@mariabernheim.com](mailto:info@mariabernheim.com)





Detail of **Ding Shilun**

*The Riddle*, 2022, Oil on canvas, 190 x 170 cm, 74 3/4 x 66 7/8 in, (SHILU00003)





Installation view of *Paradiso*, Ding Shilun, Galerie Maria Bernheim, Zurich, 2022





*Snake crawling, mandrill roaring on  
the hill, the ginkgo forest. Please  
leave quietly in the morning when  
they are asleep*

**Ding Shilun**

*The Riddle, 2022*

Oil on canvas

190 x 170 cm

74 3/4 x 66 7/8 in

(SHILU00003)





Ding Shilun, *The Truest Love and Sacrifice*, 2022, Oil on canvas, 170 x 190 cm, 66 7/8 x 74 3/4 in, (SHILU00017)



*Burning, a screaming; the suffering  
ignored; you fall; a deep hypnosis  
session*

**Ding Shilun**  
The Truest Love and Sacrifice, 2022  
Oil on canvas  
170 x 190 cm  
66 7/8 x 74 3/4 in  
(SHILU00017)







Installation view of Paradiso, Ding Shilun, Galerie Maria Bernheim, Zurich, 2022





*For me, the reason for most journeys or escapes is narcissism.*

**Ding Shilun**

*In Search of Apollo, 2022*

Oil on canvas

180 x 190 cm

70 7/8 x 74 3/4 in

(SHILU00018)





**Caravaggio**, *Narcissus*, 1597-1599,  
Oil on canvas, 110 cm x 92 cm, 43 x  
36 in



**John William Waterhouse**, *Echo and Narcissus*, 1903, Oil on canvas, 110  
cm x 190 cm, 43 x 74 in





Ding Shilun, *In Search of Apollo*, 2022, Oil on canvas, 180 x 190 cm, 70 7/8 x 74 3/4 in, (SHILU00018)





Installation view of *Paradiso*, Ding Shilun, Galerie Maria Bernheim, Zurich, 2022



*A dynasty  
A dagger dipped in poison  
The three sisters of fate crackle  
As the brothers swore their honor*

**Ding Shilun**  
Three Princes, 2022  
Oil on canvas  
180 x 160 cm  
70 7/8 x 63 in  
(SHILU00013)







detail of: Ding Shilun, *Three Princes*, 2022, Oil on canvas, 180 x 160 cm, 70 7/8 x 63 in, (SHILU00013)





*Tear up my remaining dignity for  
your extravaganza, I drift up high  
your self esteem*

**Ding Shilun**

Lady Silkworm, 2022

Oil on linen

200 x 240 cm

78 3/4 x 94 1/2 in

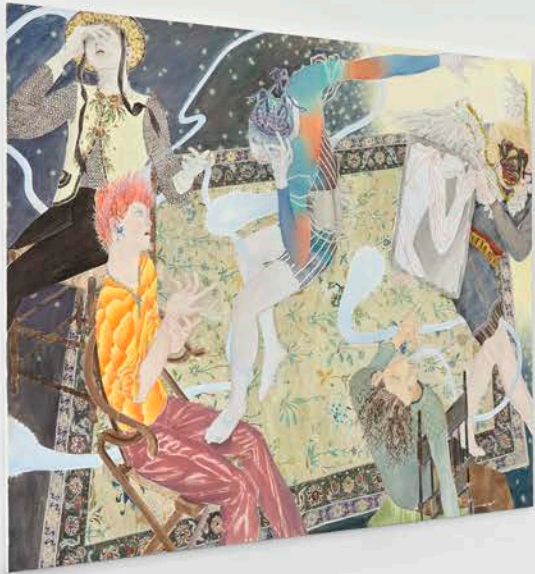
(SHILU00020)





Ding Shilun Lady Silkworm, 2022, Oil on linen, 200 x 240 cm, 78 3/4 x 94 1/2 in, (SHILU00020)





Installation view of *Paradiso*, Ding Shilun, Galerie Maria Bernheim, Zurich, 2022





Installation view of Paradiso, Ding Shilun, Galerie Maria Bernheim, Zurich, 2022





*You wanted treasure, three wishes,  
cannot keep a secret for a change*

**Ding Shilun**  
Jade Heist, 2022  
Oil on canvas  
160 x 180 cm  
63 x 70 7/8 in  
(SHILU00001)





Detail of: Ding Shilun, Jade Heist, 2022, Oil on canvas, 160 x 180 cm, 63 x 70 7/8 in, (SHILU00001)



*Lie on the couch voluntarily,  
fearing your mind is ill, seeking  
out any doctors available*

**Ding Shilun**  
Dream of the Blue Chamber, 2022  
Oil on linen  
200 x 240 cm  
78 3/4 x 94 1/2 in  
(SHILU00021)







Ding Shilun, Dream of the Blue Chamber, 2022, Oil on linen, 200 x 240 cm, 78 3/4 x 94 1/2 in, (SHILU00021)



*To reduce your education, I speak like the  
common old man, incompetent, yet is still  
fear, your blooded hands.*

**Ding Shilun**  
The Excursion, 2022  
Oil on canvas  
160 x 160 cm  
63 x 63 in  
(SHILU00019)







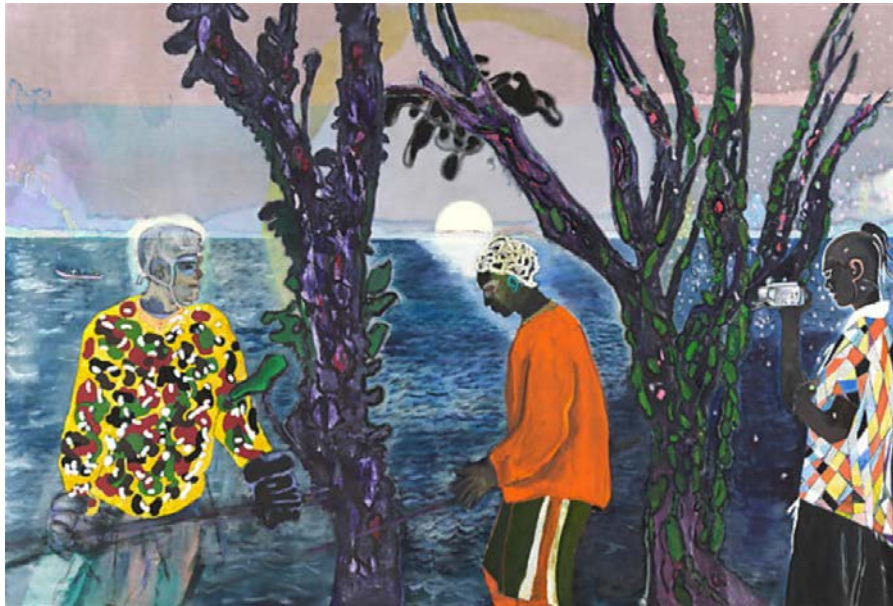
Ding Shilun, *The Excursio*, 2022, Oil on canvas, 160 x 160 cm, 63 x 63 in, (SHILU00019)





Installation view of *Paradiso*, Ding Shilun, Galerie Maria Bernheim, Zurich, 2022





**Peter Doig**, *Two Trees*, 2017, Oil on linen, 240 x 355 cm, 94 x 140 in



**Gustav Klimt**, *Death and Life*, 1910-1915, Oil on canvas, 178 cm x 198 cm, 70 x 78 in





Kai Althoff, Untitled, 2018





**Ding Shilun**

D72 (Uninvited Guest), 2022  
Watercolor and gouache on  
paper  
31 x 23 cm  
12 1/4 x 9 in  
(SHILU00030)



**Ding Shilun**

D70 (Gold Store), 2022  
Watercolor on paper  
31 x 23 cm  
12 1/4 x 9 in  
(SHILU00026)



**Ding Shilun**

D16 (Soup), 2021  
Watercolor on paper  
31 x 23 cm  
12 1/4 x 9 in  
(SHILU00023)





Detail of: **Ding Shilun**, D72 (Uninvited Guest), 2022, Watercolor and gouache on paper, 31 x 23 cm, 12 1/4 x 9 in, (SHILU00030)





**Ding Shilun**

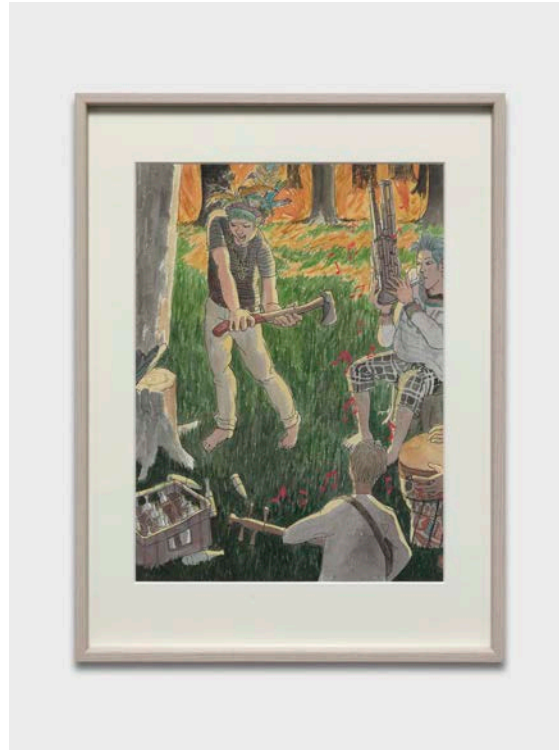
D13 (Hold The Tears), 2021

Watercolor on paper

31 x 23 cm

12 1/4 x 9 in

(SHILU00022)



**Ding Shilun**

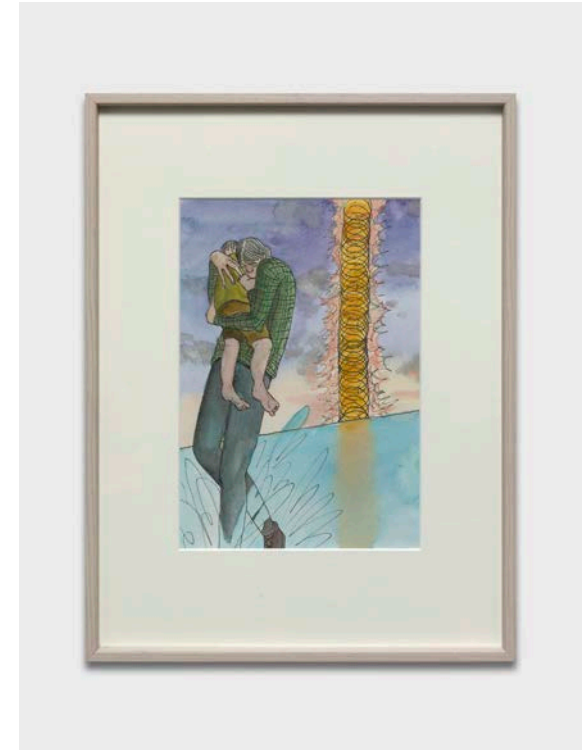
D71 (Party), 2022

Watercolor on paper

31 x 23 cm

12 1/4 x 9 in

(SHILU00029)



**Ding Shilun**

D41 (Sunset), 2021

Watercolor on paper

26 x 18 cm

10 1/4 x 7 1/8 in

(SHILU00028)





Detail of: **Ding Shilun**, D71 (Party), 2022, Watercolor on paper, 31 x 23 cm, 12 1/4 x 9 in, (SHILU00029)





**Ding Shilun**  
D37 (Dragon), 2021  
Watercolor on paper  
26 x 18 cm  
10 1/4 x 7 1/8 in  
(SHILU00025)



**Ding Shilun**  
D22 (Tutorial), 2021  
Watercolor on paper  
26 x 18 cm  
10 1/4 x 7 1/8 in  
(SHILU00024)



**Ding Shilun**  
D31 (Angel), 2021  
Watercolor on paper  
18 x 26 cm  
7 1/8 x 10 1/4 in  
(SHILU00027)

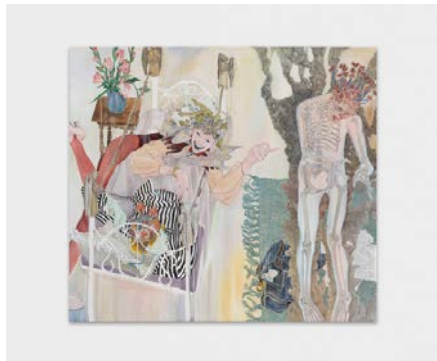


# GALERIE MARIA BERNHEIM



**Ding Shilun**

The Riddle, 2022  
Oil on canvas  
190 x 170 cm  
74 3/4 x 66 7/8 in  
(SHILU00003)



**Ding Shilun**

The Truest Love and Sacrifice, 2022  
Oil on canvas  
170 x 190 cm  
66 7/8 x 74 3/4 in  
(SHILU00017)



**Ding Shilun**

In Search of Apollo, 2022  
Oil on canvas  
180 x 190 cm  
70 7/8 x 74 3/4 in  
(SHILU00018)





**Ding Shilun**

Three Princes, 2022

Oil on canvas

180 x 160 cm

70 7/8 x 63 in

(SHILU00013)



**Ding Shilun**

Lady Silkworm, 2022

Oil on linen

200 x 240 cm

78 3/4 x 94 1/2 in

(SHILU00020)



**Ding Shilun**

Jade Heist, 2022

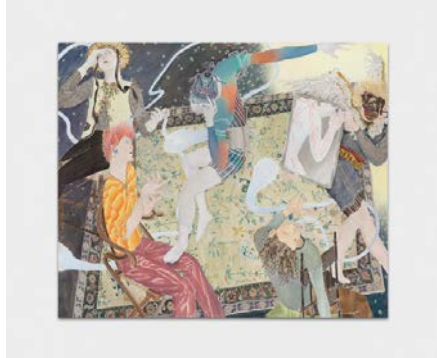
Oil on canvas

160 x 180 cm

63 x 70 7/8 in

(SHILU00001)





**Ding Shilun**

*Dream of the Blue Chamber*, 2022

Oil on linen

200 x 240 cm

78 3/4 x 94 1/2 in

(SHILU00021)



**Ding Shilun**

*The Excursion*, 2022

Oil on canvas

160 x 160 cm

63 x 63 in

(SHILU00019)



**Ding Shilun**

*D72 (Uninvited Guest)*, 2022

Watercolor and gouache on paper

31 x 23 cm

12 1/4 x 9 in

(SHILU00030)





**Ding Shilun**

D70 (Gold Store), 2022

Watercolor on paper

31 x 23 cm

12 1/4 x 9 in

(SHILU00026)



**Ding Shilun**

D16 (Soup), 2021

Watercolor on paper

31 x 23 cm

12 1/4 x 9 in

(SHILU00023)



**Ding Shilun**

D13 (Hold The Tears), 2021

Watercolor on paper

31 x 23 cm

12 1/4 x 9 in

(SHILU00022)





**Ding Shilun**

D71 (Party), 2022  
Watercolor on paper  
31 x 23 cm  
12 1/4 x 9 in  
(SHILU00029)



**Ding Shilun**

D41 (Sunset), 2021  
Watercolor on paper  
26 x 18 cm  
10 1/4 x 7 1/8 in  
(SHILU00028)



**Ding Shilun**

D37 (Dragon), 2021  
Watercolor on paper  
26 x 18 cm  
10 1/4 x 7 1/8 in  
(SHILU00025)





**Ding Shilun**

D22 (Tutorial), 2021

Watercolor on paper

26 x 18 cm

10 1/4 x 7 1/8 in

(SHILU00024)



**Ding Shilun**

D31 (Angel), 2021

Watercolor on paper

18 x 26 cm

7 1/8 x 10 1/4 in

(SHILU00027)



1998 Born in Guangzhou, China  
Lives and works between London and Guangzhou

## **EDUCATION**

2020-2022  
MA Painting, Royal College of Art, July 2022

2019  
Exchange programme, Slade School of Fine Art, UCL,  
London

2016-2020  
BA Painting, Guangzhou Academy of Fine Art, China

## **SELECTED EXHIBITIONS**

2022  
Solo show, Galerie Maria Bernheim, Zurich,  
Switzerland

2021  
"Glory", Making Space, Guangzhou, China  
"ABNORMAL", LPS Gallery, Guangzhou, China  
RCA WIP SHOW, Royal College of Art, London, UK

2020  
GAFA Degree Show, Guangzhou, China  
"Da Vinci Talk: Wait and Hope", Art Week Auckland,  
Bruce Mason Centre, Takapuna, New Zealand  
"The Choice Of The Graduate Star 2020", Boxes Art  
Space, OCAT Shenzhen, China  
"INHOO MANUFACTURE", GAFA South Gallery,

Guangzhou, China  
"Grass Up/Down", LPS Gallery, Guangzhou, China

2019  
"The Youth Project of the National Art  
Foundation", Zheng Guan Art Museum, Beijing/  
Shenzhen/Xi'an, China  
inArt Fall Fair, inArt Gallery, Beijing, China

2018  
"Original Phase 4" Joint Exhibition of the  
second Studio of the Department of Oil  
painting of Guangzhou Academy of Fine Arts,  
the second Studio Hall of the Department of  
Oil painting, Guangzhou, China  
"Mei 2018", Shanghai Himalayan Art Museum,  
Shanghai, China

2017  
"Spirit of the City", Great Exhibition Hall of  
St. Petersburg Artists Association, Russia



# GALERIE MARIA BERNHEIM

## **MARIA BERNHEIM**

maria@mariabernheim.com  
+41 79 700 79 28

## **PAULINE RENEVIER**

pauline@mariabernheim.com  
+41 79 726 06 65

---

Rämistrasse 31, 8001 Zurich, Switzerland

+41 79 700 79 28 - [www.mariabernheim.com](http://www.mariabernheim.com)