

An abstract painting featuring several faces rendered in a stylized, expressive manner. The faces are composed of various colors including green, yellow, orange, pink, and purple, with prominent black outlines for eyes and mouths. The background is a mix of light and dark tones, creating a sense of depth and movement. The overall style is reminiscent of modernist or expressionist art.

ROBY DWI ANTONO

SAMANTHA

ANAT EBGI

# ANAT EBGI

**ROBY DWI ANTONO**

***Samantha***

**October 29 - December 10, 2022**

**2660 S La Cienega Blvd**

Anat Ebgi is pleased to announce *Samantha*, a solo exhibition by Roby Dwi Antono on view at 2660 S La Cienega Blvd, October 29 - December 10, 2022. This is the artist's first solo exhibition with the gallery. An opening reception will take place Saturday, October 29 from 5 - 7pm.

*Samantha* consists of ten new paintings shown alongside a selection of works on paper. Returning to a state of childlike honesty and spontaneity are both core thematic of the works in *Samantha*. The title of the exhibition is taken from Spike Jonze's science fiction romantic drama *HER* (2013). In this film, the sensitive protagonist Theodore falls in love with his charming, artificially intelligent virtual assistant "Samantha," who reveals that she gave herself the name because she simply liked "the sound of it." Antono's way of working is similarly immediate, painting directly on the unprimed surfaces—his works are like cave paintings, simple expressions of desire as incantation. The repeated glyph-like subjects raise questions about heroism, pop culture, and nostalgia.

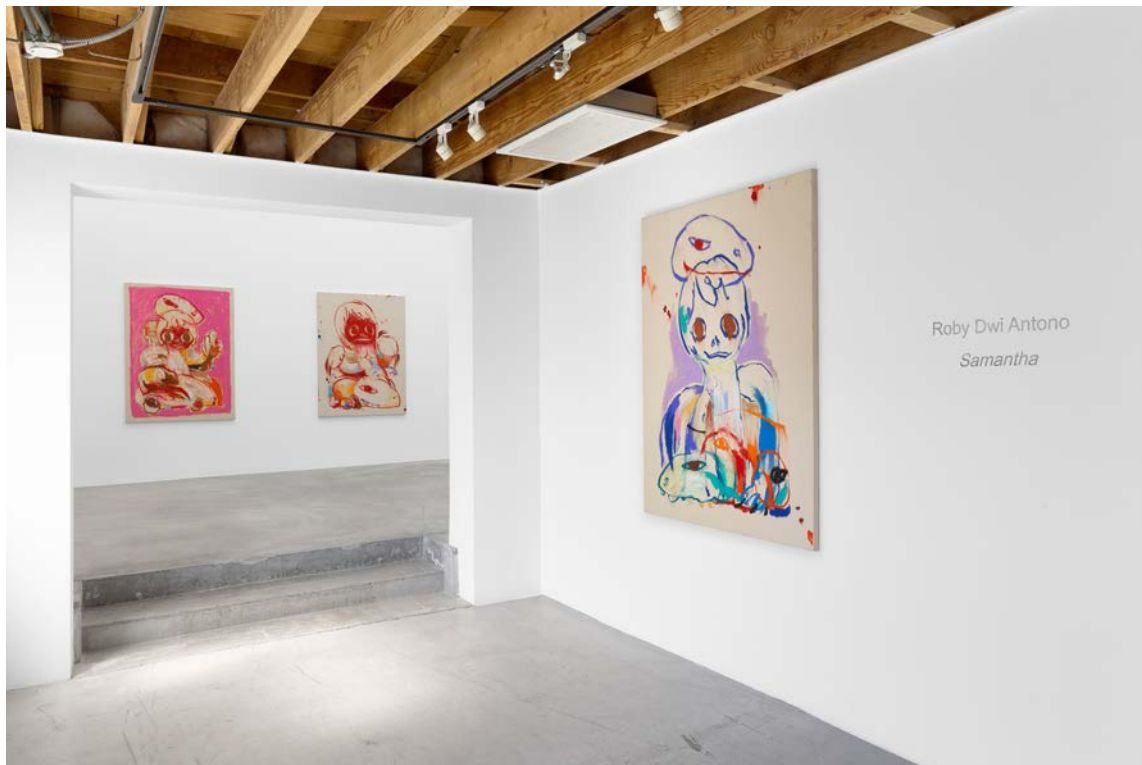
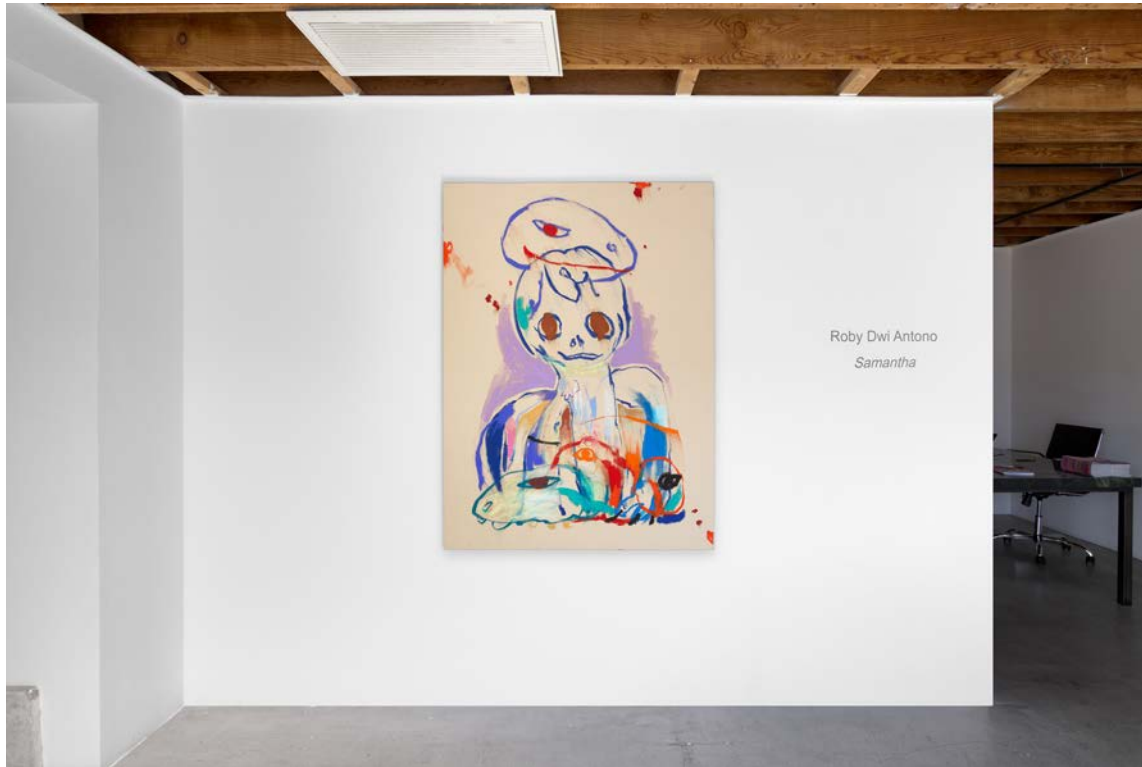
A self-taught painter, Antono's works for this exhibition are rendered with loose, expressive linework, primarily in oil pastel, pigment sticks, and pencil. Antono depicts wide-eyed children and dinosaur-like animals with a scrawled and cartoonish freedom. He captures a flatness and naiveté associated with children's drawing and his subjects echo raw or primal emotional states such as joy, rage, and sadness. The artist thoughtfully contends with ideas of representation in these works as many of the compositions seem to dissolve into pure line and color—painterly gestures of innocence and playfulness.

His boldly colored characters, outlined and embellished with premixed reds, greens, and blues push to the foreground of the picture plane. These latest works in *Samantha* make use of blank, raw canvas and the silent world of these characters continues, in pauses and margins. These breaks shape the field—emphasizing rhythm, space, and the delicate cadence of the artist's hand, highlighting sensual, spontaneous, and emotional manifestations of our humanity. Out of the linear flow of time and logical thinking, Antono's characters occupy places of humor and harmony, drawing out each other's light.

**Roby Dwi Antono** (b. 1990 Semarang, Indonesia) has been featured both in Indonesia and internationally in numerous solo and group exhibitions including presenting work at the 2017 Yogyakarta Biennale; Nanzuka Underground, Tokyo, Japan; and Gallery Droste, Paris, France. Antono lives and works in Yogyakarta, Indonesia.

# ANAT EBGI

Roby Dwi Antono, *Samantha*, Solo exhibition, Anat Ebgi, Los Angeles, CA  
October 29 - December 10, 2022



# ANAT EBGI



# ANAT EBGI



# ANAT EBGI



# ANAT EBGİ



**ANAT EBGİ**



**Roby Dwi Antono**  
***Heavy Burden, 2022***

Pigment sticks, oil pastel, pencil on reverse canvas  
150 x 110 cm [HxW] (59 1/16" x 43 5/16")  
#RDA1003



**ANAT EBGİ**



**Roby Dwi Antono**

***Red Ridoron, 2022***

Pigment sticks, oil pastel, pencil on reverse canvas

150 x 110 cm [HxW] (59 1/16" x 43 5/16")

#RDA1013



**Roby Dwi Antono**

***Man of The Match, 2022***

Pigment sticks, oil pastel, pencil on reverse canvas  
150 x 110 cm [HxW] (59 1/16" x 43 5/16")  
#RDA1011



Roby Dwi Antono *Man of The Match*, 2022 (Detail)



**Roby Dwi Antono**

***Prepare for Battle, 2022***

Pigment sticks, oil pastel, pencil on reverse canvas  
150 x 110 cm [HxW] (59 1/16" x 43 5/16")  
#RDA1010



**Roby Dwi Antono**

***The Two-Headed Dinosaur, 2022***

Pigment sticks, oil pastel, pencil on reverse canvas  
150 x 110 cm [HxW] (59 1/16" x 43 5/16")  
#RDA1009



Roby Dwi Antono *The Two-Headed Dinosaur*, 2022 (Detail)

**ANAT EBGI**



**Roby Dwi Antono**

***A Stranger Among Us, 2022***

Pigment sticks, oil pastel, pencil on reverse canvas  
150 x 110 cm [HxW] (59 1/16" x 43 5/16")  
#RDA1008



**Roby Dwi Antono**  
***Imperfect Cell, 2022***

Pigment sticks, oil pastel, pencil on reverse canvas  
150 x 110 cm [HxW] (59 1/16" x 43 5/16")  
#RDA1007





Roby Dwi Antono *Imperfect Cell*, 2022 (Detail)

**ANAT EBGİ**



**Roby Dwi Antono**

***Long Neck Dino, 2022***

Pigment sticks, oil pastel, pencil on reverse canvas  
150 x 110 cm [HxW] (59 1/16" x 43 5/16")  
#RDA1006

# ANAT EBGİ



**Roby Dwi Antono**

***Derby, 2022***

Pigment sticks, oil pastel, pencil on reverse canvas  
150 x 110 cm [HxW] (59 1/16" x 43 5/16")  
#RDA1005



Roby Dwi Antono *Derby*, 2022 (Detail)

**ANAT EBGI**



**Roby Dwi Antono**

***Grumpy Girl*, 2022**

Pigment sticks, oil pastel, pencil on reverse canvas  
150 x 110 cm [HxW] (59 1/16" x 43 5/16")  
#RDA1004

**ANAT EBGİ**



**Roby Dwi Antono**

***Dissensions, 2022***

Oil pastels on paper

Framed 14 ¼" x 11" x 1 ½" [HxWxD] (36.2 x 27.94 x 3.81 cm); 29 x 21 cm [HxW] (11 ⅜" x 8 ⅝")  
#RDA1015

**ANAT EBGİ**



**Roby Dwi Antono**

***Love Me Do, 2022***

Oil pastels on paper

Framed 14 ¼" x 11" x 1 ½" [HxWxD] (36.2 x 27.94 x 3.81 cm); 29 x 21 cm [HxW] (11 13/32" x 8 9/32")

#RDA1016

**ANAT EBGİ**



**Roby Dwi Antono**

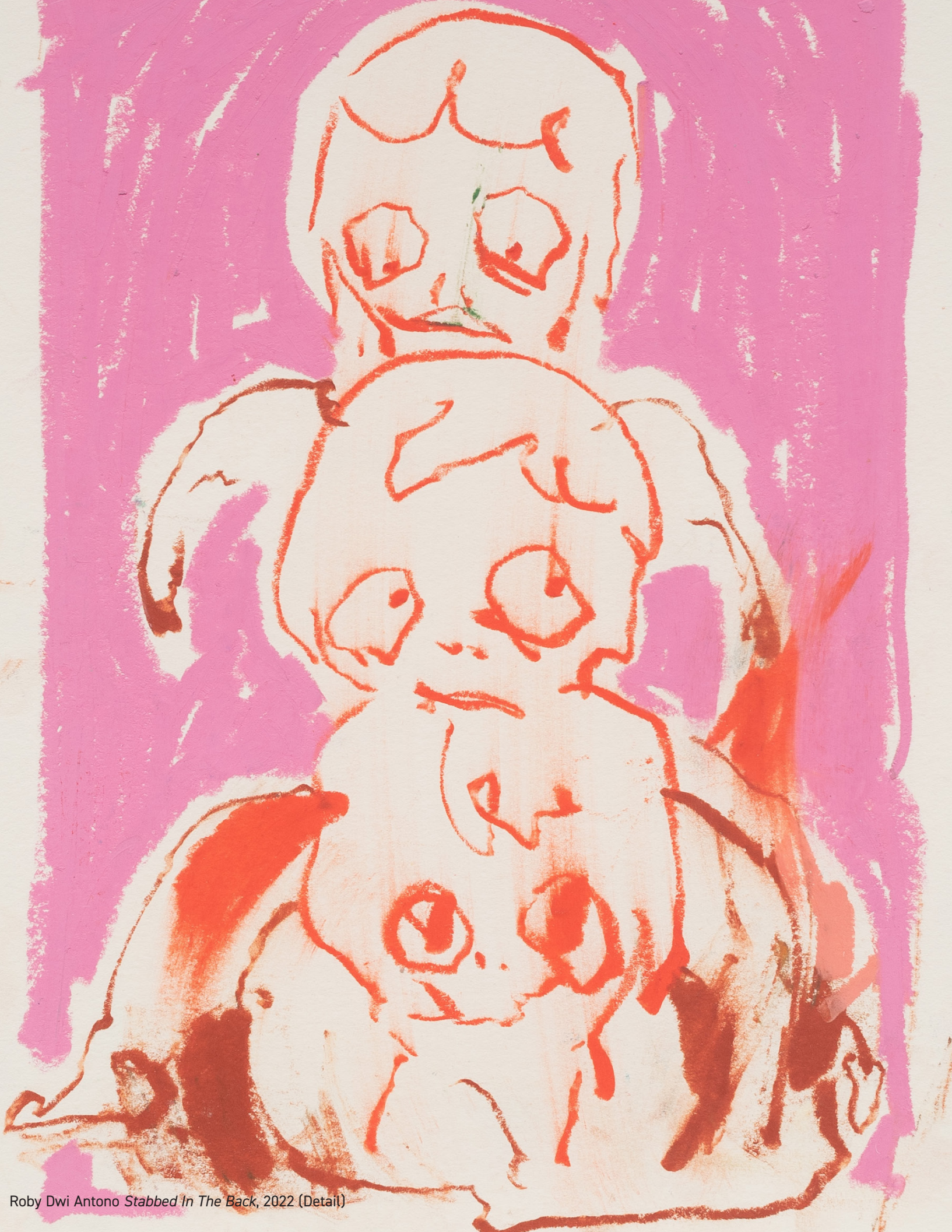
***Stabbed In The Back, 2022***

Oil pastels on paper

Framed 14 ¼" x 11" x 1 ½" [HxWxD] (36.2 x 27.94 x 3.81 cm); 29 x 21 cm [HxW] (11 13/32" x 8 9/32")

#RDA1017





Roby Dwi Antono *Stabbed In The Back*, 2022 (Detail)

# ANAT EBGİ



**Roby Dwi Antono**

***The Boxer, 2022***

Oil pastels on paper

Framed 14 ¼" x 11" x 1 ½" [HxWxD] (36.2 x 27.94 x 3.81 cm); Unframed 11 ½" x 8 ¼" [HxW] (29.21 x 20.96 cm)

#RDA1020



**Roby Dwi Antono**

***A Warm Hug, 2022***

Oil pastels on paper

Framed 14 ¼" x 11" x 1 ½" [HxWxD] (36.2 x 27.94 x 3.81 cm); Unframed 11 ½" x 8 ¼" [HxW] (29.21 x 20.96 cm)

#RDA1021



**Roby Dwi Antono**  
***The Last Warrior, 2022***

Oil pastels on paper  
Framed 14 ¼" x 11" x 1 ½" [HxWxD] (36.2 x 27.94 x 3.81 cm); Unframed 11 ½" x 8 ¼" [HxW] (29.21 x 20.96 cm)  
#RDA1023



**Roby Dwi Antono**

***Riding in Shoes, 2022***

Oil pastels on paper

Framed 14 ¼" x 11" x 1 ½" [HxWxD] (36.2 x 27.94 x 3.81 cm); Unframed 11 ½" x 8 ¼" [HxW] (29.21 x 20.96 cm)

#RDA1024

# ANAT EBGİ



**Roby Dwi Antono**  
***Lemon Yellow, 2022***

Oil pastels on paper

Framed 14 ¼" x 11" x 1 ½" [HxWxD] (36.2 x 27.94 x 3.81 cm); Unframed 11 ½" x 8 ¼" [HxW] (29.21 x 20.96 cm)

#RDA1025



**Roby Dwi Antono**  
***Red Head Racer, 2022***

Oil pastels on paper  
Framed 14 ¼" x 11" x 1 ½" [HxWxD] (36.2 x 27.94 x 3.81 cm); Unframed 11 ½" x 8 ¼" [HxW] (29.21 x 20.96 cm)  
#RDA1026

**ANAT EBGİ**



**Roby Dwi Antono**  
***The Green and Blue Head, 2022***

Oil pastels on paper

Framed 14 ¼" x 11" x 1 ½" [HxWxD] (36.2 x 27.94 x 3.81 cm); Unframed 11 ½" x 8 ¼" [HxW] (29.21 x 20.96 cm)  
#RDA1018





**ANAT EBGİ**

6150 Wilshire Blvd  
Los Angeles, CA 90048  
+1 (310) 272 3418  
[www.anatebgi.com](http://www.anatebgi.com)

---

4859 Fountain Ave  
Los Angeles, CA, 90029  
+1 (323) 407 6806  
[www.anatebgi.com](http://www.anatebgi.com)