

Micheline Szwajcer

Jos de Gruyter & Harald Thys

Dépression à Dortmund

opening 1 April 2021

exhibition from 2 April until 29 May 2021

Twenty-two dolls were made in 2018-2019 according to the Warsprong principle. Some dolls date from the early 18th and 19th century, others from the 20th century. Some dolls are still alive.

Fourteen of these dolls were equipped with electric engines that enable them to perform repetitive actions. The dolls traveled from Brussels to Venice for a major exhibition. In 2020 they were shipped to Busan, a port city in South Korea, where they were displayed in a gigantic cage. On their return to Belgium in 2021, each of them was photographed in a studio by Kristien Daem. For this, an industrial LED lamp, the so-called Skypanel S60-C with a power of 6000 watts, was used and a technical camera with a digital back of Japanese-Danish make. From April 1 on, 16 prints will be shown. These are realized by a specialized company in Kontich. They have recently started working according to the UV inkjet printing principle. For this they purchased a VUTEK QS 3220 in America.

opening on 01.04.2021 2 - 9 pm
exhibition from 04.04 until 29.05.2021
open tuesday, thursday, friday
from 10 am - 6 pm
and by appointment

Micheline Szwajcer
Verlatstraat 14, 2000 Antwerp
tel +32 (0)3 237 11 27
mob +32 475 44 11 27
contact@gms.be www.gms.be



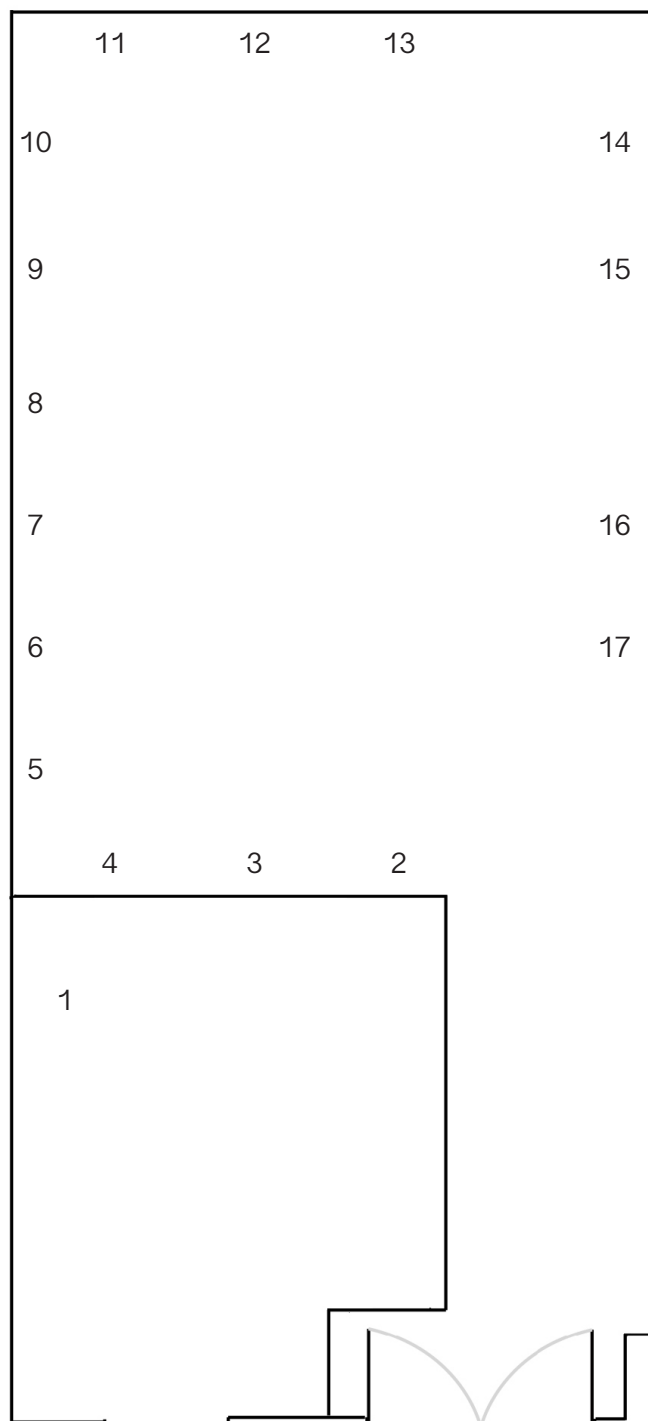
opening on 01.04.2021 2 - 9 pm
 exhibition from 04.04 until 29.05.2021
 open tuesday, thursday, friday
 from 10 am - 6 pm
 and by appointment

Micheline Szwajcer
 Verlatstraat 14, 2000 Antwerp
 tel +32 (0)3 237 11 27
 mob +32 475 44 11 27
 contact@gms.be www.gms.be



opening on 01.04.2021 2 - 9 pm
 exhibition from 04.04 until 29.05.2021
 open tuesday, thursday, friday
 from 10 am - 6 pm
 and by appointment

Micheline Szwajcer
 Verlatstraat 14, 2000 Antwerp
 tel +32 (0)3 237 11 27
 mob +32 475 44 11 27
 contact@gms.be www.gms.be



1 *The Fool*, 2019

mixed media. 3D printed heads coated in plaster, metal, fabric, clothes
220 x 124 x 116 cm

2 *Ilse Koch*, 2021

UV-print on 3 mm dibond; 85 x 65 cm

3 *Reverent Simons*, 2021

UV-print on 3 mm dibond; 85 x 65 cm

4 *Kristinus Oplinus*, 2021

UV-print on 3 mm dibond; 85 x 65 cm

5 *Irmgard Speck*, 2021

UV-print on 3 mm dibond; 85 x 65 cm

6 *Madame Legrand*, 2021

UV-print on 3 mm dibond; 85 x 65 cm

7 *De Belder Guido*, 2021

UV-print on 3 mm dibond; 85 x 65 cm

8 *The Swiss*, 2021

UV-print on 3 mm dibond; 85 x 65 cm

9 *De Lantaarn*, 2021

UV-print on 3 mm dibond; 85 x 65 cm

10 *The Knife-Grinder of Wexford*, 2021

UV-print on 3 mm dibond; 85 x 65 cm

11 *Jacobina Bienebol*, 2021

UV-print on 3 mm dibond; 85 x 65 cm

12 *Sateri*, 2021

UV-print on 3 mm dibond; 85 x 65 cm

13 *The Fool*, 2021

UV-print on 3 mm dibond; 85 x 65 cm

14 *Rocco Swenty Di Malaga*, 2021

UV-print on 3 mm dibond; 85 x 65 cm

15 *Lathgreta Toft*, 2021

UV-print on 3 mm dibond; 85 x 65 cm

16 *The Rat Woman*

UV-print on 3 mm dibond; 85 x 65 cm

17 *Ernst Wollemenger*, 2021

UV-print on 3 mm dibond; 85 x 65 cm

opening on 01.04.2021 2 - 9 pm
exhibition from 04.04 until 29.05.2021
open tuesday, thursday, friday
from 10 am - 6 pm
and by appointment

Micheline Szwajcer
Verlatstraat 14, 2000 Antwerp
tel +32 (0)3 237 11 27
mob +32 475 44 11 27
contact@gms.be www.gms.be