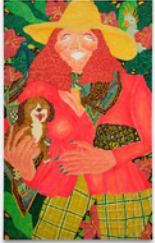


BORTOLAMI

Koichi Sato, Susumu Kamijo, Jonas Wood
Artist City/Las Vegas
18 November 2022 — 26 February 2023



Koichi Sato
Astral Traveling, 2022
Acrylic and oil on canvas
76 x 46 in
(188 x 116.8 cm)
(KS1005)



Jonas Wood
Small Japanese Garden with Brick Wall, 2022
Signed, titled and dated on verso
Oil and acrylic on canvas
32 x 30 in
(81.3 x 76.2 cm)
(JW0001)



Susumu Kamijo
Came So Far, 2022
Acrylic, vinyl paint, graphite on canvas
66 x 55 in
(167.6 x 139.7 cm)
(SK1002)



Koichi Sato
Phases of Reality, 2022
Acrylic and oil on canvas
72 x 60 in
(182.9 x 152.4 cm)
(KS1010)



Susumu Kamijo
Hunt Together, 2022
Acrylic, vinyl paint, graphite on canvas
55 x 66 in
(139.7 x 167.6 cm)
(SK1001)



Koichi Sato
gap between reality and expectation, 2022
Acrylic and oil on canvas
74 x 46 in
(188 x 116.8 cm)
(KS1006)



Koichi Sato
Band Of Gold, 2022
Acrylic and oil on canvas
72 x 60 in
(182.9 x 152.4 cm)
(KS1009)



Koichi Sato
The Wild and Peaceful Pocket, 2022
Acrylic and oil on canvas
74 x 46 in
(188 x 116.8 cm)
(KS1008)

BORTOLAMI



Koichi Sato
Smily, Lonely happy person, 2022
Acrylic, and oil on canvas
74 x 46 in
(188 x 116.8 cm)
(KS1004)



Koichi Sato
Beginning Of The End, 2022
Acrylic and oil on canvas
72 x 60 in
(182.9 x 152.4 cm)
(KS1013)



Koichi Sato
piano man, 2022
Acrylic and oil on canvas
24 x 20 in
(61 x 50.8 cm)
(KS1011)



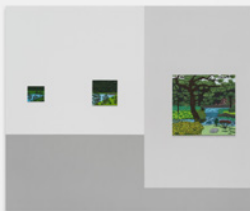
Koichi Sato
lovely bean, 2022
Acrylic and oil on canvas
24 x 20 in
(61 x 50.8 cm)
(KS1012)



Susumu Kamijo
Hard Shell, 2022
Acrylic, flashe vinyl paint, and
graphite on canvas
55 x 66 in
(139.7 x 167.6 cm)
(SK1000)



Koichi Sato
We, All, Victims, 2022
Acrylic and oil on canvas
74 x 46 in
(188 x 116.8 cm)
(KS1007)



Jonas Wood
*Interior with Japanese
Landscapes, 2022*
Signed, titled and dated on verso
Oil and acrylic on canvas
106 x 128 x 1 3/4 in
(269.2 x 325 x 4.4 cm)
(JW0002)



Jonas Wood
*Japanese Landscape Interior #1,
2022*
Gouache, ink and colored pencil
on paper
14 1/2 x 17 1/2 in
(36.8 x 44.5 cm)
(JW0003)