

# CHAPTER NY

Antonia Kuo & Pauline Shaw

January 6 – February 18, 2023



**Pauline Shaw**

*Taw, 2022*

Felted wool, cotton scrim, glass

69 1/2 x 40 x 2 1/2 in

(176.5 x 101.6 x 6.3 cm)



**Antonia Kuo**

*Dowager, 2022*

Ceramic, wood

42 x 15 x 15 in

(106.7 x 38.1 x 38.1 cm)



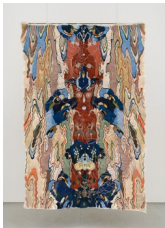
**Antonia Kuo**

*Narcissus, 2022*

Unique chemical painting on light-sensitive silver gelatin paper on wood panel in welded aluminum frame

55 x 95 x 2 1/4 in

(139.7 x 241.3 x 5.7 cm) (framed)



**Pauline Shaw**

*Knight Knight, 2022*

Felted wool and silk, cotton scrim suspended through cable wire, steel rod, stainless steel hardware

93 x 60 x 1/4 in

(236.2 x 152.4 x 0.6 cm)



**Pauline Shaw**

*Streetlight, 2022*

Handblown glass, marbles, lava rock on cast bronze post

69 1/4 x 12 x 12 in

(175.9 x 30.5 x 30.5 cm)



**Antonia Kuo**

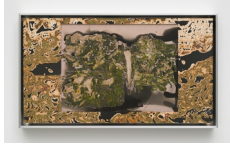
*Array, 2022*

Unique chemical painting on light-sensitive silver gelatin paper on wood panel with steel studs in welded aluminum frame

34 x 45 x 2 1/4 in

(86.4 x 114.3 x 5.7 cm) (framed)

# CHAPTER NY



**Antonia Kuo**

*Shan Shui (山水)*, 2022

Unique chemical painting on light-sensitive silver gelatin paper mounted on aluminum in welded aluminum frame

9 3/4 x 16 3/4 x 1 1/4 in

(24.8 x 42.5 x 3.2 cm) (framed)



**Antonia Kuo**

*Wing Walker*, 2022

Ceramic

23 x 14 x 14 in

(58.4 x 35.6 x 35.6 cm)



**Antonia Kuo**

*Turbine*, 2022

Ceramic

23 x 13 x 13 in

(58.4 x 33 x 33 cm)



**Antonia Kuo**

*Helios*, 2022

Ceramic

23 x 19 x 13 in

(58.4 x 48.3 x 33 cm)



**Antonia Kuo**

*Persona*, 2022

Unique chemical painting on light-sensitive silver gelatin paper mounted on aluminum in welded aluminum frame

21 x 16 3/4 x 1 1/2 in

(53.3 x 42.5 x 3.8 cm) (framed)



**Antonia Kuo**

*Behemoth (diptych)*, 2022

Unique chemical painting on light-sensitive silver gelatin paper on wood panel in welded aluminum frame

93 x 81 x 2 in

(236.2 x 205.7 x 5.1 cm) (framed)

# CHAPTER NY



**Pauline Shaw**

*Nightlight*, 2022

Handblown glass, carved basswood, cloth, silver, stone, wool on  
cast bronze post

69 1/4 x 12 x 12 in

(175.9 x 30.5 x 30.5 cm)



**Pauline Shaw**

*Death Rattle*, 2022

Felted wool and cotton scrim suspended through cable wire, steel  
rod, stainless steel hardware

97 x 60 x 1/4 in

(246.4 x 152.4 x 0.6 cm)



**Pauline Shaw**

*Hangman*, 2022

Felted wool, cotton scrim

58 1/2 x 41 1/2 x 1/4 in

(148.6 x 105.4 x 0.6 cm)