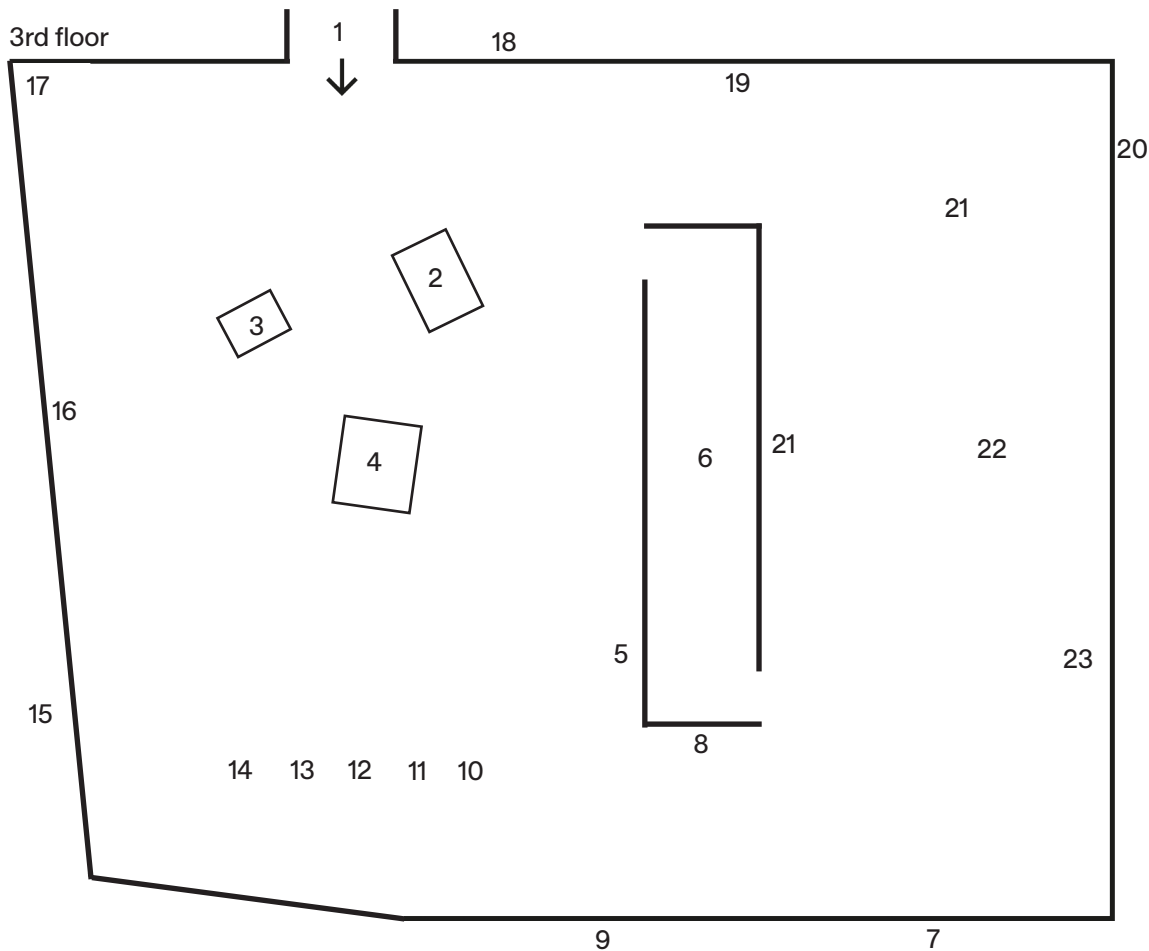


Julia Scher Maximum Security Society 08.10.2022–15.01.2023



1 *Security by Julia (Dispenser)*, 2020
Disinfectant dispenser / 29.5 x 16.5 x 10.5 cm

2 *Mama Bed*, 2003
Metal bed frame with mattress, colour 2 TFT LCD Monitors, audio recorder, 3 DCP colour CCD cameras, security video recorder, VCR player, tapes. Bedstead, steel, wood, foam, plastic, 2 monitors, 2 surveillance cameras, cables, several bed sheets. Dimensions: variable

3 *Baby Bed*, 2003
Metal bed frame, wood, glass, 1 surveillance camera, cables / Dimensions: variable

4 *Papa Bed*, 2003
Metal bed frame, mattress, wood, plastic, 4 monitors, 10 surveillance cameras, 2 computer-video-switchers, 2 video recorders, transformer, cables, several bed sheets, army uniforms / Dimensions: variable

5 *Computer Niche / Transgressions*, 1993
Wall niche, white walls, chain-link fence, monitor, translation of an original English text by the artist presented at: 'Transgressions Within The White Cube: Re-Considering Inter-Relationships Between Site, Object, Installation, Identity, and the Socio-Political' a panel discussion with Mark Dion, Renée Green, Sean Landers, Lois Nesbitt and Julia Scher, organized and moderated by Joshua Decker at the School of Visual Arts, New York, November 1992; loop

Kunsthalle
Zürich

Limmatstrasse 270
CH-8005 Zürich

Julia Scher

Maximum Security Society

08.10.2022–15.01.2023

6 *Predictive Engineering*, Kunsthalle Zürich
version, 1993/2022
Monitors, yellow / black spheres, mini drone, yellow /
black tape, mirror, surveillance camera
Architectural plan: Milica Lopicic

7 *Gate No. 5*, 2022
Paint / 150 x 82.5 cm

8 *Planet Greyhound*, 2022
Infoscreen at the bus stop somewhere near Planet
Greyhound. Video. Duration: 23 min.
Video production: Damian Weber

9 *Gate No. 8*, 2022
Paint / 150 x 83 cm

10 *Girl Dog (Hybrid)*, 2005
Marble, motion detector with audio enunciator /
76.5 x 46 x 27 cm

11 *Girl Dog (Hybrid)*, 2005
Marble, motion detector with audio enunciator /
76.5 x 46 x 27 cm

12 *Girl Dog (Hybrid)*, 2005
Marble, motion detector with audio enunciator /
76.5 x 46 x 27 cm

13 *Girl Dog (Hybrid)*, 2005
Marble, motion detector with audio enunciator /
76.5 x 46 x 27 cm

14 *Girl Dog (Hybrid)*, 2005
Marble, motion detector with audio enunciator /
76.5 x 46 x 27 cm

15 *Gate No. 4*, 2022
Paint / 150 x 89.5 cm

16 *Yellow Securityland Warnings*, 1995
Serigraphie on glass / 29.7 x 25.5 x 1.20cm

17 *Architectural Vagina*, 1991-2018
JVC camera, video output, archive images, vegetal
elements / Dimensions: variable

18 *Gate No. 2*, 2022
Paint / 150 x 85 cm

19 *Surveillance Area*, 1994
Monitor, telecamera, metal, Plexiglass / 34 x 122 x 73
cm

20 *Gate No. 7*, 2022
Paint / 150 x 69.5 cm

21 *American Fibroids*, 1996
Equipment for table, 15 x hard drives (defect), framed
pictures, table, floor piece, mirror, various artworks
for table, empty rack from Security By Julia IV, signs,
costumes for wardrobe, sign bin, director's chair /
Dimensions: variable

22 *Discipline Masters*, 1988
Digital video transferred from original Betamovie and
U-Matic NTSC (color, sound) 4:3 ratio. Duration 224
min.

23 *From the Series Ecology of Visibility*, 2022
Metal, lacquer / 40 x 60 cm

2, 3, 4, 13, 14, 21, 22: Courtesy the artist and Esther
Schipper, Berlin

5, 7, 8, 9, 15, 18, 20, 23: DREI, Köln

10, 11, 17: Collection MAMCO

12: Private collection, Switzerland

16, 19: Courtesy the artist and MASSIMODECARLO

6: Courtesy SFMOMA San Francisco Museum of
Modern Art, architectural plan: Milica Lopicic

Kunsthalle
Zürich

Limmatstrasse 270
CH-8005 Zürich