

MAXIMILLIAN WILLIAM

47 MORTIMER STREET, LONDON, W1W 8HJ
info@maxmillianwilliam.com | T: +44 (0) 207 998 4054

RICHARD MAGUIRE
WHAT HAPPENS TO REMAIN UNSAID



Bodies between wallpaper and trees, 2022
Graphite on paper, mounted on found paper
15.3 x 12.6 and 9.6 x 8.6 cm



If the finely embroidered backdrop fell, one
would still fail to see the beauty of the slum
(I), 2022
Graphite on paper
21.7 x 16.4 cm



An intimacy so widespread, yet what
happens to remain buried and unsaid, 2022
Graphite on paper
21.6 x 15 cm



Midnight Horror: Flowers, 2021
Graphite on paper
24 x 18 cm



A spectre of empire's extraction, 2021
Graphite on paper
25 x 19 cm



Midnight Horror: Flowers, 2021
Graphite on paper, mounted on found paper
23 x 16.8 cm



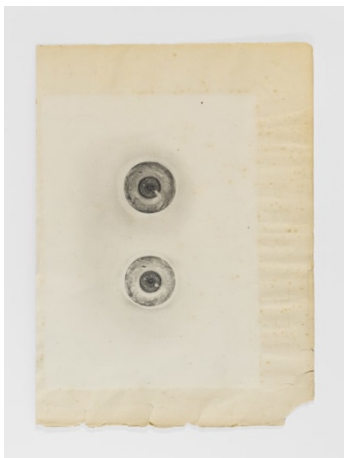
If the finely embroidered backdrop fell, one
would still fail to see the beauty of the slum
(II), 2022
Solvent transfer on paper
19.2 x 14 cm



Midnight Horror: A night terror, 2022
Graphite on found paper
30 x 31 cm



Portrait of a man showering, 2021
Graphite on paper
24.3 x 18.1 cm



A recursive gaze, 2022
Graphite on found paper
25 x 18 cm



I envision you, caressing me, 2021
Graphite on paper, mounted on found paper
25 x 15.1 cm



A body excavated, 2022
Graphite on paper, mounted on found paper
13 x 12 cm



Midnight Horror: Fruit, 2021
Graphite on found paper
31 x 45 cm



A daughter, a mistress and master, 2022
Graphite on paper, mounted on found paper
12.2 x 11.7 cm



A racialised man reclines (I), 2022
Graphite on paper, mounted on found paper
15.6 x 14.8 cm



Rich like looted silver or pearls (II), 2022
Graphite on paper, mounted on found paper
7.3 x 5.7 cm



A racialised man reclines (II), 2022
Graphite on paper, mounted on found paper
19 x 24.1 cm



Night blooming Jasmine, 2022
Graphite on paper, mounted on found paper
12.5 x 12.5 cm



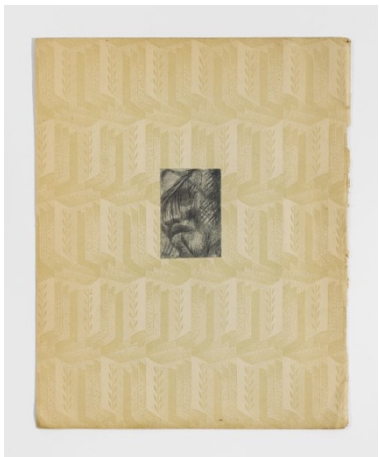
Bodies as Bhoys I, 2022
Graphite on paper, mounted on found paper
15.5 x 9.7 cm



Bodies as Bhoys II, 2022
Graphite on paper, mounted on found paper
15.3 x 12 cm



A man in turban holding a sandal, 2021
Graphite on paper, mounted on found paper
31.5 x 24.5 cm



A shadowy remnant, 2022
Graphite on paper, mounted on found paper
29 x 20 cm



The forest's embrace, 2021
Graphite on paper, mounted on found paper
29 x 20 cm