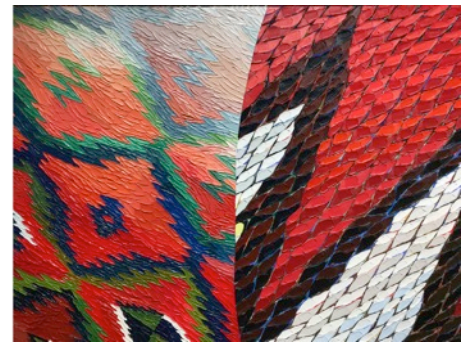
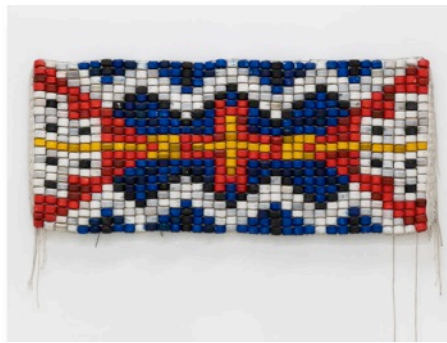


For Immediate Release: August 8, 2022  
Media Contact: [museum-press@ucsb.edu](mailto:museum-press@ucsb.edu)

**Art, Design & Architecture Museum Presents *Ishi Glinsky: Upon a Jagged Maze***  
**September 1, 2022 - January 22, 2023**



Images (left to right): Ishi Glinsky, *Coral vs. King Snake Jacket*, 2019 (detail), Hammer Museum, Los Angeles. Purchased through the Board of Advisors Acquisition Fund; Ishi Glinsky, *Spitfire*, 2017, Collection of Beth Rudin DeWoody; Ishi Glinsky, *Peaks and Valleys*, 2018 (detail), Collection of Marc Selwyn, Los Angeles.

**(Santa Barbara, CA)**—The Art, Design & Architecture Museum at UC Santa Barbara presents the first solo museum exhibition of LA-based artist **Ishi Glinsky** (b. 1982, Tucson, Arizona – Tohono O’odham). An early career survey covering work made over the past decade, the exhibition features 25 of Glinsky’s works, including painting, works on paper, and mixed-media sculpture. Glinsky’s art draws from the traditions of the Tohono O’odham Nation as well as those of various North American Native arts, such as jewelry making, basketry, and weaving, among others, in order to honor Native Americans’ place in history and art movements. Organized by the Art, Design & Architecture Museum at UCSB, the exhibition is on view from September 1, 2022 through January 22, 2023.

“The work of Ishi Glinsky offers viewers a larger-than-life invitation to engage with the Native arts of North America and learn about the rich cultural history and present-day challenges facing Indigenous peoples. Utilizing monumental scale and found materials, his work honors the resourcefulness, beauty, and importance of these Native art forms while simultaneously asserting their place within Contemporary Art. The AD&A Museum is thrilled to be organizing Ishi’s first solo museum exhibition, and hope it opens his practice up to new audiences and the institutional recognition it deserves,” said AD&A Museum Director Gabriel Ritter.

For the Tohono O’odham, “The Man in the Maze” represents the people’s emergence upon earth, but more broadly also reflects paths taken throughout life and beyond. With the title ***Upon a Jagged Maze***, artist Ishi Glinsky reflects on his personal journey through his evolving artistic practice. Glinsky approaches moments in history, art history, and the presentation of physical objects as endeavors of engagement and care that comprise his path. His journey of understanding is also embedded in the experience of this exhibition. As Glinsky explains, “The viewer can actively track twists and turns I’ve taken in mediums and processes thus far, intended to honor indigenous knowledge in new spaces and viewed in new ways. Throughout *Upon a Jagged Maze*, there are moments meant to open the door for

further discussion or understanding.” This early career survey of Glinsky’s art will present an overview of his artistic output thus far, including work from 2009 to the present.

Ishi Glinsky was born in Tucson, AZ in 1982, but has resided and worked in Los Angeles, CA for the past sixteen years. As a sculptor, painter, and installation artist, Glinsky focuses on aspects of resourcefulness, permanence and continuity, based upon his material compositions. Materiality and intertribal cultural celebrations are central to this focus, while Glinsky explores a range of historical pieces, both major events and ephemera, across Native North America. A fusion of the past with contemporary art, Glinsky is a mostly self-taught artist who observes both the techniques of his people of the Tohono O’odham Nation, as well as the traditions of other Native nations in a celebration of interconnectivity and survival of those practices. Through techniques based in scale and verisimilitude, Glinsky acknowledges craft traditions as fine art forms.

#### RELATED PROGRAMS + CATALOG

Please visit the AD&A Museum website ([www.museum.ucsb.edu](http://www.museum.ucsb.edu)) for a full list of related programs. The exhibition will be followed by a scholarly monographic catalog with contributions by Indigenous writers, scholars, and artist/activists.

#### CREDITS

*Ishi Glinsky: Upon a Jagged Maze* is organized by the Art, Design & Architecture Museum at UCSB and is curated by Gabriel Ritter, AD&A Museum Director, with Kendall Lovely, Curatorial Research Fellow.

The AD&A Museum’s presentation is made possible thanks to generous support from the Museum Council.

#### ABOUT THE ART, DESIGN & ARCHITECTURE MUSEUM

The AD&A Museum at the University of California Santa Barbara is both a teaching museum, committed to the development of critical thinking and visual literacy in support of the University’s goals of education, research and service, and a resource for the wider Santa Barbara Community. Its mission is to stimulate research, support artistic practice, and generate original programming through the Museum’s collections. These include the Architecture and Design Collection, one of the most relevant architectural archives in North America, focused on the development of modern architecture in Southern California, and an encyclopedic art collection, with holdings ranging from the Ancient Americas to today.

#### AD&A MUSEUM INFORMATION + DIRECTIONS

Admission to all exhibitions and programs at the AD&A Museum is free, unless otherwise noted. Wednesday-Sunday: 12pm to 5pm. Located at University of California, Santa Barbara, 552 University Road, Santa Barbara, CA. On campus parking is \$8 for the full day. Visit [www.museum.ucsb.edu](http://www.museum.ucsb.edu) for details or call 805-893-2951.

From Santa Barbara and points south: 101 North to Highway 217 exit (to Airport and UCSB). Stay left; enter campus at Henley Gate. Take the first right at the roundabout onto Mesa Ave. At the third traffic light, turn left onto Ocean Road. Continue on Ocean Road, stay in left lane through the intersection of Ocean Ave at El Colegio Road. Turn left into Parking Structure #22.

# AD&A MUSEUM

UC SANTA BARBARA

University of California, Santa Barbara  
Santa Barbara, California 93106-7130

TEL: 805.893.2951  
FAX: 805.893.3013  
[www.museum.ucsb.edu](http://www.museum.ucsb.edu)

From points north: 101 South to Goleta, exit at Los Carneros Road. Turn right at exit ramp and continue south. Turn left onto El Colegio Road. Continue until the West Campus Entrance traffic light and bear right. At the next traffic light, turn right onto Ocean Road. Turn left into Parking Structure #22.