

S.L.

PRESS RELEASE

Emma Kohlmann
With Fire, I Love

18 January - 18 February, 2023
Opening reception Wednesday, 18 January, 6-8pm

Silke Lindner is excited to announce *With Fire, I Love*, a solo exhibition by artist Emma Kohlmann. For her fifth solo exhibition in New York, and the first one with the gallery, she will show a series of new paintings with individually pyrographed frames. In these atmospheric paintings, Kohlmann continues to expand her distinct universe, in which anthropomorphous figures, flora and fauna coexist in spiritual spheres, free of hierarchies.

Visually informed by a variety of cultural references encompassing Greek and Roman mythology, modern painting history, folk art and DIY punk ephemera, her paintings manifest a cosmos in which a recurring set of characters inhabit their realm with a naturalness that is both poignant and comical. Her figures' unique facial expressions, often seductive, curious, dreamy, sinister and serene all at once, equally possess a simplicity and depth that is key to Kohlmann's larger interplay of form and content.

Stylistically naive and folksy, the absence of perspectives and lack of relational scales translates the egalitarian belief system Kohlmann's practice is rooted in. Considering not only human beings, but every living organism, a sense of togetherness and community is palpable throughout her work: entangled couples gather inside a giant blossom, performing dances behind plants' leaves while a group of naked figures uses joint efforts to hold up the burdens of a heavy, drooping flower. Little angels, demons, horses and birds hover in front of a colossal red figure bent over on knees and elbows. Enigmatic, she looks straight through the viewer, channeling the dreamlike scene in a single gaze.

In an evocative color scheme of mossy greens, Prussian blue and crimson red, Kohlmann's moody palette transcends from nature's elements to the spiritual, mirroring the unique spaces she creates at the intersection of the earthly and the fantastical. Like deeply hidden chambers, the paintings open doors to most wondrous places, where the spirits reign freely, in the depth of the mind.

Emma Kohlmann (born 1989 in The Bronx) lives and works in Northampton, MA. She received a B.A. from Hampshire College, MA, and has exhibited in the United States and internationally. She has had solo exhibitions at Jack Hanley Gallery (New York, NY), V1 (Copenhagen, DK) and The Journal/Tennis Elbow (New York, NY) and has been included in numerous group exhibitions including shows at the Museum of Contemporary Art Tucson, (Tucson, AZ) Venus over Manhattan (New York, NY), The Pit (Los Angeles, CA), and Andrew Edlin (New York, NY). Her work is in the collection of the Santa Barbara Museum of Art, CA and upcoming shows include a solo exhibition at Cooper Cole, Toronto, in June 2023. She publishes her own zines, and frequently collaborates with artists, writers, musicians and designers on other ephemera like book plates, records and clothes. She co-founded and co-runs Mundus Press with her sister Charlotte Kohlmann.

For more information please contact Silke Lindner at silke@silkelindner.com

S.L.

Emma Kohlmann | *With Fire, I Love*

Emma Kohlmann

CHECKLIST



EK2302

Emma Kohlmann
Large Thistle, 2023
Acrylic on linen, burnt wood frame
60 x 80 inches



EK2301

Emma Kohlmann
Points That Are Connecting, 2023
Acrylic on linen, burnt wood frame
60 x 80 inches



EK2303

Emma Kohlmann
Portals 2, 2023
Acrylic on linen, wood burnt frame
80 x 60 inches



EK2305

Emma Kohlmann
Working On It, 2023
Acrylic on linen, burnt wood frame
30 x 40 inches



EK2310

Emma Kohlmann
Body Armor, 2023
Acrylic on linen, burnt wood frame
24 x 20 inches

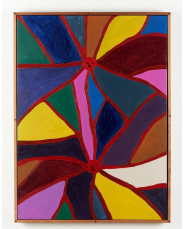
S.L.



EK2311
Emma Kohlmann
Blood Dog, 2023
Acrylic on linen, burnt wood frame
20 x 16 inches



EK2316
Emma Kohlmann
Portals 1, 2022
Acrylic on linen, burnt wood frame wood frame
48 x 36 inches



EK2307
Emma Kohlmann
Synopsis Rainbow, 2023
Acrylic on linen, burnt wood frame
38 x 28 inches



EK2317
Emma Kohlmann
Three Pronged Sound Fork, 2023
Acrylic on linen, burnt wood frame
20 x 16 inches



EK2318
Emma Kohlmann
Practice Piece, 2023
Acrylic on linen, burnt wood frame
20 x 16 inches



EK2314
Emma Kohlmann
Budding, 2023
Acrylic on linen, frame
20 x 16 inches

S.L.



EK2308
Emma Kohlmann
Angels Flight, 2023
Acrylic on linen, burnt wood frame
30 x 30 inches



EK2309
Emma Kohlmann
My Shell, 2023
Acrylic on linen, burnt wood frame
30 x 30 inches



EK2319
Emma Kohlmann
Split Personality, 2023
Acrylic on linen, burnt wood frame
10 x 8 inches



EK2306
Emma Kohlmann
With Fire, I Love, 2023
Acrylic on linen, burnt wood frame
40 x 30 inches



EK2313
Emma Kohlmann
Family Flower, 2023
Acrylic on linen, burnt wood frame
20 x 16 inches



EK2312
Emma Kohlmann
Touching, 2023
Acrylic on linen, frame
20 x 16 inches

S.L.



EK2315
Emma Kohlmann
Cow, 2023
Acrylic on linen, burnt wood frame
23 x 26 inches



EK2304
Emma Kohlmann
Early Stages, 2023
Acrylic on linen, burnt wood frame
50 x 50 inches