

The approach



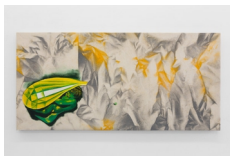
Rinella Alfonso b. 1995
Two corn in a row, 2022
Egg tempera on wood
50 x 60 cm
19 11/16 x 23 5/8 in.
(AP-ALFOR-00001)



Rinella Alfonso b. 1995
We are here, we are pierced, 2022
Oil, hair on wood
89 x 122 cm
35 1/16 x 48 in.
(AP-ALFOR-00003)



Lynda Benglis b. 1941
Bird's Nest #12, 2016
Glazed ceramic
92.7 x 21.6 x 21.6 cm approx.
36.5 x 8.5 x 8.5 in approx.
(AP-BENGL-00001)



Enzo Cucchi b. 1949
Untitled, 2013
Oil on canvas
44 x 91 cm
17 5/16 x 35 13/16 in.
(AP-CUCCE-00001)



Enzo Cucchi b. 1949
BUCO DI CULO, 2017
Bronze
40 x 29 x 24 cm
15 3/4 x 11 7/16 x 9 7/16 in.
(AP-CUCCE-00002)

The approach



Rezi van Lankveld b. 1973
Pink Cloud, 2020
Oil on canvas
55 x 48 cm (21 5/8 x 18 7/8 in)
(AP-LANKR-00329)



Rezi van Lankveld b. 1973
View, 2022
Oil on canvas
55 x 44 cm
21 5/8 x 17 5/16 in.
(AP-LANKR-00335)



Rezi van Lankveld b. 1973
The colour of my room, 2022
Oil on canvas
58 x 46 cm
22 13/16 x 18 1/8 in.
(AP-LANKR-00336)



Erika Verzutti b. 1971
Diorama of Fish, 2021
Oil on papier mâché, bronze, aluminium
82 x 117 x 5 cm
32 1/4 x 46 1/8 x 2 in
(AP-VERZE-00002)



Erika Verzutti b. 1971
Poodle with News, 2022
Papier-mâché, polymer clay and acrylic paint
52 x 38 x 38 cm
20 1/2 x 14 15/16 x 14 15/16 in.
(AP-VERZE-00003)