

# ALTMAN SIEGEL

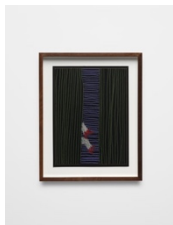
1150 25TH ST. SAN FRANCISCO, CA 94107

tel: 415.576.9300 / fax: 415.373.4471

www.altmansiegel.com

Group exhibition curated by Chris Johanson  
November 3 – December 17, 2022

## Gallery 2



**Louis M Schmidt**

*What Goes On Back There?*, 2022

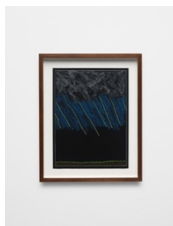
Colored pencil on paper

12 x 9 in

30.5 x 22.9 cm

Framed: 15 1/4 x 12 1/4 in

38.7 x 31.1 cm



**Louis M Schmidt**

*Of All Our Attempts at Temples*, 2022

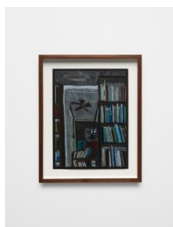
Colored pencil on paper

12 x 9 in

30.5 x 22.9 cm

Framed: 15 1/4 x 12 1/4 in

38.7 x 31.1 cm



**Louis M Schmidt**

*The Chapel Bar + Bookstore Broadstairs England*, 2022

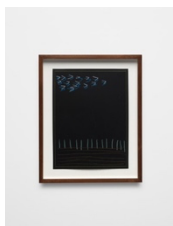
Colored pencil on paper

12 x 9 in

30.5 x 22.9 cm

Framed: 15 1/4 x 12 1/4 in

38.7 x 31.1 cm



**Louis M Schmidt**

*It Will Be Peaceful When We Are Gone*, 2022

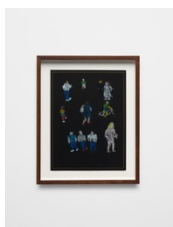
Colored pencil on paper

12 x 9 in

30.5 x 22.9 cm

Framed: 15 1/4 x 12 1/4 in

38.7 x 31.1 cm



**Louis M Schmidt**

*Some People Munsterplatz Basel Switzerland*, 2022

Colored pencil on paper

12 x 9 in

30.5 x 22.9 cm

Framed: 15 1/4 x 12 1/4 in

38.7 x 31.1 cm

# ALTMAN SIEGEL

1150 25TH ST. SAN FRANCISCO, CA 94107

tel: 415.576.9300 / fax: 415.373.4471

www.altmansiegel.com



**Louis M Schmidt**

*Some Humans At SEABF 2022, 2022*

Colored pencil on paper

12 x 9 in

30.5 x 22.9 cm

Framed: 15 1/4 x 12 1/4 in

38.7 x 31.1 cm



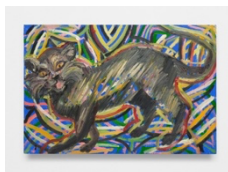
**Erica Dawn Lyle**

*The New World, 2022*

Printed booklet and three color inkjet photographs

11 x 8 1/2 in each

27.9 x 21.6 cm



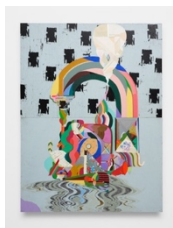
**Rachid Bouhamidi**

*Catapult 3, 2022*

Oil and acrylic on wood

16 x 24 in

40.6 x 61 cm



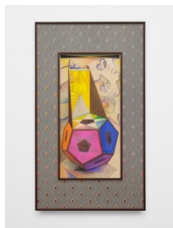
**Monica Canilao, Xara Thustra**

*Reflection, refraction, 2018*

Graphite, acrylic, gouache, and latex paint on framed out wood panel

24 x 36 in

61 x 91.4 cm



**Zach Harris**

*2020 Calendar / Chair, 2018 - 2019*

Water-based paint, ink, graphite, conte crayon, and aluminum on carved wood

73 x 42 3/8 x 1 7/8 in

185.4 x 107.6 x 4.8 cm



**Dylan Roberts**

*Anthro.Shadow, 2021*

Heat transfer, ink on canvas

30 x 20 x 1 1/2 in

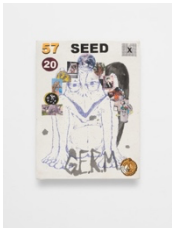
76.2 x 50.8 x 3.8 cm

# ALTMAN SIEGEL

1150 25TH ST. SAN FRANCISCO, CA 94107

tel: 415.576.9300 / fax: 415.373.4471

www.altmansiegel.com



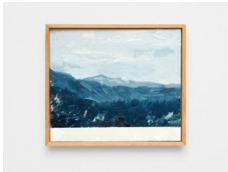
## Dylan Roberts

57, 2020

Heat transfer, ink on canvas

12 x 9 in

30.5 x 22.9 cm



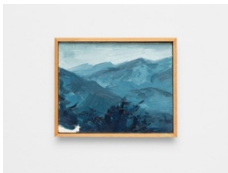
## Jamal Gunn Becker

*Untitled Blue Landscape #2 - Concerning the process of time*, 2020

Oil on masonite

8 x 9 1/2 in

20.3 x 24.1 cm



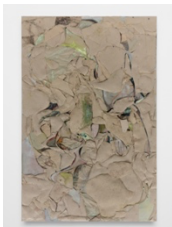
## Jamal Gunn Becker

*Untitled Blue Landscape #1 - Concerning the process of time*, 2020

Oil on masonite

7 x 8 1/2 in

17.8 x 21.6 cm



## Erin Trefry

*One Meter of River*, 2021

Oil paint, linen, pins and earth from the Dead Sea

72 x 48 in

182.9 x 121.9 cm



## Chris Johanson, Johanna Jackson

*Table I*, 2019

Reclaimed wood and glazed porcelain tiles

30 3/8 x 29 1/8 x 22 in

77.2 x 74 x 55.9 cm



## Johanna Jackson

*Candle holder with under-determined clock*, 2022

Porcelain

11 x 7 in

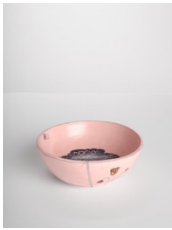
27.9 x 17.8 cm

# ALTMAN SIEGEL

1150 25TH ST. SAN FRANCISCO, CA 94107

tel: 415.576.9300 / fax: 415.373.4471

www.altmansiegel.com



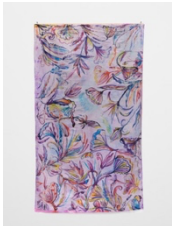
## Johanna Jackson

*Pink bowl with flower and flies*, 2022

Porcelain

3 x 8 x 8 in

7.6 x 20.3 x 20.3 cm



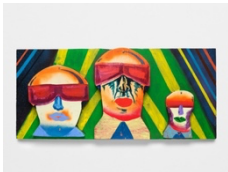
## Marsea Goldberg

*Lotus Land*, 2021

Silk paint on silk

72 x 54 in

182.9 x 137.2 cm



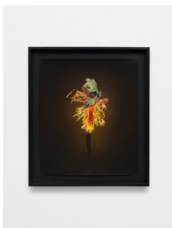
## Kyle Ranson

*Speed Cops*, 2019

Spray paint, acrylic, wood

18 x 40 in

45.7 x 101.6 cm



## Francesca Gabbiani

*Limelight*, 2021

Acrylic airbrush, ink, gouache and colored paper on paper

Framed: 19 x 16 1/2 in

48.3 x 41.9 cm



## Gary Panter

*Triffid*, 2020

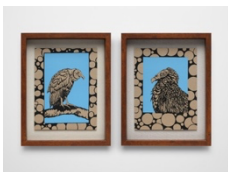
Ink and watercolor on 2 ply Strathmore drawing paper

8 1/2 x 11 in

21.6 x 27.9 cm

Framed: 14 1/4 x 11 1/8 in

36.2 x 28.3 cm



## Rommel Romo

*CBCA*, 2021

Silk screen print on card stock

11 x 8 1/2 in each

27.9 x 21.6 cm

Framed: 15 x 12 in each

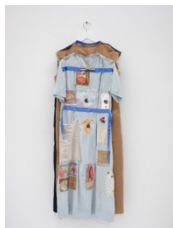
38.1 x 30.5 cm

# ALTMAN SIEGEL

1150 25TH ST. SAN FRANCISCO, CA 94107

tel: 415.576.9300 / fax: 415.373.4471

www.altmansiegel.com



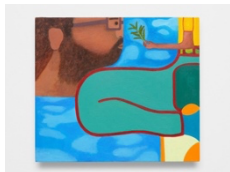
## Susan Cianciolo

*RUN 13*, 2020

Mixed media and collage on dress and coat

51 x 18 x 2 in

129.5 x 45.7 x 5.1 cm



## Alex Cohen

*Olive branch for self*, 2022

Acrylic on canvas

13 x 15 1/2 in

33 x 39.4 cm



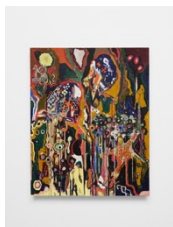
## Mario Ayala

*Kaplan's Tow*, 2022

Acrylic on Masonite

18 x 24 in

45.7 x 61 cm



## JPW3

*Snake Head Drifter 13*, 2022

Oil and acrylic on panel

50 x 40 in

127 x 101.6 cm

## Gallery 3



## Ross Simonini

*Milk Heaven*, 2022

Milk paint (olive oil, fossilized sea shells, pine resin, flax oil, beeswax, pigment, soap, salt), trace minerals, cedarwood oil, graphite on muslin in walnut frame

16 x 22 in

40.6 x 55.9 cm

Framed: 21 1/4 x 26 3/4 in

54 x 67.9 cm



## Ross Simonini

*Three Under Drawings*, 2021

Ink, cardboard, linen tape on paper in walnut frame

Framed: 11 1/2 x 17 1/2 in

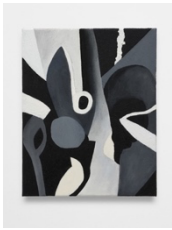
29.2 x 44.5 cm

# ALTMAN SIEGEL

1150 25TH ST. SAN FRANCISCO, CA 94107

tel: 415.576.9300 / fax: 415.373.4471

www.altmansiegel.com



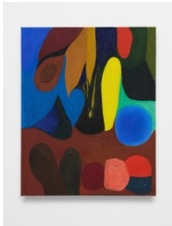
**Aaron Wrinkle**

*make up go back to bed*, 2022

Raw oil on primed canvas

20 x 16 in

50.8 x 40.6 cm



**Aaron Wrinkle**

*am sleep mode*, 2022

Raw oil on primed canvas

20 x 16 in

50.8 x 40.6 cm



**Phil Wagner**

Untitled, 2022

Silkscreen on canvas, spray paint, polyurethane and tinted epoxy resin

44 x 32 in

111.8 x 81.3 cm



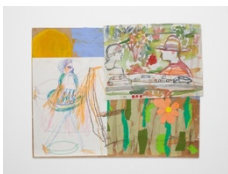
**Sara Mayako Gernsbacher**

*Flower Stack RYBB*, 2022

Pigment and silicone on canvas

98 x 28 in

248.9 x 71.1 cm



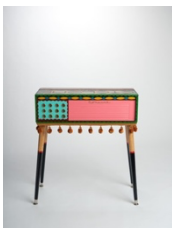
**Susan Cianciolo**

*Friiit*, 2020

Gouache, pen, crayon and collage on paper and canvas

15 1/2 x 20 in

39.4 x 50.8 cm



**Aaron Rose**

*Peduncle*, 2022

Mixed media on electric chord organ

30 x 24 1/2 x 10 in

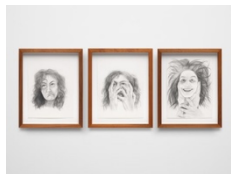
76.2 x 62.2 x 25.4 cm

# ALTMAN SIEGEL

1150 25TH ST. SAN FRANCISCO, CA 94107

tel: 415.576.9300 / fax: 415.373.4471

www.altmansiegel.com



## Taravat Talepasand

*Are We in This Together*, 2020

Graphite on paper

12 x 9 in each

30.5 x 22.9 cm

Framed: 15 1/2 x 12 1/2 in each

39.4 x 31.8 cm



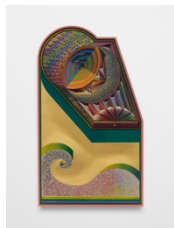
## Erin Trefry

*Figure Words 1*, 2019-2021

Glazed stoneware, bookends and drawer pull on cinder blocks

13 1/2 x 13 1/2 x 9 in

34.3 x 34.3 x 22.9 cm



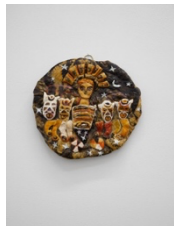
## Zach Harris

*Three Bodies, One Eclipse*, 2019-2022

Water-based paint, linen, graphite, and ink on carved wood

54 x 31 1/2 in

137.2 x 80 cm



## Jenna Thornhill

*Synagogue Helios*, 2021

Challah bread, food coloring, metal leaf, and resin

12 x 11 x 1 1/2 in

30.5 x 27.9 x 3.8 cm



## Jenna Thornhill

*Calico Bass*, 2020

Challah bread, food coloring, and resin

9 x 16 x 3 in

22.9 x 40.6 x 7.6 cm



## Jenna Thornhill

*New Moon Grunion Run*, 2021

Challah bread, food coloring, metal leaf, and resin

14 x 11 x 2 1/2 in

35.6 x 27.9 x 6.3 cm

# ALTMAN SIEGEL

1150 25TH ST. SAN FRANCISCO, CA 94107

tel: 415.576.9300 / fax: 415.373.4471

[www.altmansiegel.com](http://www.altmansiegel.com)



## **Jenna Thornhill**

*Hand, 2020*

Challah bread, food coloring, and resin

6 1/2 x 13 x 2 in

16.5 x 33 x 5.1 cm



## **Jenna Thornhill**

*California Brown Pelican, 2020*

Challah bread, food coloring, and resin

14 x 8 x 2 in

35.6 x 20.3 x 5.1 cm



## **Eddie Ruscha**

*Untitled 7, 2022*

Acrylic on paper

16 3/4 x 14 in

42.5 x 35.6 cm

Framed: 20 x 17 in

50.8 x 43.2 cm