

VITRINE

20 January ————— 8 April 2023

Follicle Symphony Ludovica Gioscia

'Follicle Symphony' is Ludovica Gioscia's third solo show with the gallery exploring the experience of IVF and pregnancy in her practice and philosophy. The exhibition presents a new body of mixed media work by the London-based Italian artist created in 2022 during several stages of her pregnancy.

Gioscia's work reads like a diary of layered experiences and relations, which now include the incredible journey the body and mind undergo whilst forming a new life. 'Follicle Symphony' invites the public into a womb-like space, revealing her amazement at the wonders of pregnancy, which include building a new organ. She achieves this with her distinctive artistic style and approach to materials, creating a magical interpretation of the process in textiles, papier-mâché, ceramic and other mixed media.

Inspired by placenta, follicles, embryos and polycystic ovaries, the works presented in the exhibition use holes, circles and string to imitate these micro and macro biological forms. In one example of this, Gioscia uses pulped papier-mâché balls to create growth-like forms on framed gesso panels and large white primed dishes that the artist likens to petri dishes - the lab instrument used to culture the embryo. The works are an evolution of the artist's pulp archives, within which all types of mashed paper are meticulously labelled, and ingredients listed. However, in these new works, all labels have disappeared, and the samples are floating in space, free to create new combinations.

Presented as part of the show are new works from the artist's ongoing Portals and Giant Accessories series. 'Portals', began in 2017, are large scale textile works which hover in space. The artist sees each Portal as a performer with its own role and story, and simultaneously as membranes existing between different dimensions. The new smaller floating textiles have titles such as 'Galactic Placenta', 'Lunar Coincubation', 'Nauseous Sunshine' and 'Organic Portal' – with the latter depicting a Caesarean section. They use materials including wool, string and magnetic tape to visualise veins, organs, and medical procedures.

The 'Giant Accessories' sculptures on display are a Giant Earring, inspired by polycystic ovaries, and a floor to ceiling Giant Necklace. The necklace is constructed of large papier-mâché pearls, reminiscent of the vascular system in magenta, alizarin crimson, phthalo blue and dioxazine purple, which hold together a placenta-like pendant.

The body of work is a journey into the ever-changing circumstances one must consider and adapt to during pregnancy. These are reflected through the amalgamation of different materials and combinations of processes that result in an otherworldly symphony of bodily experiences and cosmic assemblages

Ludovica Gioscia (b. 1977, Rome, IT) lives and works in London. She holds a BA (Hons) in Fine Art from Chelsea College of Art, London, UK (2000) and an MFA in Fine Art Media from The Slade School of Fine Art (2004). Her work has been published in The New York Times, The Los Angeles Times, Fluor, Exibart, Exit Express, Flash Art International, Kunstforum, Etapes International, Elephant, The End and AN. Her work is included in '100 Sculptors of Tomorrow', published by Thames and Hudson in 2019.

She has exhibited internationally at galleries and institutions including: Museo della Figurina, Fondazione Modena Art Visivie, Modena, IT; The Warhol Foundation, Pittsburgh, US; La Fabbrica del Cioccolato, Blenio, CH; Creative Centre Osaka, Osaka, JP; Palazzo da Mosto, Fondazione Palazzo Magnani, Reggio Emilia, IT; Fondazione MACC, Calasetta, IT; MACRO, Rome, IT; Palazzo Fiano, Rome, IT; La Centrale, Brussels, BE; FuturDome, Milan, IT; VITRINE, Basel, CH and London, UK; Baert Gallery, Los Angeles, US; Salon 94, The Flag Art Foundation, Allegra LaViola, NY, US; The Miro' Foundation, Barcelona, ES; Jerwood Space, London, UK; South London Gallery, London, UK; MNAC, Bucharest, RO; Comfort Moderne, Poitiers, FR; Sotheby's, London, UK; Kino International, Berlin, DE

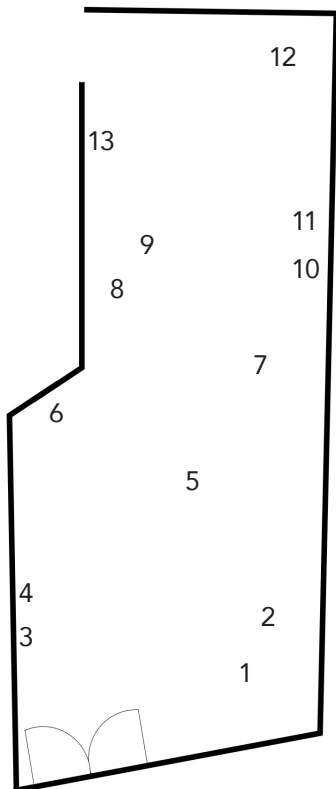
VITRINE is focused on artistic experimentation and emerging interdisciplinary practices. The gallery was founded in 2012, from a project space, in Bermondsey, London. In 2016, a second space in Basel opened, followed by a digital space in 2020, and a third space in London's Fitzrovia in Spring 2022. Over this decade, we have established a reputation as a selector and nurturer of new talent, supporting artists' careers and the development of their ideas.

Our programme is focused on interdisciplinary approaches in a variety of media, concentrating on artists working in installation, sculpture and performance. We are committed to supporting experimental practices that flourish site- responsively, in alternative environments to the traditional white cube, and that are often underrepresented in the art market. Our online exhibition space VITRINE Digital has enabled us to further engage with new media as an defining medium of contemporary art.

Our spaces are transparent: In Bermondsey, glass windows cover the entire 16-metre-long, panoramic space; In Basel, our space – custom designed by Swiss architects PanteraPantera-offers a 360 degree 'in-the-round' viewing experience. This transparent architecture allows all exhibitions to be viewable 24/7 from the surrounding public squares. Our Fitzrovia space is a more conventional gallery space. Glass remains a defining feature of the architecture, with windows flanking a ground floor exhibition space. All our spaces are wheelchair accessible. We further our programme through international satellite exhibitions, gallery collaborations and art fairs.

Our business model is a hybrid. We operate an expanding commercial gallery, representing a core group of artists and advising international clients. Our experience is principally in the primary market and notably with institutions, foundations and outdoor sculpture projects, mirroring the ambition and experimental commitment of the programme. Our work in the public realm and commitment to supporting artists with ambitious experimental exhibitions has allowed us access to public funding, which we have carefully used over our 10-year history for specific large-scale non-profit projects. We founded the Sculpture At commissioning programme in 2014 and have an extensive portfolio of producing outdoor sculpture in both public and private space.

For a price list and all sales enquiries, please contact: sales@vitrinegallery.com
For press enquiries, please contact: press@vitrinegallery.com



1. Ludovica Gioscia, Lunar Coincubation, 2022. Metal pole, fabric and thread. 143 x 103 cm. Unique.

2. Ludovica Gioscia, Galactic Placenta, 2022. Metal pole, fabric, wool, plastic, ribbon, magnetic tape, fake hair, screen printing ink and thread. 143 x 103 cm. Unique.

3. Ludovica Gioscia, Embryo Effevesence, 2022. Mixed media on primed and gloss MDF. 50 x 50 x 5 cm. Unique.

4. Ludovica Gioscia, Chemoattraction Supernovae, 2022. Mixed media on primed and gloss MDF. 50 x 50 x 5 cm. Unique.

5. Ludovica Gioscia, Crimson Entanglement, 2022. Papier-mâché, rope, polystyrene, paper, wallpaper paste, PVA glue, fabric, wool. 330 x 60 x 55 cm. Unique.

6. Ludovica Gioscia, Polyamorous Biology, 2022. MDF, Gloss paint, fabric, epoxy resin glue, screws, cardboard, paper, thread, PVA, wool, pigments, acrylic paint, plaster, wallpaper paste, buckles. 234 x 90 x 20 cm. Unique.

7. Ludovica Gioscia, Venusian Flowers, 2022. Metal pole, fabric and thread. 143 x 103 cm. Unique.

8. Ludovica Gioscia, Organic Portal, 2022. Metal pole, fabric, wool, plastic, ribbon and thread. 143 x 103 cm. Unique.

9. Ludovica Gioscia, Nauseous Sunshine, 2022. Metal pole, fabric and thread. 143 x 103 cm. Unique.

10. Ludovica Gioscia, Follicle Symphony 2, 2022. Mixed media on gesso plywood board. Framed. 61 x 51 x 5.5 cm. Unique.

11. Ludovica Gioscia, Follicle Symphony 1, 2022. Mixed media on gesso plywood board. Framed. 61 x 51 x 5.5 cm. Unique.

12. Ludovica Gioscia, Cosmic Weave, 2022. Metal pole, fabric, screen printing ink and thread. 143 x 103 cm. Unique.

13. Ludovica Gioscia, Brimming with Life, 2022. Ceramic, fabric and thread. 21.5 x 11 x 4 cm. Unique.