

## Galerie Francesca Pia

Ericka Beckman

*Lucky Charm – Drawings and photographs from the 80's until today*

Curated with Jeanne Graff

1



**Ericka Beckman**

*Lucky Charm*

1980

C-Print

76.2 × 101.6 cm ( 30 x 40 inches )

Ed. 3/5 (+ 2 AP)

---

2



**Ericka Beckman**

*Study for Wheels and Gold (You The Better)*

1982

Oil stick, pencil and pen on paper

72.4 × 99.7 cm ( 28 1/2 × 39 1/4 inches )

---

3



**Ericka Beckman**

*Forged to Fit (Industrial Series)*

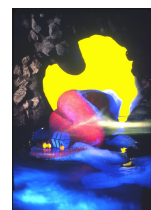
1980

Graphite, oil stick and pencil on paper

76.2 × 152.4 cm ( 30 x 60 inches )

---

4



**Ericka Beckman**

*Tongue (Boundary Figures)*

1989

C-Print

152.4 × 101.6 cm ( 60 x 40 inches )

Ed. 4/5 (+ 1 AP)

---

5



**Ericka Beckman**

*Forged to Fit: Horses (Industrial Series)*

1987

C-Print

76.2 × 101.6 cm ( 30 x 40 inches )

Ed. 3/5 (+ 1 AP)

---

6



**Ericka Beckman**

*Gameplay Study no. 2 (The Broken Rule)*

1979

Oil stick on newsprint

91.4 × 61 cm ( 36 x 24 inches )

---

7



**Ericka Beckman**

*Gameplay Study no. 3 (The Broken Rule)*

1979

Oil stick on newsprint

61 × 91.4 cm ( 24 x 36 inches )

---

8



**Ericka Beckman**

*Gameplay Study no. 4 At Rest (The Broken Rule)*

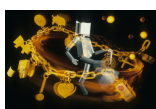
1979

Oil stick on newsprint

61 × 91.4 cm ( 24 x 36 inches )

---

9



**Ericka Beckman**

*Break in the Chain (Industrial Series)*

1986

C-Print

101.6 × 152.4 cm ( 40 x 60 inches )

Ed. 1/5 (+ 2 AP)

---

10



**Ericka Beckman**

*The 'Y' (The Broken Rule)*

1980

C-Print

39.2 × 51.4 cm ( 15 3/8 × 20 1/4 inches )

Ed. 1/5 (+ 1 AP)

---

11



**Ericka Beckman**

*We Imitate; We Break Up no. 3*

1978

Pastel, pencil on paper

45.7 × 34.3 cm ( 18 x 13 1/2 inches )

---

12



**Ericka Beckman**

*We Imitate; We Break Up no. 1*



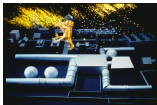
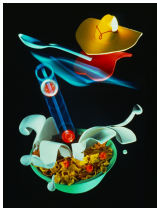


1978

Pastel, pencil on paper

33.7 × 44.5 cm ( 13 1/4 × 17 1/2 inches )

---

## Galerie Francesca Pia

- 13  **Ericka Beckman**  
*Geisha (Boundary Figures)*  
1989  
C-Print  
152.4 × 101.6 cm ( 60 x 40 inches )  
Ed. 4/5 (+ 1 AP)
- 
- 14  **Ericka Beckman**  
*Hearth with Clock (Cinderella)*  
1987  
C-Print  
76.2 × 101.6 cm ( 30 x 40 inches )  
Ed. 1/5 (+ 1 AP)
- 
- 15  **Ericka Beckman**  
*Taps (Industrial Series)*  
1986  
C-Print  
101.6 × 152.4 cm ( 40 x 60 inches )  
Ed. 1/5 (+ 1 AP)
- 
- 16  **Ericka Beckman**  
*Spoonful*  
1987  
C-Print  
102.2 × 76.8 cm ( 40 1/4 × 30 1/4 inches )  
Ed. 2/5 (+ 1 AP)
- 
- 17  **Ericka Beckman**  
*Expanded Studies no. 2 (You The Better)*  
1984/2015  
Oil stick and charcoal on paper  
132.1 × 81.3 cm ( 52 x 32 inches )
- 
- 18  **Ericka Beckman**  
*Expanded Studies no. 1 (You The Better)*  
1984/2015  
Oil stick and charcoal on paper  
132.1 × 81.3 cm ( 52 x 32 inches )
-

19



**Ericka Beckman**

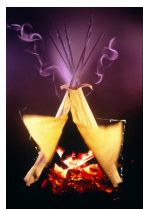
*Expanded Studies no. 3 (You The Better)*

1984/2015

Oil stick and charcoal on paper

132.1 × 81.3 cm ( 52 x 32 inches )

20



**Ericka Beckman**

*Signals (Hiatus)*

1991

C-Print

101.6 × 68.1 cm ( 40 x 26 3/4 inches )

Ed. 1/5 (+ 1 AP)

21



**Ericka Beckman**

*Scarecrow (Boundary Figures)*

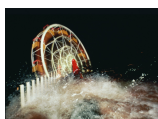
1989

C-Print

152.4 × 101.6 cm ( 60 x 40 inches )

Ed. 4/5 (+ 1 AP)

22



**Ericka Beckman**

*The Turn-Around (You The Better)*

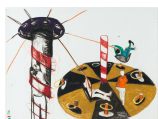
1980

C-Print

76.8 × 102.2 cm ( 30 1/4 x 40 1/4 inches )

Ed. 3/5 (+ 2 AP)

23



**Ericka Beckman**

*Study for Center of the Spin (You The Better)*

1983

Charcoal, oil stick and pencil on paper

88.9 × 116.8 cm ( 35 x 46 inches )

24



**Ericka Beckman**

*Tents in the Field (You The Better)*

1980

Oil stick, charcoal and pencil on paper

113 × 92.1 cm ( 44 1/2 x 36 1/4 inches )



25



**Ericka Beckman**

*Study for Spinning Gameboards*

1983

Oil stick, pen and pencil on paper

116.8 × 88.9 cm ( 46 x 35 inches )

26



**Ericka Beckman**

*Playing Field and Spin Study no. 1 (You The Better)*

1982

Charcoal, oil stick and pencil on paper

72.4 × 99.7 cm ( 28 1/2 × 39 1/4 inches )

27



**Ericka Beckman**

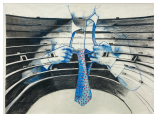
*Study for Slateman (You The Better)*

1982

Gouache and ink on paper

66 × 97.8 cm ( 26 x 38 1/2 inches )

28



**Ericka Beckman**

*Tension Building Concept Drawing*

2015

Charcoal, pastel, pen, and pencil on paper

83.8 × 121.9 cm ( 33 x 48 inches )

29



**Ericka Beckman**

*Study for Cinderella's Robots*

2015 (from 1985 notebook)

Charcoal, graphite and pastel on paper

Sheet 96.5 × 78.7 cm ( 38 x 31 inches )

Frame 116.8 × 99.1 × 6.4 cm ( 46 x 39 x 2 1/2 inches )

30



**Ericka Beckman**

*Study for Cinderella's Basement*

2015 (from 1985 notebook)

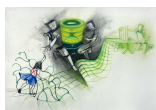
Charcoal, graphite and pastel on paper

Sheet 66 × 92.7 cm ( 26 x 36 1/2 inches )

Frame 86.4 × 124.5 × 7 cm ( 34 x 49 x 2 3/4 inches )

## Galerie Francesca Pia

31



**Ericka Beckman**

*Knot Dress (Cinderella)*

1995/2015

Charcoal and pastel on paper

76.2 × 94 cm ( 30 × 37 inches )

---

32



**Ericka Beckman**

*Study for Selectric (Industrial Series)*

2015 (from 1988 notebook)

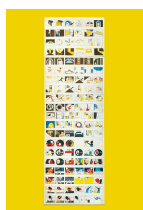
Charcoal, graphite and pastel on paper

Sheet 95.3 × 81.3 cm ( 37 1/2 × 32 inches )

Frame 116.8 × 99.1 × 6.4 cm ( 46 × 39 × 2 1/2 inches )

---

33



**Ericka Beckman**

*Out of Hand Storyboard*

1981

7 sheets, pencil and pen on paper

276.9 × 81.3 cm ( 109 × 32 inches )

---

34



**Ericka Beckman**

*Out of Hand House Model*

1981

C-Print

34.4 × 51.4 cm ( 13 1/2 × 20 1/4 inches )

Ed. 1/5 (+ 1 AP)

---

35



**Ericka Beckman**

*No. 1 (Nanotech Players)*

1989

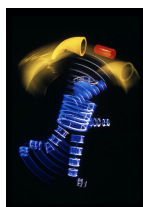
C-Print

101.6 × 152.4 cm ( 40 × 60 inches )

Ed. 4/5 (+ 1 AP)

---

36



**Ericka Beckman**

*No. 2 (Nanotech Players)*

1989

C-Print

152.4 × 101.6 cm ( 60 × 40 inches )

Ed. 2/5 (+ 1 AP)

---

## Galerie Francesca Pia

37



**Ericka Beckman**

*No. 3 (Nanotech Players)*

1989

C-Print

101.6 × 152.4 cm ( 40 x 60 inches )

Ed. 2/5 (+ 1 AP)

---

38



**Ericka Beckman**

*No. 4 (Nanotech Players)*

1989

C-Print

101.6 × 152.4 cm ( 40 x 60 inches )

Ed. 4/5 (+ 1 AP)

---

39



**Ericka Beckman**

*No. 5 (Nanotech Players)*

1989

C-Print

101.6 × 152.4 cm ( 40 x 60 inches )

Ed. 3/5 (+ 1 AP)

---

40



**Ericka Beckman**

*Super-8 Trilogy (We Imitate; We Break Up, The Broken Rule, Out of Hand)*

On view: *Out of Hand*, 1981

1978-1981

Super 8 to 16mm to HD file, sequenced lighting and sculptural props, 80'

Ed. 1/1 (+ 1 AP)

---

41



**Ericka Beckman**

*Reach Capacity*

2020

16mm to HD file, 15'

With installation, sculptural elements and a motorized rotating screen

Ed. 1/2

---