

# SCHINKEL PAVILLON e. V. AUSSTELLUNGSRAUM FÜR ZEITGENÖSSISCHE SKULPTUR

## Selected press photos captions



Ivana Bašić, *Belay My Light, the Ground Is Gone*, 2018. Wax, pink alabaster, blown glass, breath, dust, weight, oil paint, pressure, stainless steel. Courtesy the artist.

Ian Cheng, *Emissary Sunsets The Self*, 2017. Live simulation and story, infinite duration, color, sound. Courtesy the artist and Pilar Corrias, London and Gladstone Gallery, Brussels.

Joachim Bandau, *Schwarzes ruhendes Schlauchmonster*, 1972. Glass fiber reinforced polyester resin, pigmented, mannequin segments, C-hose couplings, vacuflex hose. Courtesy the artist and Neues Museum Nuremberg.



Ivana Bašić, *Belay My Light, the Ground Is Gone*, 2018. Wax, pink alabaster, blown glass, breath, dust, weight, oil paint, pressure, stainless steel. Courtesy the artist.

Ian Cheng, *Emissary Sunsets The Self*, 2017. Live simulation and story, infinite duration, color, sound. Courtesy the artist and Pilar Corrias, London and Gladstone Gallery, Brussels.

Joachim Bandau, *Schwarzes ruhendes Schlauchmonster*, 1972. Glass fiber reinforced polyester resin, pigmented, mannequin segments, C-hose couplings, vacuflex hose. Courtesy the artist and Neues Museum Nuremberg.

Diane Severin Nguyen, *For me, years*, 2023. LightJet C-print, custom steel frame. Courtesy the artist.

Diane Severin Nguyen, *Reunification Palace*, 2023. LightJet C-print, custom steel frame. Courtesy the artist.

Diane Severin Nguyen, *From Cynic to Saint*, 2023. LightJet C-print, custom steel frame. Courtesy the artist.

Joachim Bandau, *Wasserwerfer*, 1974. Glass fiber reinforced polyester resin, pigmented, mannequin segments, hose couplings, malleable cast iron rollers, 4 parts. Courtesy the artist and Neues Museum Nuremberg.



Joachim Bandau, *Schwarzes ruhendes Schlauchmonster*, 1972. Glass fiber reinforced polyester resin, pigmented, mannequin segments, C-hose couplings, vacuflex hose. Courtesy the artist and Neues Museum Nuremberg.

Diane Severin Nguyen, *For me, years*, 2023. LightJet C-print, custom steel frame. Courtesy the artist.

Diane Severin Nguyen, *Reunification Palace*, 2023. LightJet C-print, custom steel frame. Courtesy the artist.

Diane Severin Nguyen, *From Cynic to Saint*, 2023. LightJet C-print, custom steel frame. Courtesy the artist.



Joachim Bandau, *Wasserwerfer*, 1974. Glass fiber reinforced polyester resin, pigmented, mannequin segments, hose couplings, malleable cast iron rollers, 4 parts. Courtesy the artist and Neues Museum Nuremberg.

Sandra Muinga, *Love Language (3)*, 2023. Aluminum, steel, velcro. Courtesy the artist and Sammlung Haus N, Athens.

Sandra Muinga, *Love Language (2)*, 2023. Aluminum, steel, velcro. Courtesy the artist and Croy Nielsen, Vienna.



Diane Severin Nguyen, *For me, years*, 2023. LightJet C-print, custom steel frame. Courtesy the artist.  
 Diane Severin Nguyen, *Reunification Palace*, 2023. LightJet C-print, custom steel frame. Courtesy the artist.  
 Diane Severin Nguyen, *From Cynic to Saint*, 2023. LightJet C-print, custom steel frame. Courtesy the artist.  
 Joachim Bandau, *Schwarzes ruhendes Schlauchmonster*, 1972. Glass fiber reinforced polyester resin, pigmented, mannequin segments, C-hose couplings, vacuflex hose. Courtesy the artist and Neues Museum Nuremberg.



Ivana Bašić, *Belay My Light, the Ground Is Gone*, 2018. Wax, pink alabaster, blown glass, breath, dust, weight, oil paint, pressure, stainless steel. Courtesy the artist.





Fritz Lang, *Metropolis*, 1925/26. Maschinenmensch, WSM Art Metropolis, Walter Schulze-Mittendorf, Source: Stiftung Deutsche Kinemathek.

Sandra Mujinga, *Love Language (3)*, 2023. Aluminum, steel, velcro. Courtesy the artist and Sammlung Haus N, Athens.

Sandra Mujinga, *Love Language (2)*, 2023. Aluminum, steel, velcro. Courtesy the artist and Croy Nielsen, Vienna.



Fritz Lang, *Metropolis*, 1925/26. Maschinenmensch, WSM Art Metropolis, Walter Schulze-Mittendorf, Source: Stiftung Deutsche Kinemathek.



Mike Kelley, *City 17*, 2011. Tinted urethane resin on illuminated base. Courtesy Angel Nieto. ©VG Bild-Kunst, Bonn 2023.

Mike Kelley, *City 5*, 2007. Mixed media on illuminated base. Courtesy Ghislaine Hussenot, Paris. ©VG Bild-Kunst, Bonn 2023.

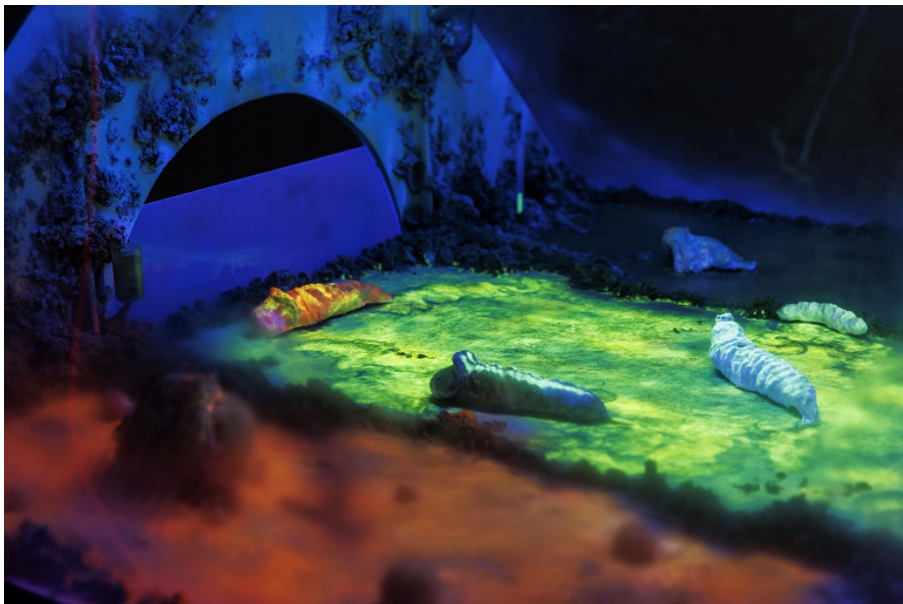
Mary Shelley, *Frankenstein*, 1818.



Sidsel Meineche Hansen, *SECOND SEX WAR ZONE*, 2016. CGI animation in VR format, PC, headset, vegan leather beanbag. Courtesy the artist and Rodeo, London.



Mike Kelley, *Kandor 5*, 2007. Mixed media on illuminated base with video and sound. Courtesy Sammlung Ringier, Zurich. ©VG Bild-Kunst, Bonn 2023.



Tetsumi Kudo, *Cultivation by Radioactivity in the Electronic Circuit*, 1968. Mixed Media, 2 parts. Courtesy the artist and Louisiana Museum of Modern Art, Humlebaek. ©VG Bild-Kunst, Bonn 2023.



Mike Kelley, *Kandor 5*, 2007. Mixed media on illuminated base with video and sound. Courtesy Sammlung Ringier, Zurich. ©VG Bild-Kunst, Bonn 2023.

Ovartaci, *Untitled*, no date (early 20th century). Gouache on paper. Courtesy Museum Ovartaci, Aarhus. ©VG Bild-Kunst, Bonn 2023.



Ovartaci, *Untitled*, no date (early 20th century). Gouache on paper. Courtesy Museum Ovartaci, Aarhus. ©VG Bild-Kunst, Bonn 2023.





Matthew Angelo Harrison, *Touched by an Angel*, 2021. Wooden sculpture, polyurethane resin, stainless steel, anodized aluminum. Courtesy the artist and Danny Rimer.

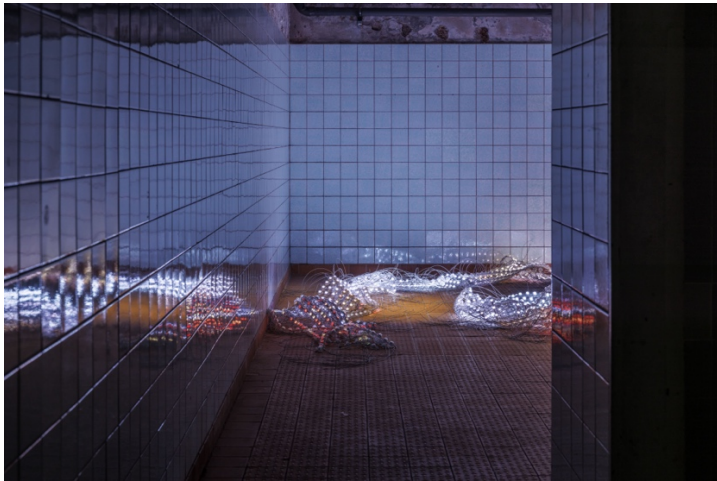


Mike Kelley, *City 17*, 2011. Tinted urethane resin on illuminated base. Courtesy Angel Nieto. ©VG Bild-Kunst, Bonn 2023.

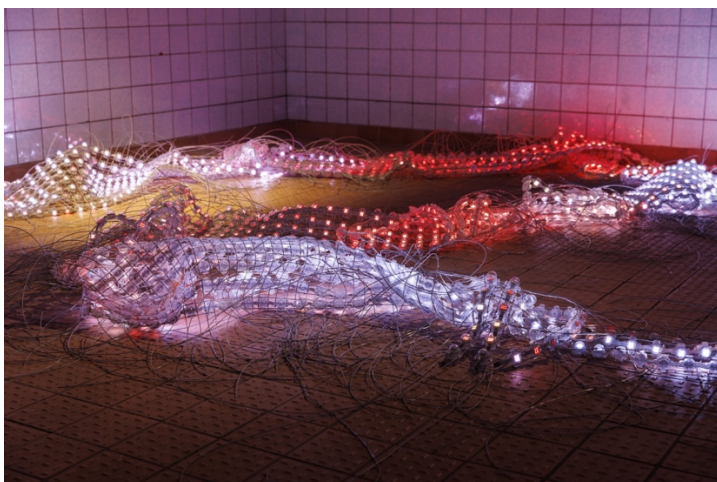




David Cronenberg, *Instruments for operating on mutant women (from Dead Ringers)*, 1988. Nickel plated brass. Courtesy the artist and TIFF, Toronto.



WangShui, *Fundamental Attribution Error*, 2023. LED mesh, AI-generated video. Courtesy the artist and High Art, Paris.



WangShui, *Fundamental Attribution Error*, 2023. LED mesh, AI-generated video. Courtesy the artist and High Art, Paris.



Nour Mobarak, *Reproductive Logistics 3.1 – 3.7*, 2023. Textile, straw, apple wood, *Pleurotus citrinopileatus* mycelium (courtesy Dirfis), *Trametes versicolor* mycelium, oil paint, plastic, latex paint. Courtesy the artist.  
 Diane Severin Nguyen, *Raindrop Bodywork*, 2019. LightJet chromogenic print, Courtesy the artist and Galerie Molitor, Berlin.  
 Diane Severin Nguyen, *Intersectional*, 2019. LightJet chromogenic print. Courtesy the artist and Dorothy Zhang.



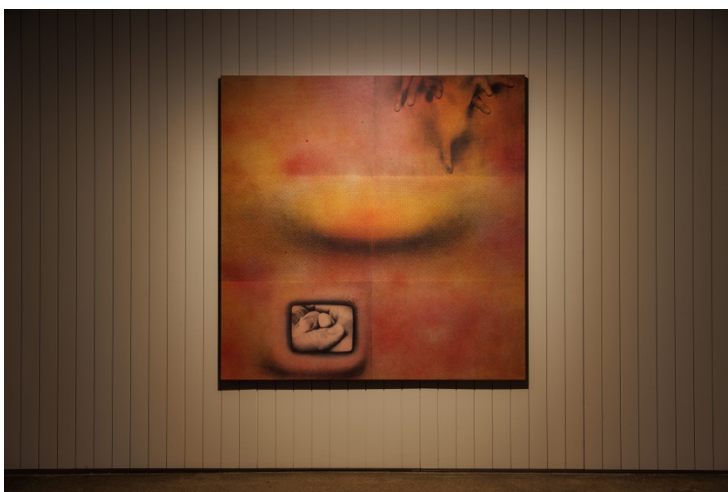
Nour Mobarak, *Reproductive Logistics 3.1 – 3.7*, 2023. Textile, straw, apple wood, *Pleurotus citrinopileatus* mycelium (courtesy Dirfis), *Trametes versicolor* mycelium, oil paint, plastic, latex paint. Courtesy the artist.



Nour Mobarak, *Reproductive Logistics 2*, 2021. Glass vials, injection pins, syringe, plastic. Courtesy the artist and Miguel Abreu Gallery.



Analisa Teachworth, *Tribute Pallet*, 2019. Multi-media installation with architecture, sculpture, video, sound. Courtesy the artist.



Tishan Hsu, *Fingerpainting 2*, 1994. Silkscreen ink, acrylic on canvas. Courtesy the artist and Miguel Abreu Gallery, New York. ©VG Bild-Kunst, Bonn 2023.





Tetsumi Kudo, *Cultivation by Radioactivity in the Electronic Circuit*, 1968. Mixed Media, 2 parts. Courtesy the artist and Louisiana Museum of Modern Art, Humlebaek. ©VG Bild-Kunst, Bonn 2023.

Tishan Hsu, *Fingerpainting 2*, 1994. Silkscreen ink, acrylic on canvas. Courtesy the artist and Miguel Abreu Gallery, New York. ©VG Bild-Kunst, Bonn 2023.

Mike Kelley, *City 17*, 2011. Tinted urethane resin on illuminated base. Courtesy Angel Nieto. ©VG Bild-Kunst, Bonn 2023.

Mike Kelley, *City 5*, 2007. Mixed media on illuminated base. Courtesy Ghislaine Hussenot, Paris. ©VG Bild-Kunst, Bonn 2023.

Mike Kelley, *Kandor 5*, 2007. Mixed media on illuminated base with video and sound. Courtesy Sammlung Ringier, Zurich. ©VG Bild-Kunst, Bonn 2023.



Suzanne Treister, *Rosalind Brodsky's Electronic Time Travelling Costume to rescue her Grandparents from the Holocaust*, 1996/7. Mixed media. Courtesy the artist and Annely Juda Fine Art, London. ©VG Bild-Kunst, Bonn 2023.



