



Su Yu-Xin, *Passage of Pink (CPRR tunnel No. 3)*, 2022, mexican cochineal lake pigment, madder root lake pigment, ochre, soil, orpiment, indigo lake pigment, DuPont titanium dioxide, lazurite and other hand-made pigments on flax stretched over frame, 250 x 145 x 5.5 cm. Courtesy of the artist



Su Yu-Xin, *Moon Tan (CPRR tunnel No. 3)*, 2022, orange clay, iron oxide, indigo lake pigment, sulfur, clam fossil powder, pink coral (*Tubipora musica*), soil, kaolin clay and other hand-made pigments on flax stretched over frame, 250 x 145 x 5.5 cm. Courtesy of the artist



Su Yu-Xin, *The Migration of Shadow (CPRR tunnel No. 4)*, 2022, china fir charcoal powder, sulfur, soil, lazurite, plastic powder, Thangka pigment, clam fossil powder, titanium dioxide powder, oil and other hand-made pigments on flax stretched over frame, 250 x 145 x 5.5 cm. Courtesy of the artist



Su Yu-Xin, *Light Materials (CPRR tunnel No. 4)*, 2022, sulfur, orpiment, ochre, various colors of soil, white crystal, honey, malachite, pink coral (*Tubipora musica*) and other hand-made pigments on flax stretched over frame, 250 x 145 x 5.5 cm. Courtesy of the artist



Su Yu-Xin, *Emerald (Gukut Cliff)*, 2022, conch shells, azurite, soil, granite, lazurite, amazonite stone, camphor tree lake pigment, orpiment, various tones of ochre, hematite, malachite, cinnabar, indigo lake pigment, alum, bleached coral bone, realgar, green sandstone, purple shale, coal waste, earth pastels, synthetic copper carbonate and other hand-made pigments on board, 225 x 130 x 5.5 cm. Courtesy of the artist



Su Yu-Xin, *Honey (Santa Monica Long Wharf)*, 2022, orpiment, sulfur, pyrite, safflower oil, hematite, zinc oxide powder, various colors of soil, chalk, lazurite, malachite pigment, ochre and other hand-made pigments on flax stretched over frame, 250 x 145 x 5.5 cm. Courtesy of the artist



Su Yu-Xin, *A Place of the Coming and Going (Snow Shed of CPRR Near Cisco)*, 2022, mexican cochineal lake pigment, various colors of soil, DuPont titanium dioxide powder, sand, bleached coral bone, hematite, sulfur, malachite, and other hand-made pigment of flax stretched over frame, 260 x 150 x 5.5 cm. Courtesy of the artist



Su Yu-Xin, *Wine-dark Sea #2 (Elephant Trunk Tunnel)*, 2022, plastic powder, camphor tree lake pigment, white pearls, clam fossil powder, various colors of soil, hematite pigment, granite, lazurite, indigo lake pigment, calcite, synthetic mauveine and violet, and other hand-made pigments on flax stretched over curved panels, 320 x 180 x 5.5 cm. Courtesy of the artist



Su Yu-Xin, *Mountain of Gold (Ch'ing-shui Cliff)*, 2021, sulfur, camphor tree pigment, realgar, plant-extracted ink, titanium dioxide powder, seashells, acrylic paint and other hand-made pigments on board, 200 x 110 x 5.5 cm. Courtesy of the artist



Su Yu-Xin, *Water Close to Land (Coastal Road on the East Side of Taiwan)*, 2022, conch shells, lazurite, camphor tree lake pigment, orpiment, mandarin melon berry lake pigment, various colors of soil, ochre, indigo lake pigment, alum, realgar and other hand-made pigments on board, 232 x 130 x 40 cm. Courtesy of the artist



Su Yu-Xin, *Smoke Engulfs*, 2022, various colors of volcanic ashes, soil, iwa-enogu, clam fossil powder, ceramic powders, plaster powders, soil, sand and other hand-made pigments on flax stretched over wooden frame, 216 x 174 x 5.5 cm. Courtesy of the artist



Su Yu-Xin, *Cloud Nest*, 2022, soil, iwa-enogu, clam fossils, various colors of volcanic ashes, cochineal lake pigment, ceramic powders, plaster powders and other hand-made pigments on flax stretched over wooden frame, 216 x 174 x 5.5 cm. Courtesy of the artist



Su Yu-Xin, *Mountain in Boil*, 2022, realgar, sulfur, orpiment, cinnabar, black volcanic ash, cochineal lake pigment, purple shale, coal dust, and other hand-made pigments on flax stretched over wooden frame, 220 x 170 x 5.5 cm. Courtesy of the artist



Su Yu-Xin, *Hill Front*, 2022, clam fossil, soil, ceramic powder, sulfur, DuPont titanium dioxide powder, iwa-enogu, malachite and other hand-made pigments on hand-shaped wood, 200 x 110 x 5.5 cm. Courtesy of the artist



Su Yu-Xin, *Back Hill*, 2022, hematite, bleached coral bone, green sandstone, yellow ochre, ink, pink coral (*Tubipora musica*) and other hand-made pigments on hand-shaped wood, 200 x 110 x 5.5 cm. Courtesy of the artist



Su Yu-Xin, *Study of Rubbles #1*, 2021, sand, soil, seashell, oil, plant-extracted ink, realgar and other hand-made pigments on hand-shaped wood, 19 x 30.3 x 4.2 cm. Courtesy of the artist



Su Yu-Xin, *Study of Rubbles #2*, 2021, sand, soil, white crystal, white sugar, honey and other hand-made pigments on hand-shaped wood, 19 x 30.3 x 4.2 cm. Courtesy of the artist



Su Yu-Xin, *White out of the Air*, 2022, nitrate, soil, turquoise, plastic powder and acrylic on wood, 28 x 17 x 3.3 cm. Courtesy of the artist



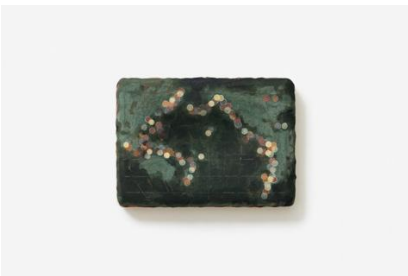
Su Yu-Xin, *A Landscape of Crafting White (2018-2021)*, 2021, conch shells, kaolin clay, clam fossil powder, calcium carbonate powder, titanium dioxide, red clay and other hand-made pigments on board, 15 x 18.5 x 4 cm. Courtesy of the artist



Su Yu-Xin, *Coloring Clouds*, 2022, white pearls, bleached corals bone, amazonyte stone, clamshell powder, yellow jade, white crystal, animal skin glue, acrylic paint and soil on hand-shaped wood, 22.1 x 15.1 x 3.9 cm. Courtesy of the artist



Su Yu-Xin, *Collecting Yellows 2019-2021*, 2021, lithargite (massicot), camphor tree lake pigment, orpiment, mandarin melon berry lake pigment, eggshells, sulfur, soil and other hand-made pigments on hand-shaped wood, 25 x 18 x 3.2 cm. Courtesy of the artist



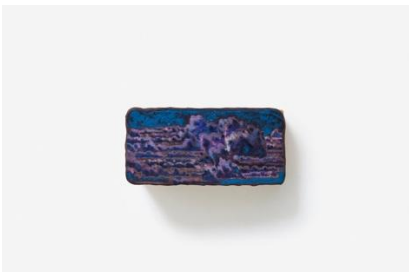
Su Yu-Xin, *Nocturnal (The Ring of Fire)*, 2022, various colors of volcanic ashes and mud, hand-made watercolors, plant-extracted ink, soil on hand-shaped wood, 25 x 18 x 3.2 cm. Courtesy of the artist



Su Yu-Xin, *Chess (The Ring of Fire)*, 2022, various colors of volcanic ashes, mud and soil on hand-shaped wood, 25.8 x 18.1 x 4.3 cm. Courtesy of the artist



Su Yu-Xin, *Waves Mimic Cloud*, 2022, soil, kaolin clay, acrylic paint, soap base, ink and other hand-made pigments on hand-shaped reclaimed wood, 14 x 8 x 6.1 cm. Courtesy of the artist



Su Yu-Xin, *Cabin Pressure #2*, 2022, madder root lake pigment, ochre, soil, clam fossil powder, purple shale, plastic powder on hand-shaped wood, 15 x 8.2 x 5.5 cm. Courtesy of the artist



Su Yu-Xin, *Impression of Places*, 2022, lithargite (massicot), sulfur, white pearls, camphor tree lake pigment, sapan wood lake pigment, realgar, blue corals, hematite, malachite and other hand-made pigment on hand-shaped wood, 18 x 25 x 3 cm. Courtesy of the artist





Su Yu-Xin, *The Various Brightness of Stars*, 2022, jade, white pearls, calcite, titanium dioxide powder, sulfur, turquoise, plastic powder, soil and other hand-made pigment on reclaimed wood, 16 x 19 x 4.1 cm. Courtesy of the artist



Su Yu-Xin, *Rubies*, 2022, cinnabar, volcanic ash, indigo lake pigment on hand-shaped wood, 16.4 x 12.4 x 4.2 cm. Courtesy of the artist



Su Yu-Xin, *Summer Triangle (Night)*, 2022, woad lake pigment, caustic lime powder, titanium dioxide powder, ink, acrylic paint and car paint on hand-made pigments on hand-shaped reclaimed wood, 16.2 x 7.5 x 5.9 cm. Courtesy of the artist



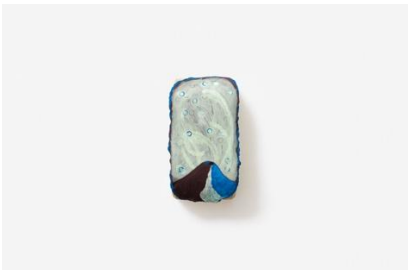
Su Yu-Xin, *Summer Triangle (Day)*, 2022, clam fossil powder, lazurite, soil, white sugar, acrylic paint and other hand-made pigments on hand-shaped reclaimed wood, 16.1 x 7.4 x 5.9 cm. Courtesy of the artist



Su Yu-Xin, *A Shapeless Heart*, 2022, indigo lake pigment, alum, emerald, iwa-enogu, soil, clam fossil powder, gum, red clay and other hand-made pigments on hand-shaped board, 18 x 15 x 4 cm. Courtesy of the artist



Su Yu-Xin, *Pearl White*, 2022, white pearls, cinnabar, soil and other pigments on hand-shaped wood, 15.7 x 8.1 x 5.6 cm. Courtesy of the artist



Su Yu-Xin, *Marking the Air*, 2022, soil, volcanic ash, plastic powder, ink and other pigments on hand-shaped wood, 15 x 8.2 x 5.1 cm. Courtesy of the artist



Su Yu-Xin, *Mud Map*, 2022, various colors of soil, sand and other hand-made pigments on hand-shaped wood, 30 x 15.2 x 4.5 cm. Courtesy of the artist



Su Yu-Xin, *Costal Blackness*, 2022, graphite powder, black tourmaline, coal waste, china fir charcoal, black basalt, ilmenite, black marble, titanium dioxide powder and ocher on hand-shaped wood, 24.2 x 17.2 x 3.1 cm. Courtesy of the artist



Su Yu-Xin, *Study of a Cliff*, 2022, hematite, iwa-enogu, gum, indigo lake pigment, clam fossil powder, hand-made watercolor, acrylic paint and other pigments on hand-shaped wood, 19.5 x 18.5 x 4.5 cm. Courtesy of the artist