

Crève-cœur

Portraits

06.04.23 — 28.05.23

—

Berenice Abbott

Hans Bellmer

Mathis Collins

Florence Henri

Kyoko Idetsu

Shana Moulton

Jonny Negron

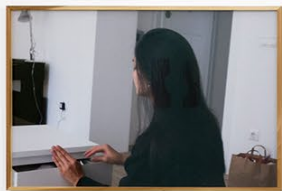
Yu Nishimura

Francis Picabia

Louise Sartor

Niklas Taleb

Crèveœur



Exhibition view, *Portraits*, Crèveœur, Paris, 2023. Photo: Aurélien Mole

Crèveœur



Niklas Taleb

Modern life is still rubbish, modern rubbish is still life (2), 2018

Digital c-print, artist frame, 71 × 105 cm — Ed. 1/3 + 1 AP

Courtesy of the artist and Crèveœur, Paris. Photo: Alexei Kostromin

Crève-cœur



Exhibition view, *Portraits*, Crève-cœur, Paris, 2023. Photo: Aurélien Mole

Crèveœur



Francis Picabia

Sans titre, circa 1929

Ink and pencil on paper, 31,3 × 24,2 cm | 50 × 42,4 cm (framed)

Courtesy of Galerie 1900-2000 and Crèveœur, Paris. Photo: Alexei Kostromin

Crève-cœur



Kyoko Idetsu

Kind person, 2023

Oil on canvas, 116,7 × 91 cm

Courtesy of the artist, Nonaka-Hill and Crève-cœur, Paris. Photo: Alexei Kostromin

Crèveœur



Exhibition view, *Portraits*, Crèveœur, Paris, 2023. Photo: Aurélien Mole

Crèveœur



Berenice Abbott

Portrait de Jacques-André Boiffard, circa 1925

Vintage silver print, 22 × 15 cm | 35,5 × 40,5 cm (framed)

Courtesy of Galerie 1900-2000 and Crèveœur, Paris. Photo: Alexei Kostromin

Crèveœur



Exhibition view, *Portraits*, Crèveœur, Paris, 2023. Photo: Aurélien Mole

Crèvecœur



Shana Moulton

Moods, 2015

Collage on paper, 38,5 × 29 cm

Courtesy of the artist and Crèvecœur, Paris. Photo: Alexei Kostromin

Crèveœur



Kyoko Idetsu

Calcium (Ca), 2023

Oil on canvas, 45,5 × 27.3 cm

Courtesy of the artist, Nonaka-Hill and Crèveœur, Paris. Photo: Alexei Kostromin

Crèveœur



Hans Bellmer

Sans titre, circa 1925

Pencil on paper, 35 × 24,5 cm | 50,5 × 42 cm (framed)

Courtesy of Galerie 1900-2000 and Crèveœur, Paris. Photo: Alexei Kostromin

Crève-cœur



Exhibition view, *Portraits*, Crève-cœur, Paris, 2023. Photo: Aurélien Mole

Crèveœur



Yu Nishimura

girl with glasses, 2022

Oil on canvas, 194 × 130.3 cm

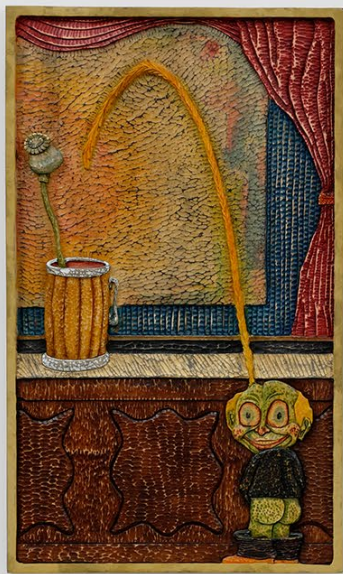
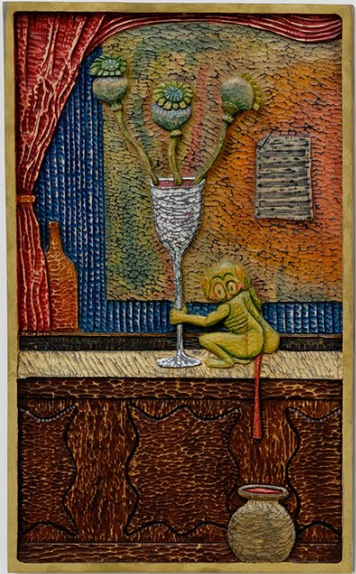
Courtesy of the artist and Crèveœur, Paris. Photo: Alexei Kostromin

Crèveœur



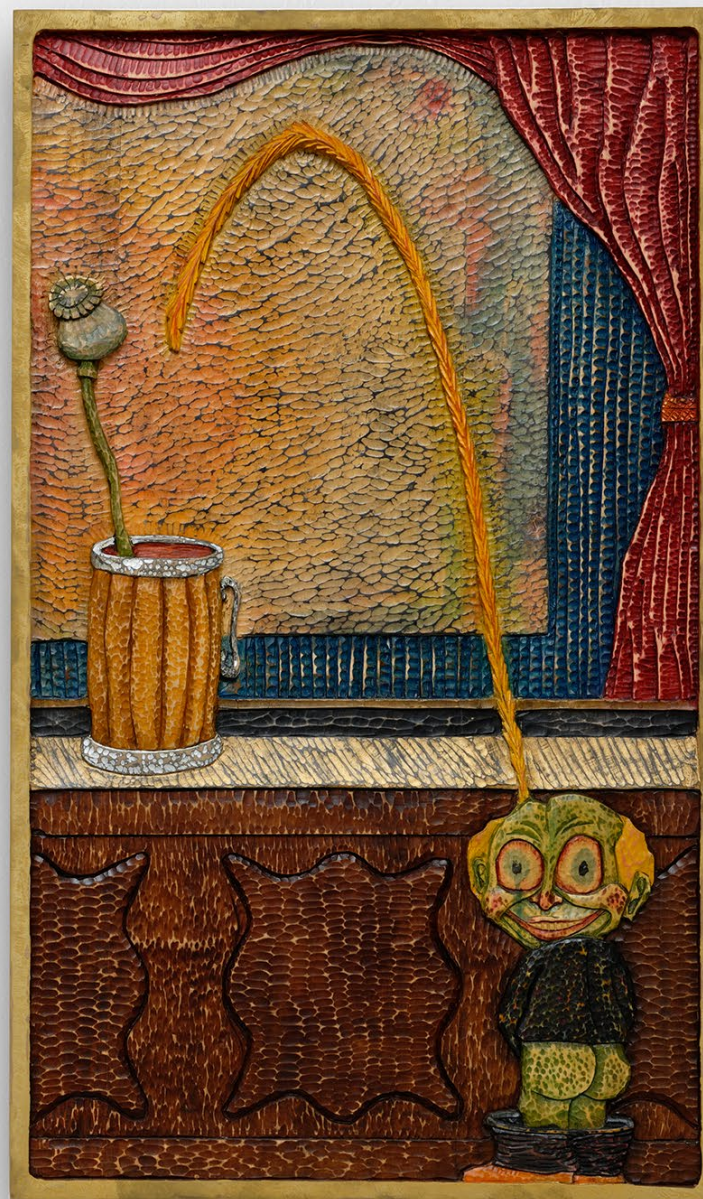
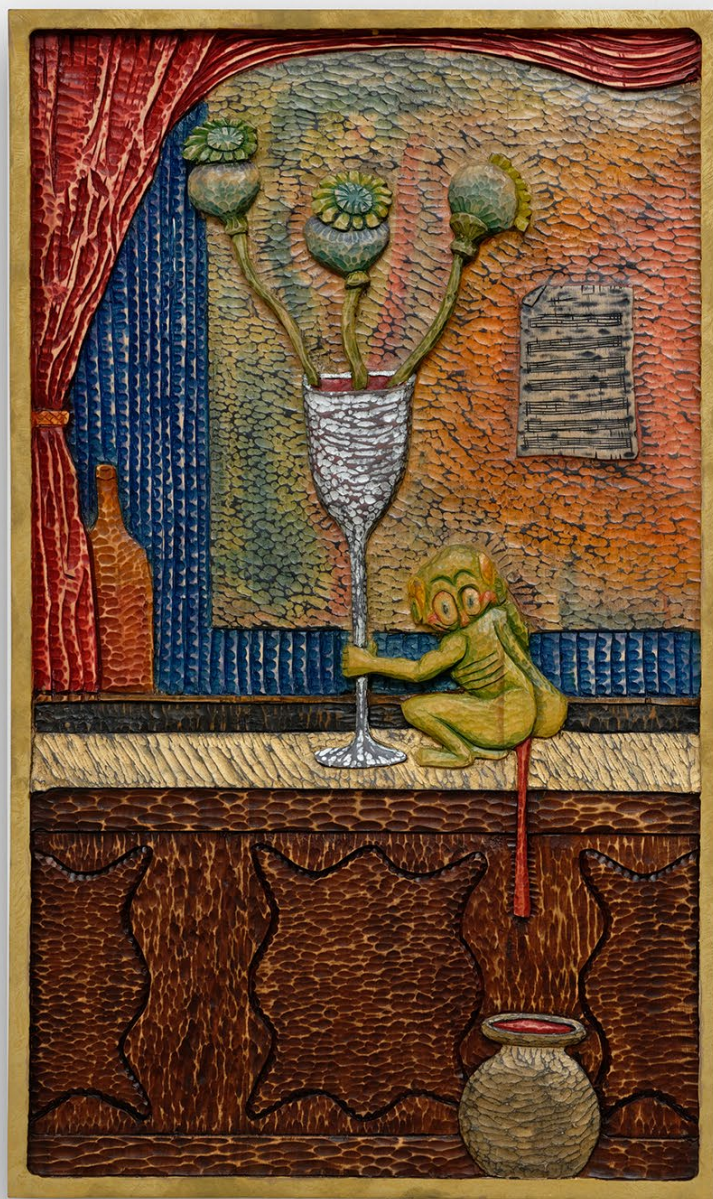
Exhibition view, *Portraits*, Crèveœur, Paris, 2023. Photo: Aurélien Mole

Crèveœur



Exhibition view, *Portraits*, Crèveœur, Paris, 2023. Photo: Aurélien Mole

Crève-cœur

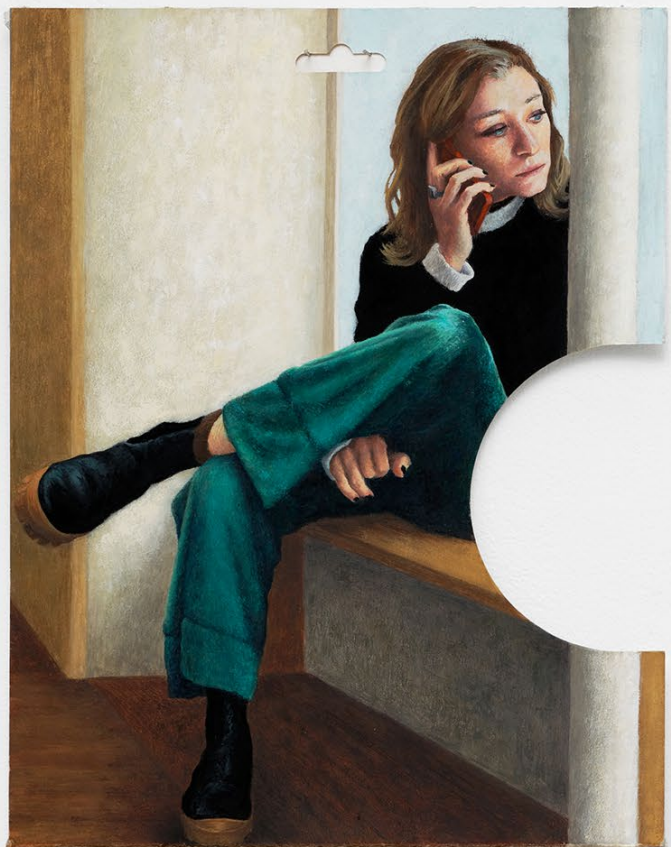


Mathis Collins, *Anonymes*, 2020

Linden wood, wood tint, acrylic varnish, copper pigments, brass pigments, 90 × 110 cm

Courtesy of the artist and Crève-cœur, Paris. Photo: Aurélien Mole

Crèveœur



Louise Sartor

Dealers, 2023

Gouache on cardboard, diptych, 31 × 68,5 cm

Courtesy of the artist and Crèveœur, Paris. Photo: Aurélien Mole

Crève-cœur



Exhibition view, *Portraits*, Crève-cœur, Paris, 2023. Photo: Aurélien Mole

Crèveœur



Jonny Negron

Edges of Illusion, 2023

Acrylic on linen, 106,5 × 81 × 4 cm

Courtesy of the artist and Crèveœur, Paris. Photo: Alexei Kostromin

Crèvecœur



Florence Henri

Composition, Portrait de Pierre Minet, 1938

Vintage silver contact print, 12,2 × 9,2 cm | 30,6 × 33,3 cm (framed)

Courtesy of Galerie 1900-2000 and Crèvecœur, Paris. Photo: Alexei Kostromin

Crèveœur



Exhibition view, *Portraits*, Crèveœur, Paris, 2023. Photo: Aurélien Mole

Crèveœur



Hans Bellmer

Portrait de femme, 1948

Pencil and heightened gouache on paper, 27,5 × 22,5 cm | 37 × 32 cm (framed)
Courtesy of Galerie 1900-2000 and Crèveœur, Paris. Photo: Alexei Kostromin