

Galerie Francesca Pia

1



James Benning

After Missouri Pettway

2013

Stained glass, lead came, zinc, tin, lead; denim, corduroy, burlap; ink on paper in artist's frame

Glass work 63 × 62.7 cm

Quilt 213 × 152 cm

Framed text work 51.2 × 41.4 cm

2



Anonymous

Wedding bedcover, Guizhou, China

c. 1900

Recycled cotton, two sided

140 × 105 cm

3



Anonymous

Wedding bedcover, Guizhou, China

c. 1900

Recycled cotton, two sided

129 × 95 cm

4



Anonymous

Asante woman's cloth

1920–1950

Asante Kente cloth from Ghana, indigo and white cotton, strips sewn together, and embroidered with traditional motifs, used

167 × 112 cm

5



Ulrike Müller

Rug (gato verde)

2015

Wool handwoven in the workshop of Jerónimo and Josefina Hernández Ruiz, Teotitlán del Valle, Oaxaca, Mexico

162 × 122 cm

Ed. 7 + 3 AP

6



JB Blunk

Untitled – Plate


c. 1990

Ceramic


30.5 × 17.8 cm

Galerie Francesca Pia

- 7  **JB Blunk**
Untitled – Plate
c. 1990
Ceramic
30.5 × 30.5 cm
-

- 8  **JB Blunk**
Untitled – Pair of Cups
c. 1975
Ceramic
11 × 9 cm
12.7 × 7.6 cm
-

- 9  **JB Blunk**
Untitled – Plate
c. 1990
Ceramic
35.6 × 30.5 cm
-

- 10  **JB Blunk**
Pillow
c. 1975
Ceramic
23.5 × 23.5 cm
-

- 11  **Yukari Hirotsu**
Nanban Yakijime pottery
Clay plate
Diameter 19 cm
-

- 12  **Yukari Hirotsu**
Nanban Yakijime pottery
Clay plate
-

Galerie Francesca Pia

13



Anonymous

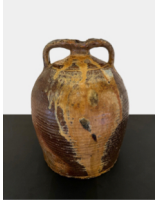
Grès de Puisaye Jar

Late 18th / early 19th century

Partly ash-glazed stoneware from Puisaye, France

35 × 25 cm

14



Anonymous

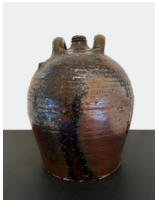
Grès de Puisaye Pot

Late 18th / early 19th century

Partly ash-glazed stoneware from Puisaye, France

26 × 21 cm

15



Anonymous

Grès de Puisaye Pot

Late 18th / early 19th century

Partly ash-glazed stoneware from Puisaye, France

27 × 24 cm

16



Atelier E.B with Marc Camille Chaimowicz

AP 3 of Ed. 20 + 10 AP

2012

3 silkscreen prints on cotton fabric

each 106 × 80 cm

AP 3 of Ed. 20 + 10 AP

17



Kazunori Hamana

Tsubo

2022

Ceramic

58 × 64 × 60 cm

18



Mai-Thu Perret

Untitled

2015

Haute lisse hand woven wool tapestry

200 × 150 cm

Galerie Francesca Pia

19



Anonymous

Bamana/Fulani blanket

1950s

Bamana or Fulani weaver from Mali in indigo blue with variations

280 × 220 cm

20



Anonymous

Hanakago (Flower Basket)

Showa era (1926–1989)

Hanakago flower basket, lacquered and woven bamboo

47 × 21 × 21 cm

21



Anonymous

Hanakago (Flower Basket)

Showa era (1926–1989)

Hanakago flower basket, with symmetrical tight weaving and bamboo branch handle

43 × 17 × 13.5 cm

22



Anonymous

Hanakago (Flower Basket)

Meiji era / early Taisho era (1868–1926)

Hanakago two-tone bamboo flower basket, otoshi red lacquered bamboo inner vase

52 × 20 × 17 cm

23



Mai-Thu Perret

Abnormally avid II

2019

Glazed ceramics, steel

35 × 48 × 36 cm

24



Anonymous

Chaff sieve

n.d.

Woven willow basket, Bern, Switzerland

100 × 80 × 25 cm

Galerie Francesca Pia

25



Anonymous
Boro futonji, Japan
Meiji era (1868–1912)
Recycled cotton, two sided
216 × 187 cm

26



Sofu Teshigahara
Untitled
1950s–1970s
Wood, brass
90 × 83 cm

27



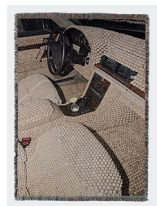
Anonymous
Dry Ikebana by Sogetsu teacher Lea Ruprecht, Zurich
2022
Ceramic vase, dried branches, laquered bamboo, tape

28



Arrange Whatever Pieces Come Your Way
Quilt 39
2022
Cotton, silk
237 × 170 cm

29



Bless
Saunariderinterior Blanket
2022
Woven cotton blanket with fringed edge and BLESS engraved
logo button
210 × 150 cm

30



Bless
N°72 Jeansified Object Waterbottle
2022
PET water bottle covered with denim fabric

Galerie Francesca Pia

31



Bless

N°72 Jeansified Object Spraybottle

2022

PET spray bottle covered with denim fabric

32



Bless

N°72 Jeansified Object Handledbottle

2022

PET bottle with handle covered with denim fabric

33



Bless

Pillow with pockets for books, remote control, phone, or else..

N°75 Slitcushion Vintage Denim

2022

Vintage Denim, Shell: 100% Cotton / Filling: 100% Polyester

34



James Benning

On Paradise Road

2020

Single-channel HD video installation, 75 min

Ed. 1/3
