

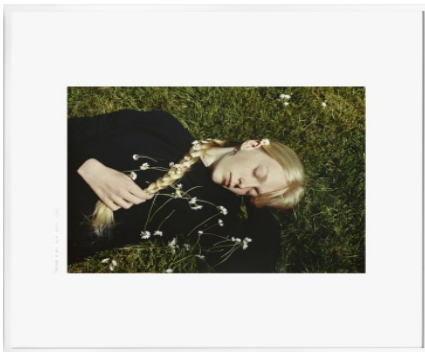
MAXIMILLIAN WILLIAM

47 MORTIMER STREET, LONDON, W1W 8HJ
info@maxmillianwilliam.com | T: +44 (0) 207 998 4054

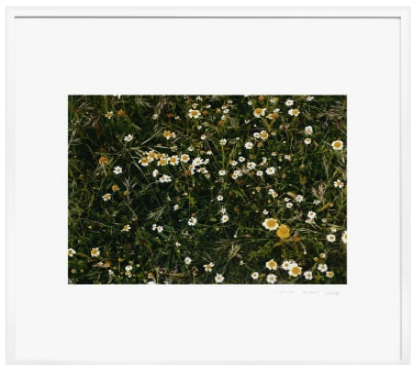
COCO CAPITÁN
NAÏVY: IN FIFTY (DEFINITIVE) PHOTOGRAPHS



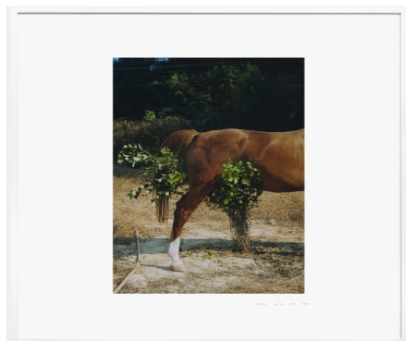
A bigger silence to live within, 2022
C-Type Analogue Handprint
37.5 x 50 cm



Young sailor with sun & daisies, 2022
C-Type Analogue Handprint
37.5 x 50 cm



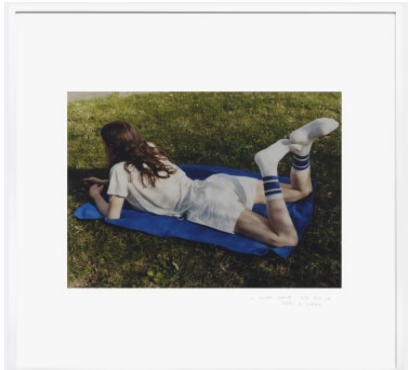
Daisies without sailor, 2022
C-Type Analogue Handprint
37.5 x 50 cm



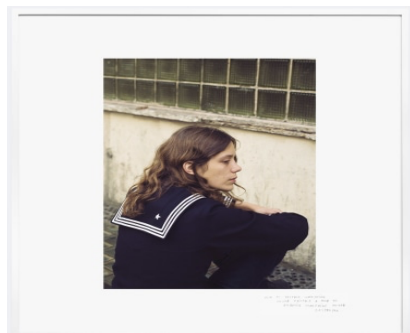
Majorcan horse with itch, 2022
C-Type Analogue Handprint
50 x 37.5 cm



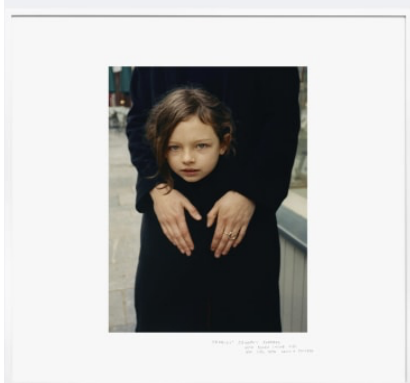
A backwards dream in which tall trees grew to become seeds, 2022
C-Type Analogue Handprint
37.5 x 50 cm



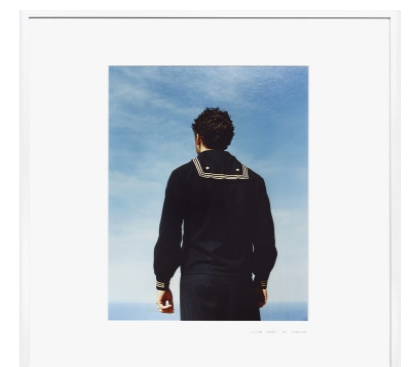
A sailor sunday with blue in socks over blue towel, 2022
C-Type Analogue Handprint
37.5 x 50 cm



How to destroy something that never existed & how to rebuild something never destroyed, 2022
C-Type Analogue Handprint
50 x 37.5 cm



Frances' grandma's funeral, with young sailor girl who says both Hello & Goodbye, 2022
C-Type Analogue Handprint
50 x 37.5 cm



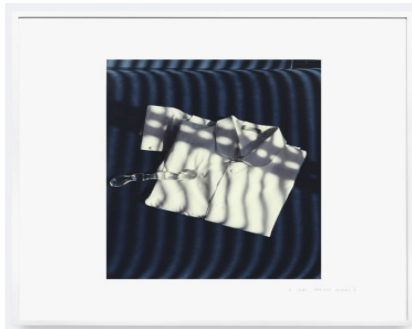
Lost sailor looking at horizon, 2022
C-Type Analogue Handprint
50 x 37.5 cm



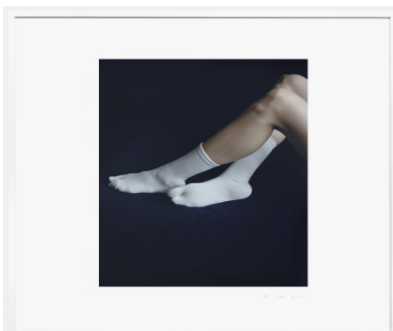
The agony without the ecstasy, 2022
C-Type Analogue Handprint
50 x 37.5 cm



A very present absence I, 2022
C-Type Analogue Handprint
50 x 37.5 cm



A very present absence II, 2022
C-Type Analogue Handprint
50 x 37.5 cm



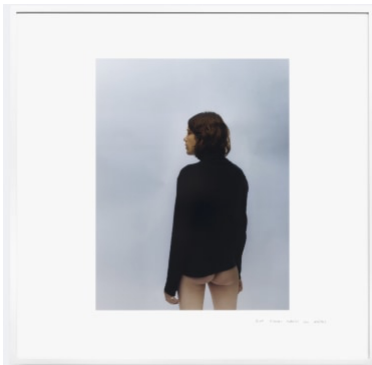
My tabi blues, 2022
C-Type Analogue Handprint
50 x 37.5 cm



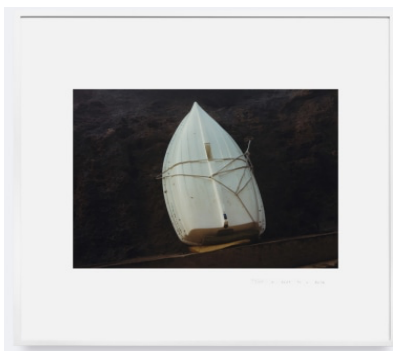
Blue dream within a dream, 2022
C-Type Analogue Handprint
50 x 37.5 cm



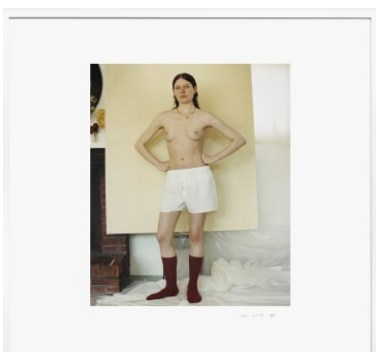
Flora washes her hands, and there flowers
grow, 2022
C-Type Analogue Handprint
50 x 37.5 cm



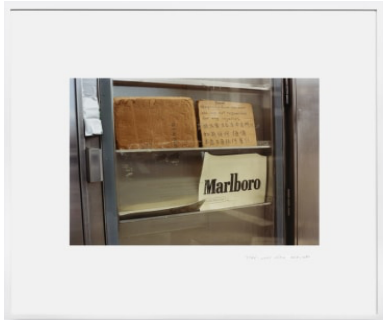
Blue echoes turning into whites, 2022
C-Type Analogue Handprint
50 x 37.5 cm



Tying a boat to a rock, 2022
C-Type Analogue Handprint
37.5 x 50 cm



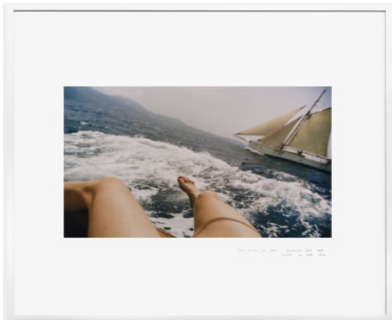
Mami sailor boy, 2022
C-Type Analogue Handprint
50 x 37.5 cm



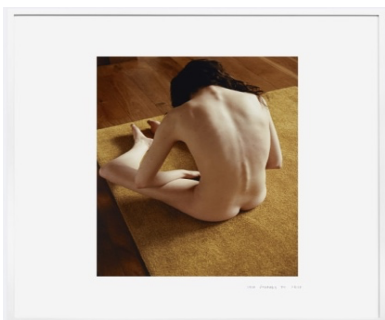
Stay away with Marlboro, 2022
C-Type Analogue Handprint
37.5 x 50 cm



Norfolk tall flowers for mami sailor, 2022
C-Type Analogue Handprint
50 x 37.5 cm



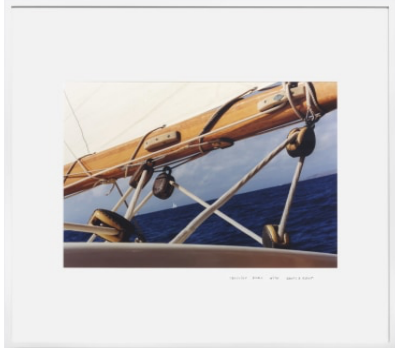
The edge of me merging into the edge of the sea, 2022
C-Type Analogue Handprint
37.5 x 50 cm



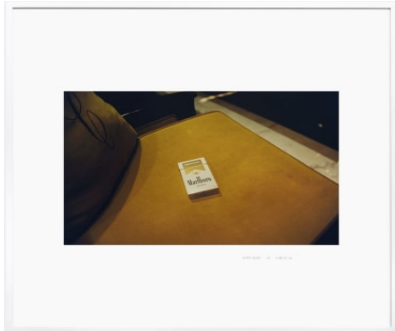
Self journey to self, 2022
C-Type Analogue Handprint
50 x 37.5 cm



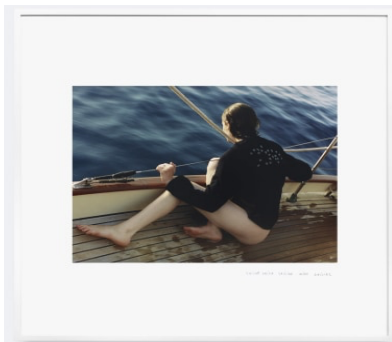
Uniform for a lost loser, 2022
C-Type Analogue Handprint
50 x 37.5 cm



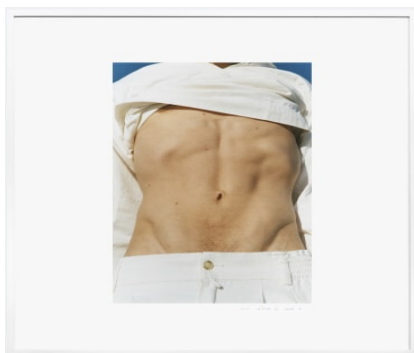
Crossing blues with knots & knot, 2022
C-Type Analogue Handprint
37.5 x 50 cm



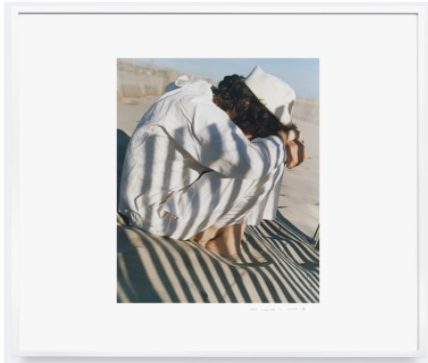
Marlboro in Carlyle, 2022
C-Type Analogue Handprint
37.5 x 50 cm



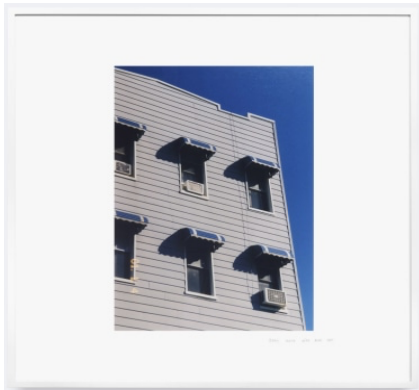
Chica sailor sailing with daisies, 2022
C-Type Analogue Handprint
37.5 x 50 cm



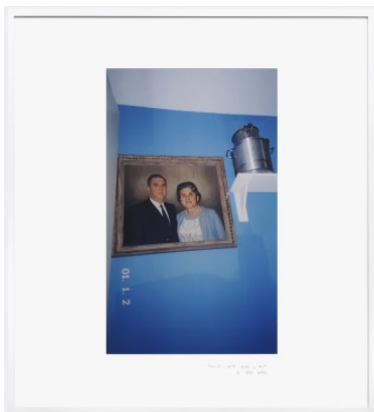
Lost sailor is lost I, 2022
C-Type Analogue Handprint
50 x 37.5 cm



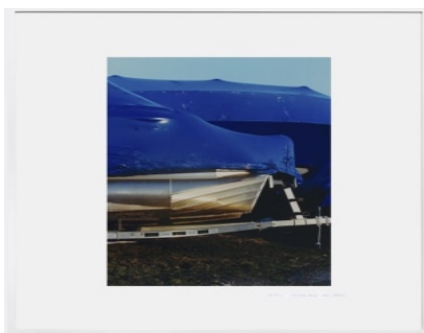
Lost sailor is lost II, 2022
C-Type Analogue Handprint
50 x 37.5 cm



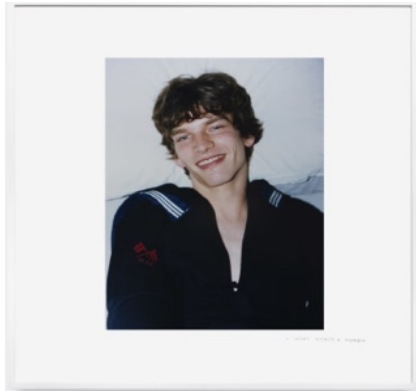
Grey house with blue sky, 2022
C-Type Analogue Handprint
50 x 37.5 cm



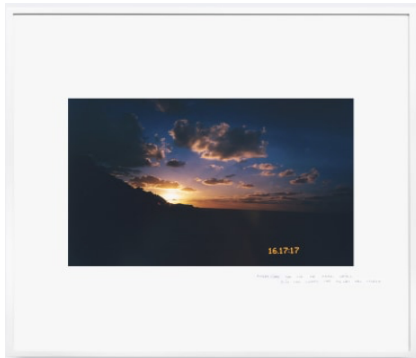
Family with blue & pot in NYC's wall, 2022
C-Type Analogue Handprint
50 x 37.5 cm



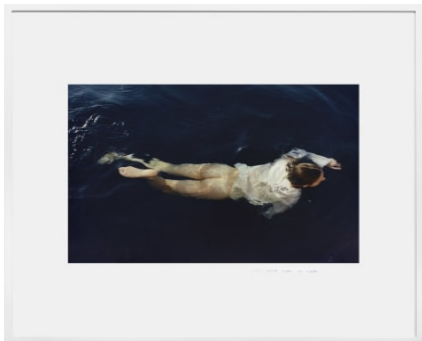
Boats and venture disappearing into blues,
2022
C-Type Analogue Handprint
50 x 37.5 cm



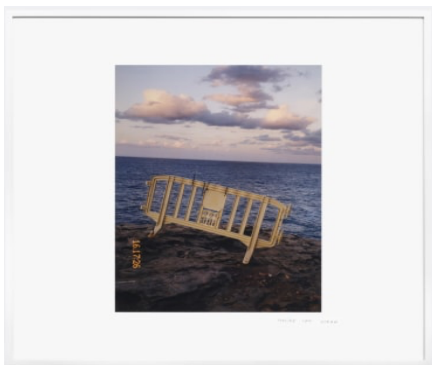
A sailor's ecstasy & euphoria, 2022
C-Type Analogue Handprint
50 x 37.5 cm



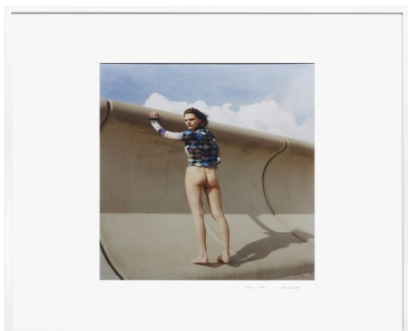
Every time you lie an angel cries & in the
clouds the tears are stored, 2022
C-Type Analogue Handprint
37.5 x 50 cm



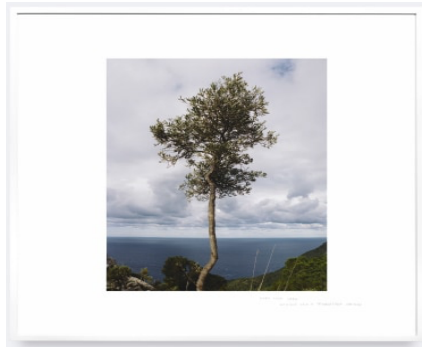
Lost sailor learns to swim, 2022
C-Type Analogue Handprint
37.5 x 50 cm



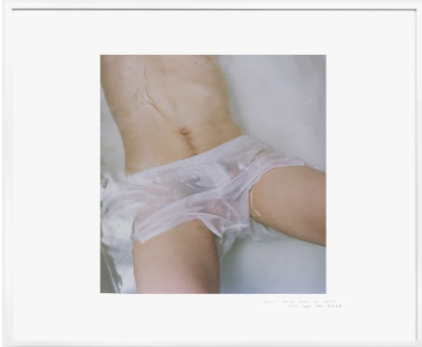
Fencing the ocean, 2022
C-Type Analogue Handprint
50 x 37.5 cm



Lena has a thought, 2022
C-Type Analogue Handprint
50 x 37.5 cm



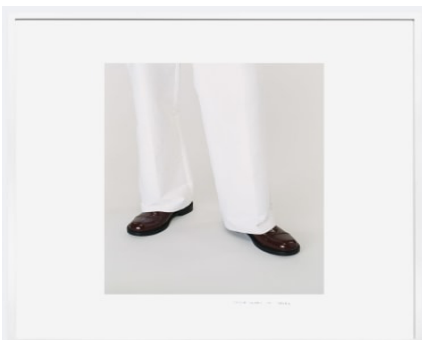
Young olive tree against sea & Tramuntana
greens, 2022
C-Type Analogue Handprint
50 x 37.5 cm



That which won't turn into dust will be water,
2022
C-Type Analogue Handprint
50 x 37.5 cm



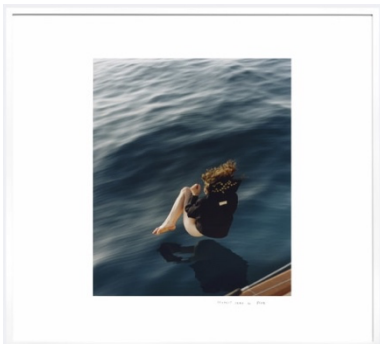
Maud is not
2022
C-Type Analogue Handprint
50 x 37.5 cm



Sailor shines in shoes, 2022
C-Type Analogue Handprint
50 x 37.5 cm



Confutatis maledictis flammis acribus addictis
voca me cum benedictis, 2022
C-Type Analogue Handprint
37.5 x 50 cm



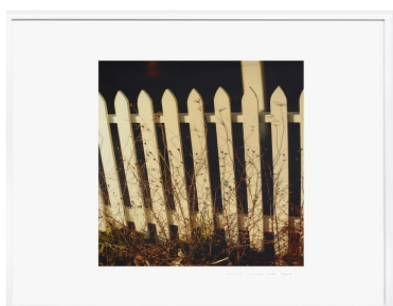
Deepest jump to blue, 2022
C-Type Analogue Handprint
50 x 37.5 cm



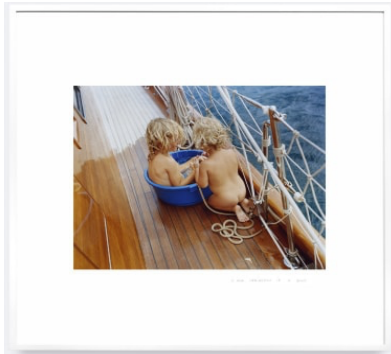
Lena in Casa de Caracol, 2022
C-Type Analogue Handprint
50 x 37.5 cm



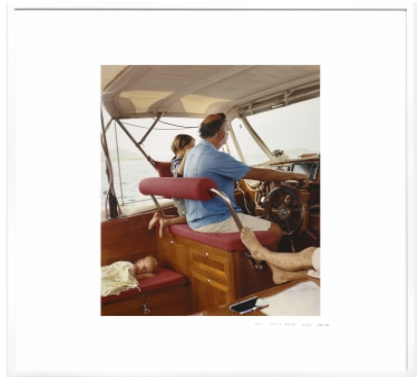
A new kind of freedom, 2022
C-Type Analogue Handprint
37.5 x 50 cm



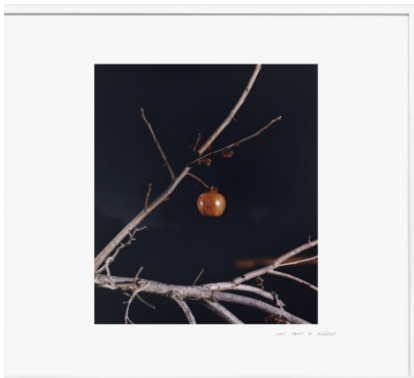
Shadows falling over fence, 2022
C-Type Analogue Handprint
50 x 37.5 cm



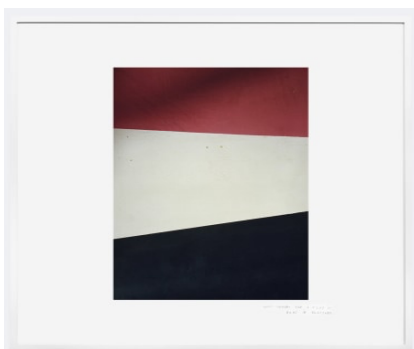
A blue swimming pool in a boat, 2022
C-Type Analogue Handprint
37.5 x 50 cm



The safest route with dream, 2022
C-Type Print
50 x 37.5 cm



Last fruit at midnight, 2022
C-Type Analogue Handprint
50 x 37.5 cm



Three colours for a flag in an old boat in the
boatyard, 2022
C-Type Analogue Handprint
50 x 37.5 cm



Commander in red, 2022
C-Type Analogue Handprint
50 x 37.5 cm