

**CORVI-MORA**

**Che Lovelace**

*Day Always Comes*

27 April - 4 June 2023

**CORVI-MORA**



1a Kempsford Road, London, SE11 4NU  
T: 020 7840 9111 F: 020 7840 9112

**CORVI-MORA**



**1a Kempsford Road, London, SE11 4NU  
T: 020 7840 9111 F: 020 7840 9112**

**CORVI-MORA**



# CORVI-MORA

## **Che Lovelace**

### *Day Always Comes*

27.04.23 – 04.06.23

Opening: Thursday 27.04.2023 – 6:30 PM to 8:30 PM.

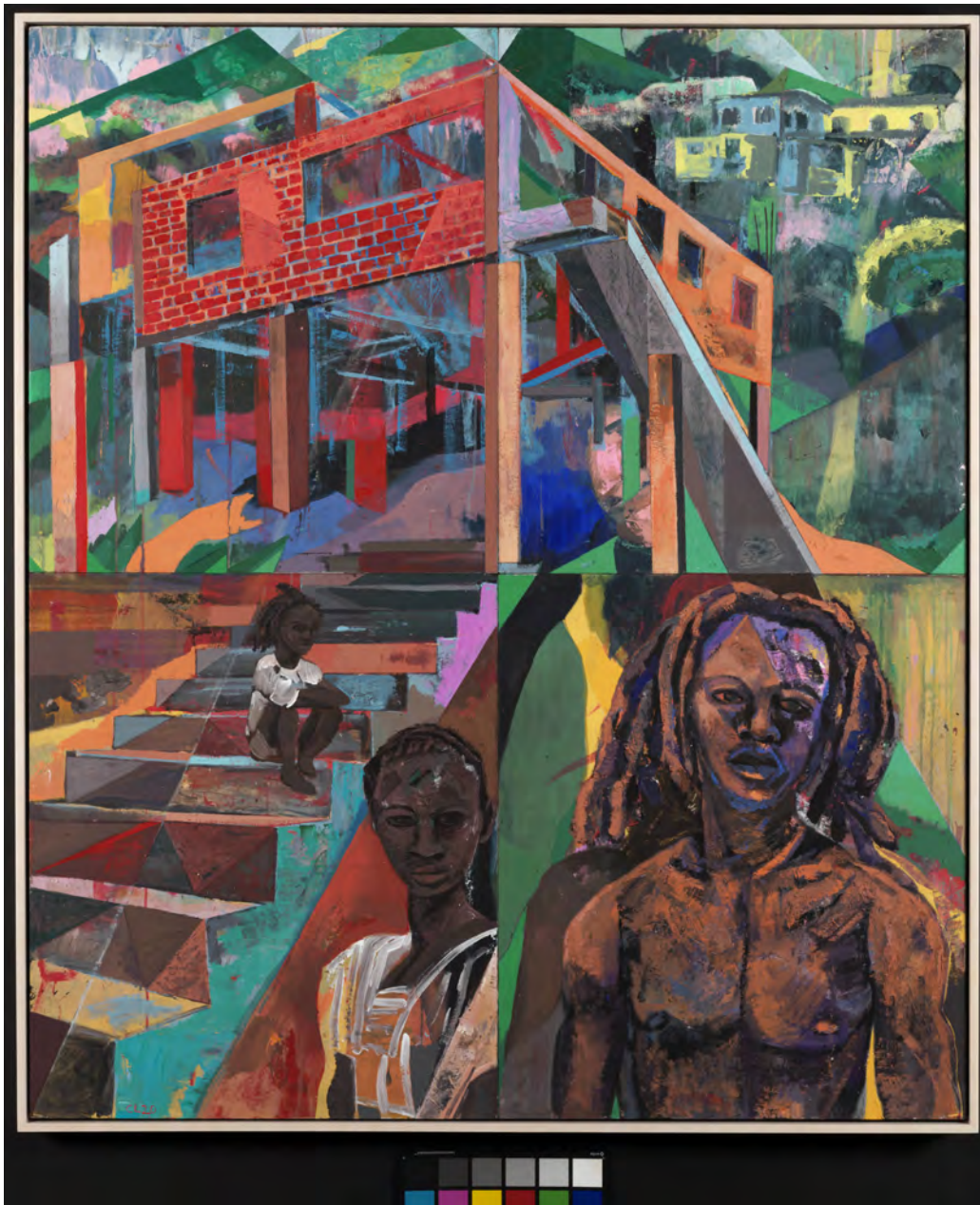
Tommaso Corvi-Mora is pleased to present an exhibition of new paintings by Che Lovelace, his first at the gallery. Che Lovelace's paintings weave stories of life, freedom, and post-colonialism in his native Trinidad into a tapestry of abstracted landscapes, still lives and portraits. As he has said: "One of the things that artists can do is that we can... save something from becoming cliché."

While initially reluctant to totally engage with local iconography and subject matter, he eventually completely embraced the landscape, the people, the colours. His depictions of the rhythms of Trinidadian life have been informed by his rootedness there, first growing up in the rural countryside village of Matura, then working within an artist cooperative building in an industrial part of town, before again returning to the outskirts of Port of Spain. Lovelace likens his material and formal interventions – such as cleaving the canvas into quadrants and dissecting the picture plane – to exploring Caribbean selfhood as an integration of antecedents, as the result of the interaction between different cultures creating a completely new one. Lovelace's fascination with Caribbean iconography is a metaphorical expedition through postcolonialism, resistance, freedom, mythology and nature. The result is a complex and nuanced expression of his own sense of identity, deeply rooted in the "genius loci".

Che Lovelace received his training at l'Ecole Régionale des Beaux-Arts de la Martinique. Solo exhibitions of his work include "Bathers", Nicola Vassell, New York City (2023); "Presented as Natural", Various Small Fires, Seoul (2022); "From the Edge of the Rock", Various Small Fires, Los Angeles (2021); "New Paintings", LOFTT Gallery, Port of Spain (2018). Group exhibitions of his work include "Uncanny Interiors", Nicola Vassell Gallery, New York (2022); "Still Life: An Ongoing Story", Galerie Sébastien Bertrand, Geneva (2019); "Get Up, Stand Up Now", Somerset House, London (2019). His work is in the public collections of the Museum of Contemporary Art Los Angeles, the Institute of Contemporary Art Miami, X Museum, Beijing, CH, and the Aishti Foundation, Lebanon. Lovelace lectures at the University of the West Indies Creative Arts Campus.

The gallery is open Tuesday to Saturday, 11 am to 6 pm.

For further information or photographic documentation please call 020 7840 9111 or email [tcm@corvi-mora.com](mailto:tcm@corvi-mora.com)



**Che Lovelace**

*The Red House*

2021

Acrylic and dry pigment on board panels

152.4 x 127 cm, 60 x 50 inches

CL21-01



**The Lovelace**

*Double Climber*

2014-2022

Acrylic and dry pigment on board panels

152.4 x 127 cm, 60 x 50 inches

CL22-01

CORVI-MORA



**Che Lovelace**

*Street Dance*

2016-2022

Acrylic and dry pigment on board panels

127 x 147.3 cm, 50 x 58 inches

CL22-02

1a Kempsford Road, London, SE11 4NU  
T: 020 7840 9111 F: 020 7840 9112





**Che Lovelace**

*The Wild Garden*

2016-2022

Acrylic and dry pigment on board panels

152.4 x 127 cm, 60 x 50 inches

CL22-03



**Che Lovelace**

*Among the Trees*

2022

Acrylic and dry pigment on board panels

147.3 x 127 cm, 58 x 50 inches

CL22-04



**Che Lovelace**

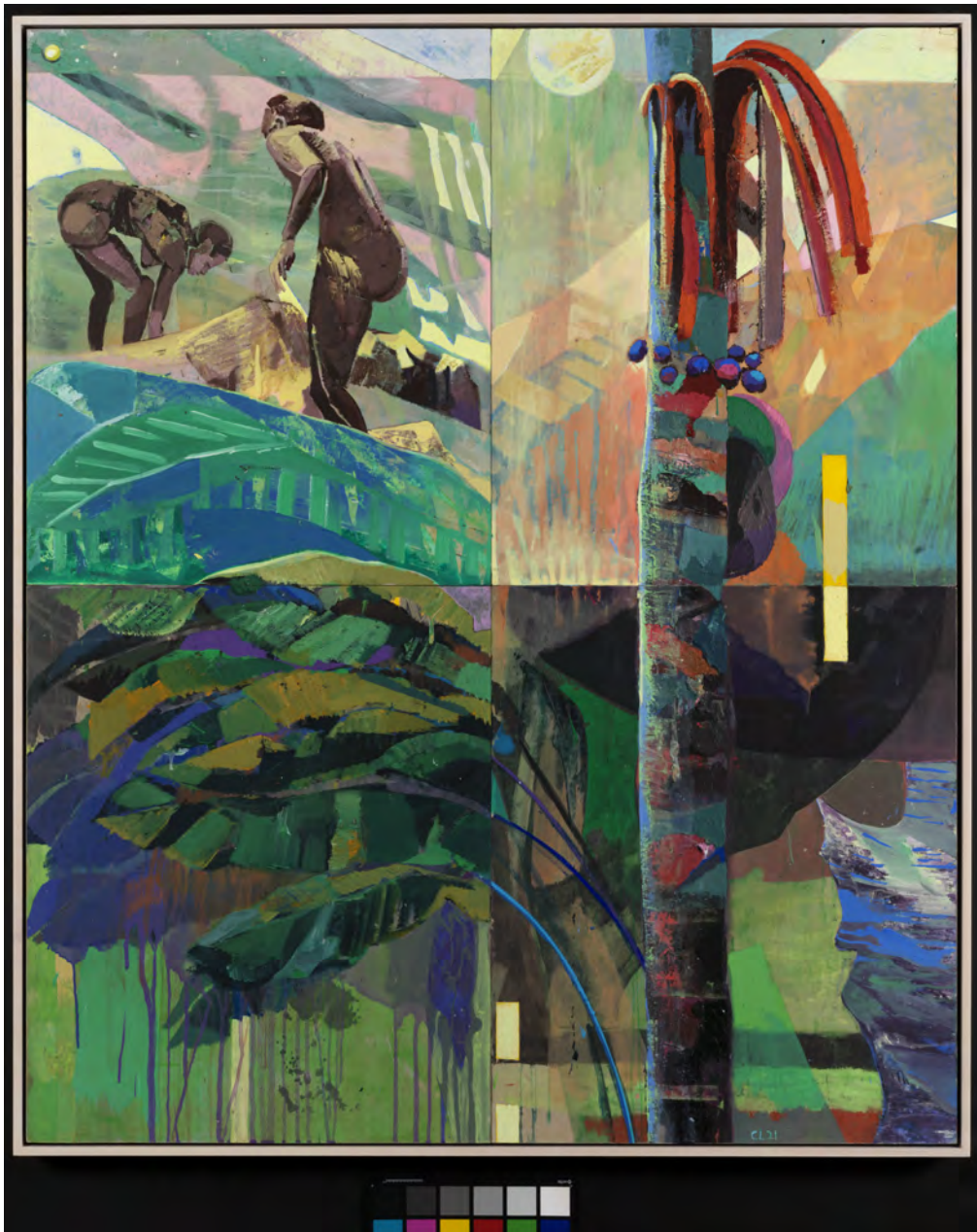
*Large Moonlight Woman*

2022

Acrylic and dry pigment on board panels

152.4 x 127 cm, 60 x 50 inches

CL22-05



**Che Lovelace**

*Moonlight Searchers*

2022

Acrylic and dry pigment on board panels

152.4 x 127 cm, 60 x 50 inches

CL22-06



**Che Lovelace**

*Practicing Drummer*

2022

Acrylic and dry pigment on board panels

147.3 x 127 cm, 58 x 50 inches

CL22-07



**Che Lovelace**

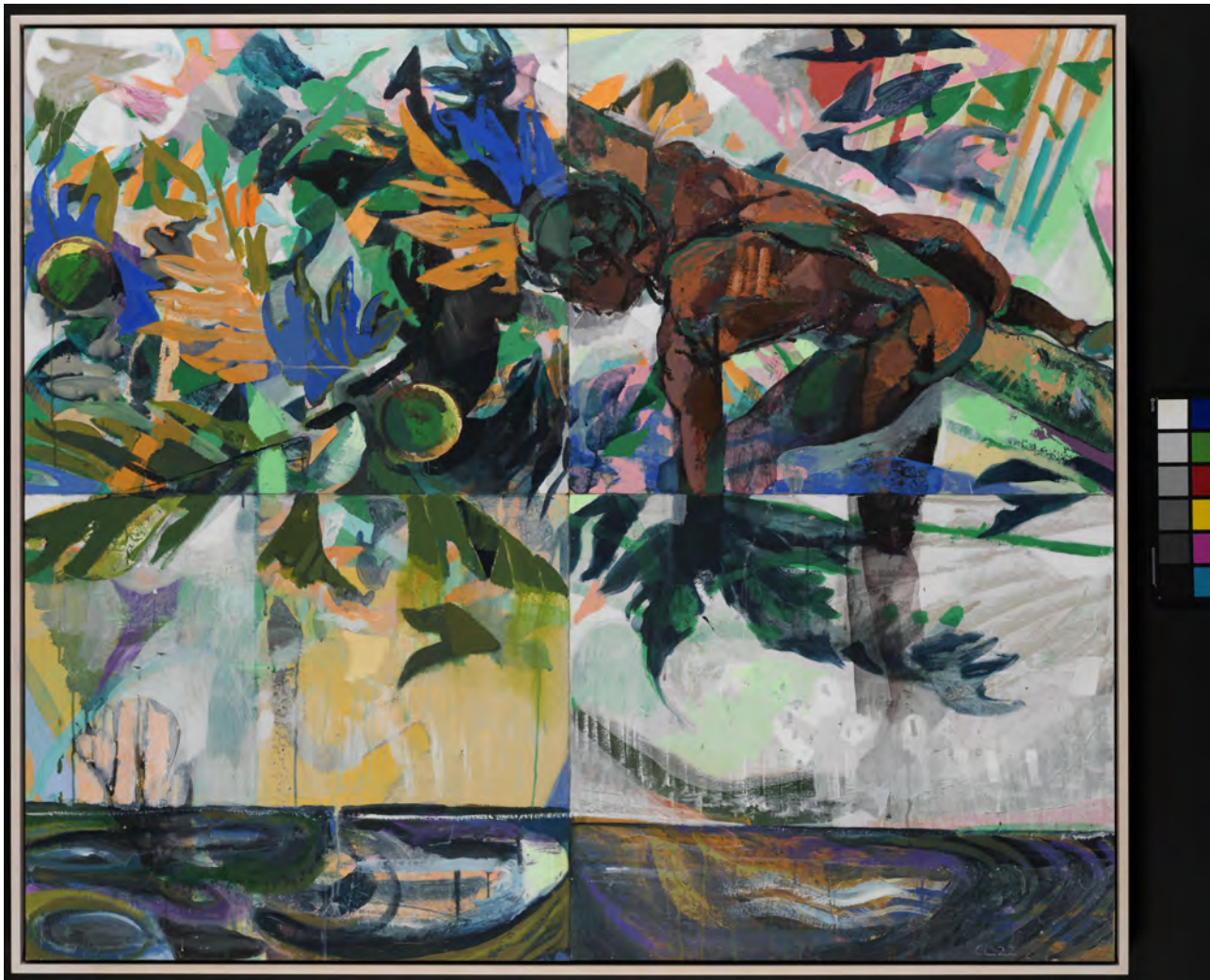
*The Breath*

2022

Acrylic and dry pigment on board panels

127 x 147.3 cm, 50 x 58 inches

CL22-08



**Che Lovelace**

*The Climber*

2022

Acrylic and dry pigment on board panels

127 x 147.3 cm, 50 x 58 inches

CL22-09